

- Legend:**
- · — · Existing Core Paths
 - · — · Existing National Cycle Networks
 - · — · DAV The Dava Way
 - · — · MOC Moray Coast Trail
 - · — · SPV Speyside Way
 - · — · ISL The Isla Way
 - · — · FWP The Fish Wives Path
 - · — · Existing Local Routes

File: P:\Data3\B1557621 - A96 PES\A96 CAD\1100 - A96 Kerbs, Footways and Paved Areas\1101 - Existing NMU Provision\B1557621-1101-023 Rev 0.dwg Date: Mar 06, 2015 - 2:03pm Plotted by: atkins

For continuation see drawing number B1557621/1101/022

For continuation see drawing number B1557621/1101/024

0	04/03/15	Issued for information.	SA	SC	DB	EHB
Rev	Rev. Date	Purpose of revision	Drawn	Checked	Reviewed	Approved

JACOBS
 55 Bothwell St, Glasgow, G2 7HX
 Tel:+44(0)141 243 8200 Fax:+44(0)141 226 3109
 www.jacobs.com

Client



TRANSPORT SCOTLAND
 COMHDHAL ALBA

Project



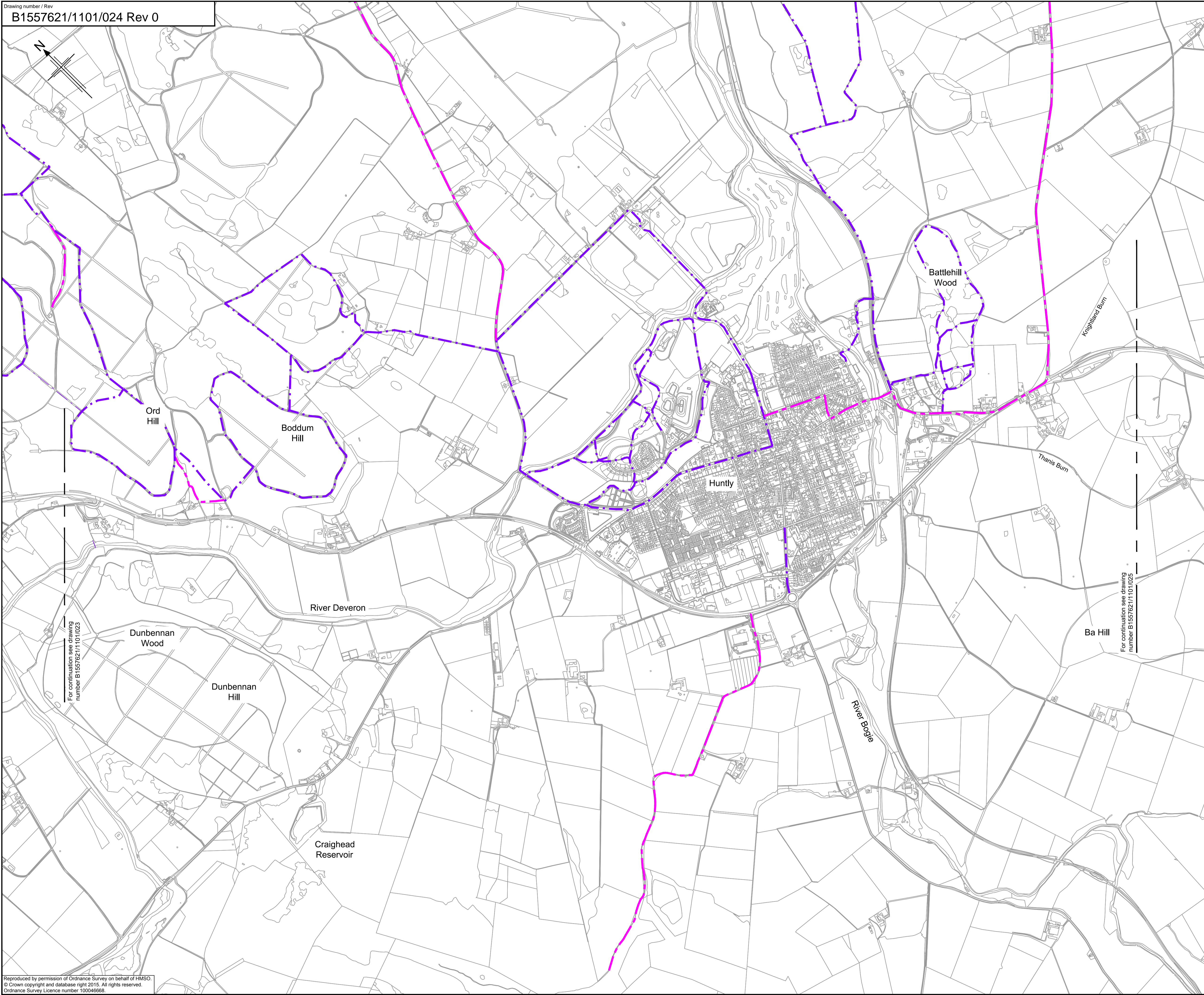
ASS DUALLING
 INVERNESS TO ABERDEEN

Drawing title
EXISTING NMU PROVISION SHEET 23 OF 37

Drawing status		FOR INFORMATION
Scale	1:10,000 @ A1	DO NOT SCALE
Jacobs No.	B1557621	
Drawing number	B1557621/1101/023	Rev
		0

Reproduced by permission of Ordnance Survey on behalf of HMSO.
 © Crown copyright and database right 2015. All rights reserved.
 Ordnance Survey Licence number 100046668.

This drawing is not to be used in whole or part other than for the intended purpose and project as defined on this drawing. Refer to the contract for full terms and conditions.



- Legend:
- - - Existing Core Paths
 - Existing National Cycle Networks
 - DAV The Dava Way
 - MOC Moray Coast Trail
 - SPV Speyside Way
 - ISL The Isla Way
 - FWP The Fish Wives Path
 - - - Existing Local Routes

File: P:\Data3\B1557621 - A96 PESVA96 CAD\1100 - A96 Kerbs, Footways and Paved Areas\1101 - Existing NMU Provision\B1557621-1101-024 Rev 0.dwg Date: Mar 08, 2015 - 2:03pm Plotted by: atikens

For continuation see drawing number B1557621/1101/023

For continuation see drawing number B1557621/1101/025

Rev	Rev. Date	Purpose of revision	SA	SC	DB	EHB
0	04/03/15	Issued for information.				

JACOBS
 85 Bothwell St, Glasgow, G2 7HX
 Tel:+44(0)141 243 8200 Fax:+44(0)141 226 3109
 www.jacobs.com

Client



TRANSPORT SCOTLAND
 COMHDHAL ALBA

Project



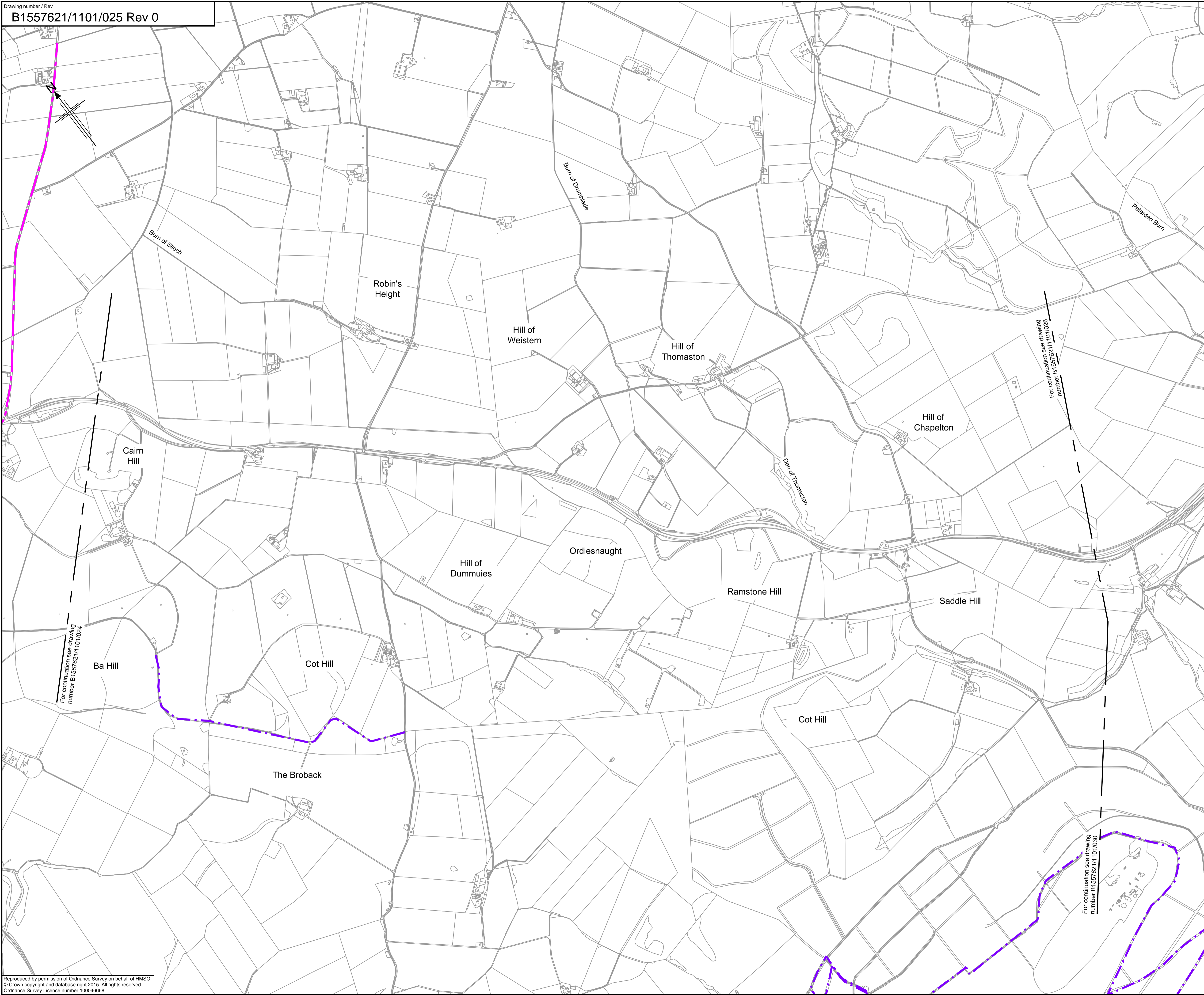
ASS DUALLING
 INVERNESS TO ABERDEEN

Drawing title

**EXISTING NMU PROVISION
 SHEET 24 OF 37**

Drawing status		FOR INFORMATION	
Scale	1:10,000 @ A1	DO NOT SCALE	
Jacobs No.	B1557621		
Drawing number	B1557621/1101/024	Rev	0

This drawing is not to be used in whole or part other than for the intended purpose and project as defined on this drawing. Refer to the contract for full terms and conditions.



File: P:\Data3\B1557621 - A96 PES\A96 CAD\1100 - A96 Kerbs, Footways and Paved Areas\1101 - Existing NMU Provision\B1557621-1101-025 Rev 0.dwg Date: Mar 06, 2015 - 2:03pm Plotted by: atkens

Reproduced by permission of Ordnance Survey on behalf of HMSO.
 © Crown copyright and database right 2015. All rights reserved.
 Ordnance Survey Licence number 100046668.

For continuation see drawing number B1557621/1101/024

For continuation see drawing number B1557621/1101/026

For continuation see drawing number B1557621/1101/030

- Legend:**
- - - Existing Core Paths
 - Existing National Cycle Networks
 - - - The Dava Way
 - - - Moray Coast Trail
 - - - Speyside Way
 - - - The Isla Way
 - - - The Fish Wives Path
 - - - Existing Local Routes

0	04/03/15	Issued for information.	SA	SC	DB	EHB
Rev	Rev. Date	Purpose of revision	Drawn	Checked	Reviewed	Approved

JACOBS
 55 Bothwell St, Glasgow, G2 7HX
 Tel:+44(0)141 243 8000 Fax:+44(0)141 226 3109
 www.jacobs.com

Client



TRANSPORT SCOTLAND
 COMHDHAIL ALBA

Project



ASS DUALLING
 INVERNESS TO ABERDEEN

Drawing title

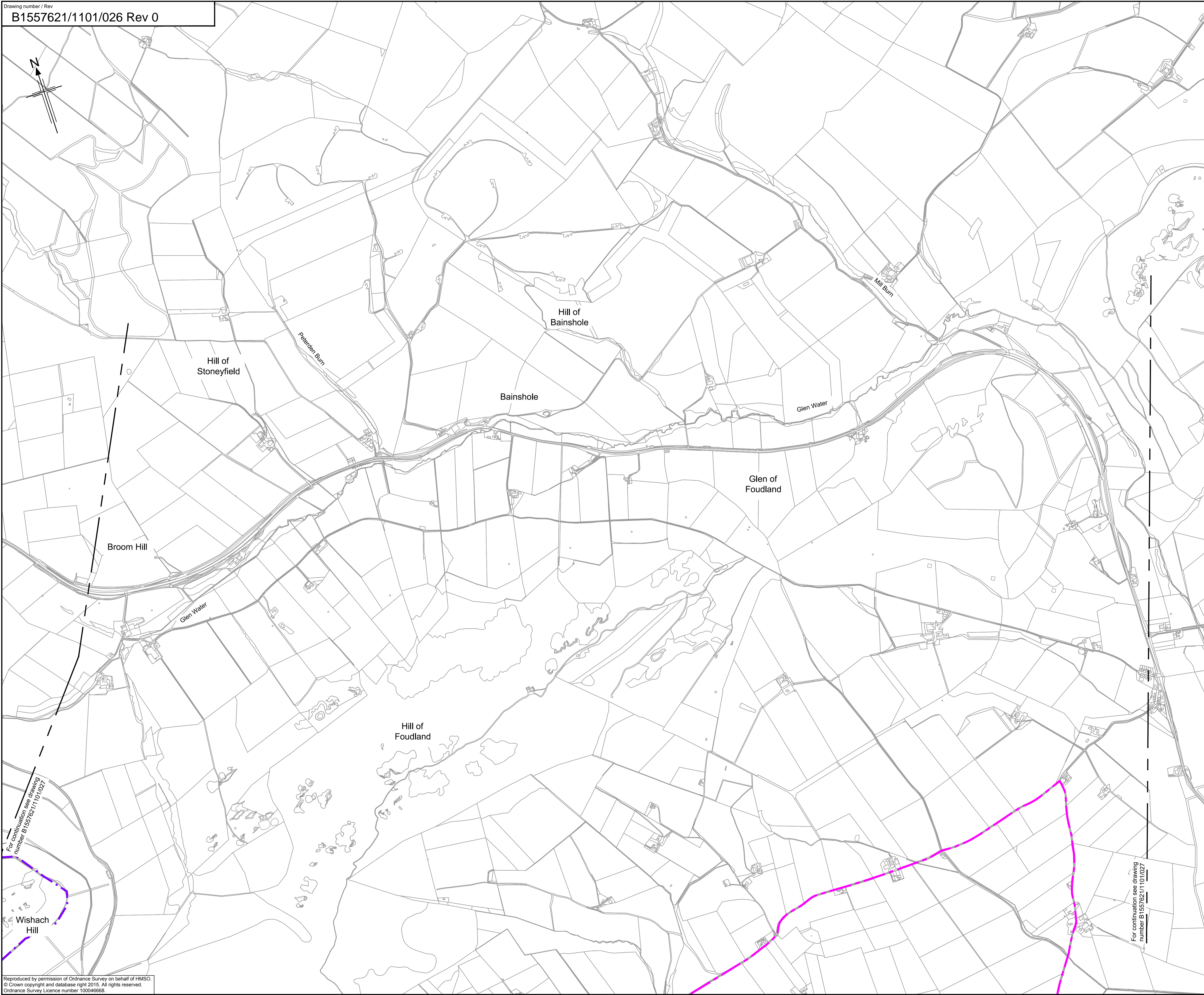
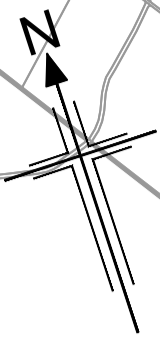
**EXISTING NMU PROVISION
 SHEET 25 OF 37**

Drawing status

FOR INFORMATION

Scale	1:10,000 @ A1	DO NOT SCALE
Jacobs No.	B1557621	
Drawing number	B1557621/1101/025	Rev
		0

This drawing is not to be used in whole or part other than for the intended purpose and project as defined on this drawing. Refer to the contract for full terms and conditions.



- Legend:**
- Existing Core Paths
 - Existing National Cycle Networks
 - DAV The Dava Way
 - MCK Moray Coast Trail
 - SPV Speyside Way
 - ISL The Isla Way
 - FWP The Fish Wives Path
 - Existing Local Routes

File: P:\Data3\B1557621 - A96 PES\A96 CAD\1100 - A96 Kerbs, Footways and Paved Areas\1101 - Existing NMU Provision\B1557621-1101-026 Rev 0.dwg Date: Mar 06, 2015 - 2:03pm Plotted by: atkins

For continuation see drawing number B1557621/1101/027

For continuation see drawing number B1557621/1101/027

Reproduced by permission of Ordnance Survey on behalf of HMSO. © Crown copyright and database right 2015. All rights reserved. Ordnance Survey Licence number 100046668.

0	04/03/15	Issued for information.	SA	SC	DB	EHB
Rev	Rev. Date	Purpose of revision	Drawn	Checked	Reviewed	Approved

JACOBS
 55 Bothwell St, Glasgow, G2 7HX
 Tel:+44(0)141 243 8000 Fax:+44(0)141 226 3109
 www.jacobs.com

Client

Project

Drawing title

**EXISTING NMU PROVISION
 SHEET 26 OF 37**

Drawing status

FOR INFORMATION

Scale	1:10,000 @ A1	DO NOT SCALE
Jacobs No.	B1557621	
Drawing number	B1557621/1101/026	Rev
		0

This drawing is not to be used in whole or part other than for the intended purpose and project as defined on this drawing. Refer to the contract for full terms and conditions.