

- Legend:**
- Existing Core Paths
 - Existing National Cycle Networks
 - DAV The Dava Way
 - MOC Moray Coast Trail
 - SPV Speyside Way
 - ISL The Isla Way
 - FWP The Fish Wives Path
 - Existing Local Routes

File: P:\Data3\B1557621 - A96 PES\A96 CAD\1100 - A96 Kerbs, Footways and Paved Areas\1101 - Existing NMU Provision\B1557621-1101-027 Rev 0.dwg Date: Mar 06, 2015 - 2:03pm Plotted by: atkens

0	04/03/15	Issued for information.	SA	SC	DB	EHB
Rev	Rev. Date	Purpose of revision	Drawn	Checked	Reviewed	Approved

JACOBS
 85 Botwell St, Glasgow, G2 7HX
 Tel:+44(0)141 243 8000 Fax:+44(0)141 226 3109
 www.jacobs.com

Client



TRANSPORT SCOTLAND
 COMHDHAIL ALBA

Project



ASS DUALLING
 INVERNESS TO ABERDEEN

Drawing title

**EXISTING NMU PROVISION
 SHEET 27 OF 37**

Drawing status

FOR INFORMATION

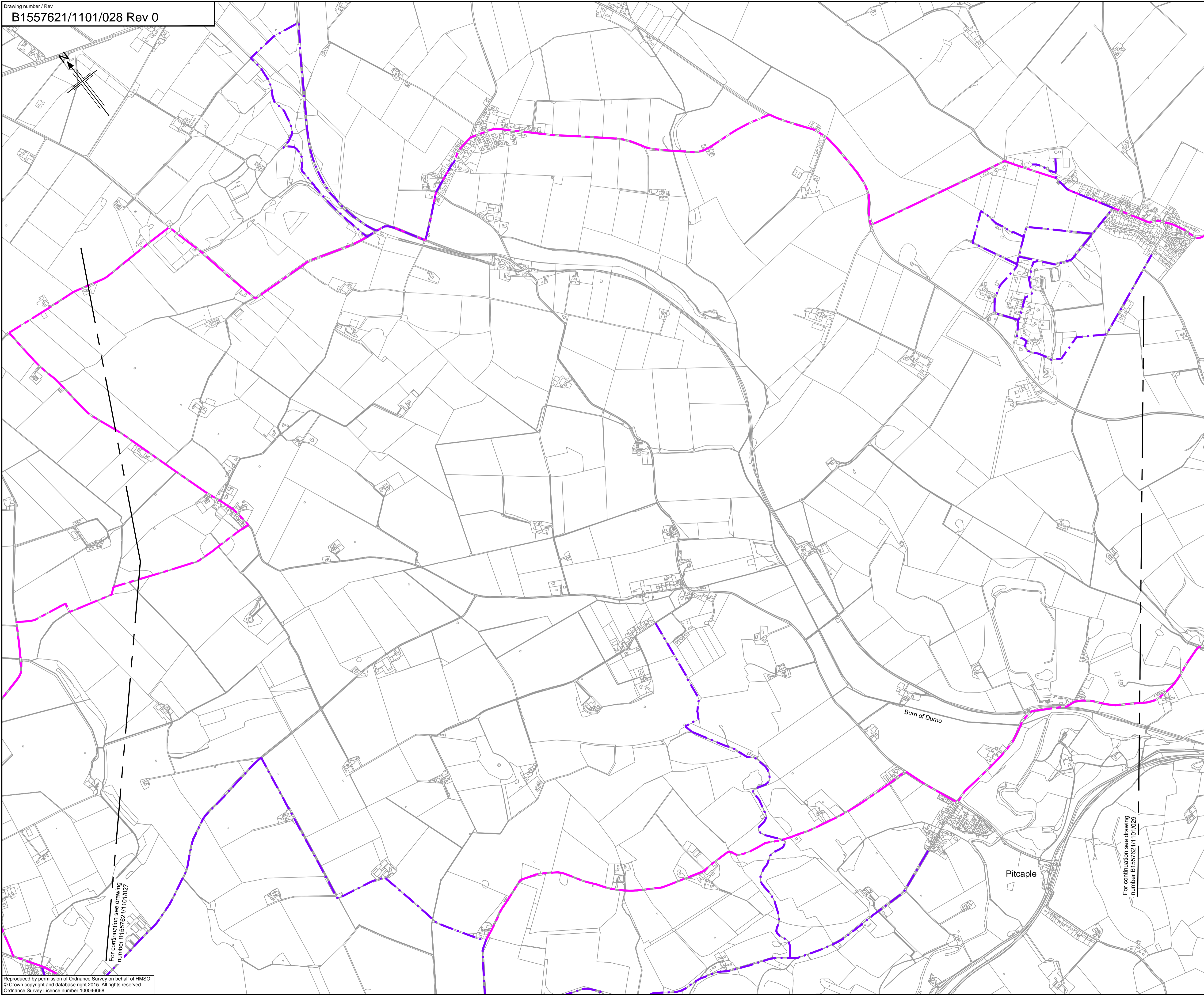
Scale 1:10,000 @ A1 **DO NOT SCALE**

Jacobs No. B1557621

Drawing number **B1557621/1101/027** Rev **0**

Reproduced by permission of Ordnance Survey on behalf of HMSO.
 © Crown copyright and database right 2015. All rights reserved.
 Ordnance Survey Licence number 100046668.

This drawing is not to be used in whole or part other than for the intended purpose and project as defined on this drawing. Refer to the contract for full terms and conditions.



- Legend:**
- - - Existing Core Paths
 - Existing National Cycle Networks
 - - - The Dava Way
 - - - Moray Coast Trail
 - - - Speyside Way
 - - - The Isla Way
 - - - The Fish Wives Path
 - - - Existing Local Routes

File: P:\Data3\B1557621 - A96 PES\A96 CAD\1100 - A96 Kerbs, Footways and Paved Areas\1101 - Existing NMU Provision\B1557621-1101-028 Rev 0.dwg Date: Mar 06, 2015 - 2:04pm Plotted by: aitkens

For continuation see drawing number B1557621/1101/027

For continuation see drawing number B1557621/1101/029

0	04/03/15	Issued for information.	SA	SC	DB	EHB
Rev	Rev. Date	Purpose of revision	Drawn	Checked	Reviewed	Approved

JACOBS
 55 Bothwell St, Glasgow, G2 7HX
 Tel:+44(0)141 243 8000 Fax:+44(0)141 226 3109
 www.jacobs.com

Client



TRANSPORT SCOTLAND
 COMHDHAIL ALBA

Project



ASS DUALLING
 INVERNESS TO ABERDEEN

Drawing title

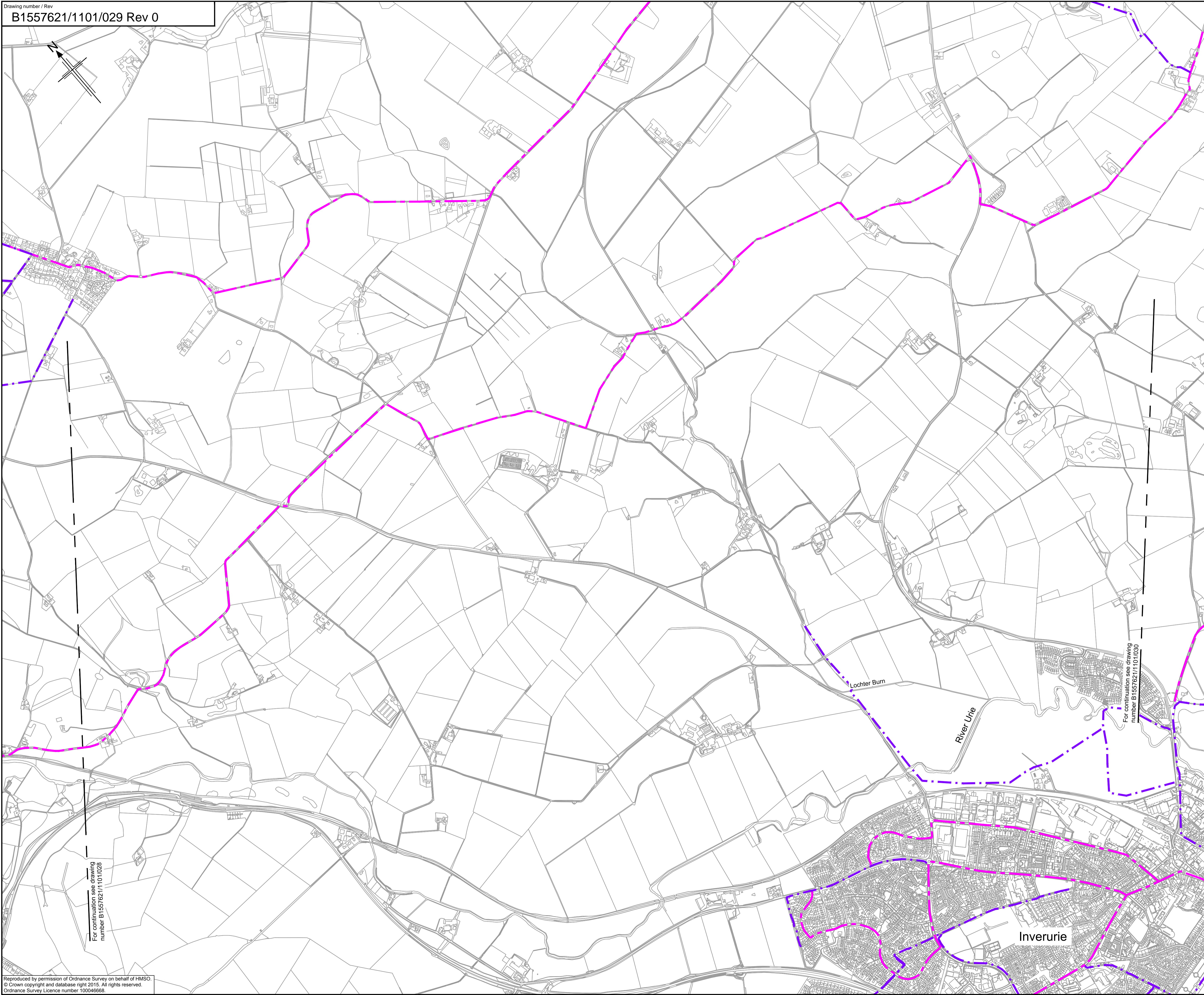
**EXISTING NMU PROVISION
 SHEET 28 OF 37**

Drawing status

FOR INFORMATION

Scale	1:10,000 @ A1	DO NOT SCALE
Jacobs No.	B1557621	
Drawing number	B1557621/1101/028	Rev
		0

This drawing is not to be used in whole or part other than for the intended purpose and project as defined on this drawing. Refer to the contract for full terms and conditions.



- Legend:**
- Existing Core Paths
 - Existing National Cycle Networks
 - The Dava Way
 - Moray Coast Trail
 - Speyside Way
 - The Isla Way
 - The Fish Wives Path
 - Existing Local Routes

File: P:\Data3\B1557621 - A96 PES\A96 CAD\1101 - Existing NMU Provision\B1557621-1101-029 Rev 0.dwg Date: Mar 06, 2015 - 2:04pm Plotted by: atikens

Rev	Rev. Date	Purpose of revision	SA	SC	DB	EHB
0	04/03/15	Issued for information.				

JACOBS
 55 Bothwell St, Glasgow, G2 7HX
 Tel:+44(0)141 243 8000 Fax:+44(0)141 226 3109
 www.jacobs.com

Client



TRANSPORT SCOTLAND
 COMHDHAIL ALBA

Project



ASS DUALLING
 INVERURIE TO ABERDEEN

Drawing title

EXISTING NMU PROVISION SHEET 29 OF 37

Drawing status

FOR INFORMATION

Scale 1:10,000 @ A1 **DO NOT SCALE**

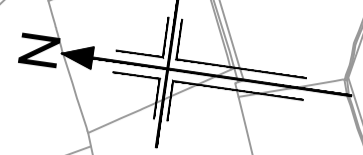
Jacobs No. B1557621

Drawing number **B1557621/1101/029** Rev **0**

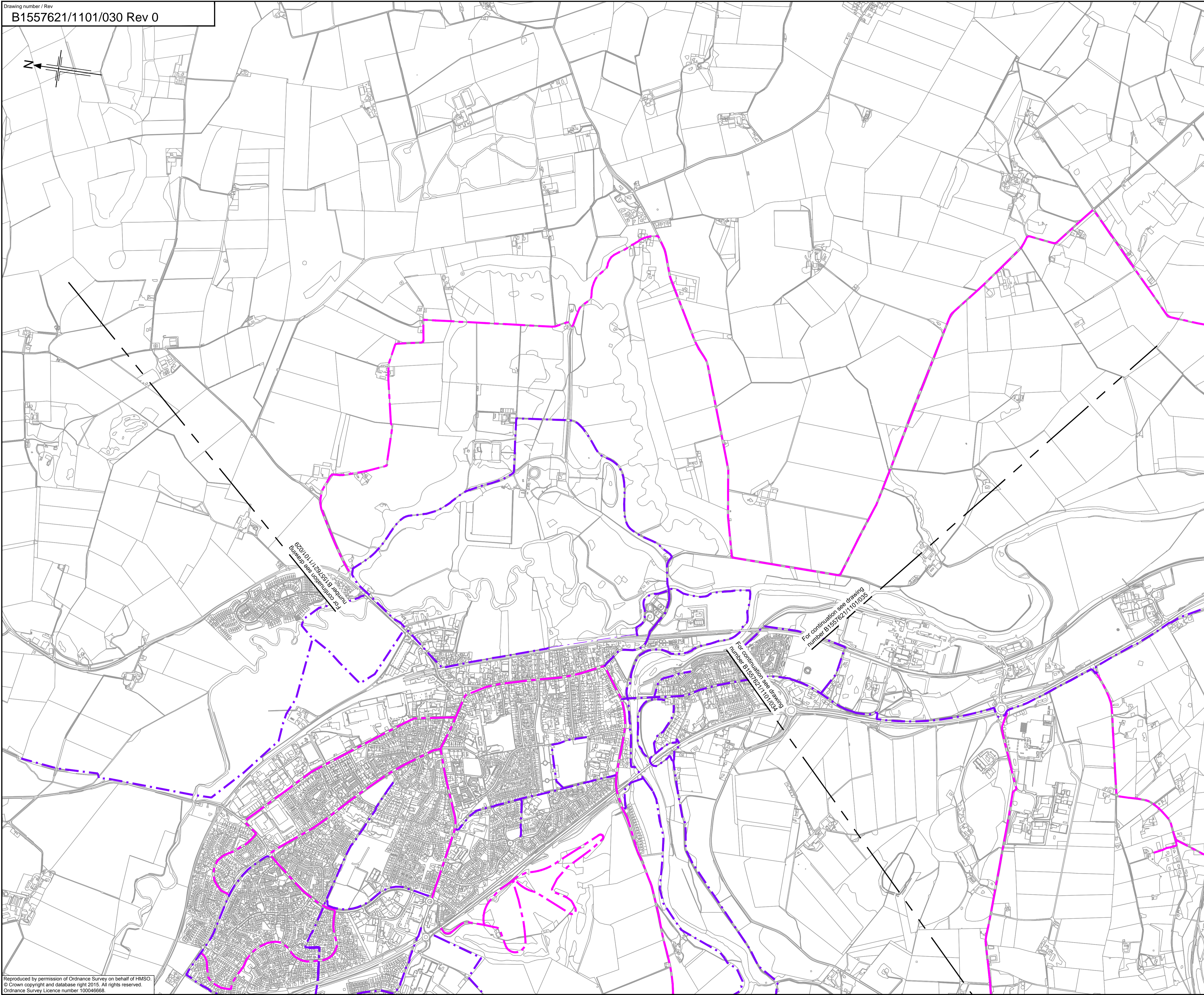
This drawing is not to be used in whole or part other than for the intended purpose and project as defined on this drawing. Refer to the contract for full terms and conditions.

For continuation see drawing number B1557621/1101/028

For continuation see drawing number B1557621/1101/030



- Legend:**
- · — · Existing Core Paths
 - Existing National Cycle Networks
 - DAV The Dava Way
 - MCK Moray Coast Trail
 - SPY Speyside Way
 - ISL The Isla Way
 - FWP The Fish Wives Path
 - · — · Existing Local Routes



File: P:\Data3\B1557621 - A96 PES\A96 CAD\1101 - A96 Kerbs, Footways and Paved Areas\1101 - Existing NMU Provision\B1557621-1101-030 Rev 0.dwg Date: Mar 06, 2015 - 2:04pm Plotted by: atkens

Reproduced by permission of Ordnance Survey on behalf of HMSO.
 © Crown copyright and database right 2015. All rights reserved.
 Ordnance Survey Licence number 100046668.

Rev	Rev. Date	Purpose of revision	SA	SC	DB	EHB
0	04/03/15	Issued for information.				

JACOBS

55 Bothwell St, Glasgow, G2 7HX
 Tel:+44(0)141 243 8200 Fax:+44(0)141 226 3109
 www.jacobs.com

Client



**TRANSPORT
SCOTLAND**
CÒMHDHAL ALBA

Project



**ASS
DUALLING**
INVERNESS TO ABERDEEN

Drawing title

**EXISTING NMU PROVISION
SHEET 30 OF 37**

Drawing status

FOR INFORMATION

Scale	1:10,000 @ A1	DO NOT SCALE
Jacobs No.	B1557621	
Drawing number	B1557621/1101/030	
Rev	0	

This drawing is not to be used in whole or part other than for the intended purpose and project as defined on this drawing. Refer to the contract for full terms and conditions.