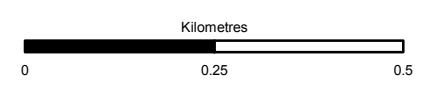


- ~ Proposed Scheme
- Increase in Noise Level**
- dB L_{A10,18Hour}**
- 5.0 and above
 - 3.0 to 5.0
 - 1.0 to 3.0
 - 0.0 to 1.0
- Decrease in Noise Level**
- dB L_{A10,18Hour}**
- 1.0 to 0.0
 - 3.0 to -1.0
 - 5.0 to -3.0
 - 5.0 and below



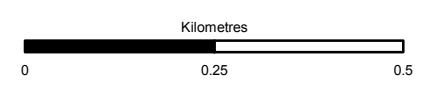
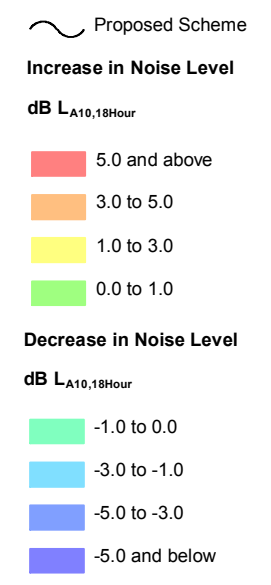
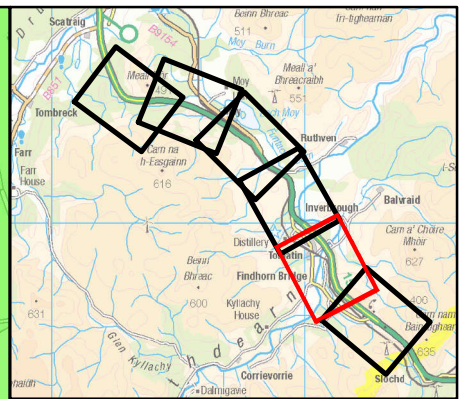
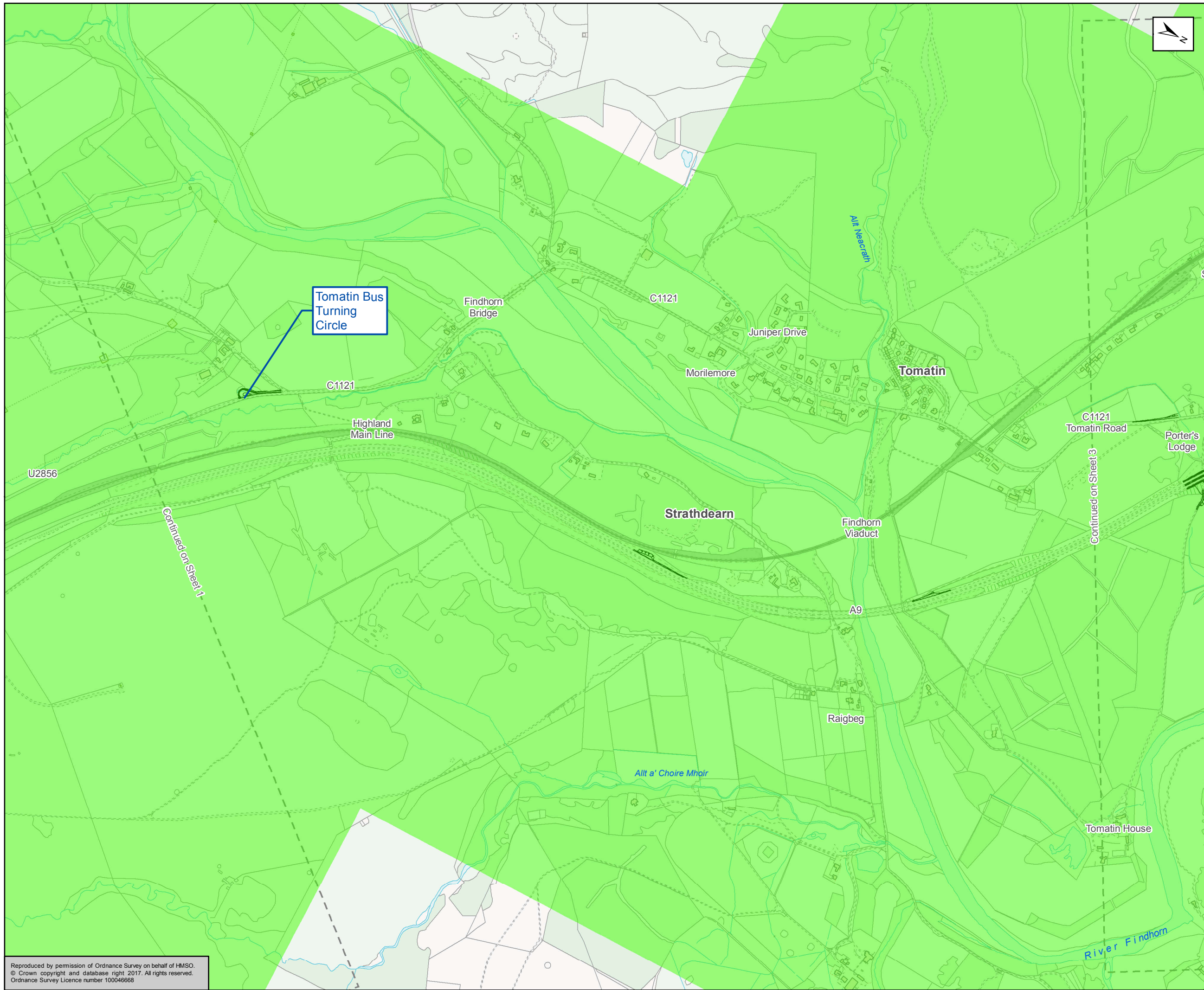
| | | | |
|--------|-------|------------|---|
| Status | FINAL | Subsidiary | B |
|--------|-------|------------|---|



Figure 17.5a
Change in Noise by Design Year
Without Scheme
Sheet 1 of 6

| | | | | | | | | | |
|-----------------|-------------------------------------|--------|--------|---------|----|----------|----|------------|-----|
| Scale | 1:10,000 | Drawn | LA | Checked | MK | Approved | RM | Authorised | SB |
| Document Number | A9P12-AMJ-ENV-Z_ZZZZZ_XX-DR-GI-0015 | | | | | | | Revision | P03 |
| Project | Originator | Volume | | | | | | | |
| Location | Type | Role | Number | | | | | | |

Reproduced by permission of Ordnance Survey on behalf of HMSO.
© Crown copyright and database right 2017. All rights reserved.
Ordnance Survey Licence number 100046668



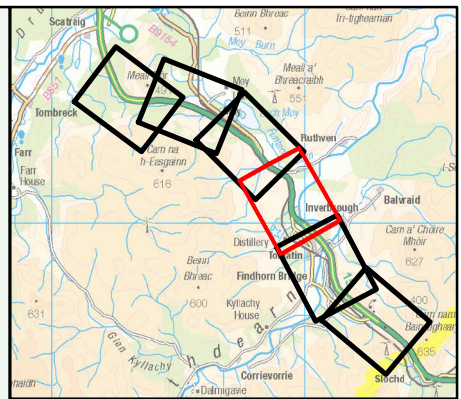
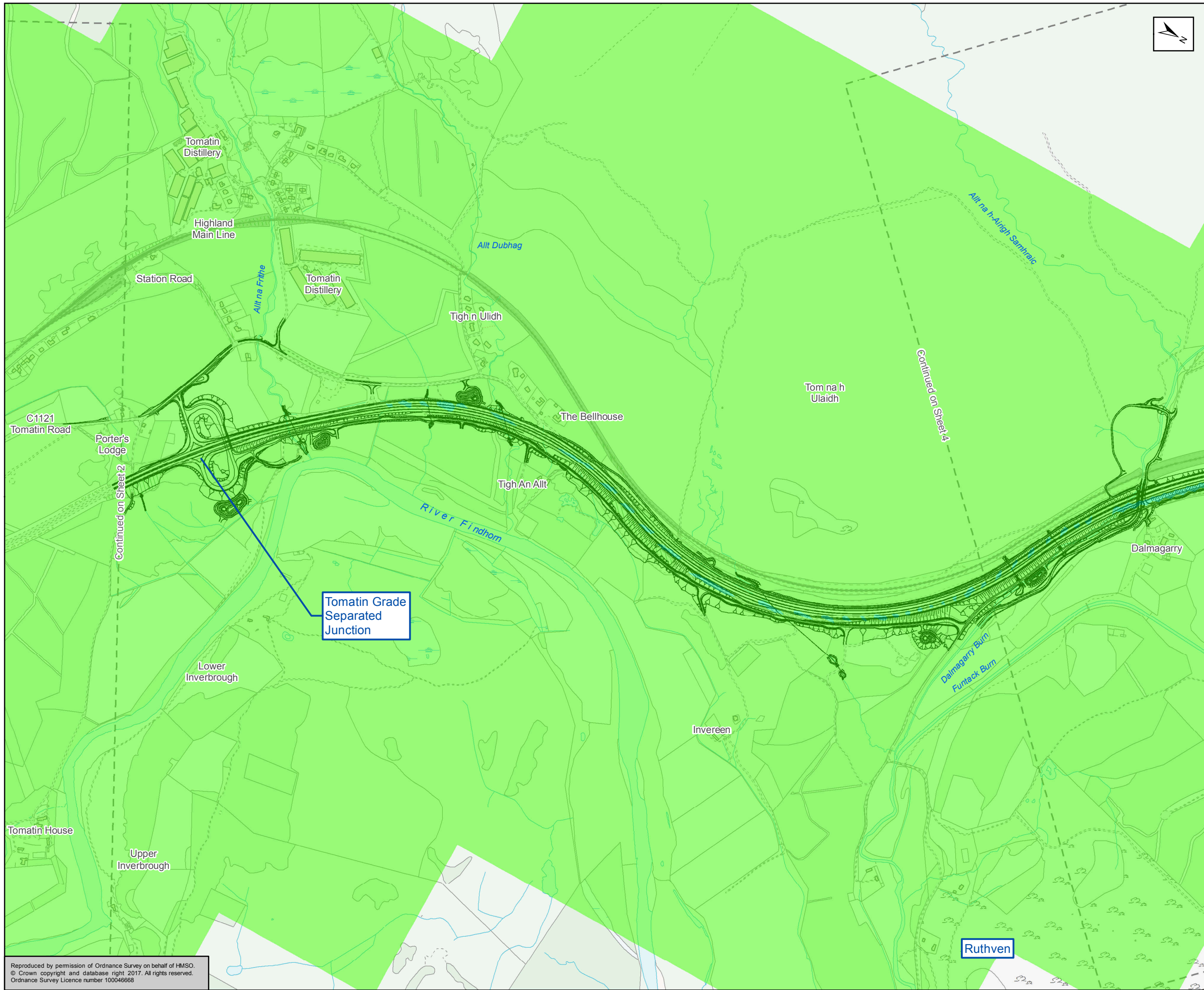
| | | | |
|--------|-------|------------|---|
| Status | FINAL | Subsidiary | B |
|--------|-------|------------|---|



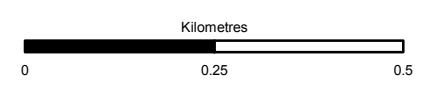
Figure 17.5b
Change in Noise by Design Year
Without Scheme
Sheet 2 of 6

| | | | | | | | | | | |
|-----------------|-------------------------------------|--------|--------|---------|----|----------|----|------------|----------|-----|
| Scale | 1:10,000 | Drawn | LA | Checked | MK | Approved | RM | Authorised | SB | |
| Document Number | A9P12-AMJ-ENV-Z_ZZZZZ_XX-DR-GI-0016 | | | | | | | | Revision | P02 |
| Project | Originator | Volume | | | | | | | | |
| Location | Type | Role | Number | | | | | | | |

Reproduced by permission of Ordnance Survey on behalf of HMSO.
© Crown copyright and database right 2017. All rights reserved.
Ordnance Survey Licence number 100046668



- ~ Proposed Scheme
- Increase in Noise Level**
dB L_{A10,18Hour}
- 5.0 and above
 - 3.0 to 5.0
 - 1.0 to 3.0
 - 0.0 to 1.0
- Decrease in Noise Level**
dB L_{A10,18Hour}
- 1.0 to 0.0
 - 3.0 to -1.0
 - 5.0 to -3.0
 - 5.0 and below



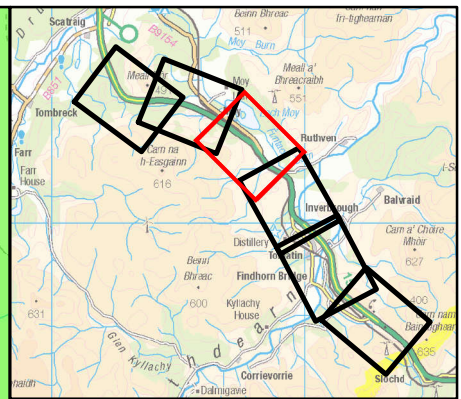
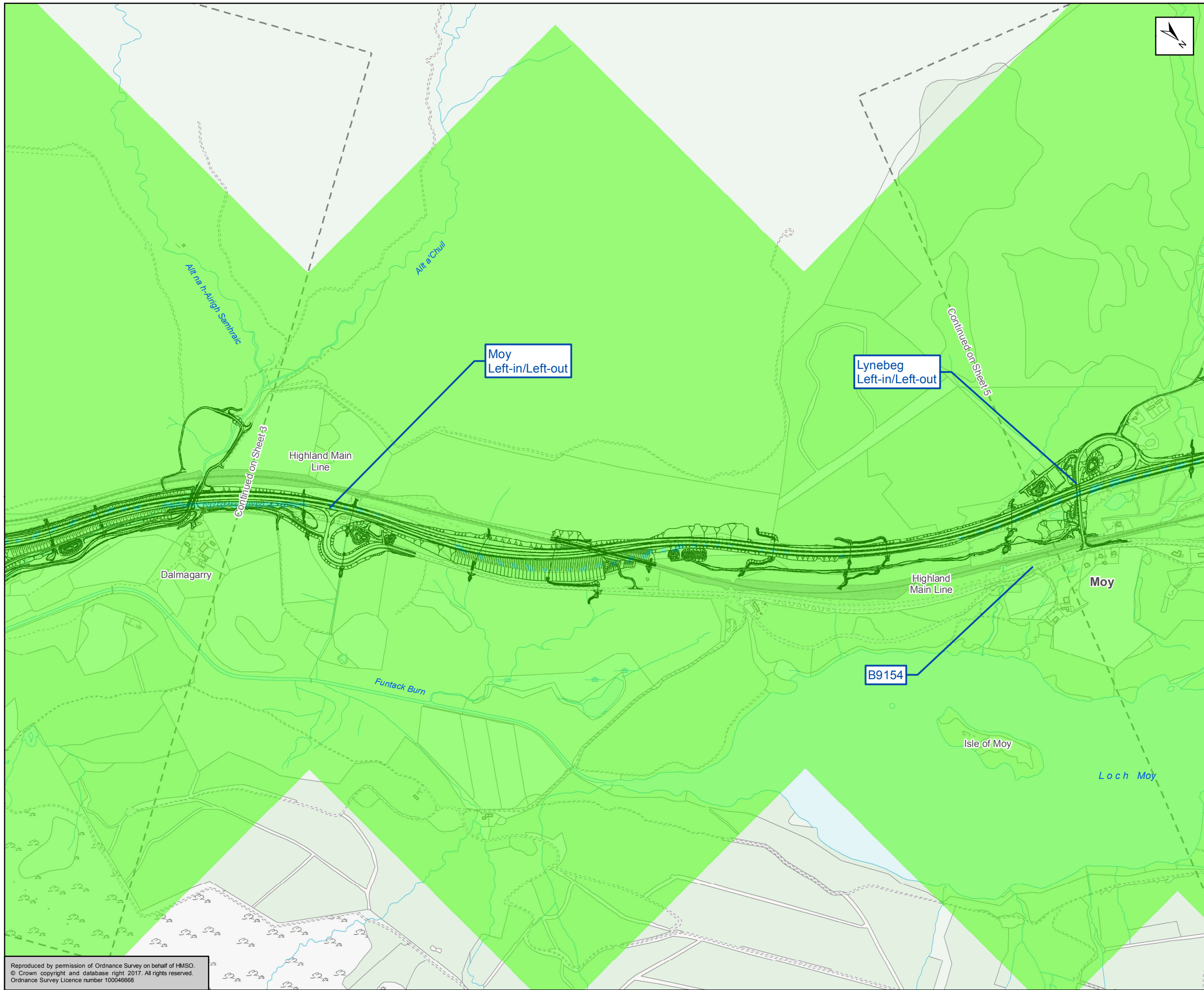
| | | | |
|--------|-------|------------|---|
| Status | FINAL | Subsidiary | B |
|--------|-------|------------|---|



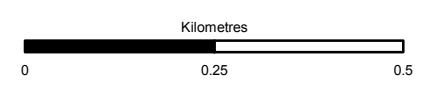
Figure 17.5c
 Change in Noise by Design Year
 Without Scheme
 Sheet 3 of 6

| | | | | | | | | | |
|-----------------|-------------------------------------|-------|--------|---------|------------|----------|-----|------------|----|
| Scale | 1:10,000 | Drawn | LA | Checked | MK | Approved | RM | Authorised | SB |
| Document Number | A9P12-AMJ-ENV-Z_ZZZZZ_XX-DR-GI-0017 | | | Project | Originator | Volume | P03 | | |
| Location | Type | Role | Number | | | | | | |

Reproduced by permission of Ordnance Survey on behalf of HMSO.
 © Crown copyright and database right 2017. All rights reserved.
 Ordnance Survey Licence number 100046668



- Proposed Scheme
- Increase in Noise Level**
- dB LA10,18Hour**
- 5.0 and above
 - 3.0 to 5.0
 - 1.0 to 3.0
 - 0.0 to 1.0
- Decrease in Noise Level**
- dB LA10,18Hour**
- 1.0 to 0.0
 - 3.0 to -1.0
 - 5.0 to -3.0
 - 5.0 and below



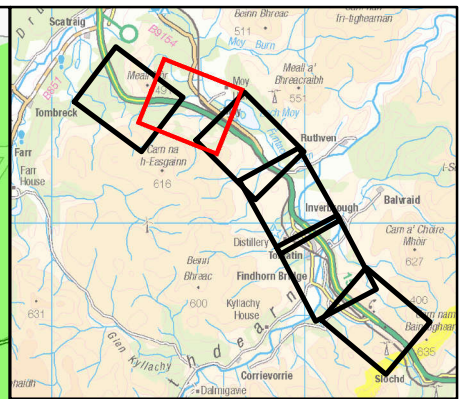
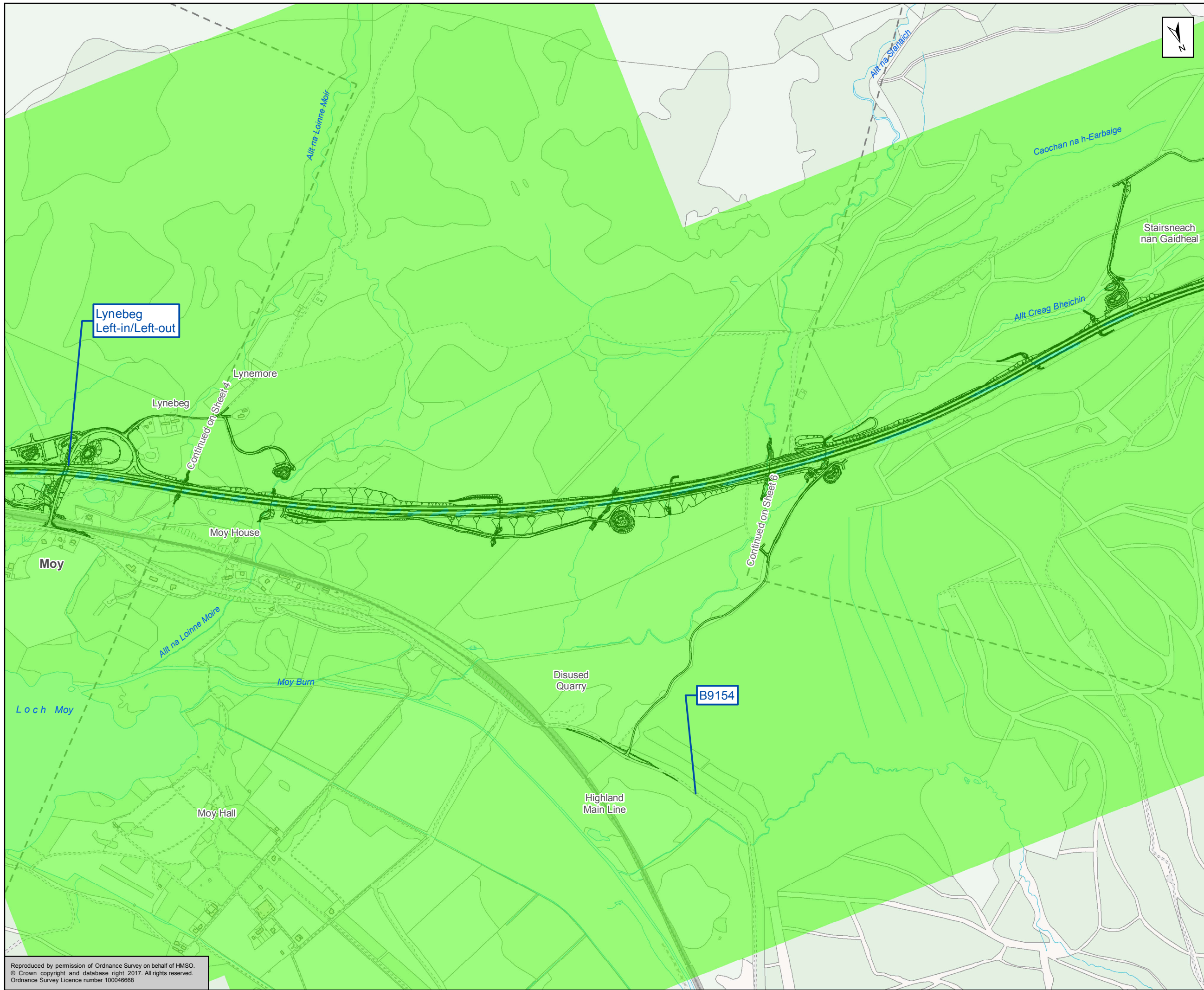
| | | | |
|--------|-------|------------|---|
| Status | FINAL | Subsidiary | B |
|--------|-------|------------|---|

Client

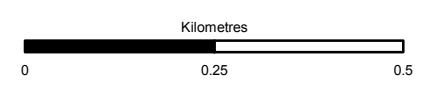
Figure 17.5d
Change in Noise by Design Year
Without Scheme
Sheet 4 of 6

| | | | | | | | | | |
|-----------------|-------------------------------------|-------|------------|---------|--------|----------|----------|------------|----|
| Scale | 1:10,000 | Drawn | LA | Checked | MK | Approved | RM | Authorised | SB |
| Document Number | Project | | Originator | | Volume | | Revision | | |
| | A9P12-AMJ-ENV-Z_ZZZZZ_XX-DR-GI-0018 | | | | | | P02 | | |
| Location | Type | Role | Number | | | | | | |

Reproduced by permission of Ordnance Survey on behalf of HMSO.
© Crown copyright and database right 2017. All rights reserved.
Ordnance Survey Licence number 100046668



- ~ Proposed Scheme
- Increase in Noise Level**
- dB L_{A10,18Hour}**
- 5.0 and above
 - 3.0 to 5.0
 - 1.0 to 3.0
 - 0.0 to 1.0
- Decrease in Noise Level**
- dB L_{A10,18Hour}**
- 1.0 to 0.0
 - 3.0 to -1.0
 - 5.0 to -3.0
 - 5.0 and below



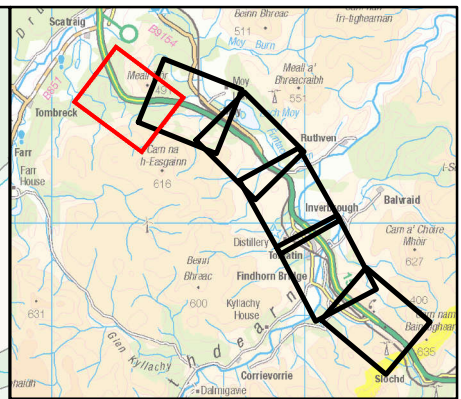
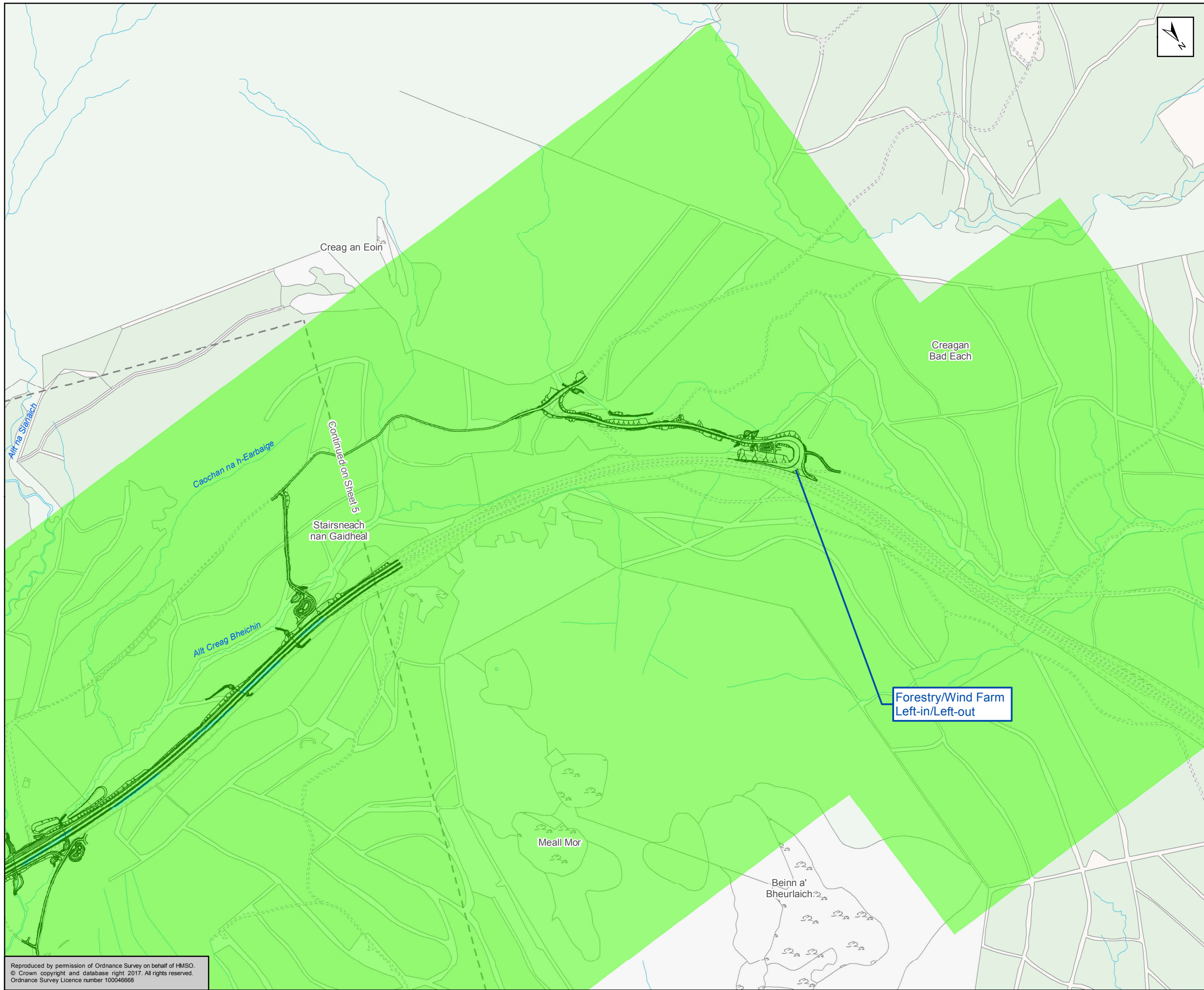
| | | | |
|--------|-------|------------|---|
| Status | FINAL | Subsidiary | B |
|--------|-------|------------|---|



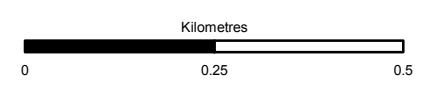
Figure 17.5e
Change in Noise by Design Year
Without Scheme
Sheet 5 of 6

| | | | | | | | | | | |
|-----------------|-------------------------------------|--------|----|---------|----|----------|----|------------|----------|-----|
| Scale | 1:10,000 | Drawn | LA | Checked | MK | Approved | RM | Authorised | SB | |
| Document Number | A9P12-AMJ-ENV-Z_ZZZZZ_XX-DR-GI-0019 | | | | | | | | Revision | P02 |
| Project | Originator | Volume | | | | | | | | |
| Location | Type | Role | | | | | | | | |

Reproduced by permission of Ordnance Survey on behalf of HMSO.
© Crown copyright and database right 2017. All rights reserved.
Ordnance Survey Licence number 100046668



- Proposed Scheme
- Increase in Noise Level**
- dB L_{A10,18Hour}**
- 5.0 and above
 - 3.0 to 5.0
 - 1.0 to 3.0
 - 0.0 to 1.0
- Decrease in Noise Level**
- dB L_{A10,18Hour}**
- 1.0 to 0.0
 - 3.0 to -1.0
 - 5.0 to -3.0
 - 5.0 and below



| | | | |
|--------|-------|------------|---|
| Status | FINAL | Subsidiary | B |
|--------|-------|------------|---|

Client

TRANSPORT SCOTLAND
COMHDHAIL ALBA

A9
DUALING
PERTH TO INVERNESS
Tomatin to Moy

ATKINS mouchel

Figure 17.5f
Change in Noise by Design Year
Without Scheme
Sheet 6 of 6

| | | | | | | | | | | |
|-----------------|-------------------------------------|--------|--------|---------|----|----------|----|------------|----------|-----|
| Scale | 1:10,000 | Drawn | LA | Checked | MK | Approved | RM | Authorised | SB | |
| Document Number | A9P12-AMJ-ENV-Z_ZZZZZ_XX-DR-GI-0024 | | | | | | | | Revision | P02 |
| Project | Originator | Volume | | | | | | | | |
| Location | Type | Role | Number | | | | | | | |

Reproduced by permission of Ordnance Survey on behalf of HMSO.
© Crown copyright and database right 2017. All rights reserved.
Ordnance Survey Licence number 100046668