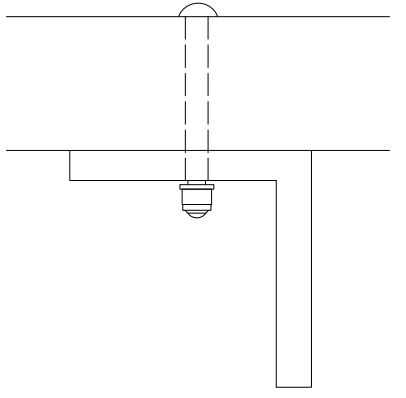
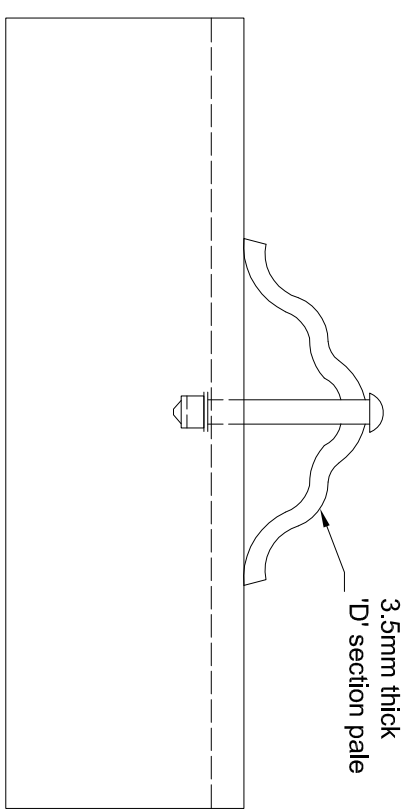


TYPICAL PLAN



'D' section Pale
Rail fixed to post via connector plate which is fixed to post by bolting or slotting

Poles fixed to 2 RSA rails with bolts, rivets or welding

Rail
40X40X6mm

- NOTES**
- All dimensions are in millimetres.
 - Standard finish is dipped is hot dipped Galvanised to BSEN ISO 1461.
 - All fencing shall be manufactured from materials specified within the requirements of BS 1722 part 12.
 - Posts can be supported by rammed backfill concrete ST2 as required.
 - All fixings are resistant to tampering.
 - Support foot on each panel provides resistance to ramming.

FITTINGS FOR 'D' SECTION PALES

FITTINGS FOR HORIZONTAL RAILS

CLIENT

The Scottish Government

PROJECT TITLE

M8 M73 M74
Motorway Improvements

REV	REVISIONS	BY	CHKD	APPD	DATE

AMENDMENTS

This map is based upon Ordnance Survey material with the permission of Ordnance Survey on behalf of the Controller of the Majesty's Stationery Office (Crown Copyright). Any use of this map, or any part thereof, in any form or by any means, may lead to prosecution or civil proceedings. Scottish Executive's License number: 100046668 2011.

DESIGN BY:	DM	CHECKED BY:	GG
DATE:	April 10	DATE:	April 10
DRAWN BY:	CF	APPROVED BY:	MB
DATE:	April 10	DATE:	April 10

DRAWING STATUS CONTRACT

ENGINEER

IN ASSOCIATION WITH

DRAWING TITLE

Accommodation Works
Galvanised Steel Fence
Type F11

SCALE @ A3 DRAWING NO M8MFJV/AW/011

REV	
-	