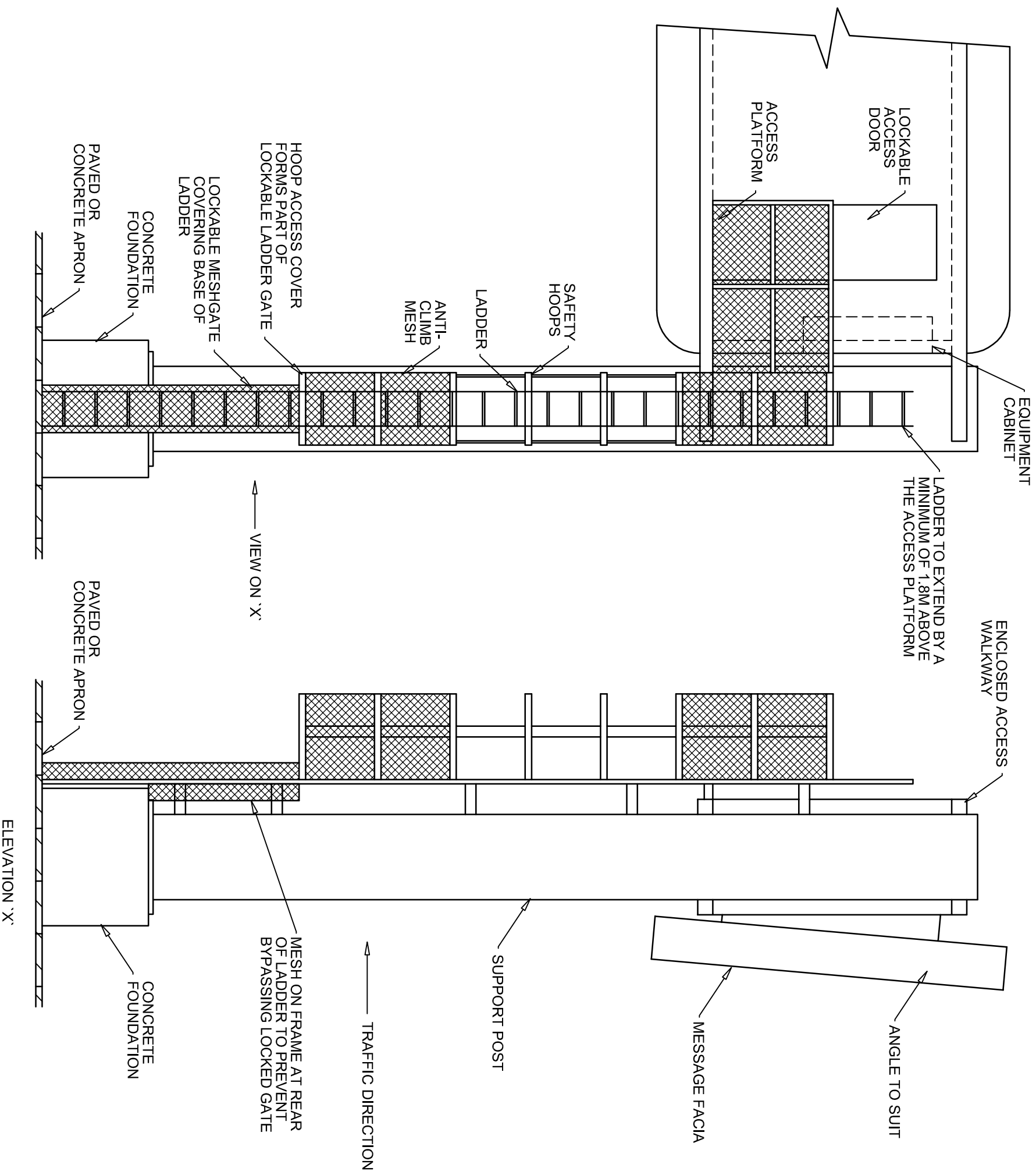


Note:
The NDX series of drawings represents non site specific installations of standard equipment and site layouts.



- NOTES
1. For ladder detail refer to Donyal structural drawings.
 2. Bottom ladder rung to be spaced such as to limit the variation of the bottom rung to ground level to be no greater than +/- 15mm.
 3. The gate lock to use the standardised key and be accessible from ground level.

This drawing was generated on computer and must not be manually updated

TYPICAL CANTILEVER VARIABLE MESSAGE SIGNS LADDER ACCESS

ORIGINAL DRAWING SIZE: 297 x 420		DRN	C.S.G.	CHKD	B.D.	SCALE
ALL DIMENSIONS ARE IN MM		DATE	06.10.09	DATE	12.10.09	N.T.S.
TOLERANCE +/- 1 UNLESS OTHERWISE STATED		DRG. NO.	NDX1001-02ga		SHT. NO.	3 of 3
THIRD ANGLE PROJECTION DO NOT SCALE		ISSUE	AMENDMENTS		APPD/DATE	
B	UPDATED SEE REV. SHT.				BD 30/11/09	
A	FIRST ISSUE				BD 12/10/09	