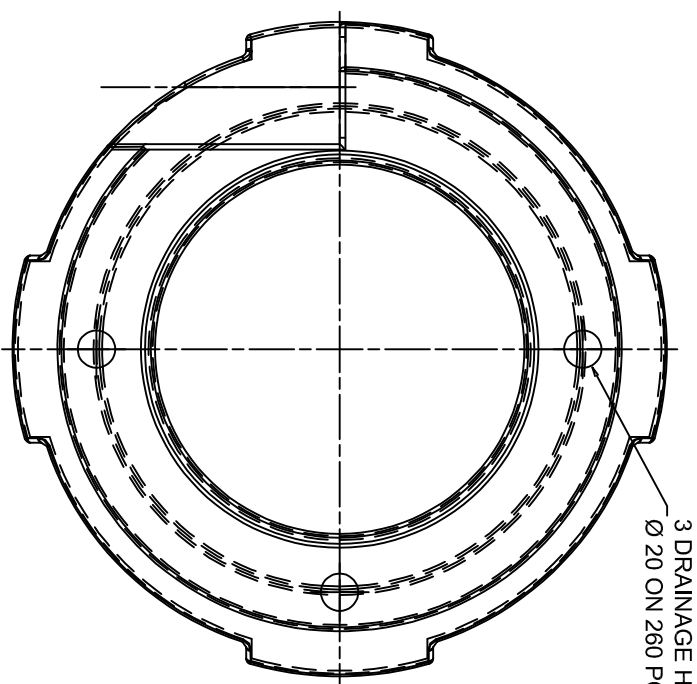


Note:
The NDX series of drawings represents non site specific installations of standard equipment and site layouts.

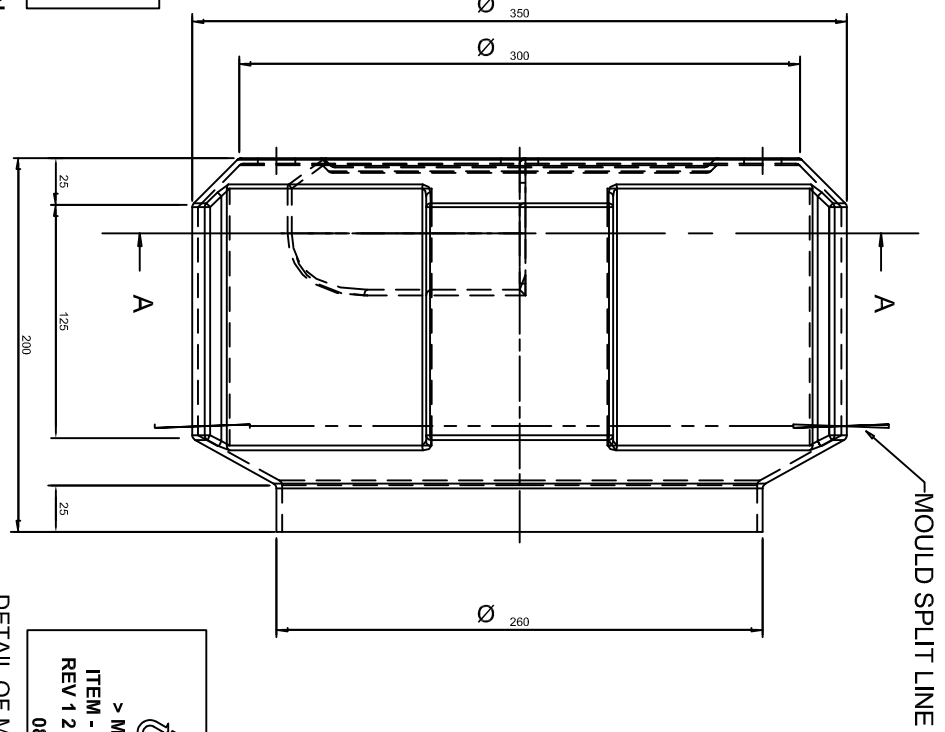


3 DRAINAGE HOLES
Ø 20 ON 260 PCD

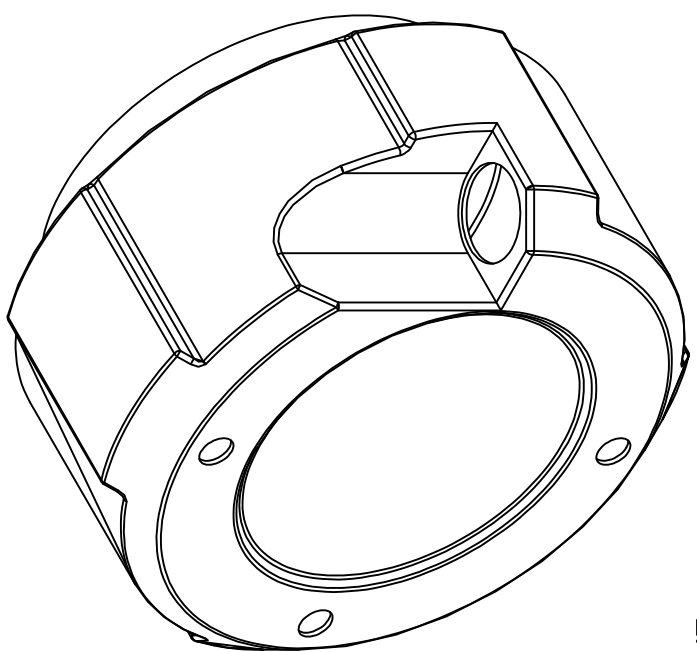
SUPPLIERS CODE AND MARK (REVISION) NUMBER
MANUFACTURES SERIAL NUMBER
IF REQUIRED BY MOULD TOOL SUPPLIER
HA STORES CODE FOR MOULD TOOL
CONTRACT NUMBER
TOTAL MOULD TOOL WEIGHT XXXkg

PROPERTY OF THE HIGHWAYS AGENCY
JEL/01/1 2 3 4 5 6 7 8 9
XXXXXX
ITEM-0000-0-000
1161
TOTAL MOULD TOOL WEIGHT XXXkg

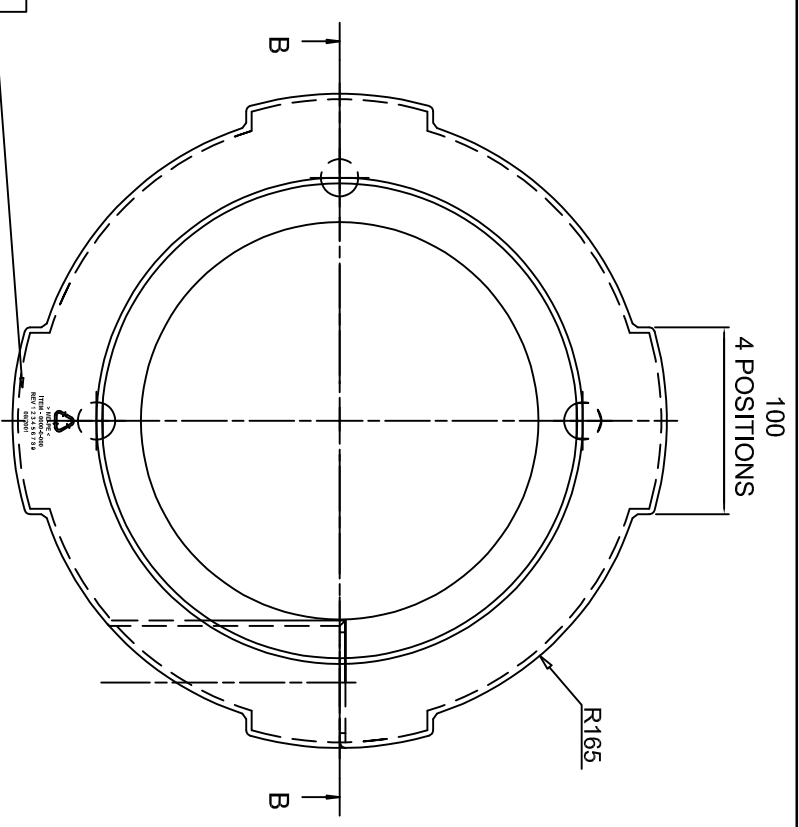
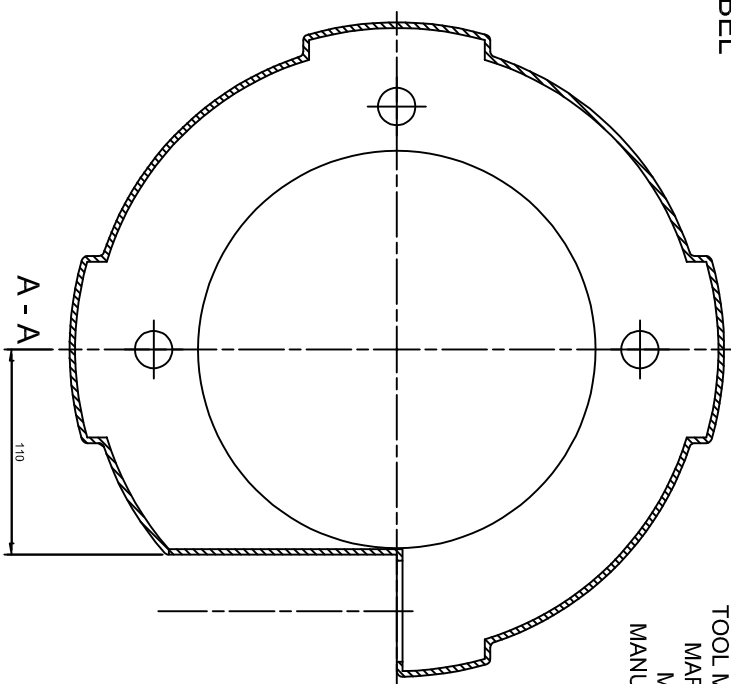
DETAIL OF MOULD TOOL
ENGRAVING OR LABEL



MOULD SPLIT LINE



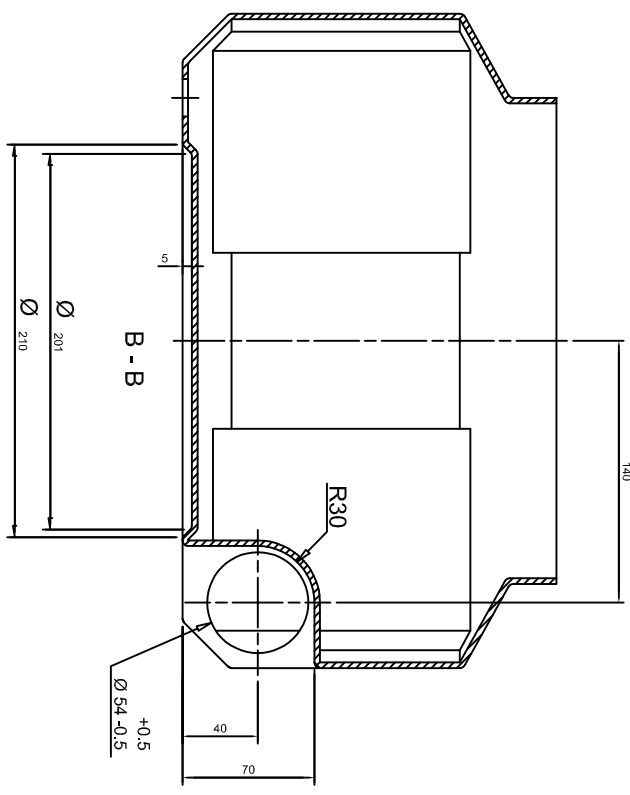
ISOMETRIC VIEW



100
4 POSITIONS

MD-PE
ITEM - 0000-0-000
REV 1 2 3 4 5 6 7 8 9
08/2001

DETAIL OF MOULDED PART
EMBOSSING TO BE ETCHED IN
TOOL MAXIMUM DEPTH 0.25 DATE
MARK TO BE SET INDICATE
MONTH AND YEAR OF
MANUFACTURE (DATE SHOWN
AS EXAMPLE ONLY)



- NOTES:
1. MATERIAL : RECYCLED MATERIAL - LINEAR MEDIUM DENSITY UV STABILISED POLYETHYLENE BOREALIS ME8158 / ME8159 OR AGREED EQUIVALENT
 2. COLOUR : BLACK
 3. SURFACE FINISH: LIGHT TEXTURED - SHOT PEEN No 3 POLYFORM STD No 7
 4. GENERAL WALL THICKNESS 3-4mm
 5. EXTERNAL RADII 3 UNLESS STATED OTHERWISE
 6. TO BE TRIMMED AND DRILLED AS SHOWN
 7. GENERAL TOLERANCE 0 - 50mm ±0.5mm OVER 50mm ±1% UNLESS STATED OTHERWISE
 8. MOULD TOOL FLASHING TO BE REMOVED WITH MINIMUM COSMETIC DISRUPTION
 9. TO BE DELIVERED WITHOUT MAJOR DISTORTION
 10. APPROXIMATE WEIGHT 0.85/1.13 Kg (DEPENDANT ON WALL THICKNESS)

This drawing was generated on computer and must not be manually updated

TYPICAL ERT 354 CABLE PIT MOULDING

| | | | | | | | | |
|--------------------------|--|---------------------------------------|--|----------|-----------------------|------|-------------|-----------|
| TITLE | | ORIGINAL DRAWING SIZE: 297 x 420 | | DRN | D.B. | CHKD | C.L. | APPD/DATE |
| ALL DIMENSIONS ARE IN MM | | TOLERANCE ± 1 UNLESS OTHERWISE STATED | | DATE | --- | DATE | --- | SCALE |
| THIRD ANGLE PROJECTION | | DO NOT SCALE | | DRG. NO. | NDX1049-02dt | | SHT. NO. | 16 of 18 |
| | | | | C | UPDATED SEE REV. SHT. | | BD 30/1/09 | |
| | | | | B | REDRAWN | | BD 13/10/09 | |
| | | | | A | INITIAL ISSUE | | - | |