

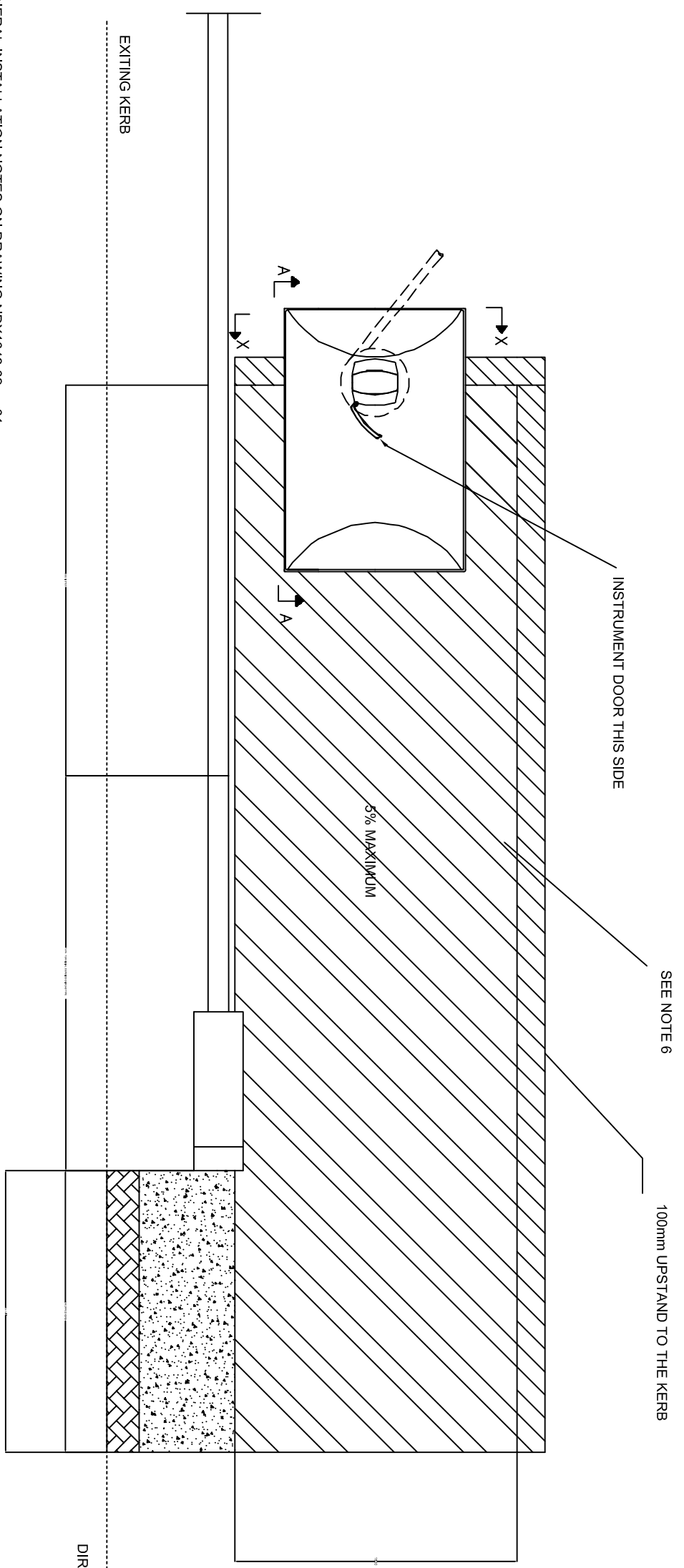
Note:
The NDX series of drawings represents non site specific installations of standard equipment and site layouts.

This drawing was generated on computer and must not be manually updated

TYPICAL ERT 354 END OF SAFETY FENCE WITH KERB - TYPE J

ORIGINAL DRAWING SIZE: 297 x 420	DRN	A.N.O.	CHKD	A.W.	APPD/DATE
ALL DIMENSIONS ARE IN MM	DATE	--	DATE	--	SCALE
TOLERANCE +- 1 UNLESS OTHERWISE STATED	DRG. NO.	NDX1049-02ga			SHT. NO.
THIRD ANGLE PROJECTION DO NOT SCALE					10 of 18

	100mm UPSTAND KERB
	LEVELLED HARD STANDING
	RAMP SURFACE (GRADIENT 2-8%)
	TACTILE BLISTER PAVING (IF APPLICABLE)



- NOTES
1. SEE GENERAL INSTALLATION NOTES ON DRAWING NDX1049-02no_01
 2. AT KERB SITES THE ACCESS RAMP UP TO THE PLINTH SHALL HAVE A GRADIENT OF NO GREATER THAN 5%
 3. SEE NOTE 3 ON DRAWING NDX1049-02ga_02
 4. WHEN INSTALLED ON AN EMBANKMENT, A HANDRAIL MAY BE REQUIRED (SEE DRAWING NDX1049-02dt_13). ADVICE AS TO WHETHER A HANDRAIL IS REQUIRED SHALL BE SOUGHT FROM THE OVERSEEING ORGANISATION.
 5. DISTANCE FROM THE END OF THE FULL HEIGHT BARRIER TO THE CENTRE OF THE POST IS SUBJECT TO A MINIMUM DISTANCE OF 1800MM.

