

Note:  
The NDX series of drawings represents non site specific installations of standard equipment and site layouts.

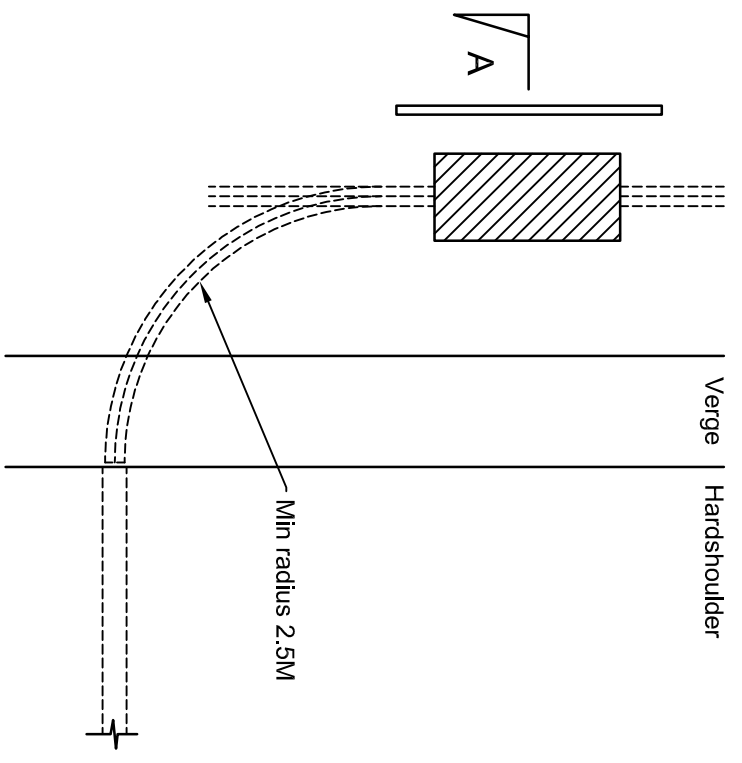
TITLE  
This drawing was generated on computer and must not be manually updated  
**TYPICAL INSTALLATION OF DEEP TRANSVERSE DUCTS**

ORIGINAL DRAWING SIZE: 297 x 420  
ALL DIMENSIONS ARE IN MM  
TOLERANCE +- 1 UNLESS OTHERWISE STATED  
THIRD ANGLE PROJECTION DO NOT SCALE

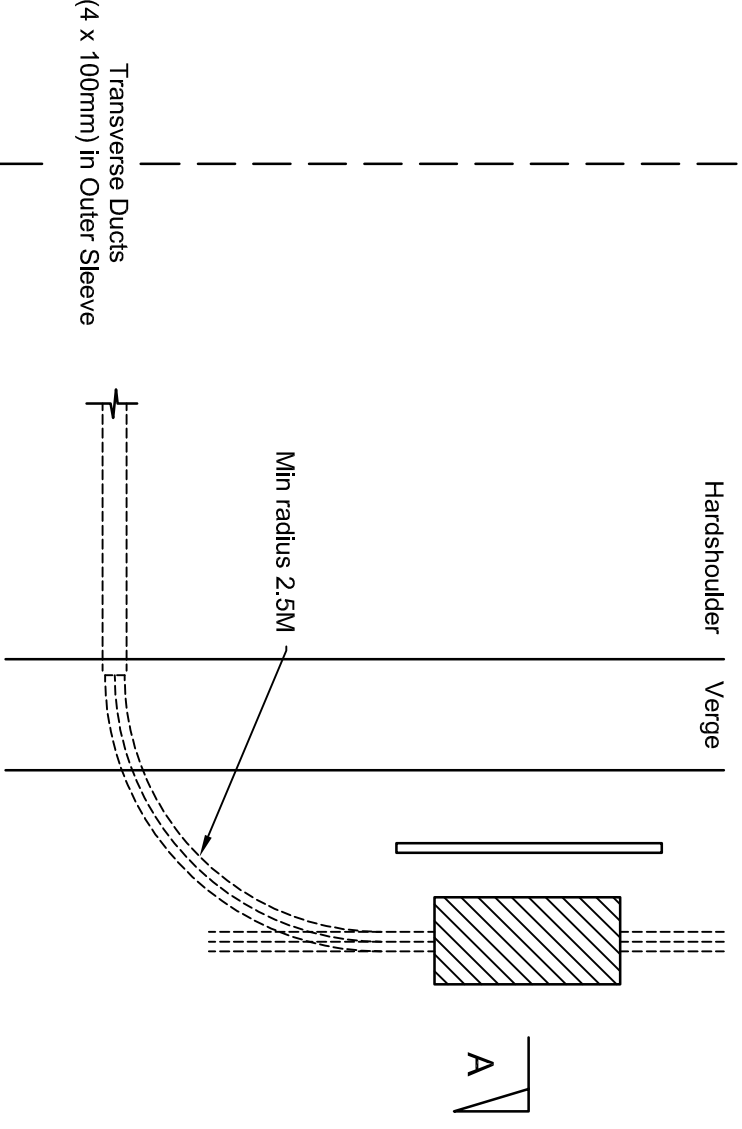
ISSUE	AMENDMENTS	APPD/DATE
B	REDDAWN	BD 30/1/09
A	FOR INFORMATION	BD 09/02/03
1	FIRST ISSUE	BD 07/12/01

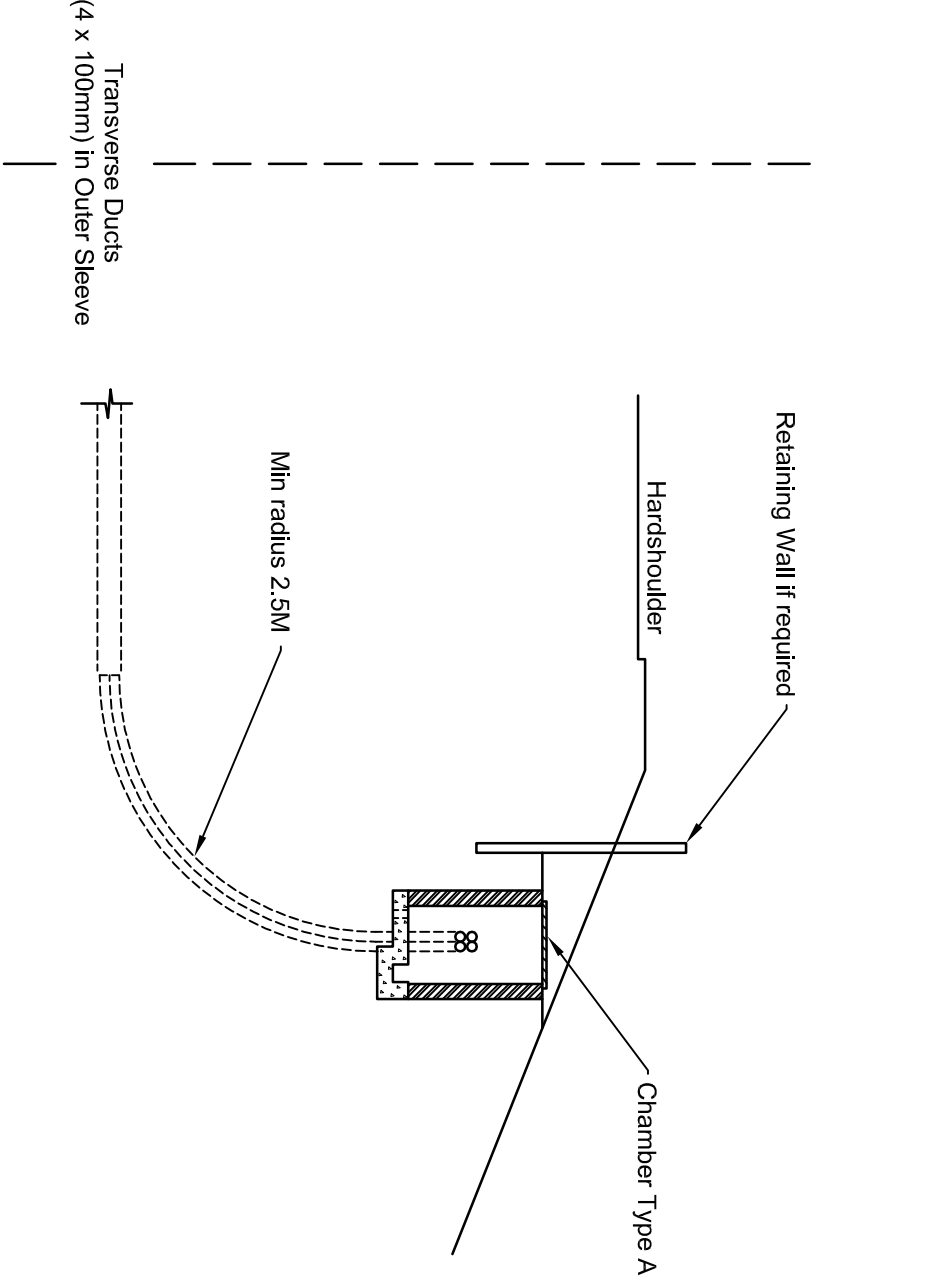
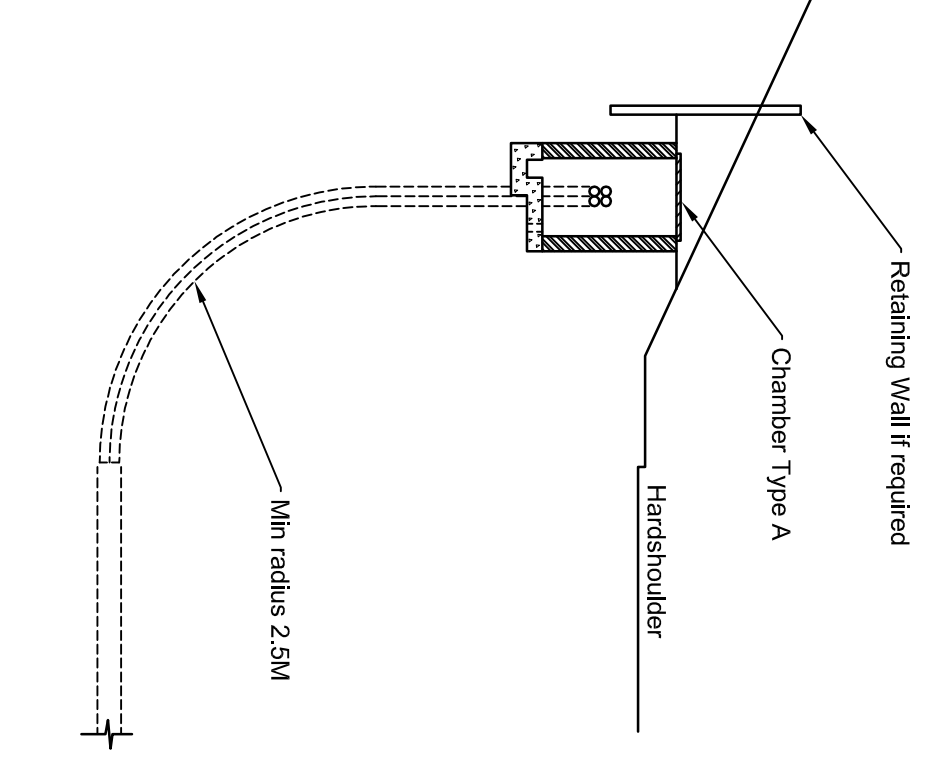
DRN	C.S.G.	CHKD	B.D.	SCALE
DATE	25.09.01	DATE	29.09.01	N.T.S.
DRG. NO.	NDX1063-00dt			SHT. NO. 2 of 10



PLAN



SECTION A - A



**NOTES**

1. This detail is to be used when the transverse ducts are too deep to be accommodated in a 2M deep chamber.
2. For chamber details see drawing NDX1063-01, 02 & 03.
3. Where the topography of the site dictates, a second chamber may be required in order to bring the ducts onto the line of the longitudinal duct route. The two chambers shall be linked with 4 x 100mm, straight ducts at right angles to the longitudinal cable route.