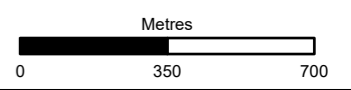


- Survey Area (100m)
- Proposed Scheme
- Works Boundary**
- Long Term Solution**
- Permanent Works
- Permanent Works - Water and SuDS
- Operational Boundary
- Operational Boundary - Water and SuDS
- Old Military Road Improvements**
- Permanent Works
- Operational Boundary
- Operational Boundary - Water and SuDS
- Access Only
- Mitigation Areas**
- Biodiversity Net Gain (BNG) and Natural Capital (NC) Enhancement Sites
- Ecological Mitigation Receptor Sites
- Automated Static Bat Detector Locations**
- Automated Static Bat Detector Locations

Note: The BNG and NC sites are shown for context, baseline information relating to these areas is covered in Volume 4, Appendix 11.16 Enhancement Site Survey Report.



Authorised and Accepted – Stage 3	A3
-----------------------------------	----

Client

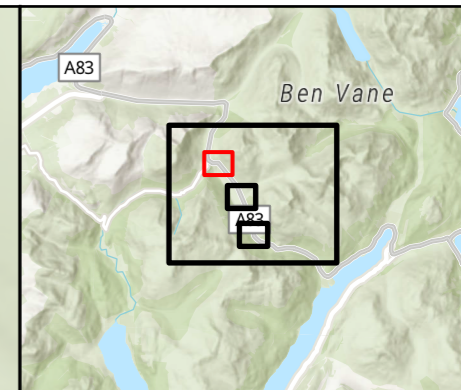
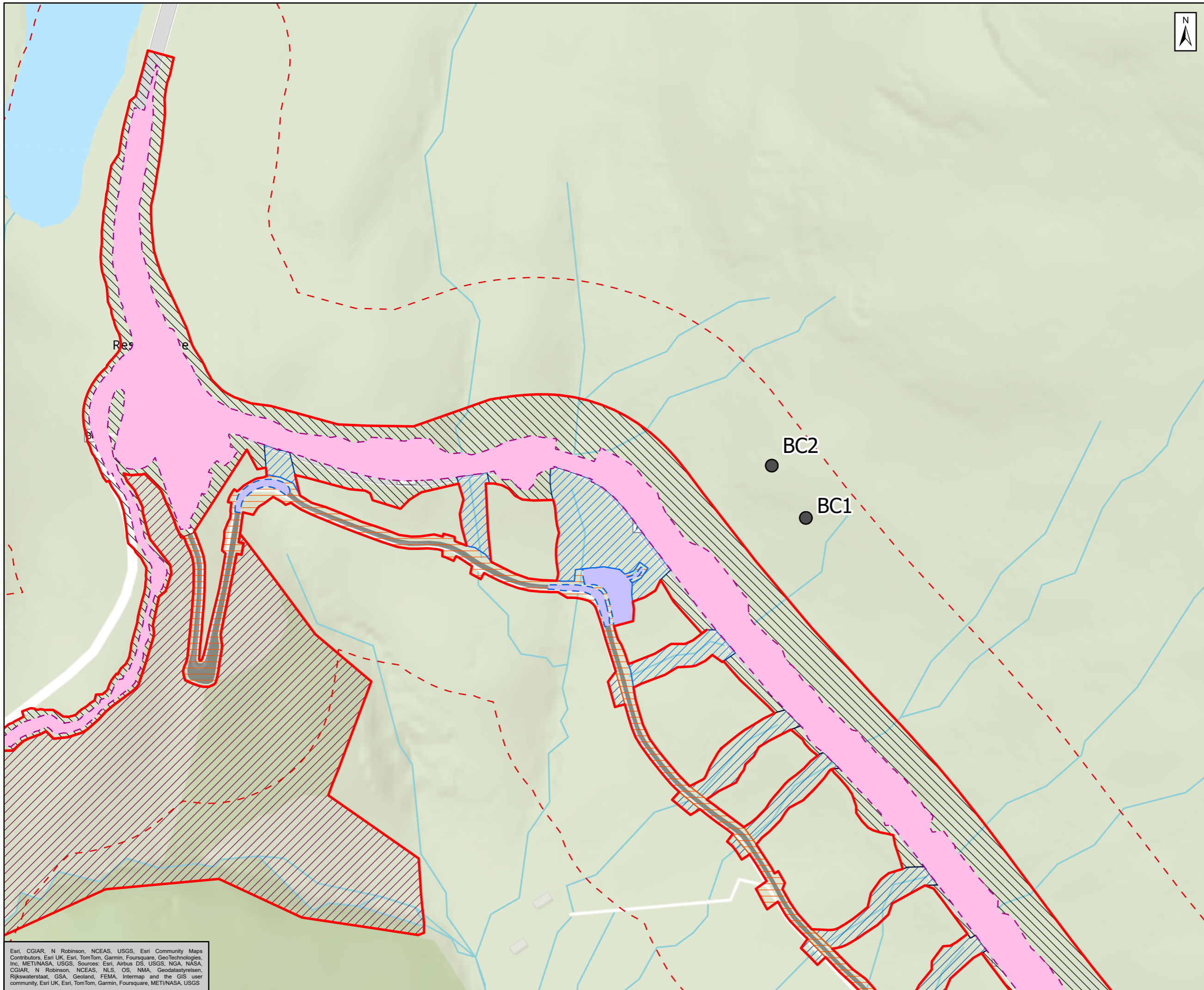
Project Title

## A83 Rest and Be Thankful

Figure 11.11d  
Automated Static Bat Detector  
Locations (Winter 2023-2024)  
Page 1 of 4

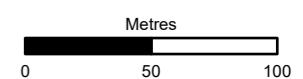
Scale: 1:18,000	Drawn: ET	Checked: RT	Approved: LG	Authorised: MR
Document Number	Project   Originator   Volume			Revision
A83AAB-AWJ-EAC-LTS_GEN-DR-VT-000335				C01
Location	Type	Role	Number	

Esri, Intermap, NASA, NGA, USGS, Esri, CGIAR, N Robinson, NCEAS, USGS, Esri Community Maps Contributors, Esri UK, Esri, TomTom, Garmin, Foursquare, GeoTechnologies, Inc, METI/NASA, USGS, Esri UK, Esri, TomTom, Garmin, Foursquare, METI/NASA, USGS



- Survey Area (100m)
- Proposed Scheme
- Works Boundary**
- Long Term Solution**
- Permanent Works
- Permanent Works - Water and SuDS
- Operational Boundary
- Operational Boundary - Water and SuDS
- Old Military Road Improvements**
- Permanent Works
- Operational Boundary
- Operational Boundary - Water and SuDS
- Access Only
- Mitigation Areas**
- Biodiversity Net Gain (BNG) and Natural Capital (NC) Enhancement Sites
- Ecological Mitigation Receptor Sites
- Automated Static Bat Detector Locations**
- Automated Static Bat Detector Locations

Note: The BNG and NC sites are shown for context, baseline information relating to these areas is covered in Volume 4, Appendix 11.16 Enhancement Site Survey Report.



Authorised and Accepted – Stage 3 A3



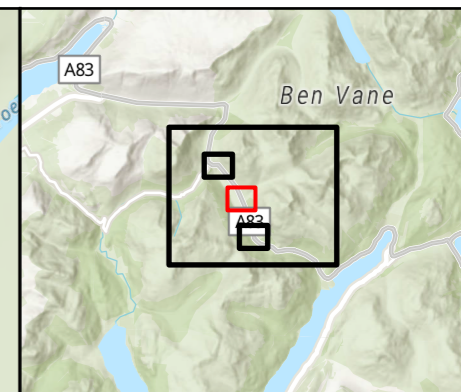
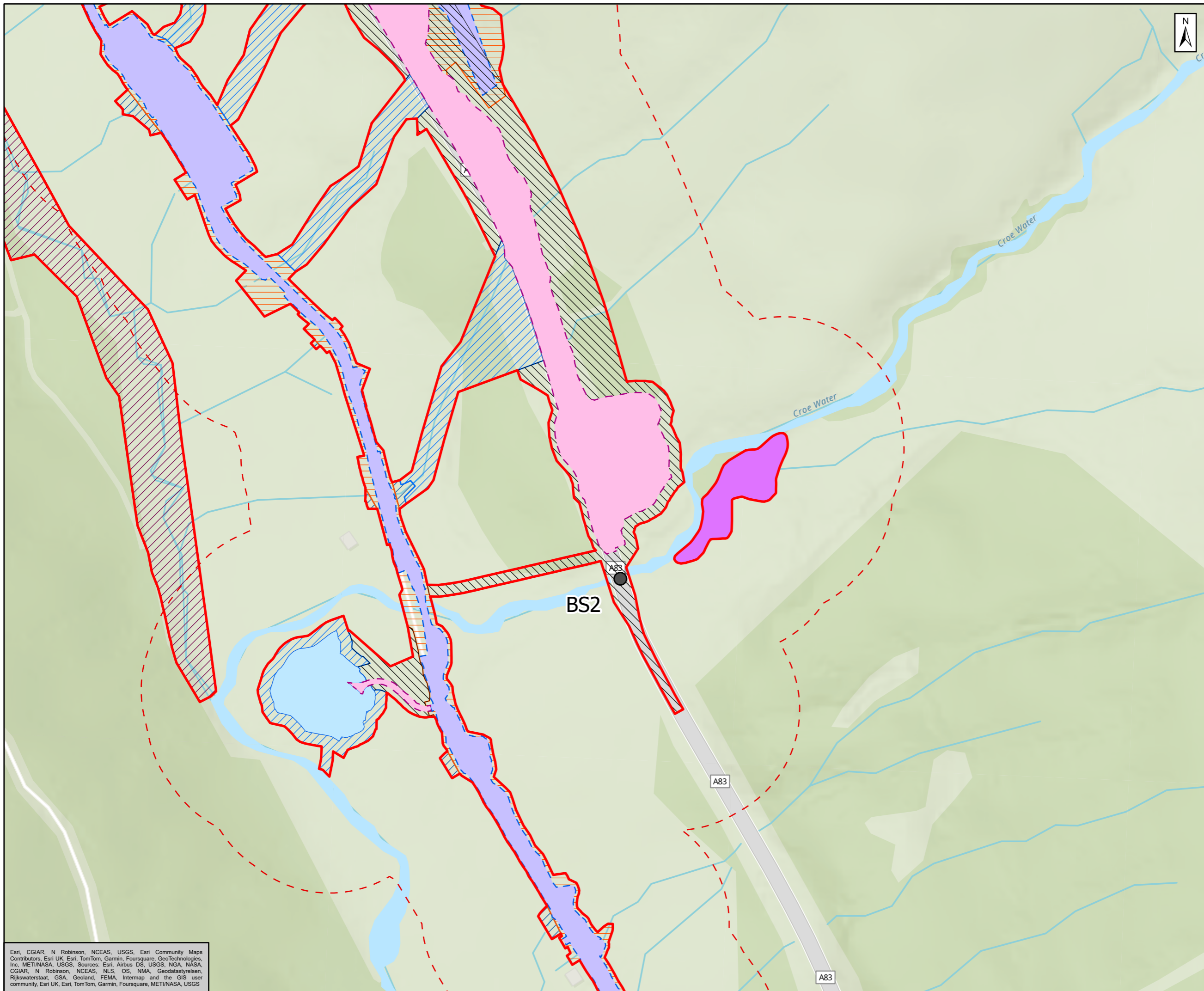
**A83 Rest and Be Thankful**



**Figure 11.11d**  
Automated Static Bat Detector Locations (Winter 2023-2024)  
Page 2 of 4

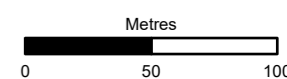
Scale	1:3,000	Drawn	ET	Checked	RT	Approved	LG	Authorised	MR
Document Number	Project			Originator			Volume		
A83AAB-AWJ-EAC-LTS_GEN-DR-VT-000335						C01			

Esri, CGIAR, N Robinson, NCEAS, USGS, Esri Community Maps Contributors, Esri UK, Esri, TomTom, Garmin, Foursquare, GeoTechnologies, Inc, METI/NASA, USGS, Sources: Esri, Airbus DS, USGS, NGA, NASA, CGIAR, N Robinson, NCEAS, NLS, OS, NMA, Geodatastyrelsen, Rijkswaterstaat, GSA, Geoland, FEMA, Intermap and the GIS user community, Esri UK, Esri, TomTom, Garmin, Foursquare, METI/NASA, USGS



- Survey Area (100m)
- Proposed Scheme
- Works Boundary**
- Long Term Solution**
- Permanent Works
- Permanent Works - Water and SuDS
- Operational Boundary
- Operational Boundary - Water and SuDS
- Old Military Road Improvements**
- Permanent Works
- Operational Boundary
- Operational Boundary - Water and SuDS
- Access Only
- Mitigation Areas**
- Biodiversity Net Gain (BNG) and Natural Capital (NC) Enhancement Sites
- Ecological Mitigation Receptor Sites
- Automated Static Bat Detector Locations**
- Automated Static Bat Detector Locations

Note: The BNG and NC sites are shown for context, baseline information relating to these areas is covered in Volume 4, Appendix 11.16 Enhancement Site Survey Report.



Authorised and Accepted – Stage 3 A3



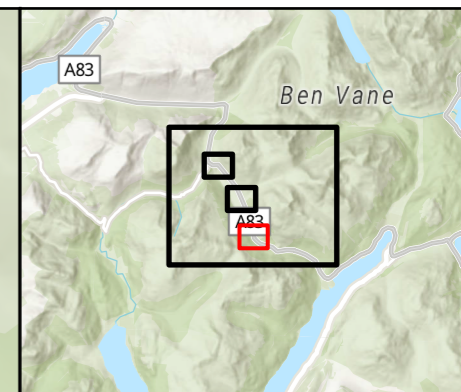
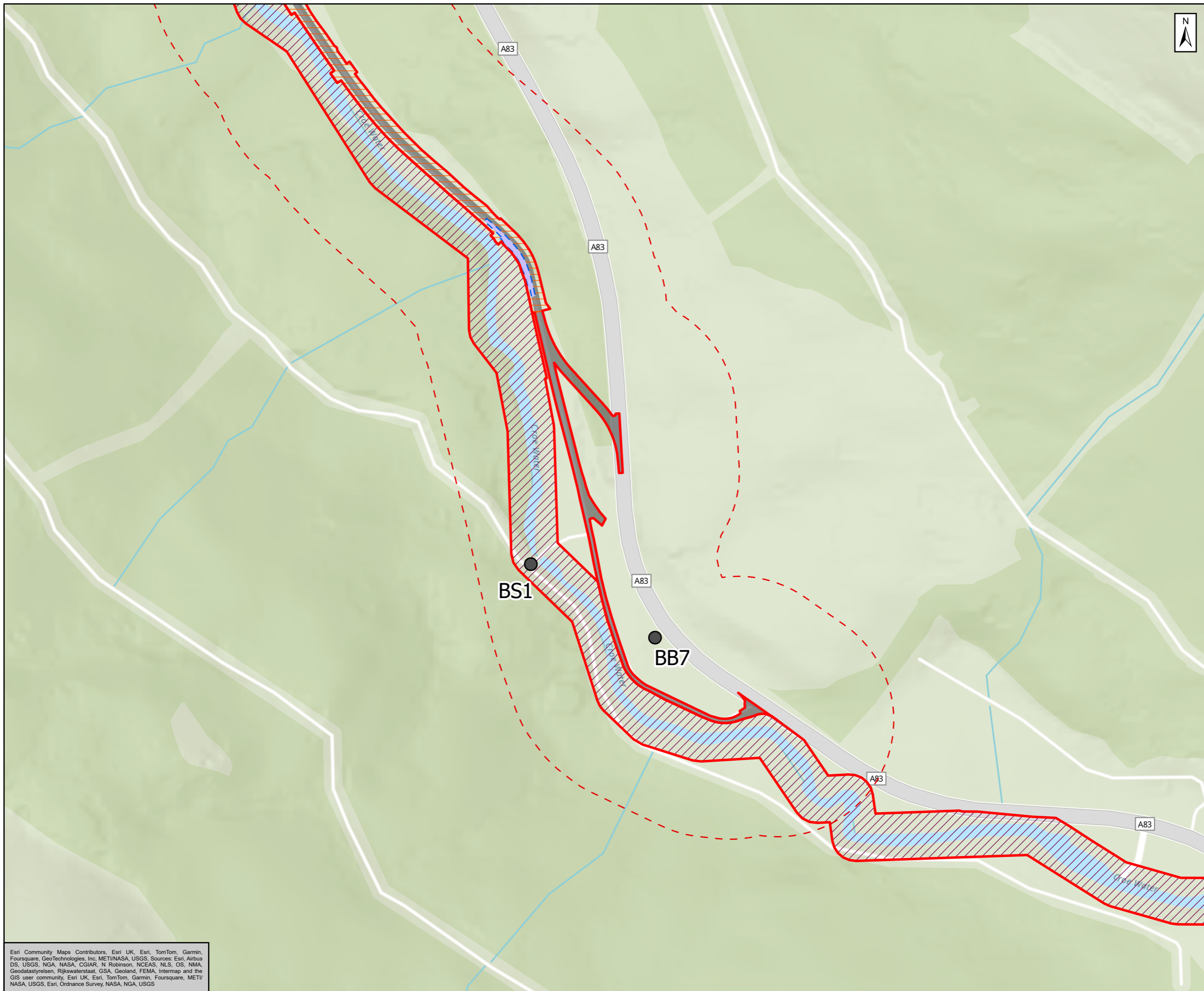
**A83 Rest and Be Thankful**



Figure 11.11d  
Automated Static Bat Detector  
Locations (Winter 2023-2024)  
Page 3 of 4

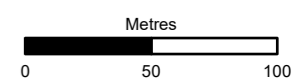
Scale: 1:3,000	Drawn: ET	Checked: RT	Approved: LG	Authorised: MR
Document Number	Project   Originator   Volume			Revision
A83AAB-AWJ-EAC-LTS_GEN-DR-VT-000335				C01
Location	Type	Role	Number	

Esri, CGIAR, N Robinson, NCEAS, USGS, Esri Community Maps Contributors, Esri UK, Esri, TomTom, Garmin, Foursquare, GeoTechnologies, Inc, METI/NASA, USGS, Sources: Esri, Airbus DS, USGS, NGA, NASA, CGIAR, N Robinson, NCEAS, NLS, OS, NMA, Geodatastyrelsen, Rijkswaterstaat, GSA, Geoland, FEMA, Intermap and the GIS user community, Esri UK, Esri, TomTom, Garmin, Foursquare, METI/NASA, USGS



- Survey Area (100m)
- Proposed Scheme
- Works Boundary**
- Long Term Solution**
- Permanent Works
- Permanent Works - Water and SuDS
- Operational Boundary
- Operational Boundary - Water and SuDS
- Old Military Road Improvements**
- Permanent Works
- Operational Boundary
- Operational Boundary - Water and SuDS
- Access Only
- Mitigation Areas**
- Biodiversity Net Gain (BNG) and Natural Capital (NC) Enhancement Sites
- Ecological Mitigation Receptor Sites
- Automated Static Bat Detector Locations**
- Automated Static Bat Detector Locations

Note: The BNG and NC sites are shown for context, baseline information relating to these areas is covered in Volume 4, Appendix 11.16 Enhancement Site Survey Report.



Sustainability	Status
Authorised and Accepted – Stage 3	A3



Project Title  
**A83 Rest and Be Thankful**



Figure 11.11d  
Automated Static Bat Detector  
Locations (Winter 2023-2024)  
Page 4 of 4

Scale	Drawn	Checked	Approved	Authorised
1:3,000	ET	RT	LG	MR
Document Number	Project	Originator	Volume	Revision
A83AAB-AWJ-EAC-LTS_GEN-DR-VT-000335				C01
Location	Type	Role	Number	

Esri Community Maps Contributors, Esri UK, Esri, TomTom, Garmin, Foursquare, GeoTechnologies, Inc, METI/NASA, USGS, Sources: Esri, Airbus DS, USGS, NGA, NASA, CGIAR, N Robinson, NCEAS, NLS, OS, NMA, Geodatastyrelsen, Rijkswaterstaat, GSA, Geoland, FEMA, Intermap and the GIS user community, Esri UK, Esri, TomTom, Garmin, Foursquare, METI/NASA, USGS, Esri, Ordnance Survey, NASA, NGA, USGS