

- Survey Area (250m)
- Proposed Scheme
- Biodiversity Net Gain (BNG) and Natural Capital (NC) Enhancement Sites
- Limited Survey Access
- National Vegetation Classification (NVC)**
- Aquatic Communities**
- A22/A23/A24 Mosaic
- Calcareous Grassland Communities**
- CG10
- CG11
- Mire Communities**
- M10
- M17
- M18/M2 Mosaic
- M21
- M23
- M23/M25 Mosaic
- M23b/M25 Mosaic
- M25
- M25b
- M25
- M4
- M4/M18 Mosaic
- M25/H21 Mosaic
- M6
- M4/M21 Mosaic
- Mesotrophic Grassland Communities**
- MG10
- MG7
- MG11
- MG6/MG7a Transition
- MG9
- MG9/W1/W21 Transition
- MG9/M23 Mosaic
- Calcareous Grassland and Montane Communities**
- U2
- U20
- U21
- U4
- U5/H14/U20/M23 Transition
- U4/U4/U6 Mosaic
- Woodland and Scrub Communities**
- W4
- W25a
- W25
- W24
- W21/W11 Transition
- W17
- W1
- W11
- W16
- Heath Communities**
- H12
- H12/H14/M25/U5/U20 Mosaic
- H12/H21 Mosaic
- H13
- H14
- H14/M10 Mosaic
- H18
- H21
- H9
- H21/M25 Mosaic
- H9/H10/H12/H14/H21 Mosaic
- Area not corresponding to any NVC Community
- Full NVC Survey Not Undertaken**
- Within BNG and NC Enhancement Sites
- Outside of BNG and NC Enhancement Sites

Note: Some watercourses are not mapped, in order to maintain clarity within mapping.

Metres

0      400      800

Subsidiary: Authorised and Accepted – Stage 3      Status: A3

Client: **TRANSPORT SCOTLAND**  
COMHDHAIL ALBA

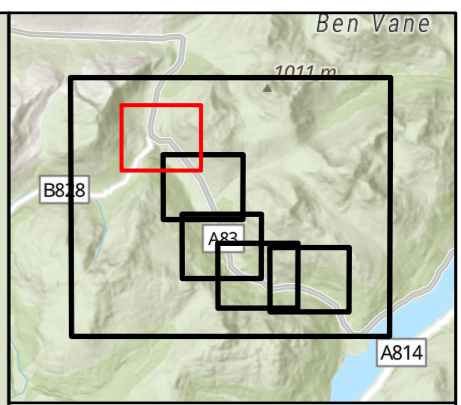
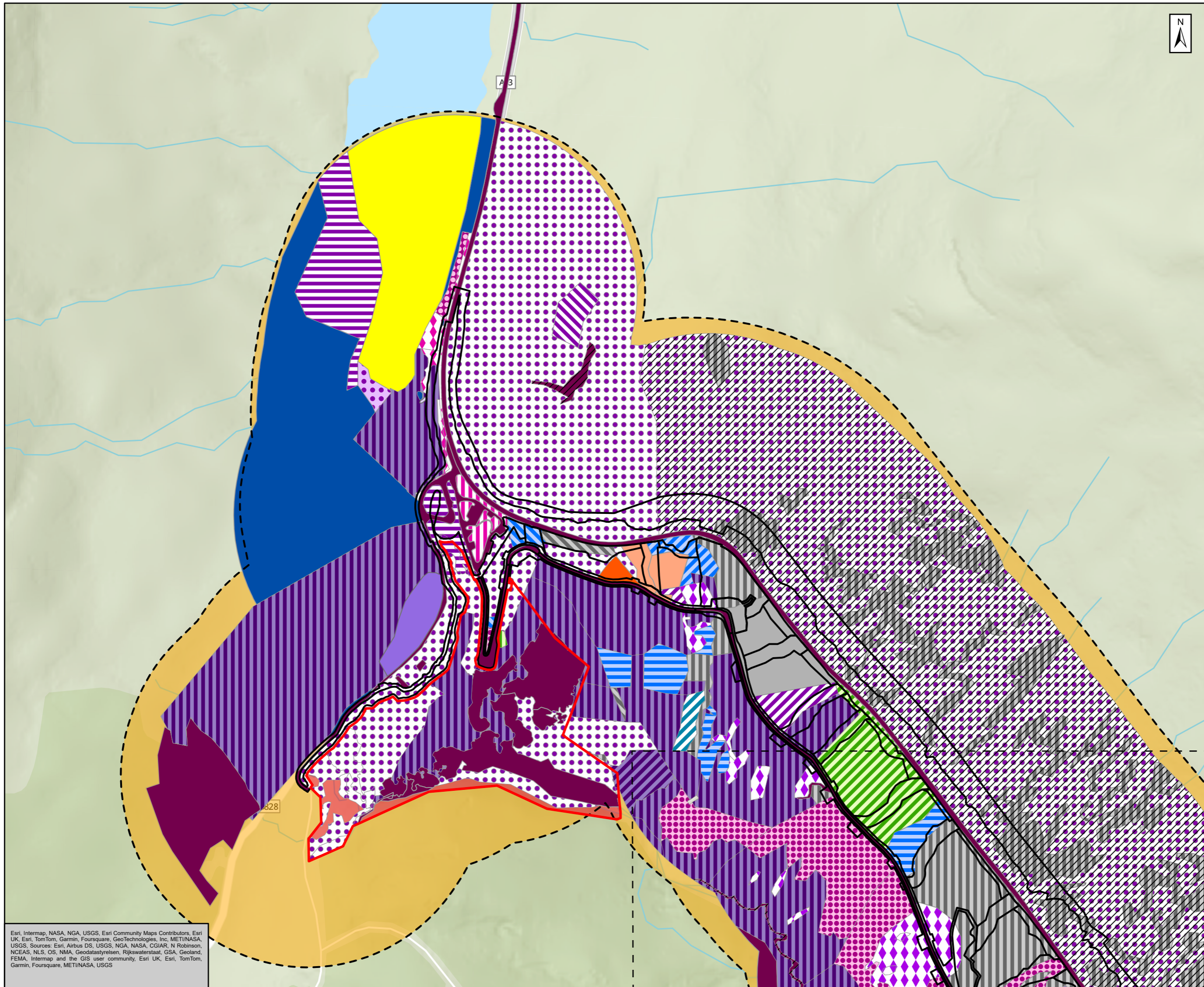
Project Title: **A83 Rest and Be Thankful**

**AtkinsRéalis**

Figure 11.4b  
Terrestrial Habitats  
(National Vegetation Classification)  
Page 1 of 6

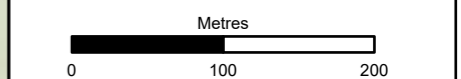
Scale: 1:20,000	Drawn: ET	Checked: RT	Approved: CW	Authorised: RG
Document Number: A83AAB-AWJ-EAC-LTS_GEN-DR-VT-000338	Project: A83AAB-AWJ-EAC-LTS_GEN-DR-VT-000338	Originator: [blank]	Volume: [blank]	Revision: C01
Location: [blank]	Type: [blank]	Role: [blank]	Number: [blank]	[blank]

Esri, Intermap, NASA, NGA, USGS, Esri UK, Esri, TomTom, Garmin, Foursquare, GeoTechnologies, Inc, METI/NASA, USGS, Esri UK, Esri, TomTom, Garmin, Foursquare, METI/NASA, USGS



- Survey Area (250m)
- Proposed Scheme
- Biodiversity Net Gain (BNG) and Natural Capital (NC) Enhancement Sites
- Limited Survey Access
- National Vegetation Classification (NVC)**
- Aquatic Communities**
- A22/A23/A24 Mosaic
- Calcareous Grassland Communities**
- CG10
- CG11
- Mire Communities**
- M10
- M17
- M18/M2 Mosaic
- M21
- M23
- M23/M25 Mosaic
- M23b/M25 Mosaic
- M23/M26 Mosaic
- M23a
- M25
- M6
- Mesotrophic Grassland Communities**
- MG10
- MG6/MG7a Transition
- MG9
- MG9/M23 Mosaic
- Calcareous Grassland and Montane Communities**
- U20
- U21
- U5/H14/U20/M23 Transition
- Woodland and Scrub Communities**
- W25a
- W25
- W17
- Heath Communities**
- H12/H14/M25/U5/U20 Mosaic
- H13
- H14
- H14/M10 Mosaic
- H21/M25 Mosaic
- Area not corresponding to any NVC Community**
- Area not corresponding to any NVC Community
- Full NVC Survey Not Undertaken**
- Within BNG and NC Enhancement Sites
- Outside of BNG and NC Enhancement Sites

Note: Some watercourses are not mapped, in order to maintain clarity within mapping.



Subsidiary: Authorised and Accepted – Stage 3 Status: A3



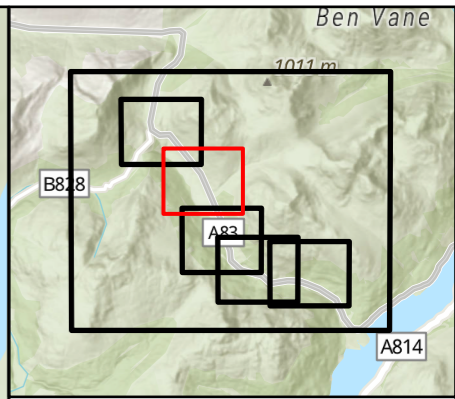
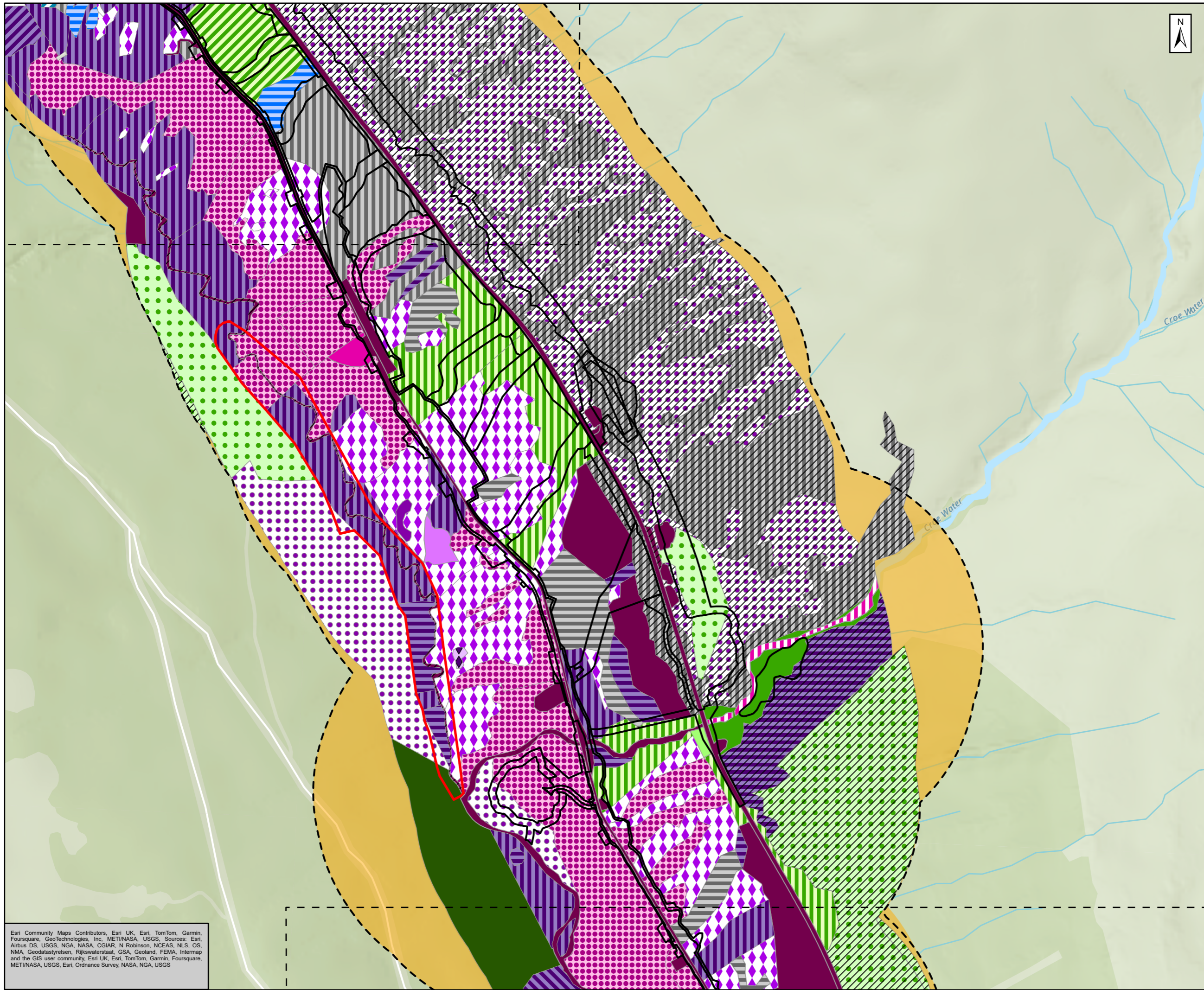
Project Title: A83 Rest and Be Thankful



Figure 11.4b  
Terrestrial Habitats  
(National Vegetation Classification)  
Page 2 of 6

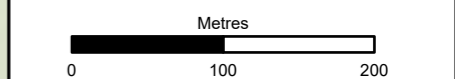
Scale	1:5,000	Drawn	ET	Checked	RT	Approved	CW	Authorised	RG
Document Number	Project   Originator   Volume							Revision	
	A83AAB-AWJ-EAC-LTS_GEN-DR-VT-000338							C01	
Location	Type	Role	Number						

Esri, Intermap, NASA, NGA, USGS, Esri Community Maps Contributors, Esri UK, Esri, TomTom, Garmin, Foursquare, GeoTechnologies, Inc, METI/NASA, USGS, Sources: Esri, Airbus DS, USGS, NGA, NASA, CGIAR, N Robinson, NCEAS, NLS, OS, NIMA, Geodatasysteisen, Rijkswaterstaat, GSA, Geoland, FEMA, Intermap and the GIS user community, Esri UK, Esri, TomTom, Garmin, Foursquare, METI/NASA, USGS



- Survey Area (250m)
- Proposed Scheme
- Biodiversity Net Gain (BNG) and Natural Capital (NC) Enhancement Sites
- Limited Survey Access
- National Vegetation Classification (NVC)**
- Mire Communities**
- M21
- M23
- M23/M25 Mosaic
- M25
- M4
- M4/M18 Mosaic
- M25/H21 Mosaic
- M5
- M4/M21 Mosaic
- Mesotrophic Grassland Communities**
- MG10
- MG7
- MG6/MG7a Transition
- Calcifugous Grassland and Montane Communities**
- U20
- U4
- Woodland and Scrub Communities**
- W4
- W25a
- W25
- W17
- W1
- W16
- Heath Communities**
- H14
- H14/M10 Mosaic
- Area not corresponding to any NVC Community**
- Area not corresponding to any NVC Community
- Full NVC Survey Not Undertaken**
- Outside of BNG and NC Enhancement Sites

Note: Some watercourses are not mapped, in order to maintain clarity within mapping.



Subsidiary: Authorised and Accepted – Stage 3      Status: A3

Client: **TRANSPORT SCOTLAND**  
CÒMHDHAIL ALBA

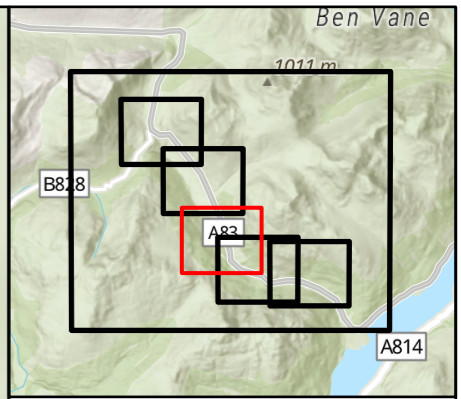
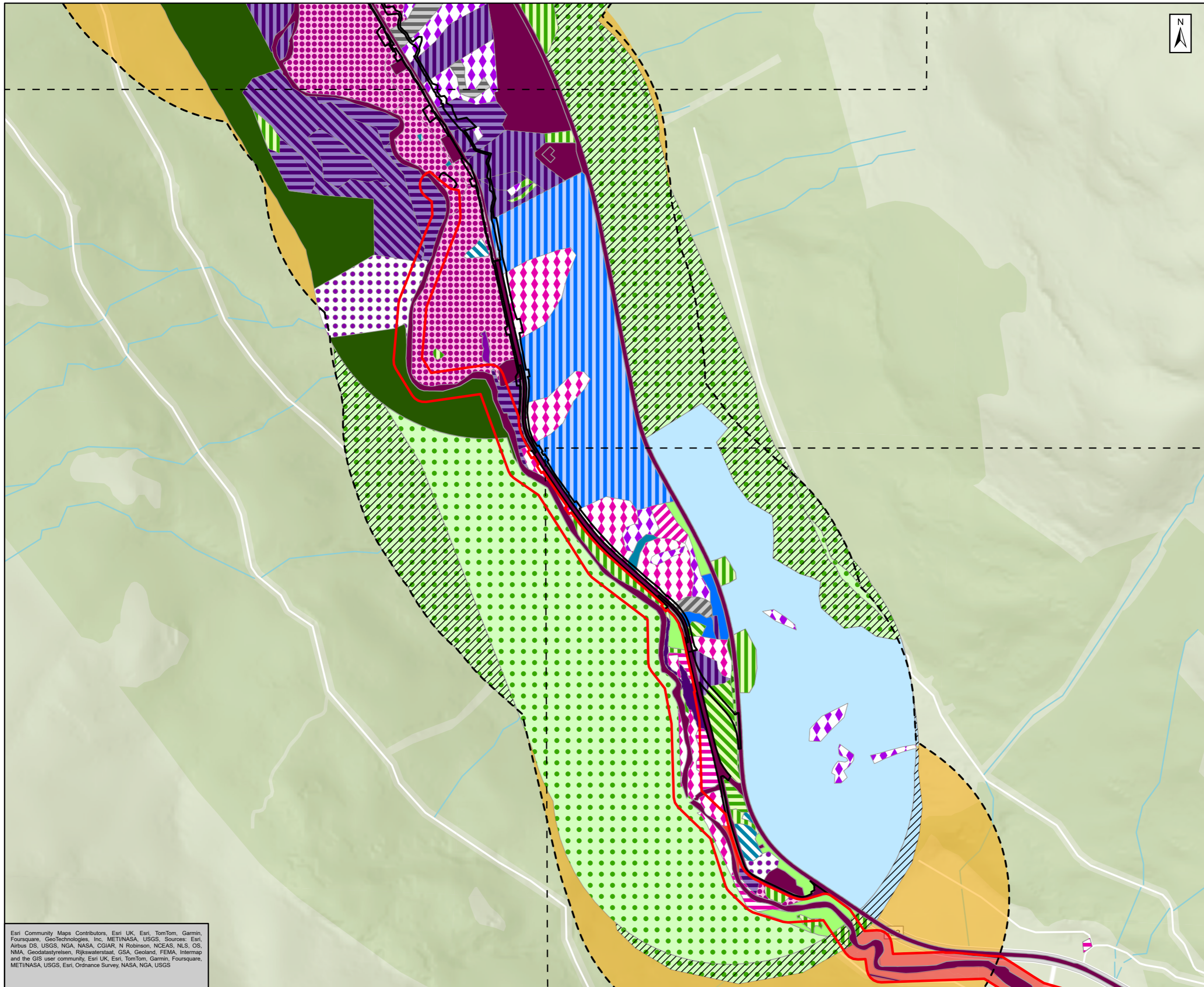
Project Title: **A83 Rest and Be Thankful**

Title: **AtkinsRéalis WSP**

Figure 11.4b  
Terrestrial Habitats  
(National Vegetation Classification)  
Page 3 of 6

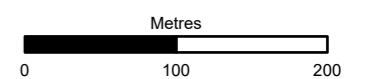
Scale: 1:5,000	Drawn: ET	Checked: RT	Approved: CW	Authorised: RG
Document Number: A83AAB-AWJ-EAC-LTS_GEN-DR-VT-000338	Project: A83AAB-AWJ-EAC-LTS_GEN-DR-VT-000338	Originator: [blank]	Volume: [blank]	Revision: C01
Location: [blank]	Type: [blank]	Role: [blank]	Number: [blank]	[blank]

Esri Community Maps Contributors, Esri UK, Esri, TomTom, Garmin, Foursquare, GeoTechnologies, Inc, METI/NASA, USGS, Sources: Esri, Airbus DS, USGS, NGA, NASA, CGIAR, N Robinson, NCEAS, NLS, OS, NMA, Geodatastyrelsen, Rijkswaterstaat, GSA, Geoland, FEMA, Intermap and the GIS user community, Esri UK, Esri, TomTom, Garmin, Foursquare, METI/NASA, USGS, Esri, Ordnance Survey, NASA, NGA, USGS



Survey Area (250m)	Woodland and Scrub Communities
Proposed Scheme	W24
Biodiversity Net Gain (BNG) and Natural Capital (NC) Enhancement Sites	W21/W11 Transition
Limited Survey Access	W17
<b>National Vegetation Classification (NVC)</b>	W1
<b>Mire Communities</b>	W11
M23	W16
M23/M25 Mosaic	<b>Heath Communities</b>
M23b	H12
M25	H12/H21 Mosaic
M4	H18
M25/H21 Mosaic	H21
M6	H9
<b>Mesotrophic Grassland Communities</b>	H9/H10/H12/H14/H21 Mosaic
MG10	<b>Area not corresponding to any NVC Community</b>
MG11	Area not corresponding to any NVC Community
MG9	Area not corresponding to any NVC Community
MG9/W1/W21 Transition	<b>Full NVC Survey Not Undertaken</b>
<b>Calcifugous Grassland and Montane Communities</b>	Within BNG and NC Enhancement Sites
U2	Outside of BNG and NC Enhancement Sites
U4	

Note: Some watercourses are not mapped, in order to maintain clarity within mapping.



Subsidiary: Authorised and Accepted – Stage 3 Status: A3



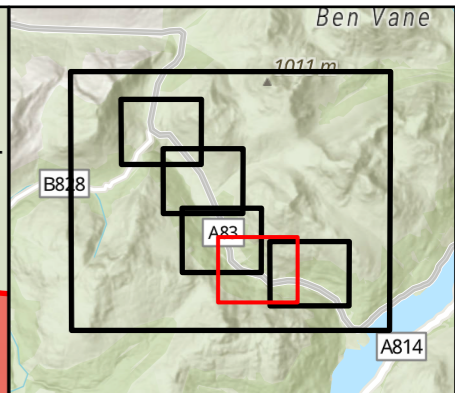
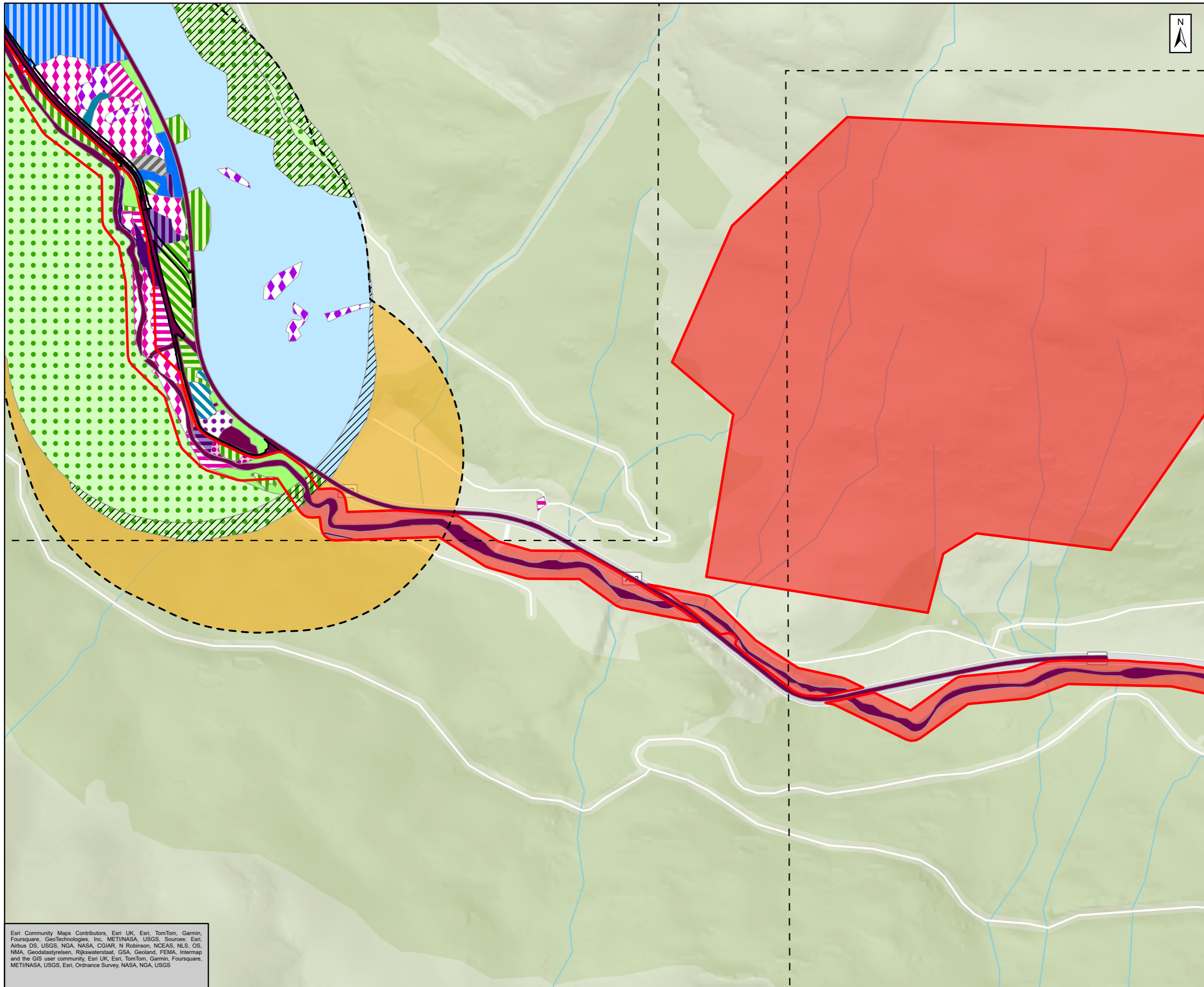
Project Title: A83 Rest and Be Thankful



Figure 11.4b  
Terrestrial Habitats  
(National Vegetation Classification)  
Page 4 of 6

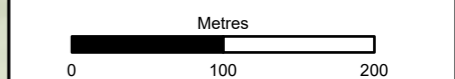
Scale: 1:5,000	Drawn: ET	Checked: RT	Approved: CW	Authorised: RG
Document Number: A83AAB-AWJ-EAC-LTS_GEN-DR-VT-000338	Project: A83AAB-AWJ-EAC-LTS_GEN-DR-VT-000338	Originator: [blank]	Volume: [blank]	Revision: C01
Location: [blank]	Type: [blank]	Role: [blank]	Number: [blank]	

Esri Community Maps Contributors, Esri UK, Esri, TomTom, Garmin, Foursquare, GeoTechnologies, Inc, METI/NASA, USGS, Sources: Esri, Airbus DS, USGS, NGA, NASA, CGIAR, N Robinson, NCEAS, NLS, OS, NMA, Geodatastyrelsen, Rijkswaterstaat, GSA, Geoland, FEMA, Intermap and the GIS user community, Esri UK, Esri, TomTom, Garmin, Foursquare, METI/NASA, USGS, Esri, Ordnance Survey, NASA, NGA, USGS



<ul style="list-style-type: none"> <li>Survey Area (250m)</li> <li>Proposed Scheme</li> <li>Biodiversity Net Gain (BNG) and Natural Capital (NC) Enhancement Sites</li> <li>Limited Survey Access</li> </ul>	<ul style="list-style-type: none"> <li>Woodland and Scrub Communities</li> <li>W25</li> <li>W24</li> <li>W21/W11 Transition</li> <li>W17</li> <li>W1</li> <li>W11</li> </ul>
<ul style="list-style-type: none"> <li>National Vegetation Classification (NVC)</li> <li>Mire Communities</li> <li>M23</li> <li>M23/M25 Mosaic</li> <li>M23b</li> <li>M25</li> <li>M6</li> <li>Mesotrophic Grassland Communities</li> <li>MG10</li> <li>MG11</li> <li>MG9</li> <li>MG9/W1/W21 Transition</li> <li>Calcifugous Grassland and Montane Communities</li> <li>U2</li> </ul>	<ul style="list-style-type: none"> <li>Heath Communities</li> <li>H12</li> <li>H12/H21 Mosaic</li> <li>H21</li> <li>H9</li> <li>H9/H10/H12/H14/H21 Mosaic</li> <li>Area not corresponding to any NVC Community</li> <li>Area not corresponding to any NVC Community</li> <li>Full NVC Survey Not Undertaken</li> <li>Within BNG and NC Enhancement Sites</li> <li>Outside of BNG and NC Enhancement Sites</li> </ul>

Note: Some watercourses are not mapped, in order to maintain clarity within mapping.



Subsidiary: Authorised and Accepted – Stage 3 Status: A3

Client: **TRANSPORT SCOTLAND**  
COMHDHAIL ALBA

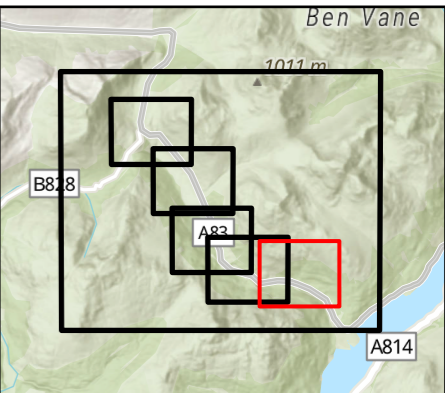
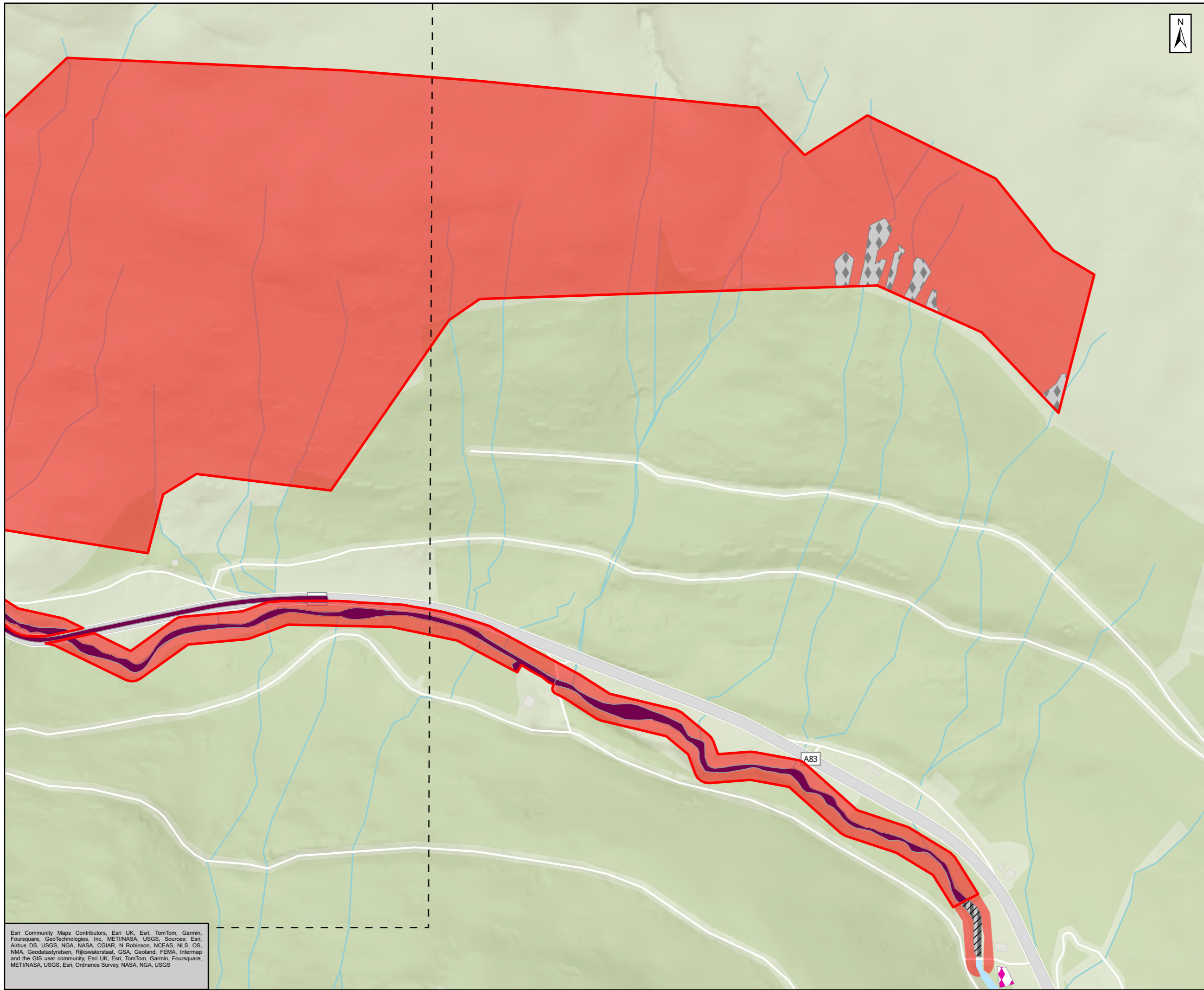
Project Title: **A83 Rest and Be Thankful**

**AtkinsRéalis** *wsp*

Figure 11.4b  
Terrestrial Habitats  
(National Vegetation Classification)  
Page 5 of 6

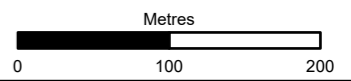
Scale: 1:5,000	Drawn: ET	Checked: RT	Approved: CW	Authorised: RG
Document Number: A83AAB-AWJ-EAC-LTS_GEN-DR-VT-000338	Project: A83AAB-AWJ-EAC-LTS_GEN-DR-VT-000338	Originator: [blank]	Volume: [blank]	Revision: C01
Location: [blank]	Type: [blank]	Role: [blank]	Number: [blank]	[blank]

Esri Community Maps Contributors, Esri UK, Esri, TomTom, Garmin, Foursquare, GeoTechnologies, Inc, METI/NASA, USGS, Sources: Esri, Airbus DS, USGS, NGA, NASA, CGIAR, N Robinson, NCEAS, NLS, OS, NMA, Geodatastyrelsen, Rijkswaterstaat, GSA, Geoland, FEMA, Intermap and the GIS user community, Esri UK, Esri, TomTom, Garmin, Foursquare, METI/NASA, USGS, Esri, Ordnance Survey, NASA, NGA, USGS



- Proposed Scheme
- Biodiversity Net Gain (BNG) and Natural Capital (NC) Enhancement Sites
- Area not corresponding to any NVC Community
- Full NVC Survey Not Undertaken
- Within BNG and NC Enhancement Sites
- Mesotrophic Grassland Communities
- MGR
- Calcifugous Grassland and Montane Communities
- U20
- U4/U4/U6 Mosaic
- Limited Survey Access

Note: Some watercourses are not mapped, in order to maintain clarity within mapping.



Subsidiary: Authorised and Accepted – Stage 3 Status: A3

Client:

Project Title: A83 Rest and Be Thankful

Title: Figure 11.4b Terrestrial Habitats (National Vegetation Classification) Page 6 of 6

Scale: 1:5,000	Drawn: ET	Checked: RT	Approved: CW	Authorised: RG
Document Number: A83AAB-AWJ-EAC-LTS_GEN-DR-VT-000338	Project: A83AAB-AWJ-EAC-LTS_GEN-DR-VT-000338	Originator:	Volume:	Revision: C01
Location:	Type:	Role:	Number:	

Esri Community Maps Contributors, Esri UK, Esri, TomTom, Garmin, Foursquare, GeoTechnologies, Inc, MET/NASA, USGS, Sources: Esri, Airbus DS, USGS, NGA, NASA, CGIAR, N Robinson, NCEAS, NLS, OS, NMA, Geodatastyrelsen, Rijkswaterstaat, GSA, Geoland, FEMA, Intermap and the GIS user community, Esri UK, Esri, TomTom, Garmin, Foursquare, MET/NASA, USGS, Esri, Ordnance Survey, NASA, NGA, USGS