

**GENERAL NOTES**

1. ALL DIMENSIONS IN METRES UNLESS STATED OTHERWISE.
2. THIS PRELIMINARY DESIGN INDICATES EARTHWORK SLOPES AT 1 IN 4.
3. DESIGN INTERFACED TO DRAFT TOPOGRAPHICAL INFORMATION RECEIVED FROM BLOM.

**LEGEND:**

- HYDROLOGY**
- RIVER / STREAM / LOCHS
  - SEPA FLOOD MAPPING (1:200 YEAR)
- INFRASTRUCTURE**
- BEAUTY TO DENNY PYLONS
  - RAIL
  - EXISTING ROADS
  - NMU FACILITIES (PEDESTRIAN, CYCLIST AND EQUESTRIAN ROUTES)
  - NATURAL EARTHWORKS SLOPE
  - VARIABLE EARTHWORKS
  - CARRIAGEWAY
  - CENTRAL RESERVE / VERGE
- KEY ENVIRONMENTAL CONSTRAINTS**
- ANCIENT WOODLANDS (INVENTORY)
  - BATTLEFIELD SITES
  - BIOLOGICAL SSSI
  - CAIRNGORMS NATIONAL PARK (BOUNDARY)
  - CONSERVATION AREAS
  - GEOLOGICAL CONSERVATION REVIEW SITES
  - GEOLOGICAL SSSI
  - HISTORIC BUILDINGS AND DESIGNED LANDSCAPES
  - LISTED BUILDINGS
  - MIXED SSSI
  - NATIONAL NATURE RESERVES
  - NATIONAL SCENIC AREAS
  - RAMSAR SITE
  - SAC (SPECIAL AREA OF CONSERVATION)
  - SCHEDULED MONUMENTS
  - SPA (SPECIAL PROTECTION AREA)
  - PEAT AREAS
  - ROCK CUTTING
- EXISTING SERVICES**
- OBT - OVERHEAD CABLE
  - UBT - UNDERGROUND CABLE
  - OH HV - HIGH VOLTAGE OVERHEAD CABLE
  - UG HV - HIGH VOLTAGE UNDERGROUND CABLE
  - OH LV - LOW VOLTAGE OVERHEAD CABLE
  - UG LV - LOW VOLTAGE UNDERGROUND CABLE
  - SWM - WATER MAIN
  - SWF - FOUL WATER SEWER
  - SWC - COMBINED SEWER OUTFALL
  - SWS - SURFACE WATER SEWER
  - ASWM - ABANDONED WATER MAIN

P01	S2	04-11-15	FIRST ISSUE	AC	RG
REV	SUIT	DATE	DESCRIPTION	BY	APP

**ch2m FAIRHURST**  
 CH2M HILL Fairhurst JV  
 C/O: City Park 368 Alexandra Parade Glasgow G31 3AU  
 Tel +44 (0)141 552 2000 Fax +44 (0)141 552 2525

**TRANSPORT SCOTLAND**  
 COMMERCIAL A&A

**A9 DUALLING**  
 PERTH TO INVERNESS  
 Crubermore to Kinraig

**PROJECT 09**  
**CRUBENMORE TO KINCRAG**  
**NEWTONMORE JUNCTION**  
**OPTION 7**

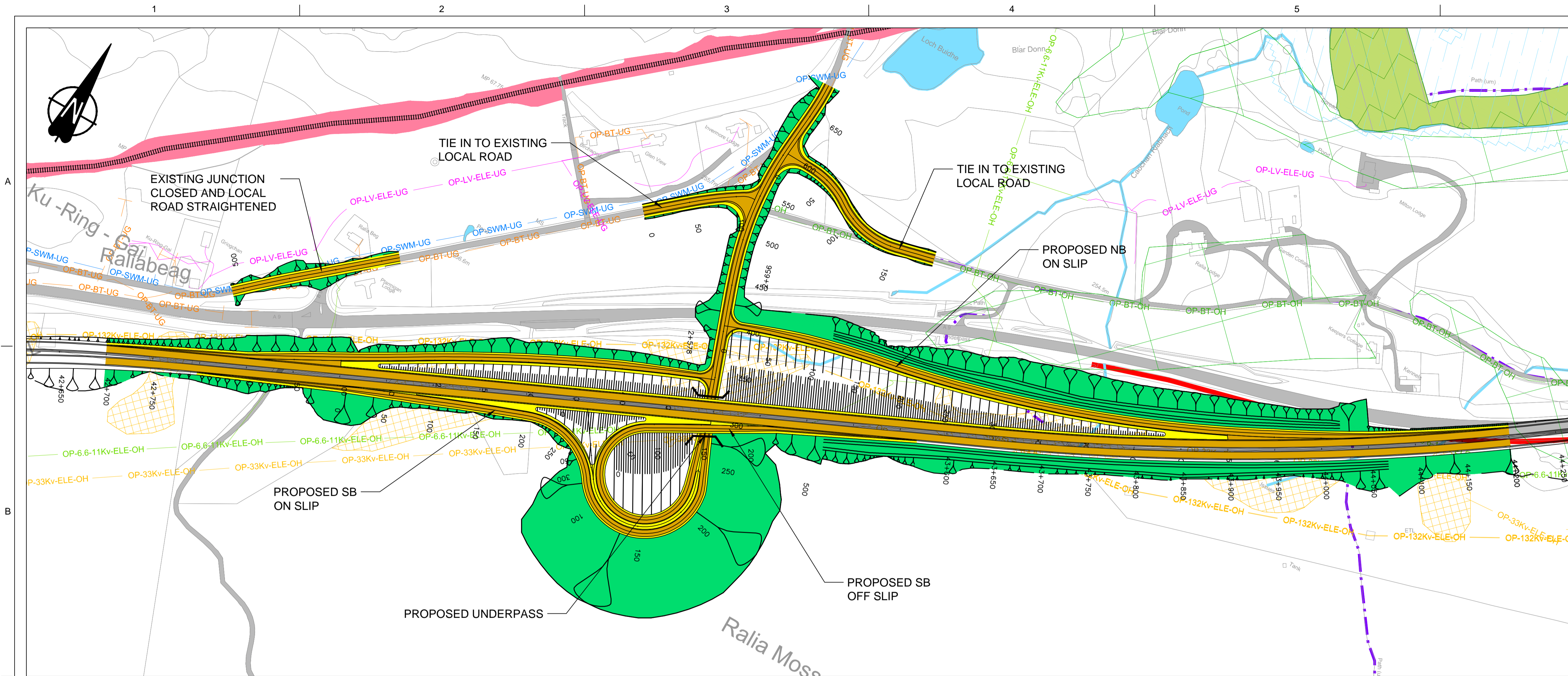
DESIGN:	DRAWN:	CHK:	APP:
A Campbell	A Campbell	B Okunfolami	R Gray

**1:2500 at A1**

DATE: 04/11/15  
 PROJ: 495298  
 DWG: A9P09-CFJ-HSR-F\_JCNM4\_JC-SK-RD-0001  
 SHEET: 1 of 1 REVISION: P01 SUITABILITY: S2

Reproduced by permission of Ordnance Survey on behalf of Her Majesty's Stationery Office, © Crown copyright and database right 2015. All rights reserved. Ordnance Survey Licence Number: 100046668.

A9P09-CFJ-HSR-F\_JCNM4\_JC-SK-RD-0001.dwg



**GENERAL NOTES**

1. ALL DIMENSIONS IN METRES UNLESS STATED OTHERWISE.
2. THIS PRELIMINARY DESIGN INDICATES EARTHWORK SLOPES AT 1 IN 4.
3. DESIGN INTERFACED TO DRAFT TOPOGRAPHICAL INFORMATION RECEIVED FROM BLOM.

**LEGEND:**

- HYDROLOGY**
- RIVER / STREAM / LOCHS
  - SEPA FLOOD MAPPING (1:200 YEAR)
- INFRASTRUCTURE**
- BEAULTY TO DENNY PYLONS
  - RAIL
  - EXISTING ROADS
  - NMU FACILITIES (PEDESTRIAN, CYCLIST AND EQUESTRIAN ROUTES)
  - NATURAL EARTHWORKS SLOPE
  - VARIABLE EARTHWORKS
  - CARRIAGEWAY
  - CENTRAL RESERVE / VERGE

- KEY ENVIRONMENTAL CONSTRAINTS**
- ANCIENT WOODLANDS (INVENTORY)
  - BATTLEFIELD SITES
  - BIOLOGICAL SSSI
  - CAIRNGORMS NATIONAL PARK (BOUNDARY)
  - CONSERVATION AREAS
  - GEOLOGICAL CONSERVATION REVIEW SITES
  - GEOLOGICAL SSSI
  - HISTORIC GARDENS AND DESIGNED LANDSCAPES
  - LISTED BUILDINGS
  - MIXED SSSI
  - NATIONAL NATURE RESERVES
  - NATIONAL SCENIC AREAS
  - RAMSAR SITE
  - SAC (SPECIAL AREA OF CONSERVATION)
  - SCHEDULED MONUMENTS
  - SPA (SPECIAL PROTECTION AREA)
  - PEAT AREAS
  - ROCK CUTTING

- EXISTING SERVICES**
- OBT OVERHEAD CABLE
  - UBT UNDERGROUND CABLE
  - OH HV HIGH VOLTAGE OVERHEAD CABLE
  - UG HV HIGH VOLTAGE UNDERGROUND CABLE
  - OH LV LOW VOLTAGE OVERHEAD CABLE
  - UG LV LOW VOLTAGE UNDERGROUND CABLE
  - SWM WATER MAIN
  - SWF FOUL WATER SEWER
  - SWC COMBINED SEWER OUTFALL
  - SWS SURFACE WATER SEWER
  - ASWM ABANDONED WATER MAIN

REV	SUIT	DATE	DESCRIPTION	BY	APP
P01	S2	04-11-15	FIRST ISSUE	AC	RG

**ch2m FAIRHURST**  
 CH2M HILL Fairhurst JV  
 C/O: City Park 368 Alexandra Parade Glasgow G31 3AU  
 Tel +44 (0)141 552 2000 Fax +44 (0)141 552 2525

**TRANSPORT SCOTLAND**  
 COMMERCIAL A&A

**A9 DUALLING**  
 PERTH TO INVERNESS  
 Crubennore to Kincaig

**PROJECT 09  
 CRUBENMORE TO KINCAIG  
 NEWTONMORE JUNCTION  
 OPTION 4**

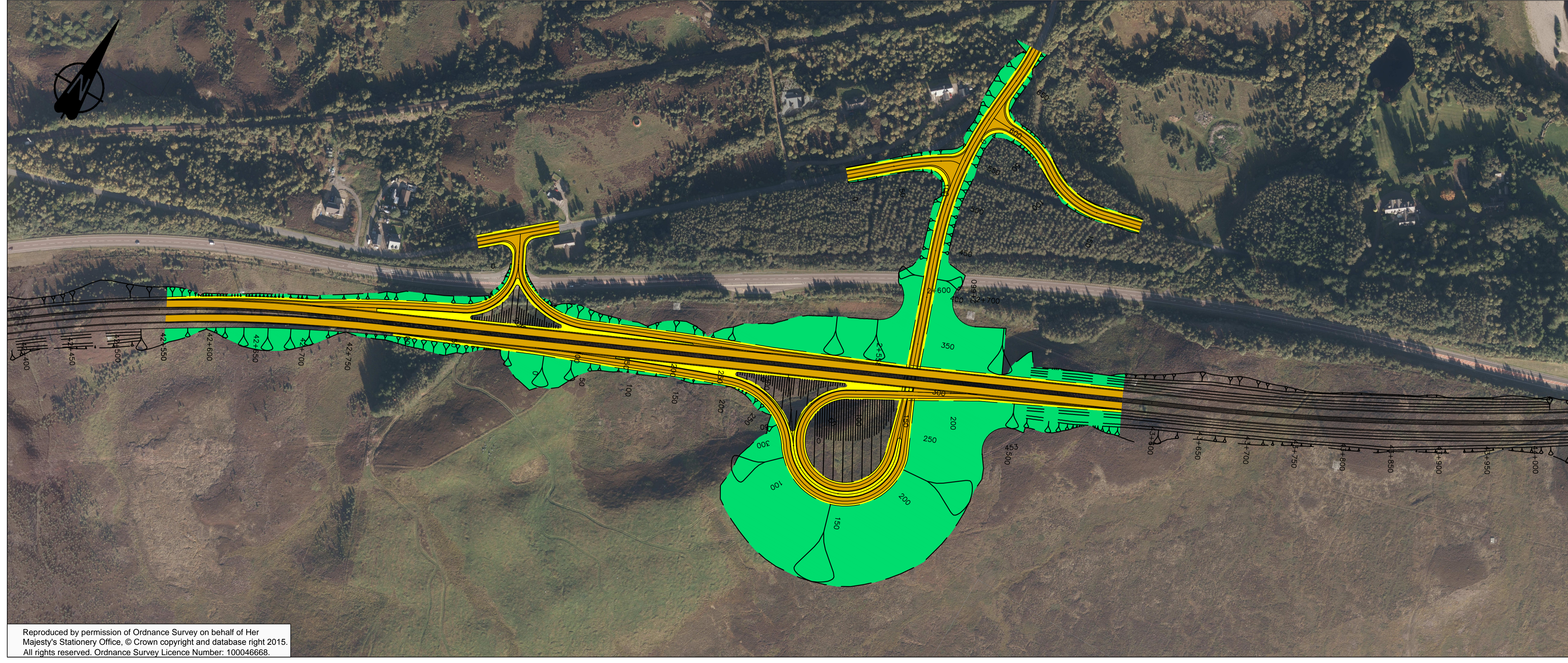
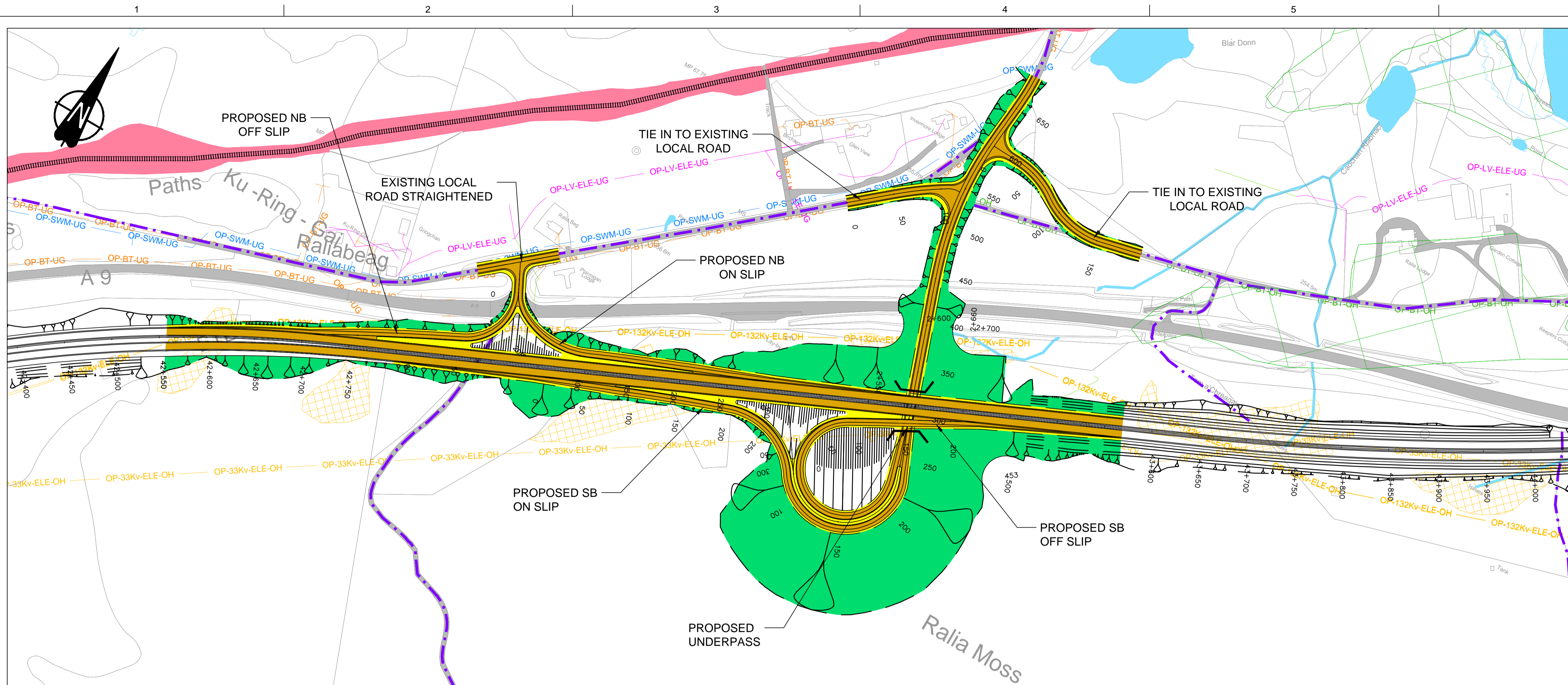
DESIGN:	DRAWN:	CHK:	APP:
A Campbell	R Young	B Okunfolami	R Gray

**1:2500 at A1**

DATE: 04/11/15  
 PROJ: 495298  
 DWG: A9P09-CFJ-HSR-J\_JCNM4\_JC-SK-RD-0002  
 SHEET: 1 of 1 REVISION: P01 SUITABILITY: S2

Reproduced by permission of Ordnance Survey on behalf of Her Majesty's Stationery Office, © Crown copyright and database right 2015. All rights reserved. Ordnance Survey Licence Number: 100046668.

A9P09-CFJ-HSR-J\_JCNM4\_JC-SK-RD-0002.dwg



**GENERAL NOTES**

1. ALL DIMENSIONS IN METRES UNLESS STATED OTHERWISE.
2. THIS PRELIMINARY DESIGN INDICATES EARTHWORK SLOPES AT 1 IN 4.
3. DESIGN INTERFACED TO DRAFT TOPOGRAPHICAL INFORMATION RECEIVED FROM BLOM.

**LEGEND:**

- HYDROLOGY**
- RIVER / STREAM / LOCHS
  - SEPA FLOOD MAPPING (1:200 YEAR)

**INFRASTRUCTURE**

- BEAULTY TO DENNY PYLONS
- RAIL
- EXISTING ROADS
- NMU FACILITIES (PEDESTRIAN, CYCLIST AND EQUESTRIAN ROUTES)
- NATURAL EARTHWORKS SLOPE
- VARIABLE EARTHWORKS
- CARRIAGEWAY
- CENTRAL RESERVE / VERGE

**KEY ENVIRONMENTAL CONSTRAINTS**

- ANCIENT WOODLANDS (INVENTORY)
- BATTLEFIELD SITES
- BIOLOGICAL SSSI
- CAIRNGORMS NATIONAL PARK (BOUNDARY)
- CONSERVATION AREAS
- GEOLOGICAL CONSERVATION REVIEW SITES
- GEOLOGICAL SSSI
- HISTORIC GARDENS AND DESIGNED LANDSCAPES
- LISTED BUILDINGS
- MIXED SSSI
- NATIONAL NATURE RESERVES
- NATIONAL SCENIC AREAS
- RAMSAR SITE
- SAC (SPECIAL AREA OF CONSERVATION)
- SCHEDULED MONUMENTS
- SPA (SPECIAL PROTECTION AREA)
- PEAT AREAS
- ROCK CUTTING

**EXISTING SERVICES**

- OBT OVERHEAD CABLE
- UBT UNDERGROUND CABLE
- OH HV HIGH VOLTAGE OVERHEAD CABLE
- UG HV HIGH VOLTAGE UNDERGROUND CABLE
- OH LV LOW VOLTAGE OVERHEAD CABLE
- UG LV LOW VOLTAGE UNDERGROUND CABLE
- SWM WATER MAIN
- SWF FOUL WATER SEWER
- SWC COMBINED SEWER OUTFALL
- SWS SURFACE WATER SEWER
- ASWM ABANDONED WATER MAIN


P01	S2	04-11-15	FIRST ISSUE	AC	RG
REV	SUIT	DATE	DESCRIPTION	BY	APP

**ch2m FAIRHURST**  
 CH2M HILL Fairhurst JV  
 C/O: City Park 368 Alexandra Parade Glasgow G31 3AU  
 Tel +44 (0)141 552 2000 Fax +44 (0)141 552 2525

**TRANSPORT SCOTLAND**  
**A9 DUALLING**  
 PERTH TO INVERNESS  
 Crubennore to Kincaig

**PROJECT 09**  
**CRUBENMORE TO KINCAIG**  
**NEWTONMORE JUNCTION**  
**OPTION 9**

DESIGN:	DRAWN:	CHK:	APP:
A Campbell	A Campbell	B Okunfolami	R Gray

**1:2500 at A1**

DATE:	04/11/15
PROJ:	495298
DWG:	A9P09-CFJ-HSR-J_JCNM9_JC-SK-RD-0002
SHEET:	1 of 1
REVISION:	P01
SUITABILITY:	S2

Reproduced by permission of Ordnance Survey on behalf of Her Majesty's Stationery Office, © Crown copyright and database right 2015. All rights reserved. Ordnance Survey Licence Number: 100046668.

A9P09-CFJ-HSR-J\_JCNM9\_JC-SK-RD-0002.dwg