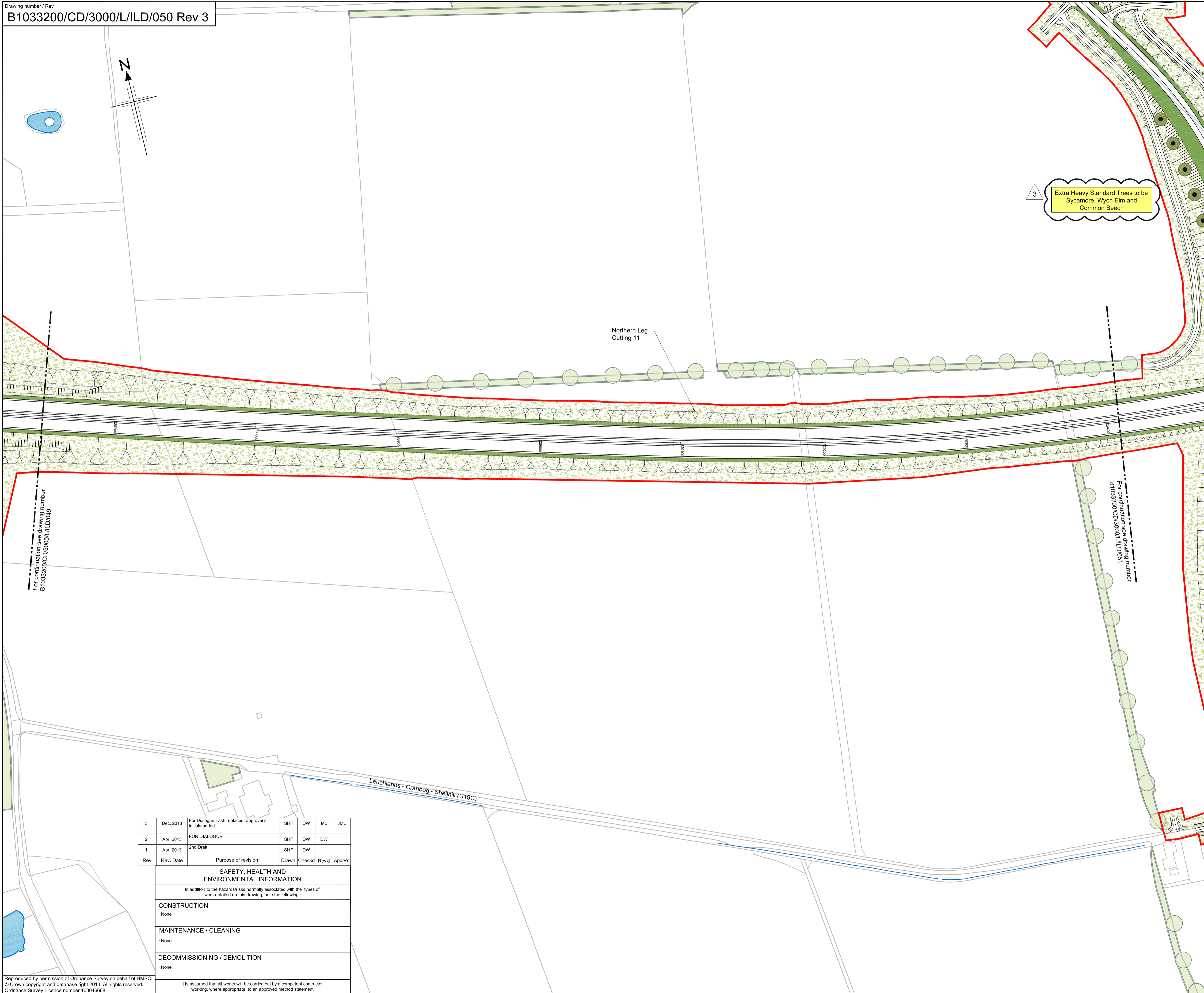


File: I:\Gla27497\graphics\ENVIRONMENTAL\B1033200_F_AWIPR_07\Indicative Landscape Design (2012)\Working\Indicative Landscape Design_FOR DIALOGUE (Rev 3).dwg Date: Dec 18, 2013 - 11:45am Plotted by: fentons



- Legend**
- Existing Vegetation (outside LMA)
 - Existing Vegetation to be Retained (inside LMA)
 - Existing Watercourses & Water Bodies
 - Existing Drystone Walls to be retained
 - LMA Boundary
 - Treatment Ponds
 - General Purpose Grass
 - Species Rich Grassland
 - Grassland potentially to be returned to Agriculture (see notes)
 - Broadleaved Woodland (BW)
 - Coniferous Woodland (CW)
 - Mixed Woodland (MW)
 - Riparian Woodland (RW)
 - Scrub Woodland (SW)
 - Feathered Trees
 - Standard Trees
 - Extra Heavy Standard Trees / Specimen Trees
 - Ivy Planting (groups of 10) at noise barriers (see notes)
 - Hedgerow (H)
 - Advanced Ecological Habitat Creation Area
- * See Drawing Nos. B1033200/CD/3000/L/ILD/072 and 073 for Planting Schedules and Notes.

Rev	Rev. Date	Purpose of revision	Drawn	Checked	Rev'd	Apprv'd
3	Dec. 2013	For Dialogue - ash replaced, approver's initials added.	SHF	DW	ML	JML
2	Apr. 2013	FOR DIALOGUE	SHF	DW	DW	
1	Apr. 2013	2nd Draft	SHF	DW		

SAFETY, HEALTH AND ENVIRONMENTAL INFORMATION	
In addition to the hazards/risks normally associated with the types of work detailed on this drawing, note the following:	
CONSTRUCTION	- None
MAINTENANCE / CLEANING	- None
DECOMMISSIONING / DEMOLITION	- None

Reproduced by permission of Ordnance Survey on behalf of HMSO.
 © Crown copyright and database right 2013. All rights reserved.
 Ordnance Survey Licence number 100046668.

It is assumed that all works will be carried out by a competent contractor working, where appropriate, to an approved method statement

JACOBS
 95 Bothwell St, Glasgow, G2 7HX
 Tel: +44(0)141 243 8300 Fax: +44(0)141 226 3109
 www.jacobs.com

Aberdeen Western Peripheral Route
 Balmedie-Tipperty

Drawing title
INDICATIVE LANDSCAPE DESIGN SHEET 50 OF 71

Drawing status
FOR DIALOGUE

Scale	1:1,250 @ A1	DO NOT SCALE
Jacobs No.	B1033200	
Drawing number	B1033200/CD/3000/L/ILD/050	Rev 3

This drawing is not to be used in whole or part other than for the intended purpose and project as defined on this drawing. Refer to the contract for full terms and conditions.