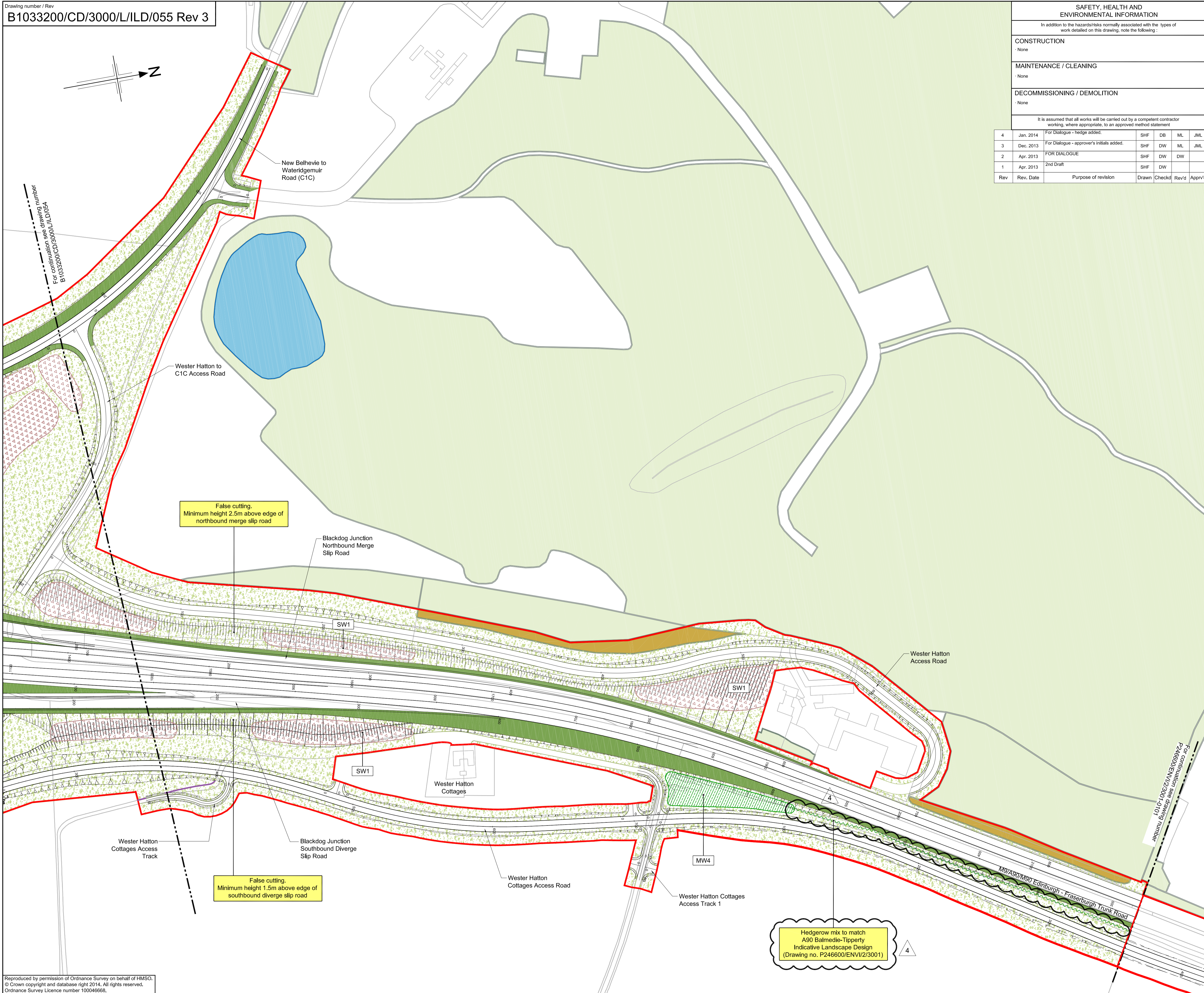


SAFETY, HEALTH AND ENVIRONMENTAL INFORMATION						
In addition to the hazards/risks normally associated with the types of work detailed on this drawing, note the following:						
<b>CONSTRUCTION</b>						
· None						
<b>MAINTENANCE / CLEANING</b>						
· None						
<b>DECOMMISSIONING / DEMOLITION</b>						
· None						
It is assumed that all works will be carried out by a competent contractor working, where appropriate, to an approved method statement						
4	Jan. 2014	For Dialogue - hedge added.	SHF	DB	ML	JML
3	Dec. 2013	For Dialogue - approver's initials added.	SHF	DW	ML	JML
2	Apr. 2013	FOR DIALOGUE	SHF	DW	DW	
1	Apr. 2013	2nd Draft	SHF	DW		
Rev	Rev. Date	Purpose of revision	Drawn	Checked	Rev'd	Appr'd



**Legend**

- Existing Vegetation (outside LMA)
- Existing Vegetation to be Retained (inside LMA)
- Existing Watercourses & Water Bodies
- Existing Drystone Walls to be retained
- LMA Boundary
- Treatment Ponds
- General Purpose Grass
- Species Rich Grassland
- Grassland potentially to be returned to Agriculture (see notes)
- Broadleaved Woodland (BW)
- Coniferous Woodland (CW)
- Mixed Woodland (MW)
- Riparian Woodland (RW)
- Scrub Woodland (SW)
- Feathered Trees
- Standard Trees
- Extra Heavy Standard Trees / Specimen Trees
- Ivy Planting (groups of 10) at noise barriers (see notes)
- Hedgerow (H)
- Advanced Ecological Habitat Creation Area

\* See Drawing Nos. B1033200/CD/3000/L/ILD/072 and 073 for Planting Schedules and Notes.

**JACOBS**  
 95 Bothwell St, Glasgow, G2 7HX  
 Tel: +44(0)141 243 8300 Fax: +44(0)141 226 3109  
 www.jacobs.com

**Aberdeen Western Peripheral Route**  
 Balmedie-Tipperty

Drawing title  
**INDICATIVE LANDSCAPE DESIGN SHEET 55 OF 71**

Drawing status  
**FOR DIALOGUE**

Scale  
 1:1,250 @ A1 **DO NOT SCALE**

Jacobs No.  
 B1033200

Drawing number  
**B1033200/CD/3000/L/ILD/055**

Rev  
**4**

This drawing is not to be used in whole or part other than for the intended purpose and project as defined on this drawing. Refer to the contract for full terms and conditions.

File: \\Gla27497\graphics\ENVIRONMENTAL\B1033200\_F\_AWPR\_07\Indicative Landscape Design (2012)\Working\Indicative Landscape Design\_FOR DIALOGUE (Rev.3).dwg Date: Jan 27, 2014 - 1:56pm Plotted by: lenions

Reproduced by permission of Ordnance Survey on behalf of HMSO.  
 © Crown copyright and database right 2014. All rights reserved.  
 Ordnance Survey Licence number 100046668.

Hedgerow mix to match  
 A90 Balmedie-Tipperty  
 Indicative Landscape Design  
 (Drawing no. P246600/ENV1/2/3001)