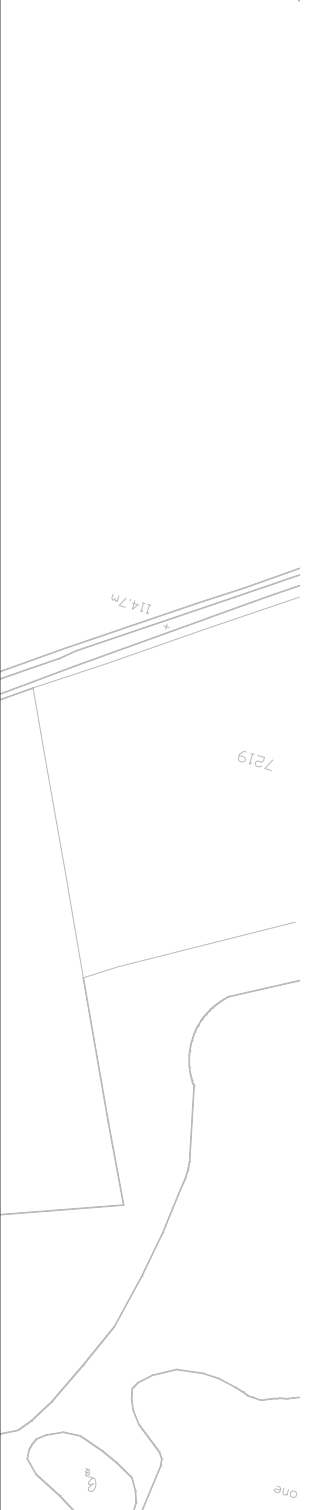


Reproduced by permission of Ordnance Survey on behalf of HMSO.
 © Crown copyright and database right 2013. All rights reserved.
 Ordnance Survey Licence number: 100045555

Readacted



SAFETY, HEALTH AND ENVIRONMENTAL INFORMATION
In addition to the responsibilities normally associated with the types of work detailed on this drawing, note the following:
CONSTRUCTION
None
MAINTENANCE / CLEANING
None
DECOMMISSIONING / DEMOLITION
None

EXISTING PUBLIC AND PRIVATE UNDERTAKERS SHEET 3 OF 71

FOR DIALOGUE DO NOT SCALE

Scale: 1:1,250 @ A1
 Jacobs No: B1033200
 Drawing number: **B1033200/CD/2700/EX/003**
 Rev: **1**

This drawing is not to be used in whole or part other than for the intended purpose and project as defined on this drawing. Refer to the contract for full terms and conditions.

Aberdeen Western Peripheral Route
 Balmedie-Tipperty

JACOBS
 95 Bonwell St, Glasgow, G2 7JX
 Tel: +44(0)141 243 2000 Fax: +44(0)141 228 3100
 www.jacobs.com

Rev	Rev. Date	Rev. By	Rev. For	Rev. Description
1	06/06/13	BA	CRB	JAK
0	14/06/13	BA	CRB	JAK

- Notes:
- The locations of private and publicly owned services and supply apparatus identified as existing as shown on this drawing are purely indicative and no guarantee is given to the completeness or accuracy of this information.
 - Prior to carrying out work in any part of the site, the Contractor shall be responsible for locating all existing services and supply apparatus, and agreeing the details of any required diversion and protection measures with the relevant Company or Landowner.
 - For Public and Private Undertakers Legend refer to Drawing B1033200-CD-2700-LG01.
 - For Specimen Design Mainline, Junctions & Side Roads Plan & Profiles refer to B1033200/SD/1000001 to B1033200/SD/1000032 and B1033200/SD/1010001 to B1033200/SD/1010017.
 - For Designer's Risk Assessment refer to B1033200/DR/42700/001.
 - For Fencing Specimen Design refer to B1033200/SD/0300 series.
 - For Road Restraint Systems Specimen Design refer to B1033200/SD/0400 series.
 - For Drainage Specimen Design refer to B1033200/SD/0500 series.
 - For Geotechnical Specimen Design refer to B1033200/SD/0600 series.
 - For Kerbs, Footways and Paved Areas Specimen Design refer to B1033200/SD/1100 series.
 - For Traffic Sign Faces Specimen Design refer to B1033200/SD/1210 series.
 - For Road Marking Specimen Design refer to B1033200/SD/1200 series.
 - For Lighting Specimen Design refer to B1033200/SD/1300 series.
 - For ITS Specimen Design refer to B1033200/SD/1500 series.
 - For Structures Specimen Design refer to B1033200/SD/ST series.
 - For Indicative Landscape Design refer to B1033200/CD/3000 series.
 - For Key Plan refer to B1033200/CD/2700/KP1.