

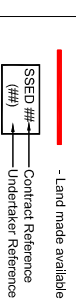
# Redacted



Notes:

- The locations of private and publicly owned service and supply apparatus identified as existing, proposed, abandoned or temporary shall be shown on this drawing. The party indicating and information only and no guarantee is given to the completeness or accuracy of this information.
- Prior to carrying out work in any part of the site, the Contractor shall be responsible for locating all existing service and supply apparatus, and agreeing the details of any required diversion and protection measures with the relevant Company or Landowner.
- For details of existing undertaker apparatus refer to drawing series B1033200/CD/2700/EX/##.

Legend:



Existing Apparatus:

- OH 33 — - 33kV Overhead Line
- UG 33 — - 33kV Underground Cable
- OH 11 — - 11kV Overhead Line
- UG 11 — - 11kV Underground Cable
- OH 415 — - 415V Overhead Line
- UG 415 — - 415V Underground Cable
- — Underground Cable Joint / Box
- — Overhead Line Pole / Switch / Transformer

Proposed Apparatus:

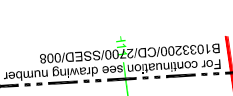
- P-OH33 — - 33kV Overhead Line
- P-UG33 — - 33kV Underground Cable
- P-OH11 — - 11kV Overhead Line
- P-UG11 — - 11kV Underground Cable
- P-OH415 — - 415V Overhead Line
- P-UG415 — - 415V Underground Cable

Abandoned Apparatus:

- A-OH33 — - 33kV Overhead Line
- A-UG33 — - 33kV Underground Cable
- A-OH11 — - 11kV Overhead Line
- A-UG11 — - 11kV Underground Cable
- A-OH415 — - 415V Overhead Line
- A-UG415 — - 415V Underground Cable

Temporary Apparatus:

- T-OH33 — - 33kV Overhead Line
- T-UG33 — - 33kV Underground Cable
- T-OH11 — - 11kV Overhead Line
- T-UG11 — - 11kV Underground Cable
- T-OH415 — - 415V Overhead Line
- T-UG415 — - 415V Underground Cable



Rev.	Rev. Date	BA	CR	BM	JAK
1	30/06/13				
0	14/06/13				

**JACOBS**  
 95 Bowling St, Glasgow, G2 7JX  
 Tel: +44(0)141 243 3000 Fax: +44(0)141 228 3100  
 www.jacobs.com

**Aberdeen Western Peripheral Route**  
 Balmudie-Tipperary

Drawing title  
**INDICATIVE DESIGN  
 SCOTTISH & SOUTHERN ENERGY  
 DISTRIBUTION  
 SHEET 7 OF 71**

Drawing status  
**FOR DIALOGUE**  
 DO NOT SCALE

Scale  
 1:1,250 @ A1

Jacobs No.  
 B1033200

Drawing number  
**B1033200/CD/2700/SSED/007**

Rev  
**1**

Reproduced by permission of Ordnance Survey on behalf of HMSO.  
 © Crown copyright and database right 2013. All rights reserved.  
 Ordnance Survey Licence number: 100035555