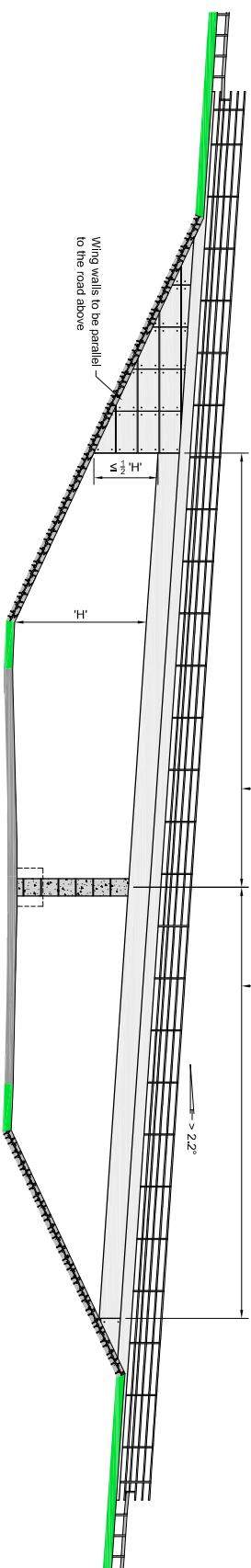
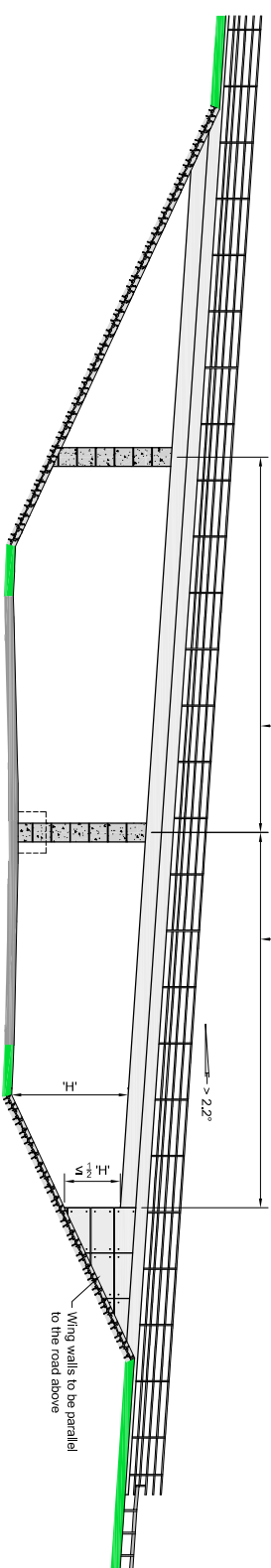




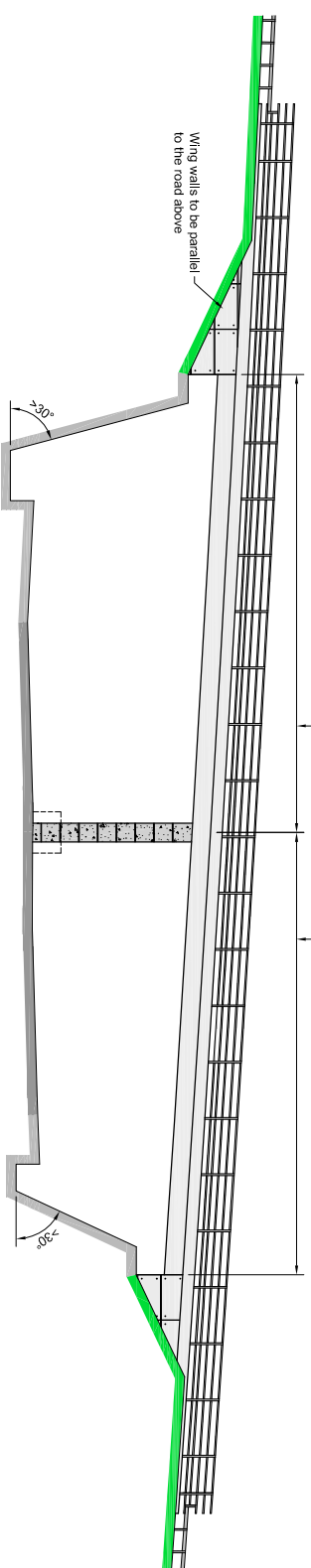
Single Span when Road Above has a Vertical Gradient $> 2.2^\circ$



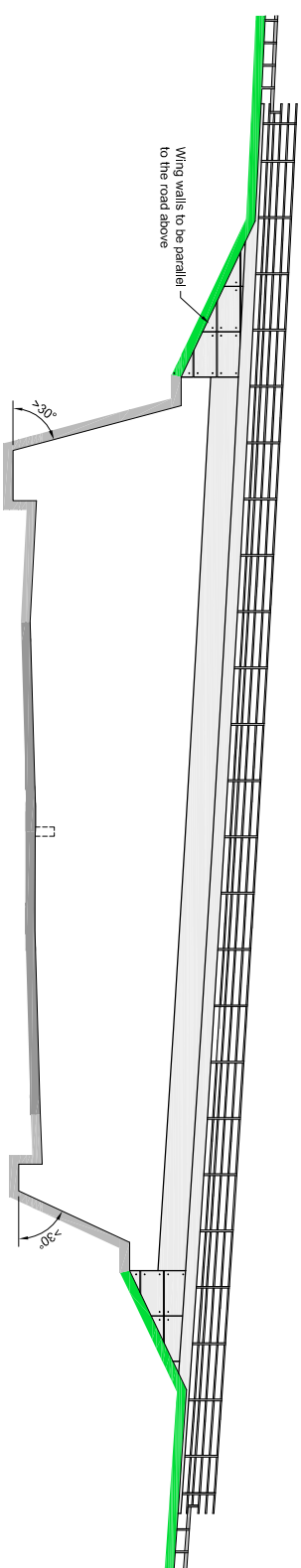
Two Span when Road Above has a Vertical Gradient $> 2.2^\circ$



Three Span when Road Above has a Vertical Gradient $> 2.2^\circ$



Two Span with No Greater Than Half Height Abutments in Cutting with Slopes $> 30^\circ$



Single Span with No Greater Than Half Height Abutments in Cutting with Slopes $> 30^\circ$

Notes :
 1. All dimensions are in millimetres unless noted otherwise.

| Rev | Rev. Date | First Issue | MM | CC | CC | DS |
|-----|------------|---------------------|----|----|----|----|
| 0 | April 2013 | Purpose of revision | | | | |

JACOBS
 60 Berrymills, Glasgow, G2 7HX
 Tel: +44(0)141 206 3100
 www.jacobs.com



**OVERBRIDGES
 ACCEPTABLE FORMS
 SHEET 2 OF 2**

| | | | |
|---------------|----------|----------------|------------------------|
| Drawing title | | FOR DIALOGUE | |
| Scale | | DO NOT SCALE | |
| Jacobs No. | B1033200 | Drawing number | B1033200/CD/DEF/ST/002 |
| Rev | 0 | Rev | 0 |

This drawing is not to be used in whole or part other than for the intended purpose and project as defined on this drawing. Refer to the contract for full terms and conditions.