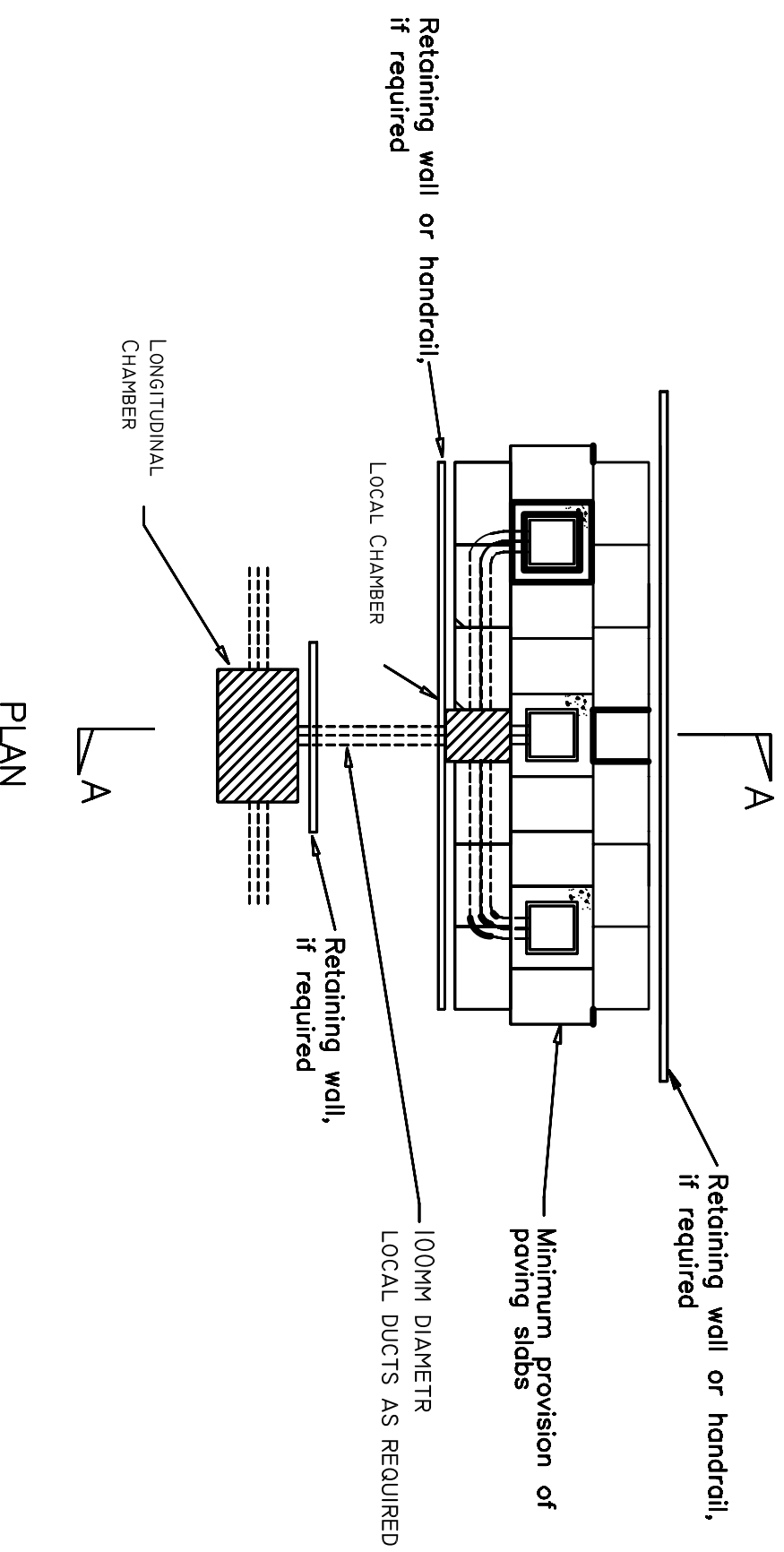
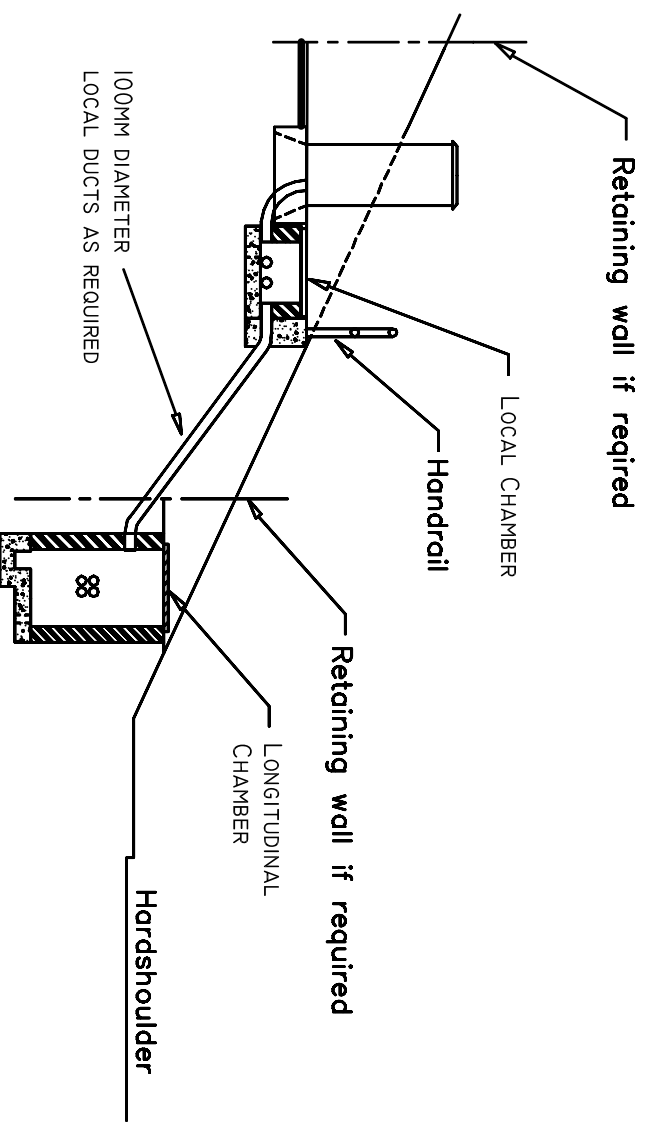


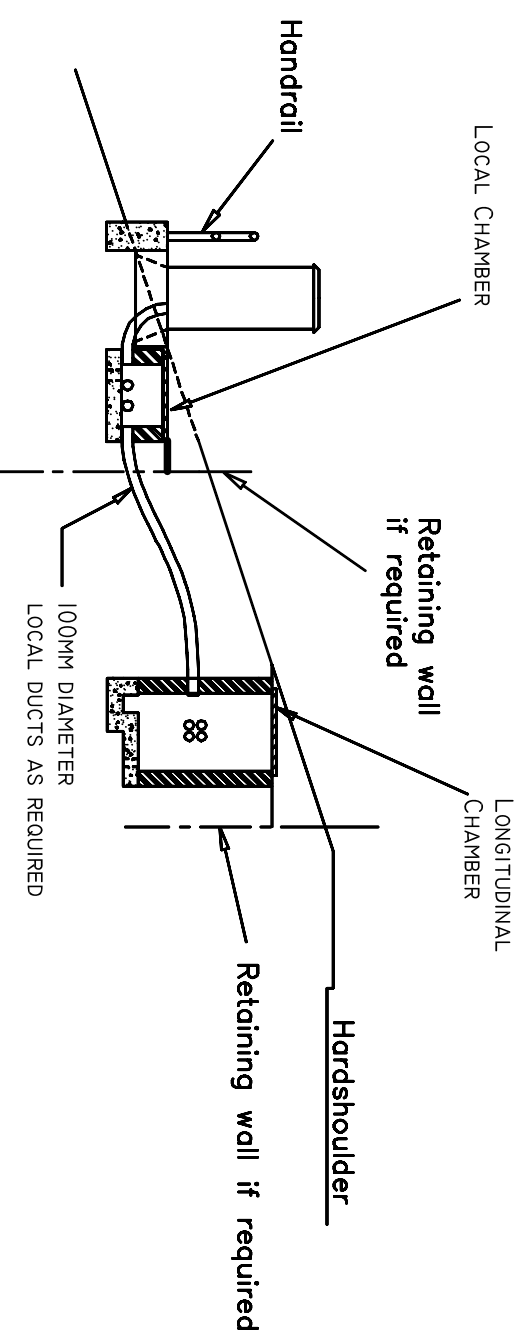
- NOTES**
1. THE ARRANGEMENTS SHOWN ARE TYPICAL ONLY
 2. FOR DETAILS OF STEPS AND HANDRAILS REFER TO NDX1070.
 3. THE ARRANGEMENT PLAN VIEW, DETAILS THE REQUIREMENTS AT A SITE WITH 3 CABINETS. AT SITES WHERE THERE IS A DIFFERENT NUMBER OF CABINETS THE DETAILS SHALL BE ADAPTED TO SUIT
 4. PAVING SLABS SHALL BE 900X600X50MM AND SHALL BE BEDDED ON 75MM TYPE 1 SUB-BASE.
 5. WHERE A RETAINING WALL IS REQUIRED A MINIMUM OF 750MM SHALL BE PROVIDED BETWEEN WALL AND EQUIPMENT.
 6. ADEQUATE GROUND AND SURFACE DRAINAGE SHALL BE PROVIDED AT THE SITE TO PREVENT WATER INGRESS INTO CHAMBERS AND CABINET FOUNDATIONS. ALL CHAMBER DRAINAGE ARRANGEMENTS SHALL FULLY ACCOMMODATE THE PARTICULAR GROUND CONDITIONS PREVAILING AT THE SITE.



PLAN



SECTION A - A (CUTTING)



SECTION A - A (EMBANKMENT)



SCOTTISH EXECUTIVE

Traffic Control Unit
EDINBURGH, EH8 6QA

NADICS
www.nadics.org.uk

This drawing was generated on computer and must not be manually updated

TITLE
TYPICAL TYPE 600 CABINET INSTALLATION

ORIGINAL DRAWING SIZE: 297 x 420
ALL DIMENSIONS ARE IN MM
TOLERANCE ± 1 UNLESS OTHERWISE STATED
THIRD ANGLE PROJECTION DO NOT SCALE

ISSUE	AMENDMENTS	APPD/DATE
DRN C.S.G.	CHKD B.D.	SCALE
DATE 25.09.01	DATE 29.09.01	N.T.S.
DRG. NO. NDX1002-00ga		SHT. NO. 8 of 17
B	VARIOUS - SEE REVISION SHEET	CF 5/2/06
A	FOR CONSTRUCTION	BD 04/02/02