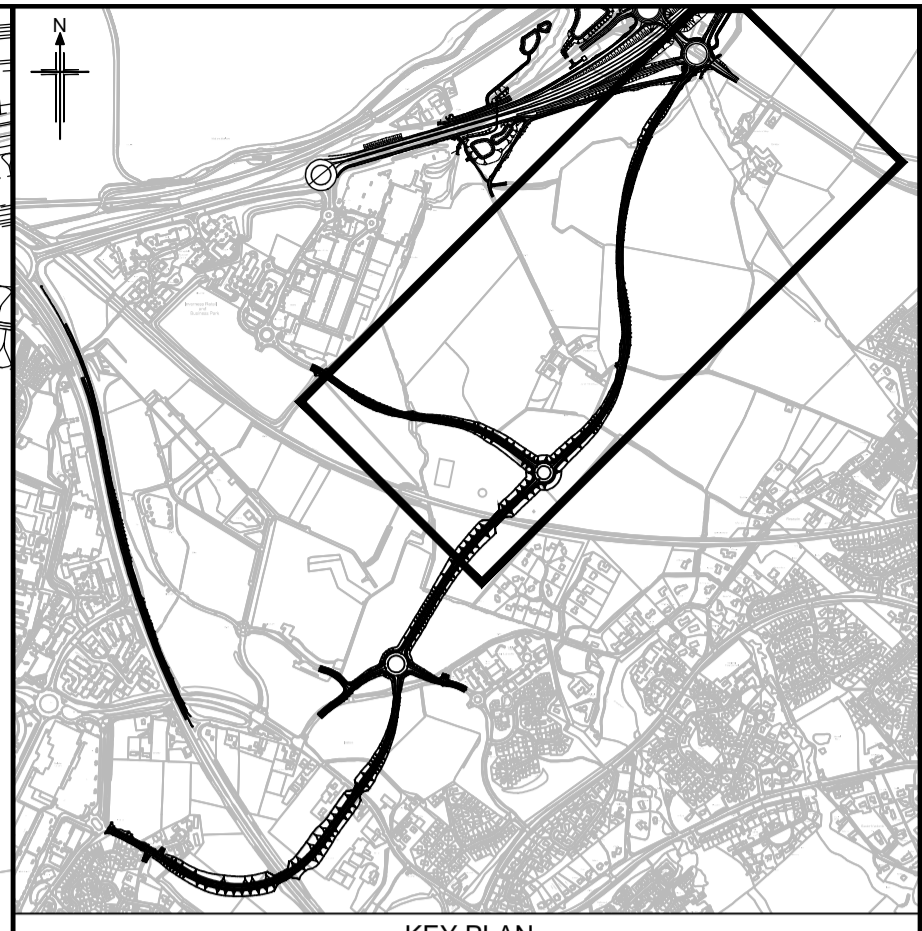


Reproduced by permission of Ordnance Survey on behalf of HMSO.
 © Crown copyright and database right 2017. All rights reserved.
 Ordnance Survey Licence number 100046668.

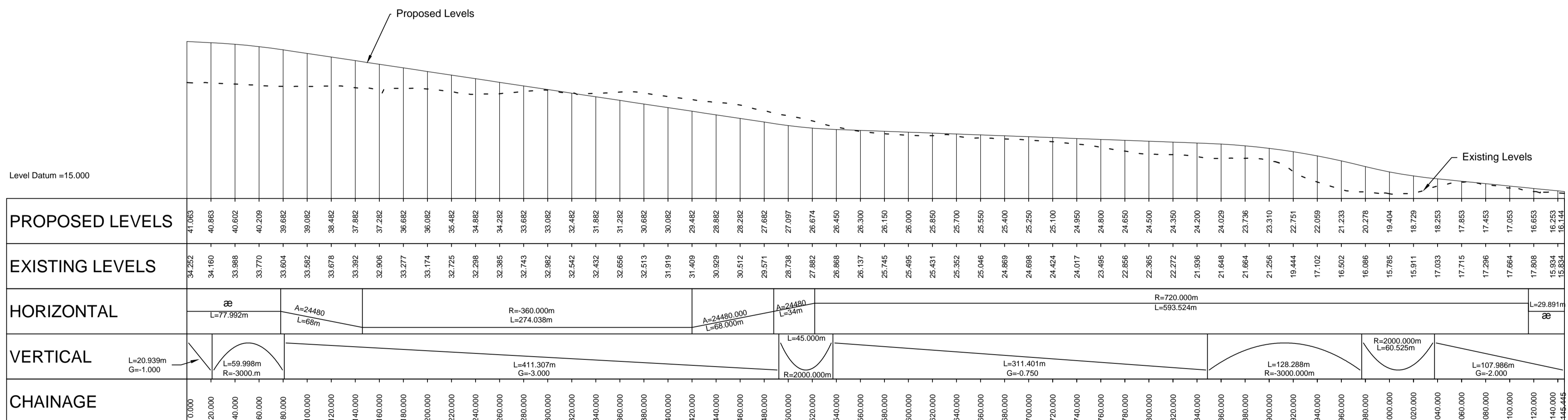


KEY PLAN

- Notes
- All dimensions are in metres unless stated otherwise
 - The design shown is one option forming part of a DMRB Stage 2 option assessment process and will be subject to DMRB Stage 3 development.

Key:
 - Structure

OS Mastermap was obtained in November 2015 and is for illustration purposes only.



ASHTON FARM ROUNDABOUT TO A96 SMITHTON JUNCTION
 LONGITUDINAL SECTION (0 TO 1145)



0	Oct 17	DMRB Stage 2 Report	AT	AR	GT	EHG
Rev	Rev. Date	Purpose of revision	Drawn	Checked	Rev'd	Apprv'd

JACOBS
 95 Bothwell St, Glasgow, G2 7HX
 Tel: +44(0)141 243 8000 Fax: +44(0)141 226 3109
 www.jacobs.com



Project
A9/A96 INSHES TO SMITHTON

Drawing title
**DMRB STAGE 2
 SCHEME ASSESSMENT REPORT
 OPTION 1B
 PLAN AND PROFILE
 SHEET 3 OF 5**

Drawing status
PRELIMINARY

Scale
 As Shown @ A1 **DO NOT SCALE**

Jacobs No.
B2103501

Drawing number
B2103501-HW-1200-DR-003

Rev
0

This drawing is not to be used in whole or part other than for the intended purpose and project as defined on this drawing. Refer to the contract for full terms and conditions.