

Figure 12.4a



**Legend**

- Route Options 500m Study Area
- Proposed A96 Dualling Inverness to Nairn (including Nairn Bypass)
- Route Option 1A
- Route Option 1B\*
- Target Notes
- Scattered broadleaved trees
- Scattered scrub
- Amenity grassland
- Semi-natural Broadleaved Woodland
- Broadleaved Plantation Woodland
- Semi-natural Coniferous Woodland
- Coniferous Plantation Woodland
- Dense/Continuous Shrub
- Improved Grassland
- Poor Semi-improved Grassland
- Other Tall Herb and Fern - Ruderal
- Standing water
- Arable Land
- Bare ground
- Other habitat

\* For this route, only the variation to Option 1A has been shown. Where no variation is shown, Option 1B is as Option 1A.

Rev.	Date	Purpose of revision	Orig/Dwn	Checkd	Rev'd	Apprv'd
0	OCT 2017	Final	KR	JF	PG	GT

**JACOBS**  
95 Bothwell Street, Glasgow, G2 7HX, UK.  
Tel: +44(0)141 243 8000  
www.jacobs.com



Client  
**A9/A96 Inshes to Smithton**

Project  
**DMRB Stage 2  
Phase 1 Habitat Survey Results  
Route Options 1A & 1B**

Drawing title  
**Figure 12.4a**

Drawing Status: **FINAL**  
Scale: **@ A3 DO NOT SCALE**

Jacobs No. **B2103501**  
Drawing number **Figure 12.4a** Rev **0**

This drawing is not to be used in whole or part other than for the intended purpose and project as defined on this drawing. Refer to the contract for full terms and conditions.

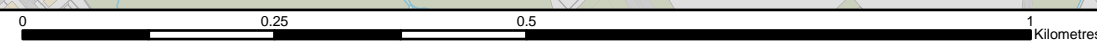
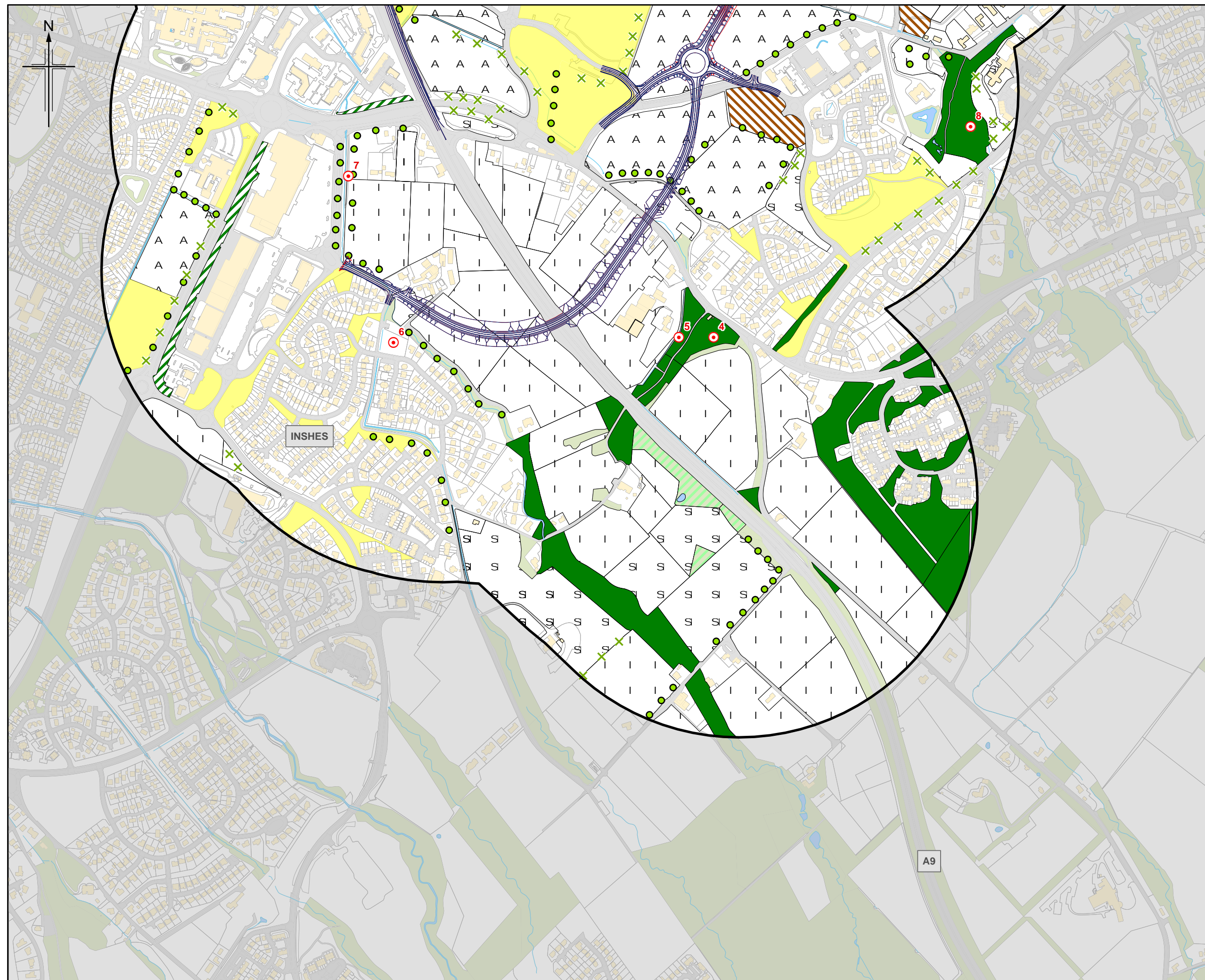
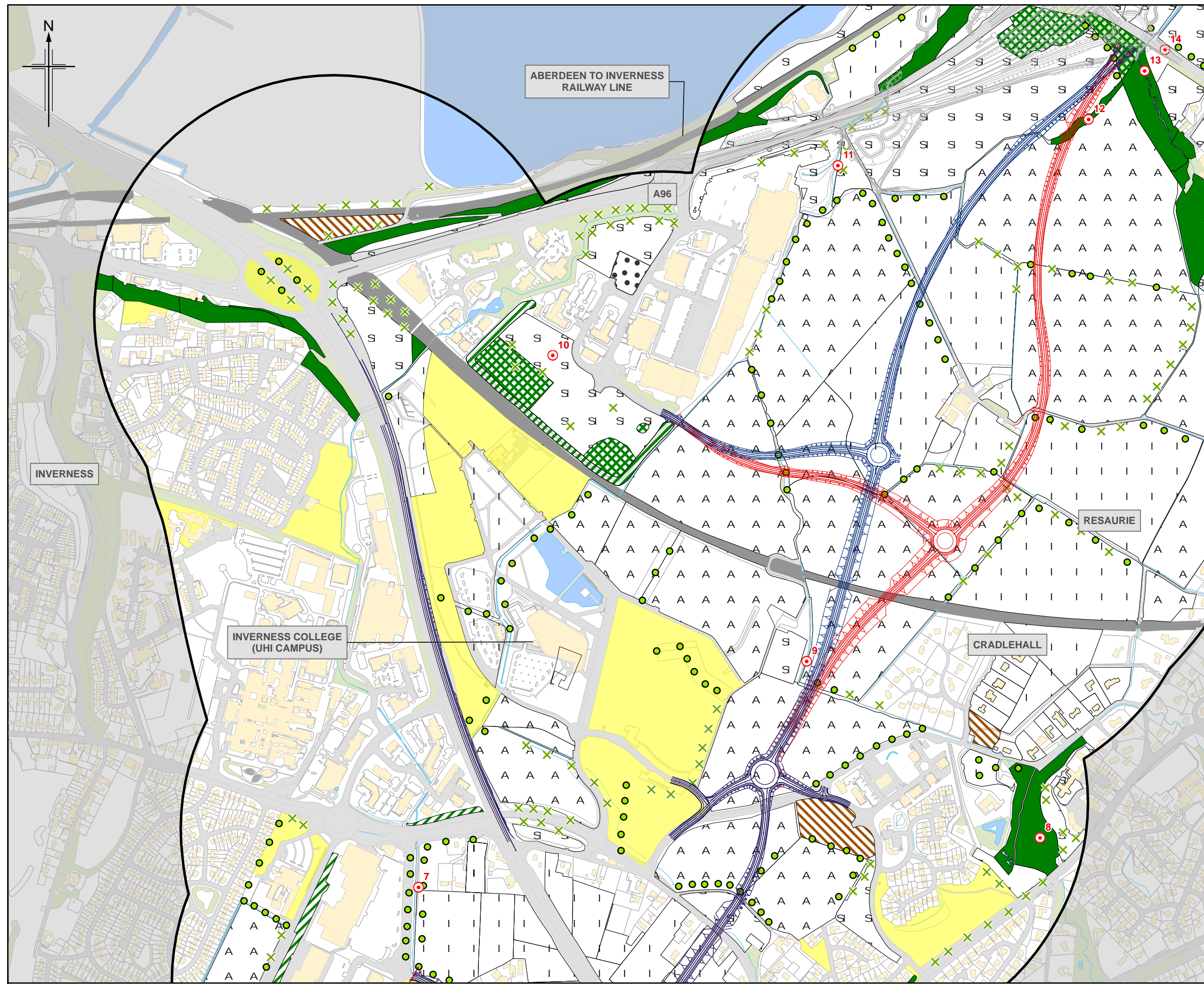




Figure 12.4b



**Legend**

- Route Options 500m Study Area
- Proposed A96 Dualling Inverness to Nairn (including Nairn Bypass)
- Route Option 1A
- Route Option 1B\*
- Target Notes
- Scattered broadleaved trees
- Scattered scrub
- Amenity grassland
- Semi-natural Broadleaved Woodland
- Broadleaved Plantation Woodland
- Semi-natural Coniferous Woodland
- Coniferous Plantation Woodland
- Dense/Continuous Shrub
- Improved Grassland
- Poor Semi-improved Grassland
- Other Tall Herb and Fern - Ruderal
- Standing water
- Arable Land
- Bare ground
- Other habitat

\* For this route, only the variation to Option 1A has been shown. Where no variation is shown, Option 1B is as Option 1A.

0	OCT 2017	Final	KR	JF	PG	GT
Rev.	Rev. Date	Purpose of revision	Orig/Dwn	Checkd	Rev'd	Apprv'd

**JACOBS**  
95 Bothwell Street, Glasgow, G2 7HX, UK.  
Tel: +44(0)141 243 8000  
www.jacobs.com

Client  
**TRANSPORT SCOTLAND**  
CORPORATE ALBA

Project  
**A9/A96 Inshes to Smithton**

Drawing title  
**DMRB Stage 2  
Phase 1 Habitat Survey Results  
Route Options 1A & 1B**

Sheet 2 of 3

Drawing Status: **FINAL**  
Scale: **@ A3 DO NOT SCALE**

Jacobs No. **B2103501**

Drawing number **Figure 12.4b** Rev **0**

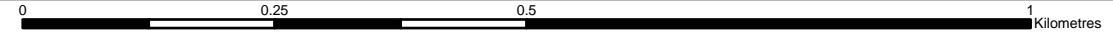
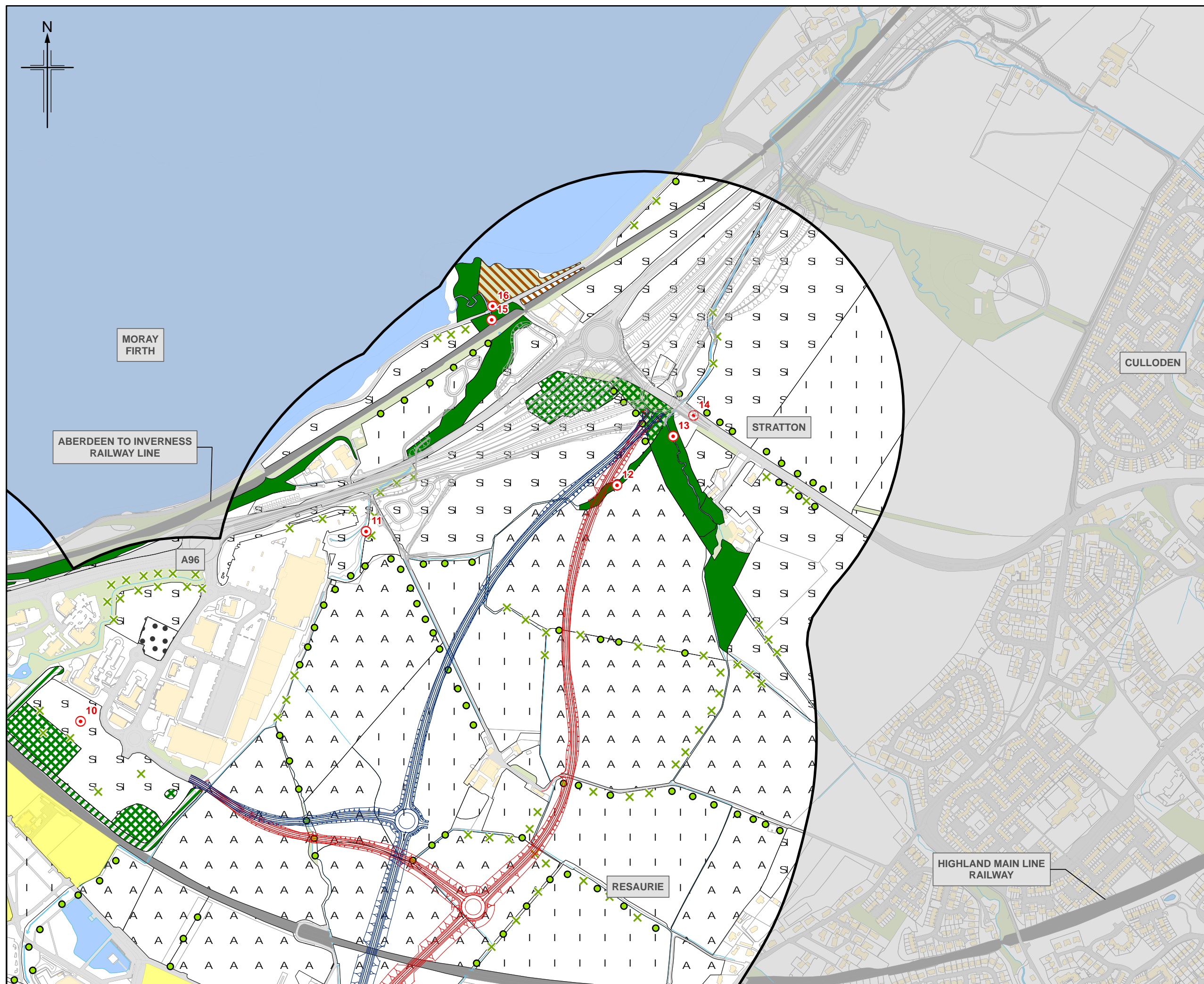




Figure 12.4c



- Legend**
- Route Options 500m Study Area
  - Proposed A96 Dualling Inverness to Nairn (including Nairn Bypass)
  - Route Option 1A
  - Route Option 1B\*
  - Target Notes
  - Scattered broadleaved trees
  - Scattered scrub
  - Amenity grassland
  - Semi-natural Broadleaved Woodland
  - Broadleaved Plantation Woodland
  - Semi-natural Coniferous Woodland
  - Coniferous Plantation Woodland
  - Dense/Continuous Shrub
  - Improved Grassland
  - Poor Semi-improved Grassland
  - Other Tall Herb and Fern - Ruderal
  - Standing water
  - Arable Land
  - Bare ground
  - Other habitat

\* For this route, only the variation to Option 1A has been shown. Where no variation is shown, Option 1B is as Option 1A.

0	OCT 2017	Final	KR	JF	PG	GT
Rev.	Rev. Date	Purpose of revision	Orig/Dwn	Checkd	Rev'd	Apprv'd



Project **A9/A96 Inshes to Smithton**

Drawing title **DMRB Stage 2 Phase 1 Habitat Survey Results Route Options 1A & 1B**

Sheet 3 of 3

Drawing Status	FINAL	DO NOT SCALE
Scale	@ A3	
Jacobs No.	B2103501	
Drawing number	Figure 12.4c	Rev 0



This drawing is not to be used in whole or part other than for the intended purpose and project as defined on this drawing. Refer to the contract for full terms and conditions.