

Figure 12.5a



Legend

- Route Options 500m Study Area
- Proposed A96 Dualling Inverness to Nairn (including Nairn Bypass)
- Option 2A
- Option 2B *
- Target Notes
- Scattered broadleaved trees
- Scattered scrub
- Amenity grassland
- Semi-natural Broadleaved Woodland
- Broadleaved Plantation Woodland
- Semi-natural Coniferous Woodland
- Coniferous Plantation Woodland
- Dense/Continuous Shrub
- Improved Grassland
- Poor Semi-improved Grassland
- Other Tall Herb and Fern - Ruderal
- Standing water
- Arable Land
- Bare ground
- Other habitat

* For this route, only the variation to Option 2A has been shown. Where no variation is shown, Option 2B is as Option 2A.

Rev.	Rev. Date	Purpose of revision	Orig/Dwn	Checkd	Rev'd	Apprv'd
0	OCT 2017	Final	KR	JF	PG	GT

JACOBS
95 Bothwell Street, Glasgow, G2 7HX, UK.
Tel: +44(0)141 243 8000
www.jacobs.com



Client
A9/A96 Inshes to Smithton

Project
**DMRB Stage 2
Phase 1 Habitat Survey Results
Route Options 2A & 2B**

Drawing Status: **FINAL**
Scale: **@ A3 DO NOT SCALE**

Jacobs No. **B2103501**
Drawing number **Figure 12.5a** Rev **0**

This drawing is not to be used in whole or part other than for the intended purpose and project as defined on this drawing. Refer to the contract for full terms and conditions.

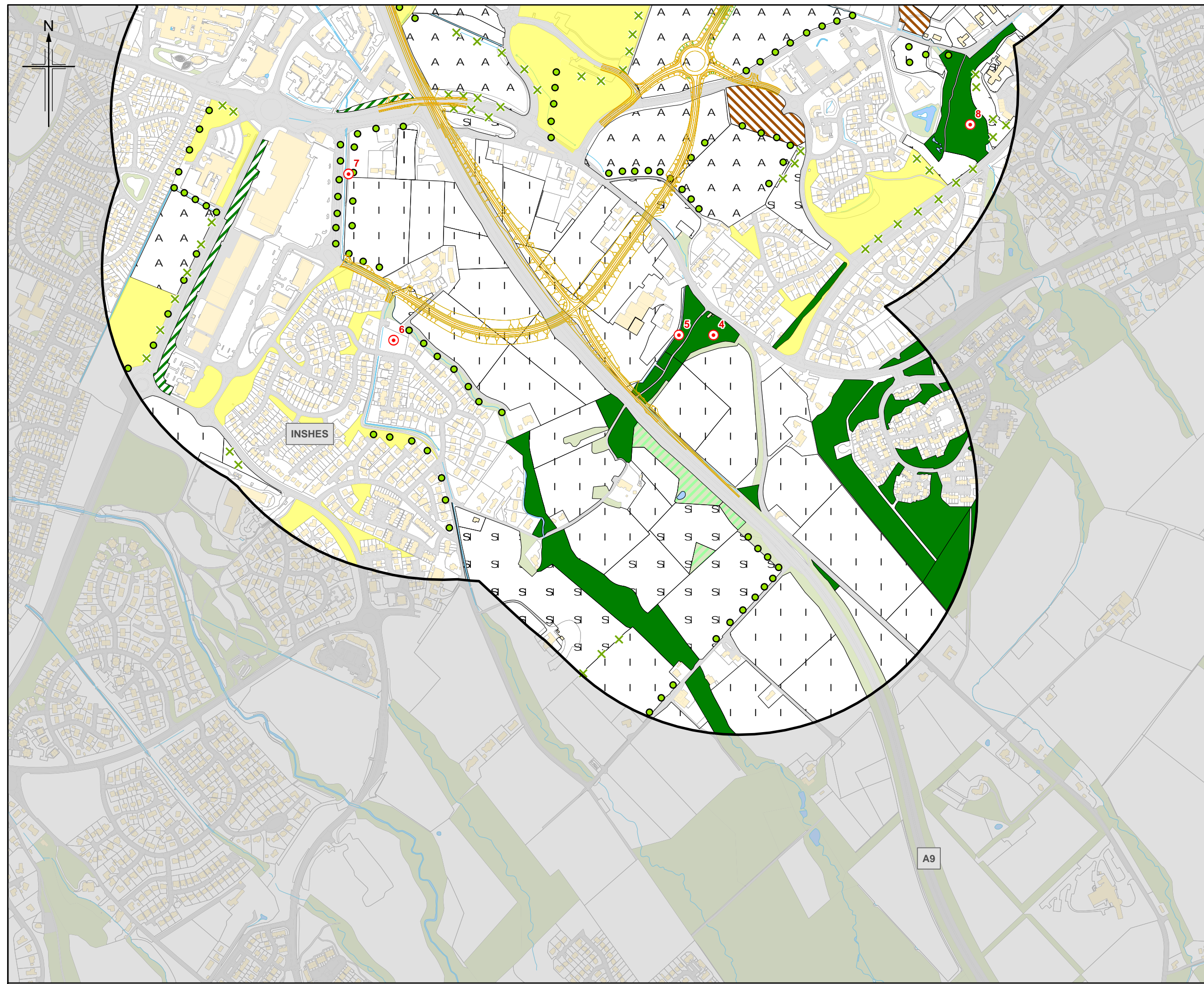
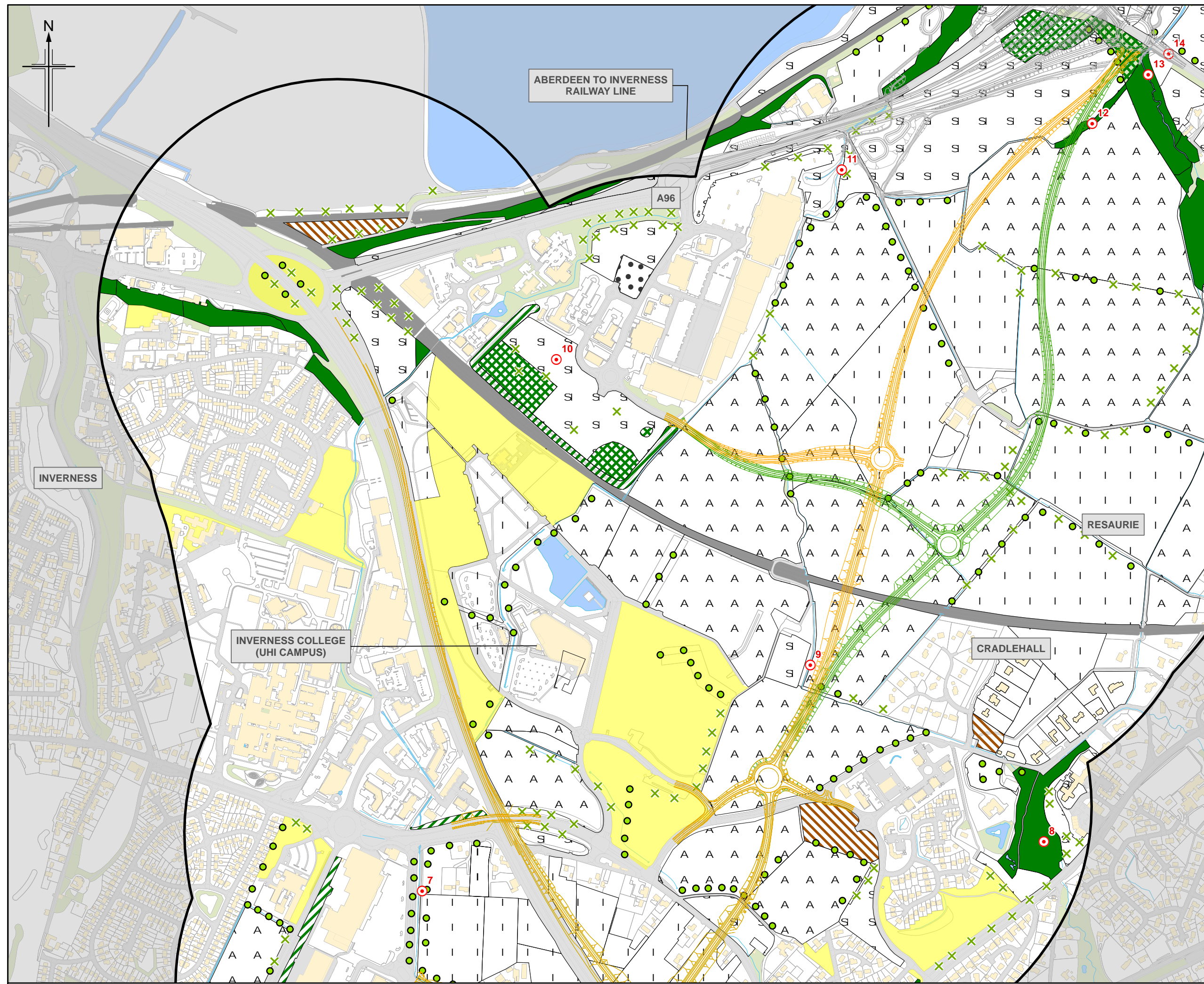


Figure 12.5b



- Legend**
- Route Options 500m Study Area
 - Proposed A96 Dualling Inverness to Nairn (including Nairn Bypass)
 - Option 2A
 - Option 2B*
 - Target Notes
 - Scattered broadleaved trees
 - Scattered scrub
 - Amenity grassland
 - Semi-natural Broadleaved Woodland
 - Broadleaved Plantation Woodland
 - Semi-natural Coniferous Woodland
 - Coniferous Plantation Woodland
 - Dense/Continuous Shrub
 - Improved Grassland
 - Poor Semi-improved Grassland
 - Other Tall Herb and Fern - Ruderal
 - Standing water
 - Arable Land
 - Bare ground
 - Other habitat

For this route, only the variation to Option 2A has been shown. Where no variation is shown, Option 2B is as Option 2A.

Rev.	Rev. Date	Purpose of revision	Orig/Dwn	Checkd	Rev'd	Apprv'd
0	OCT 2017	Final	KR	JF	PG	GT

JACOBS
 95 Bothwell Street, Glasgow, G2 7HX, UK.
 Tel: +44(0)141 243 8000
 www.jacobs.com



Client
A9/A96 Inshes to Smithton

Drawing title
**DMRB Stage 2
 Phase 1 Habitat Survey Results
 Route Options 2A & 2B**

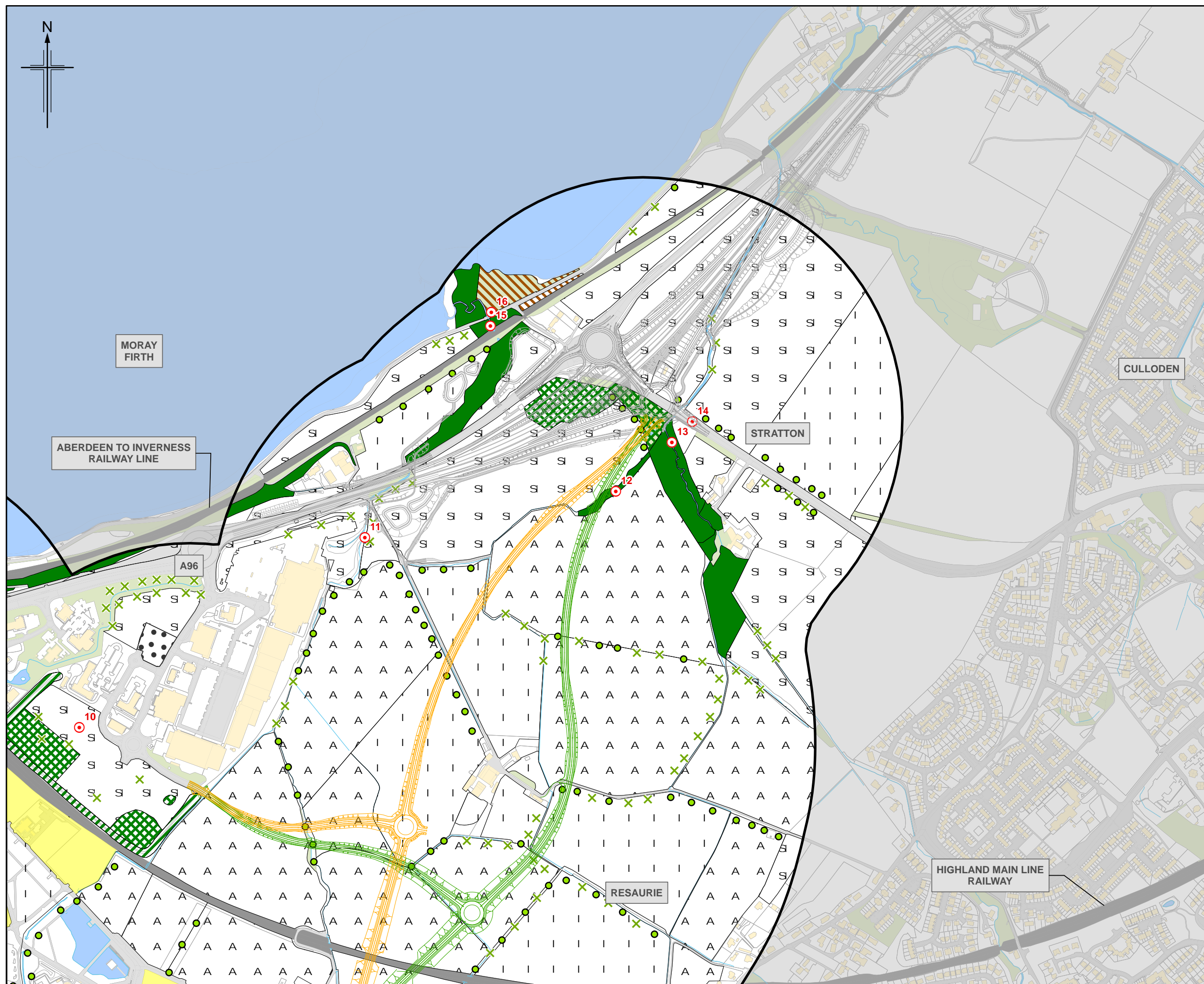
Sheet 2 of 3

Drawing Status	FINAL
Scale	@ A3 DO NOT SCALE
Jacobs No.	B2103501
Drawing number	Figure 12.5b
Rev	0



This drawing is not to be used in whole or part other than for the intended purpose and project as defined on this drawing. Refer to the contract for full terms and conditions.

Figure 12.5c



- Legend**
- Route Options 500m Study Area
 - Proposed A96 Dualling Inverness to Nairn (including Nairn Bypass)
 - Option 2A
 - Option 2B*
 - Target Notes
 - Scattered broadleaved trees
 - Scattered scrub
 - Amenity grassland
 - Semi-natural Broadleaved Woodland
 - Broadleaved Plantation Woodland
 - Semi-natural Coniferous Woodland
 - Coniferous Plantation Woodland
 - Dense/Continuous Shrub
 - Improved Grassland
 - Poor Semi-improved Grassland
 - Other Tall Herb and Fern - Ruderal
 - Standing water
 - Arable Land
 - Bare ground
 - Other habitat

* For this route, only the variation to Option 2A has been shown. Where no variation is shown, Option 2B is as Option 2A.

Rev.	Rev. Date	Purpose of revision	Orig/Dwn	Checkd	Rev'd	Apprv'd
0	OCT 2017	Final	KR	JF	PG	GT



Client: **A9/A96 Inshes to Smithton**

Project: **DMRB Stage 2 Phase 1 Habitat Survey Results Route Options 2A & 2B**

Drawing Status	FINAL
Scale	@ A3 DO NOT SCALE
Jacobs No.	B2103501
Drawing number	Figure 12.5c
Rev	0

