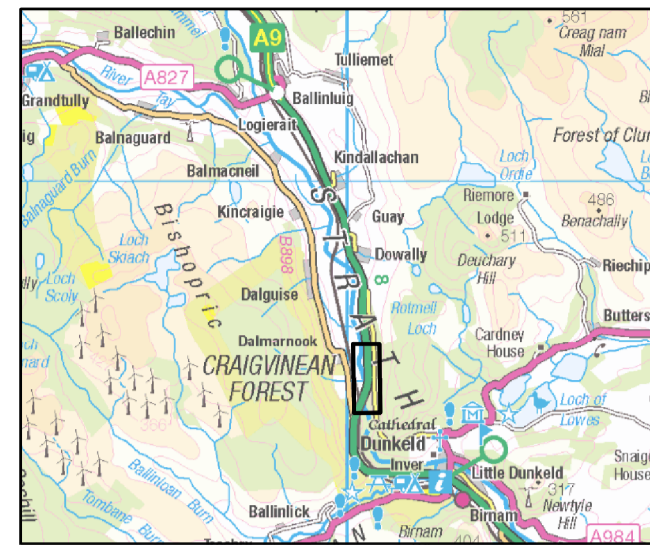
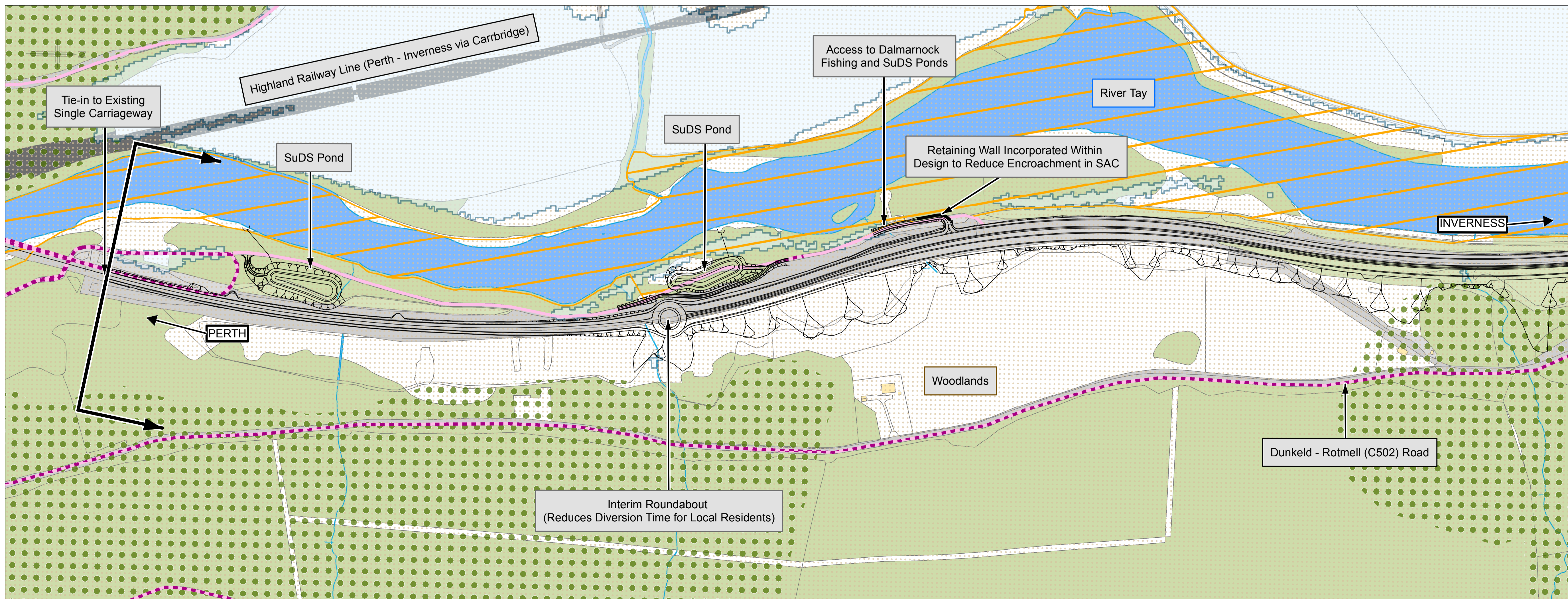
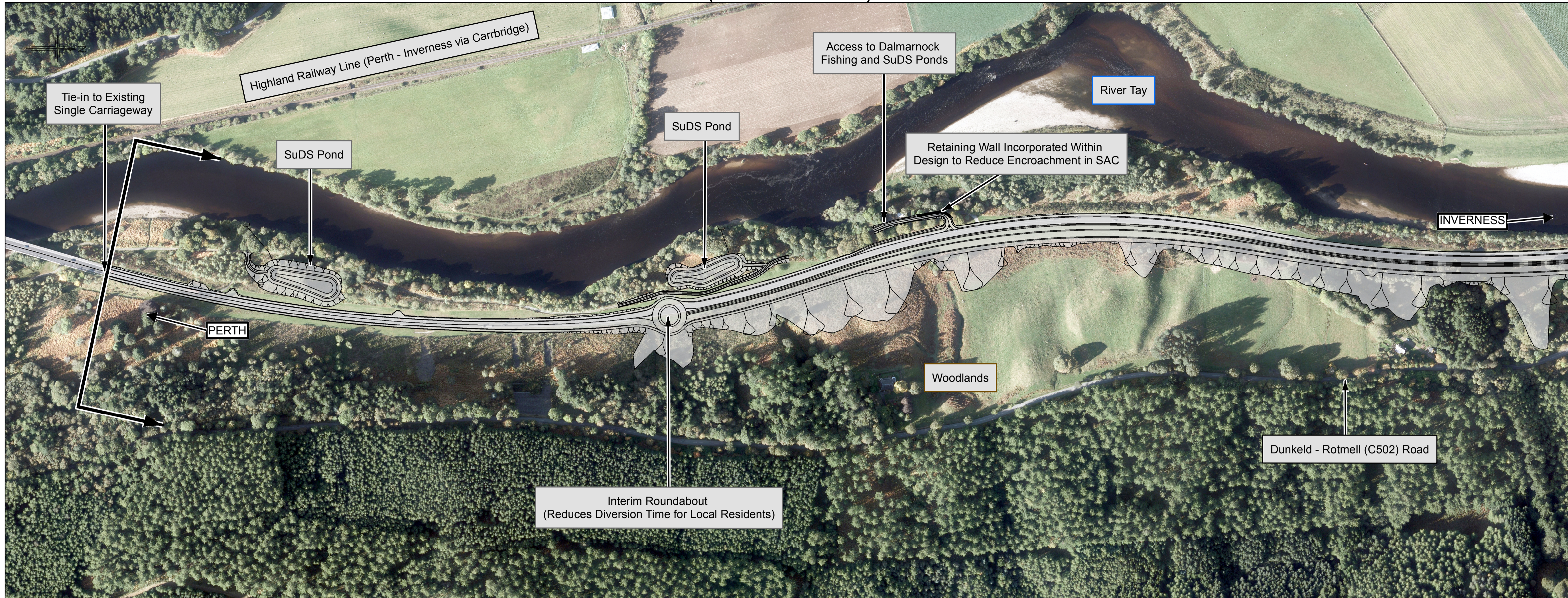


# TAY CROSSING TO BALLINLUIG (SHEET 1 OF 5) - KINDALLACHAN NORTH OVERBRIDGE OPTION



## Legend - Design

- Proposed scheme
- Cutting
- Embankment
- Structure
- Drainage Outfall
- Retaining Wall

## Legend - Constraints

- Buildings
- Roads and Tracks
- Rail
- Non-Motorised User Route (Pedestrian, Cyclist and Equestrian)
- Listed Building
- Scheduled Monument
- Site of Special Scientific Interest (SSSI)
- Special Area of Conservation (SAC)
- Ancient Woodland Inventory
- Inland Water
- Jacobs 1 in 200 Year Plus Climate Change Fluvial Flood Zone
- National Scenic Area

## Legend - Annotation

- Information
- Infrastructure
- Environment
- Property
- Watercourses

### Please Note:

The options shown on this drawing are indicative and will be developed further during the next stage of design development. This will include the mainline alignment, the layout of the junctions, lay-bys, side roads and private means of access. Environmental mitigation will also be added to the scheme design.