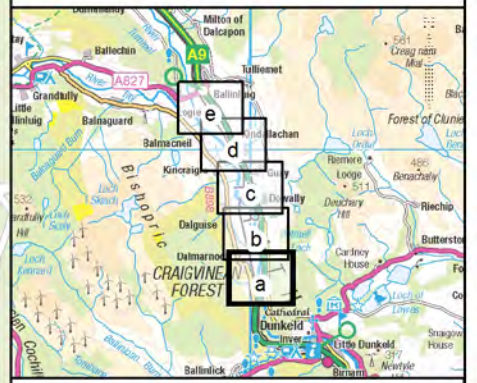


Figure 12.11a



- Legend**
- Proposed scheme (DMRB Stage 3 design)
 - SuDS
 - Macrophyte survey sample point (Mb)
 - Macroinvertebrate survey sample point (Mi)

Freshwater Aquatic Habitat Quality of Water Feature (WF) Survey Reach

- Excellent (Green)
- Good (Yellow)
- Moderate (Orange)
- Poor (Red)

Surface Water Feature Name			
Fish*	Salmon	Eel	Trout
	Brook lamprey	River lamprey	Sea lamprey
Macro-invertebrates	APRIL		NOVEMBER
	WFD Classification**		WFD Classification**
Macrophytes	CCI Conservation Value**		CCI Conservation Value**
	Species (CCI CS ≥6)***		Species (CCI CS ≥6)***
WFD Classification*			

WFD Classification**	Bad/Poor	Moderate	Good/High
CCI Conservation Value**	Low	Moderate	Fairly High/High

* Information on fish presence is from Tay DSFB and notes on habitat and accessibility from aquatic walkover surveys. Species name shaded if expected to be present.

** WFD = Water Framework Directive
CCI = Community Conservation Index

*** Species of Conservation Interest (see ES Ch.12 for details)

n/a = not applicable

Rev.	Rev. Date	Purpose of revision	Orig/Dwn	Checkd	Rev'd	Apprv'd
0	JUL 2018	ES Publication	KA	EM	PG	AJG

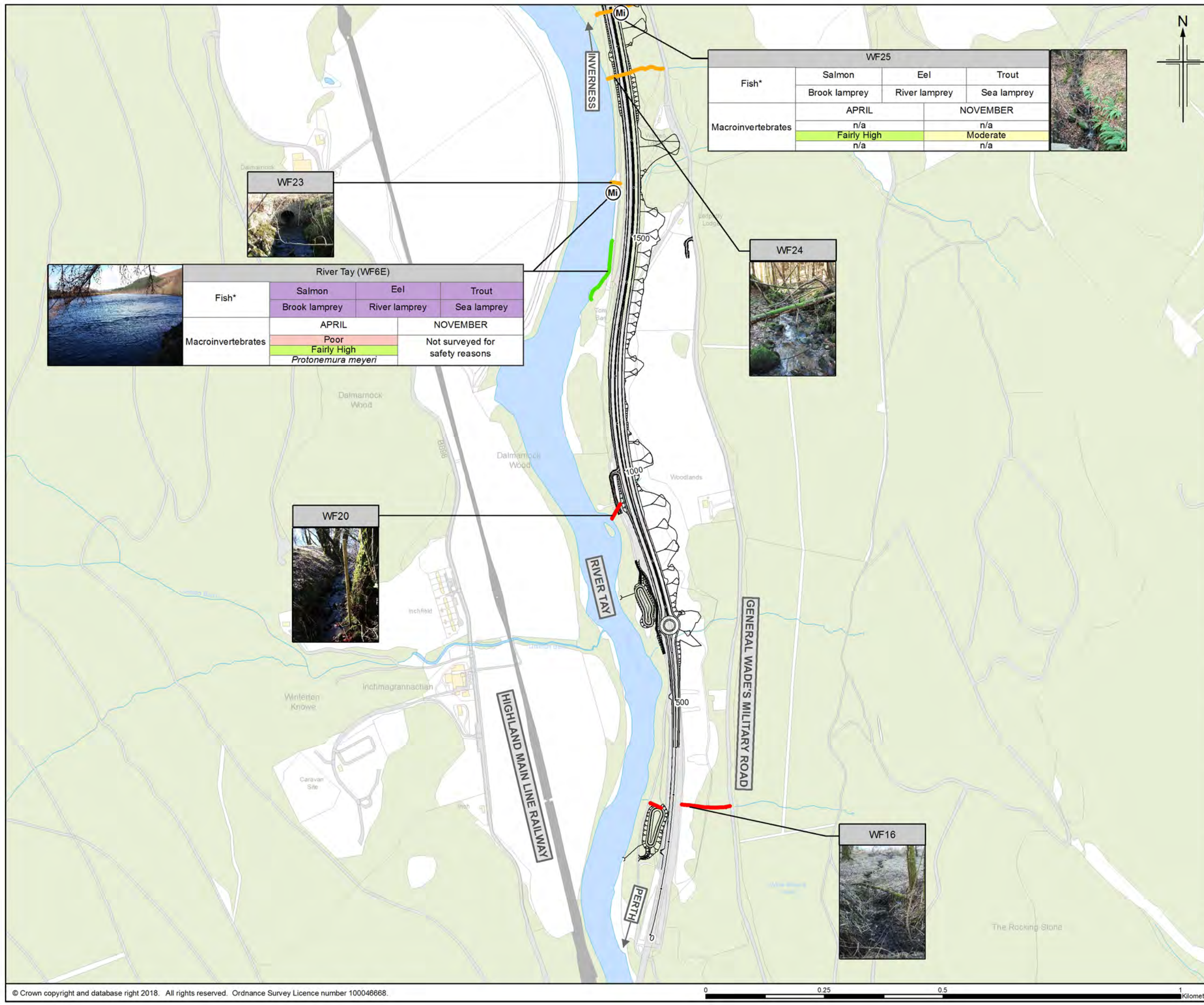


**Environmental Statement
Aquatic Survey Results**

Sheet 1 of 5

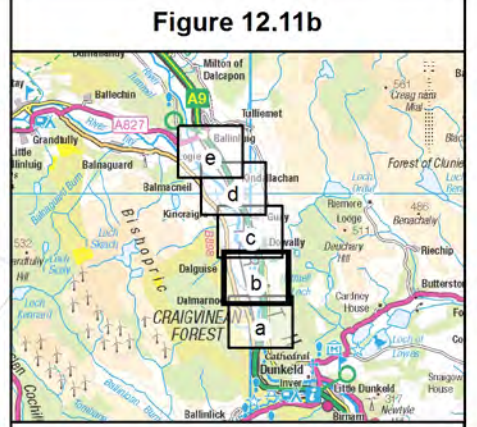
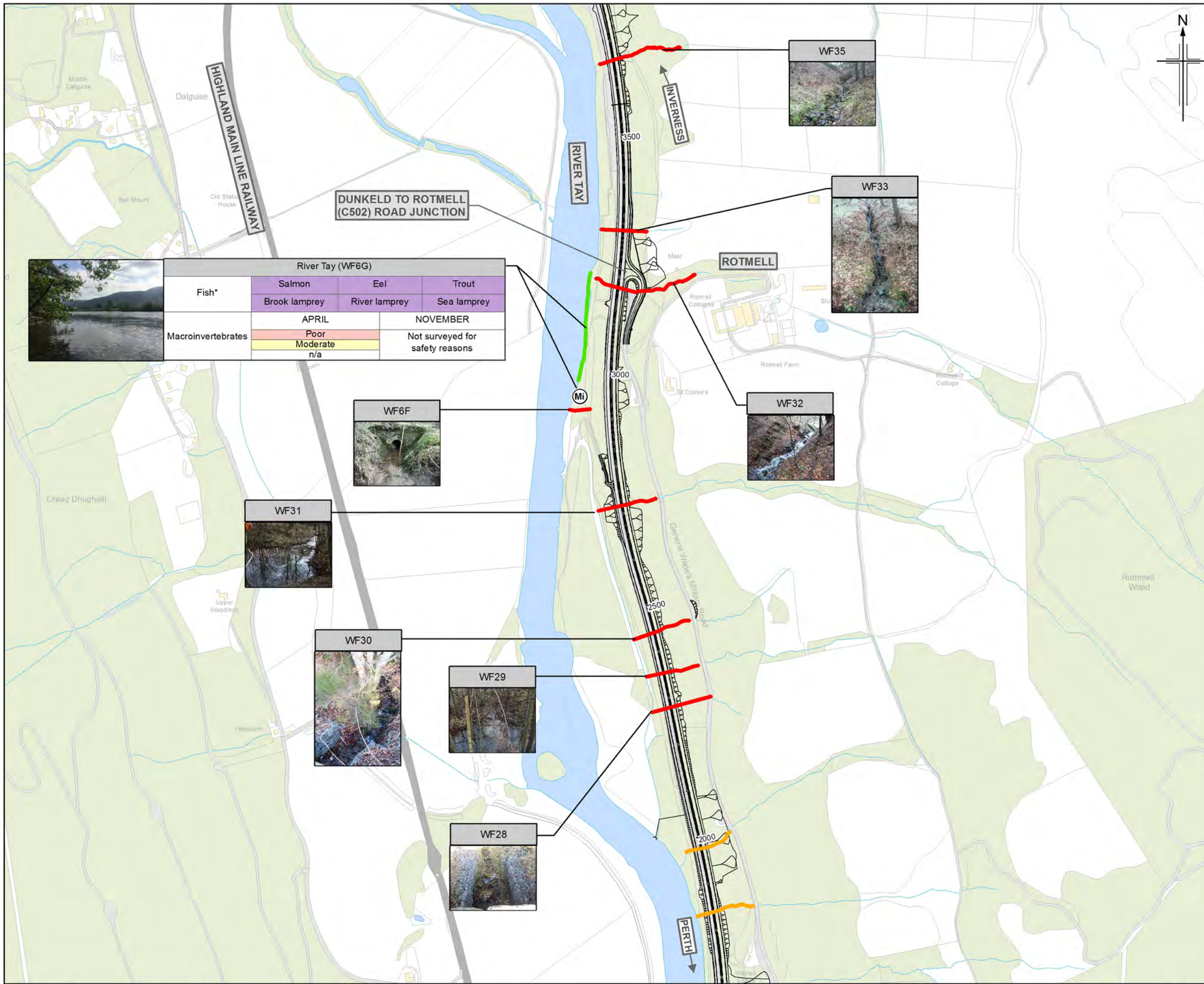
Drawing Status	FINAL		
Scale	1:7,500	@ A3	DO NOT SCALE
Jacobs No.	B2140003		
BIM No.			
Drawing number	Figure 12.11a		Rev 0

© Copyright 2018 Jacobs U.K. Limited. The concepts and information contained in this document are the property of Jacobs. Use or copying of this document in whole or in part without the written permission of Jacobs constitutes an infringement of copyright. Limitation: This drawing has been prepared on behalf of, and for the exclusive use of Jacobs' Client, and is subject to, and issued in accordance with, the provisions of the contract between Jacobs and the Client. Jacobs accepts no liability or responsibility whatsoever for, or in respect of, any use of, or reliance upon, this drawing by any third party.



WF25			
Fish*	Salmon	Eel	Trout
	Brook lamprey	River lamprey	Sea lamprey
Macroinvertebrates	APRIL		NOVEMBER
	Fairly High		Moderate
	n/a		n/a

River Tay (WF6E)			
Fish*	Salmon	Eel	Trout
	Brook lamprey	River lamprey	Sea lamprey
Macroinvertebrates	APRIL		NOVEMBER
	Fairly High		Not surveyed for safety reasons
	Poor		
	Protonemura meyeri		



- Legend**
 (DMRB Stage 3 design)
 SuDS
 (M) Macrophyte survey sample point
 (Mi) Macroinvertebrate survey sample point

- Freshwater Aquatic Habitat Quality of Water Feature (WF) Survey Reach**
- Excellent
 - Good
 - Moderate
 - Poor

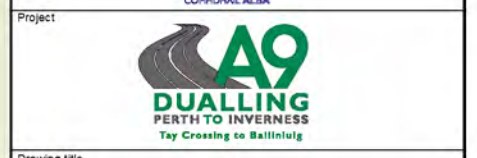
Surface Water Feature Name			
Fish*	Salmon	Eel	Trout
	Brook lamprey	River lamprey	Sea lamprey
Macro-invertebrates	APRIL		NOVEMBER
	WFD Classification**	WFD Classification**	
Macrophytes	WFD Classification*		

WFD Classification**	Bad/Poor	Moderate	Good/High
CCI Conservation Value**	Low	Moderate	Fairly High/High

* Information on fish presence is from Tay DSFB and notes on habitat and accessibility from aquatic walkover surveys. Species name shaded if expected to be present.
 ** WFD = Water Framework Directive
 CCI = Community Conservation Index
 *** Species of Conservation Interest (see ES Ch.12 for details)

n/a = not applicable

Rev.	Rev. Date	Purpose of revision	Orig/Dwn	Check/Rev'd	Appr'd	
0	JUL 2018	ES Publication	KA	EM	PG	AJG



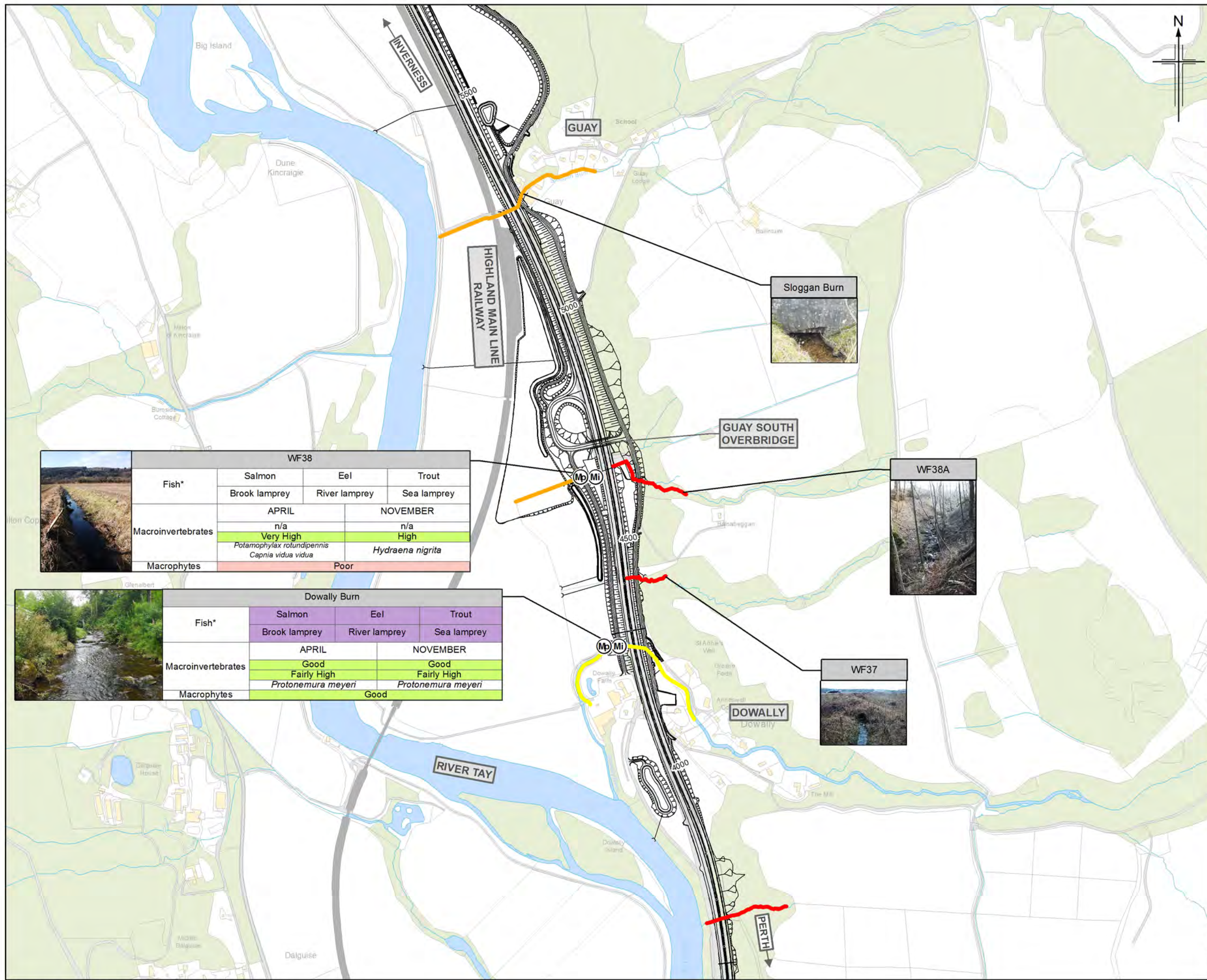
**Environmental Statement
 Aquatic Survey Results**

Sheet 2 of 5

Drawing Status	FINAL		
Scale	1:7,500	@ A3	DO NOT SCALE
Jacobs No.	B2140003		
BIM No.			
Drawing number	Figure 12.11b	Rev	0

© Copyright 2018 Jacobs U.K. Limited. The concepts and information contained in this document are the property of Jacobs. Use or copying of this document in whole or in part without the written permission of Jacobs constitutes an infringement of copyright. Limitation: This drawing has been prepared on behalf of, and for the exclusive use of Jacobs' Client, and is subject to, and issued in accordance with, the provisions of the contract between Jacobs and the Client. Jacobs accepts no liability or responsibility whatsoever for, or in respect of, any use of, or reliance upon, this drawing by any third party.

Figure 12.11c



- Legend**
 (DMRB Stage 3 design)
 Proposed scheme
 SuDS
 Macrophyte survey sample point
 Macroinvertebrate survey sample point

Freshwater Aquatic Habitat Quality of Water Feature (WF) Survey Reach

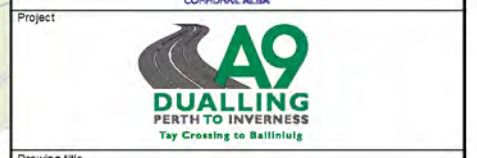
- Excellent
- Good
- Moderate
- Poor

Surface Water Feature Name			
Fish*	Salmon	Eel	Trout
	Brook lamprey	River lamprey	Sea lamprey
Macro-invertebrates	APRIL		NOVEMBER
	WFD Classification**	WFD Classification**	WFD Classification**
Macrophytes	WFD Classification*		
	WFD Classification**	Bad/Poor	Moderate
CCI Conservation Value**		Low	Fairly High/High

* Information on fish presence is from Tay DSFB and notes on habitat and accessibility from aquatic walkover surveys. Species name shaded if expected to be present.
 ** WFD = Water Framework Directive
 CCI = Community Conservation Index
 *** Species of Conservation Interest (see ES Ch.12 for details)

n/a = not applicable

Rev.	Rev. Date	ES Publication	Purpose of revision	Orig/Dwn	Checkd	Rev'd	Apprv'd
0	JUL 2018	ES Publication		KA	EM	PG	A/JG



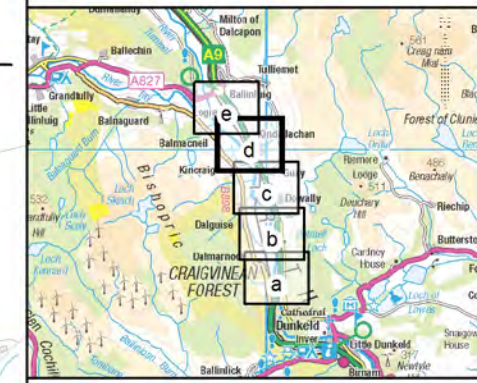
**Environmental Statement
 Aquatic Survey Results**

Sheet 3 of 5

Drawing Status	FINAL		
Scale	1:7,500	@ A3	DO NOT SCALE
Jacobs No.	B2140003		
BIM No.			
Drawing number	Figure 12.11c		Rev 0

© Copyright 2018 Jacobs U.K. Limited. The concepts and information contained in this document are the property of Jacobs. Use or copying of this document in whole or in part without the written permission of Jacobs constitutes an infringement of copyright. Limitation: This drawing has been prepared on behalf of, and for the exclusive use of Jacobs' Client, and is subject to, and issued in accordance with, the provisions of the contract between Jacobs and the Client. Jacobs accepts no liability or responsibility whatsoever for, or in respect of, any use of, or reliance upon, this drawing by any third party.

Figure 12.11d



- Legend**
- Proposed scheme (DMRB Stage 3 design)
 - SuDS
 - Macrophyte survey sample point
 - Macroinvertebrate survey sample point

Freshwater Aquatic Habitat Quality of Water Feature (WF) Survey Reach

- Excellent
- Good
- Moderate
- Poor

Surface Water Feature Name				
Fish*	Salmon	Eel	Trout	
	Brook lamprey	River lamprey	Sea lamprey	
Macro-invertebrates	APRIL		NOVEMBER	
	WFD Classification**		WFD Classification**	
Macrophytes	CCI Conservation Value**		CCI Conservation Value**	
	Species (CCI CS ≥6)***		Species (CCI CS ≥6)***	

* Information on fish presence is from Tay DSFB and notes on habitat and accessibility from aquatic walkover surveys. Species name shaded if expected to be present.

** WFD = Water Framework Directive
CCI = Community Conservation Index

*** Species of Conservation Interest (see ES Ch.12 for details)

n/a = not applicable

Rev.	Rev. Date	Purpose of revision	Orig/Dwn	Check/Rev'd	Apprv'd
0	JUL 2018	ES Publication	KA	EM	PG

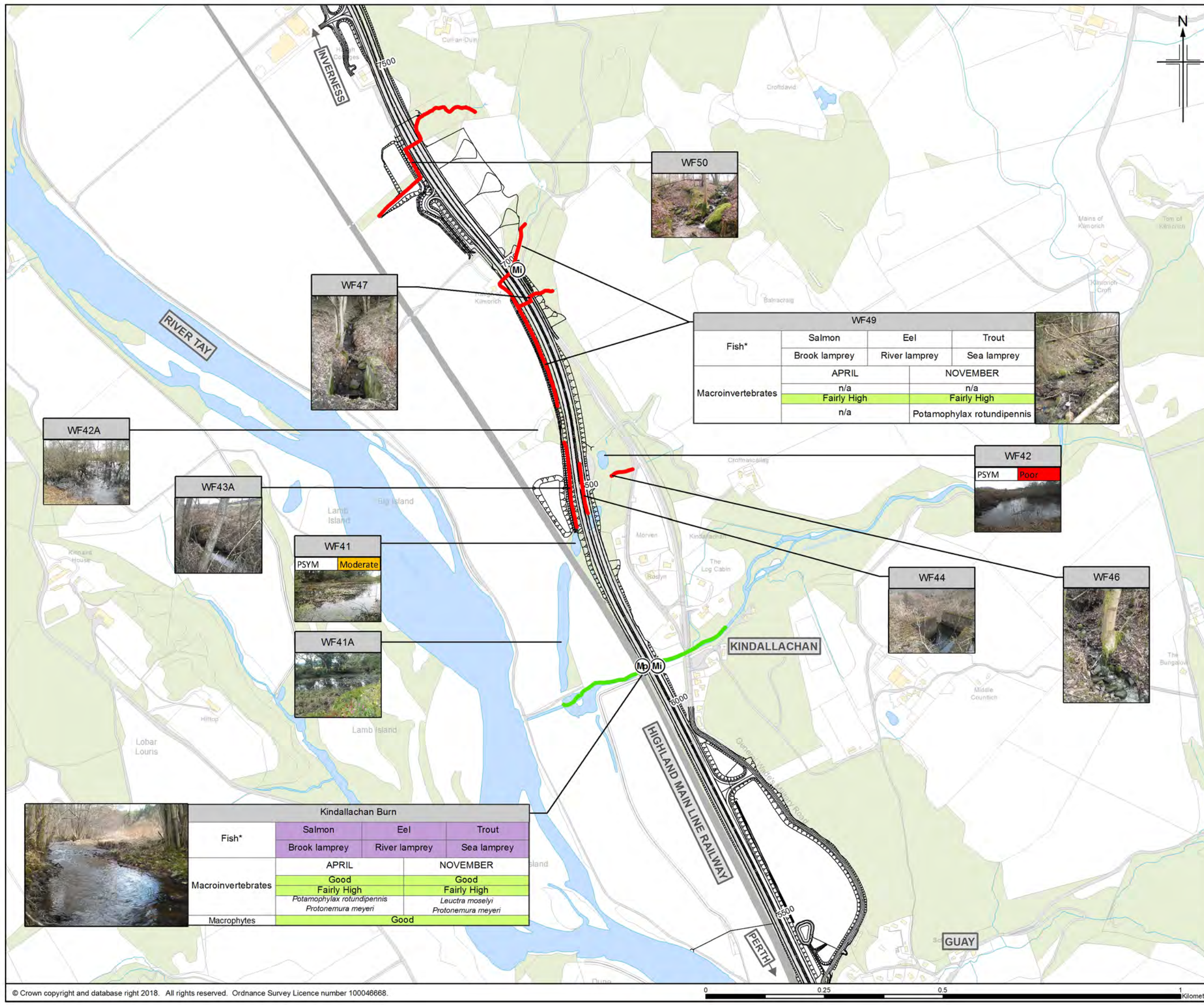


**Environmental Statement
Aquatic Survey Results**

Sheet 4 of 5

Drawing Status	FINAL
Scale	1:7,500 @ A3 DO NOT SCALE
Jacobs No.	B2140003
BIM No.	
Drawing number	Figure 12.11d
Rev	0

© Copyright 2018 Jacobs U.K. Limited. The concepts and information contained in this document are the property of Jacobs. Use or copying of this document in whole or in part without the written permission of Jacobs constitutes an infringement of copyright. Limitation: This drawing has been prepared on behalf of, and for the exclusive use of Jacobs' Client, and is subject to, and issued in accordance with, the provisions of the contract between Jacobs and the Client. Jacobs accepts no liability or responsibility whatsoever for, or in respect of, any use of, or reliance upon, this drawing by any third party.



Fish*	Salmon	Eel	Trout
	Brook lamprey	River lamprey	Sea lamprey
Macroinvertebrates	APRIL		NOVEMBER
	Fairly High		Fairly High
Macrophytes	n/a		Potamophylax rotundipennis

WF41	
PSYM	Moderate

WF42	
PSYM	Poor

WF41A	
PSYM	Good



Kindallachan Burn				
Fish*	Salmon	Eel	Trout	
	Brook lamprey	River lamprey	Sea lamprey	
Macroinvertebrates	APRIL		NOVEMBER	
	Good		Good	
Macrophytes	Fairly High		Fairly High	
	Potamophylax rotundipennis Protonemura meyeri		Leuctra moselyi Protonemura meyeri	

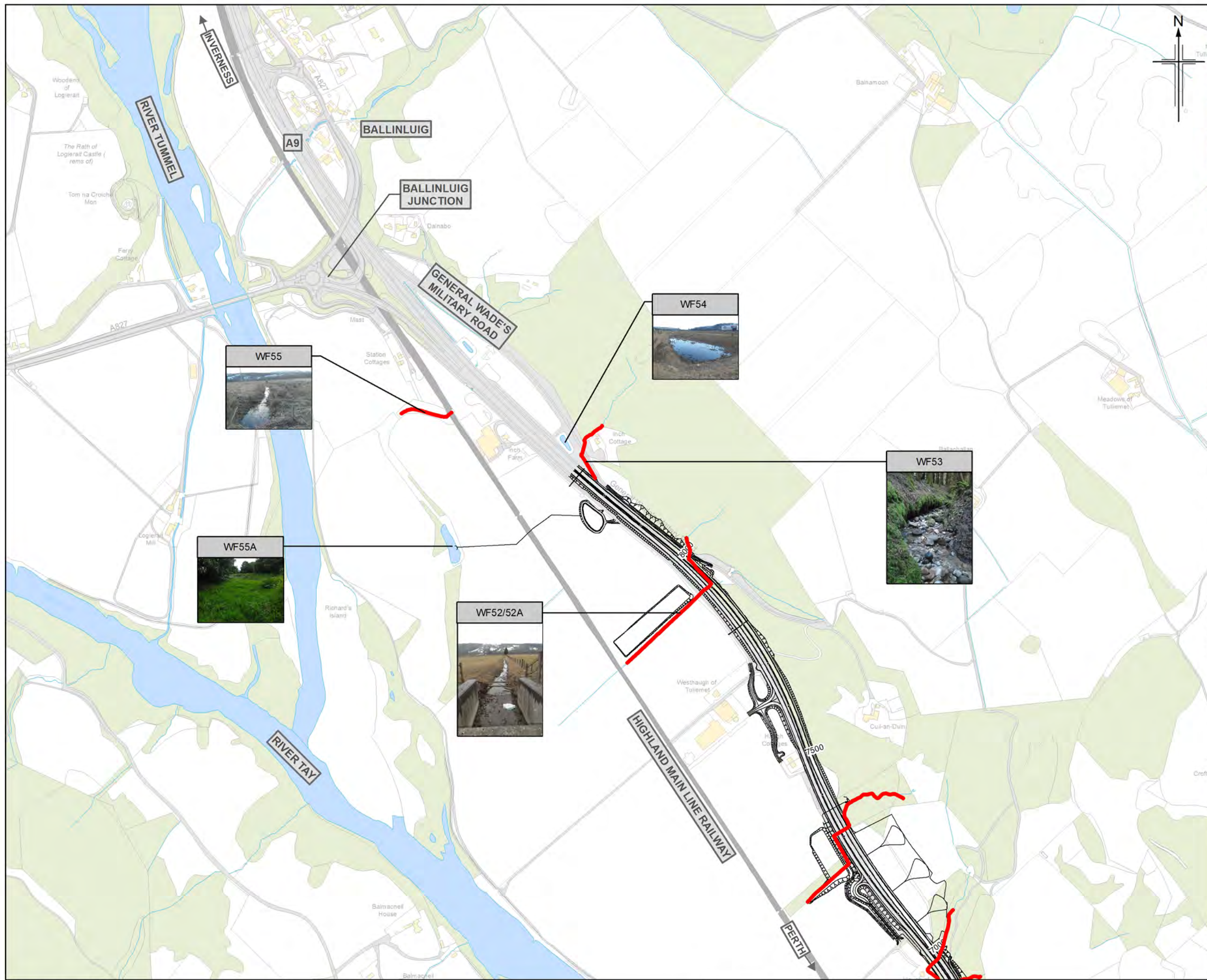


Figure 12.11e

Legend
 Proposed scheme (DMRB Stage 3 design)
 SuDS
 Macrophyte survey sample point
 Macroinvertebrate survey sample point

Freshwater Aquatic Habitat Quality of Water Feature (WF) Survey Reach

- Excellent
- Good
- Moderate
- Poor

Surface Water Feature Name			
Fish*	Salmon	Eel	Trout
	Brook lamprey	River lamprey	Sea lamprey
Macro-invertebrates	APRIL		NOVEMBER
	WFD Classification**	WFD Classification**	
Macrophytes	CCI Conservation Value**		CCI Conservation Value**
	Species (CCI CS 26)***		Species (CCI CS 26)***
WFD Classification*			

WFD Classification**	Bad/Poor	Moderate	Good/High
CCI Conservation Value**	Low	Moderate	Fairly High/High

* Information on fish presence is from Tay DSFB and notes on habitat and accessibility from aquatic walkover surveys. Species name shaded if expected to be present.
 ** WFD = Water Framework Directive
 CCI = Community Conservation Index
 *** Species of Conservation Interest (see ES Ch.12 for details)

n/a = not applicable

Rev.	Rev. Date	ES Publication	Orig/Dwn	Checked	Rev'd	Appr'd
0	JUL 2018	ES Publication	KA	EM	PG	A/JG

JACOBS
 35 Selkirk Street, Glasgow, G2 7JH, UK
 Tel: +44(0)141 243 8000
 www.jacobs.com

Client: **TRANSPORT SCOTLAND**
 COMHAIL ALBA

Project: **A9 DUALLING PERTH TO INVERNESS**
 Tay Crossing to Ballinluig

Drawing title: **Environmental Statement Aquatic Survey Results**

Sheet 5 of 5

Drawing Status	Scale	Jacobs No.	BIM No.	Drawing number	Rev
FINAL	1:7,500 @ A3	B2140003		Figure 12.11e	0

© Copyright 2018 Jacobs U.K. Limited. The concepts and information contained in this document are the property of Jacobs. Use or copying of this document in whole or in part without the written permission of Jacobs constitutes an infringement of copyright. Limitation: This drawing has been prepared on behalf of, and for the exclusive use of Jacobs' Client, and is subject to, and issued in accordance with, the provisions of the contract between Jacobs and the Client. Jacobs accepts no liability or responsibility whatsoever for, or in respect of, any use of, or reliance upon, this drawing by any third party.