

Figure 17.1a

Legend

- Proposed scheme (DMRB Stage 3 design)
- SuDS
- Noise and vibration study area
- Noise and vibration calculation area

0	JUL 2018	ES Publication	PM	AJ	BM	AUG
Rev.	Rev. Date	Purpose of revision	Orig/Dwn	Checkd	Rev'd	Apprv'd

JACOBS

95 Bothwell Street, Glasgow, G2 7HX, UK.
Tel: +44(0)141 243 8000
www.jacobs.com

TRANSPORT SCOTLAND

CONNOCHAS ALBA

A9 DUALLING

PERTH TO INVERNESS

Tay Crossing to Ballinluig

Environmental Statement

Noise and Vibration Study Area

and Calculation Area

Sheet 1 of 2

Drawing Status	FINAL
Scale	1:25,000 @ A3 DO NOT SCALE
Jacobs No.	B2140003
BIM No.	
Drawing number	Figure 17.1a
Rev	0

© Copyright 2018 Jacobs U.K. Limited. The concepts and information contained in this document are the property of Jacobs. Use or copying of this document in whole or in part without the written permission of Jacobs constitutes an infringement of copyright. Limitation: This drawing has been prepared on behalf of, and for the exclusive use of Jacobs Client, and is subject to, and issued in accordance with, the provisions of the contract between Jacobs and the Client. Jacobs accepts no liability or responsibility whatsoever for, or in respect of, any use of, or reliance upon, this drawing by any third party.



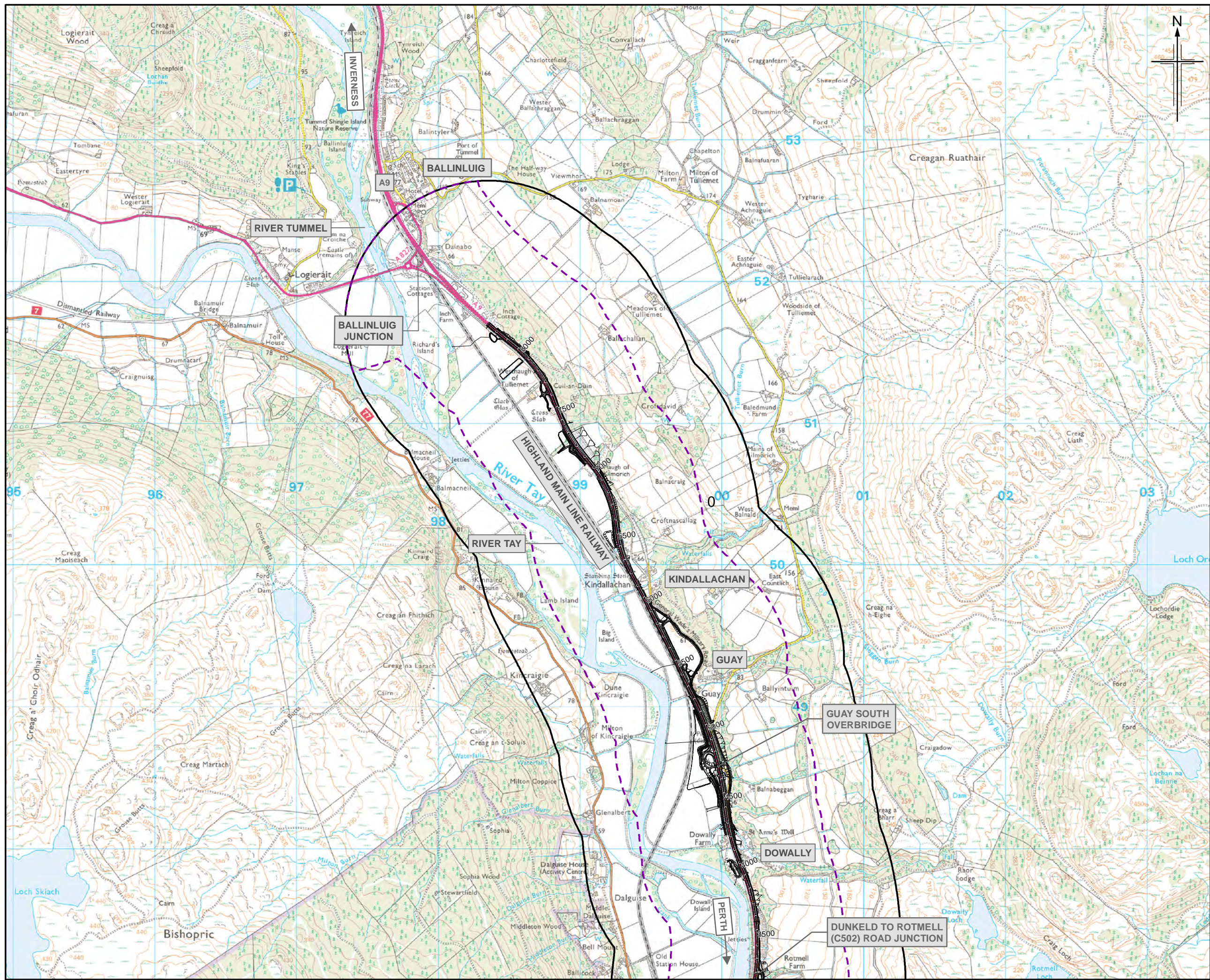


Figure 17.1b

Legend

- Proposed scheme (DMRB Stage 3 design)
- SuDS
- Noise and vibration study area
- Noise and vibration calculation area

0	JUL 2018	ES Publication	PM	AJ	BM	AJG
Rev.	Rev. Date	Purpose of revision	Orig/Dwn	Checkd	Rev'd	Apprv'd

JACOBS
95 Bothwell Street, Glasgow, G2 7HX, UK.
Tel: +44(0)141 243 8000
www.jacobs.com

Client

Project

Drawing title
**Environmental Statement
Noise and Vibration Study Area
and Calculation Area**
Sheet 2 of 2

Drawing Status	FINAL
Scale	1:25,000 @ A3 DO NOT SCALE
Jacobs No.	B2140003
BIM No.	
Drawing number	Figure 17.1b
Rev	0

© Copyright 2018 Jacobs U.K. Limited. The concepts and information contained in this document are the property of Jacobs. Use or copying of this document in whole or in part without the written permission of Jacobs constitutes an infringement of copyright. Limitation: This drawing has been prepared on behalf of, and for the exclusive use of Jacobs Client, and is subject to, and issued in accordance with, the provisions of the contract between Jacobs and the Client. Jacobs accepts no liability or responsibility whatsoever for, or in respect of, any use of, or reliance upon, this drawing by any third party.