

- Legend**  
(DMRB Stage 3 design)
- Proposed scheme
  - SuDS
  - Noise and vibration calculation area
  - Noise and vibration study area
  - Baseline noise monitoring locations - sample receptors

- Do-Minimum Baseline Year Vs Do-Something Baseline Year (L<sub>A10,18hr</sub> Free-field) First Floor**  
x = noise level
- x ≥ 10 dB
  - 5 ≤ x < 10 dB
  - 3 ≤ x < 5 dB
  - 1 ≤ x < 3 dB
  - 0 < x < 1 dB
  - x = 0 dB
  - 1 < x < 0 dB
  - 3 < x ≤ -1 dB
  - 5 < x ≤ -3 dB
  - 10 < x ≤ -5 dB
  - x ≤ -10 dB

Rev.	Rev. Date	Purpose of revision	Orig/Dwn	Check/Rev'd	Apprv'd	
0	JUL 2018	ES Publication	PM	AJ	BM	AJG

**JACOBS**  
95 Bathwell Street, Glasgow, G2 7HX, UK.  
Tel: +44(0)141 243 8000  
www.jacobs.com

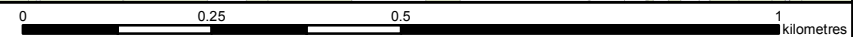
Client  
**TRANSPORT SCOTLAND**  
COPHDHAIL ALBA

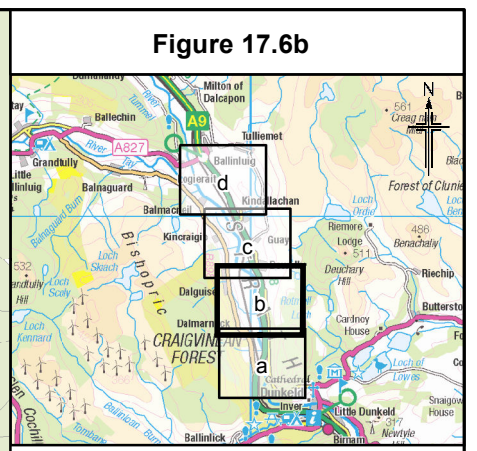
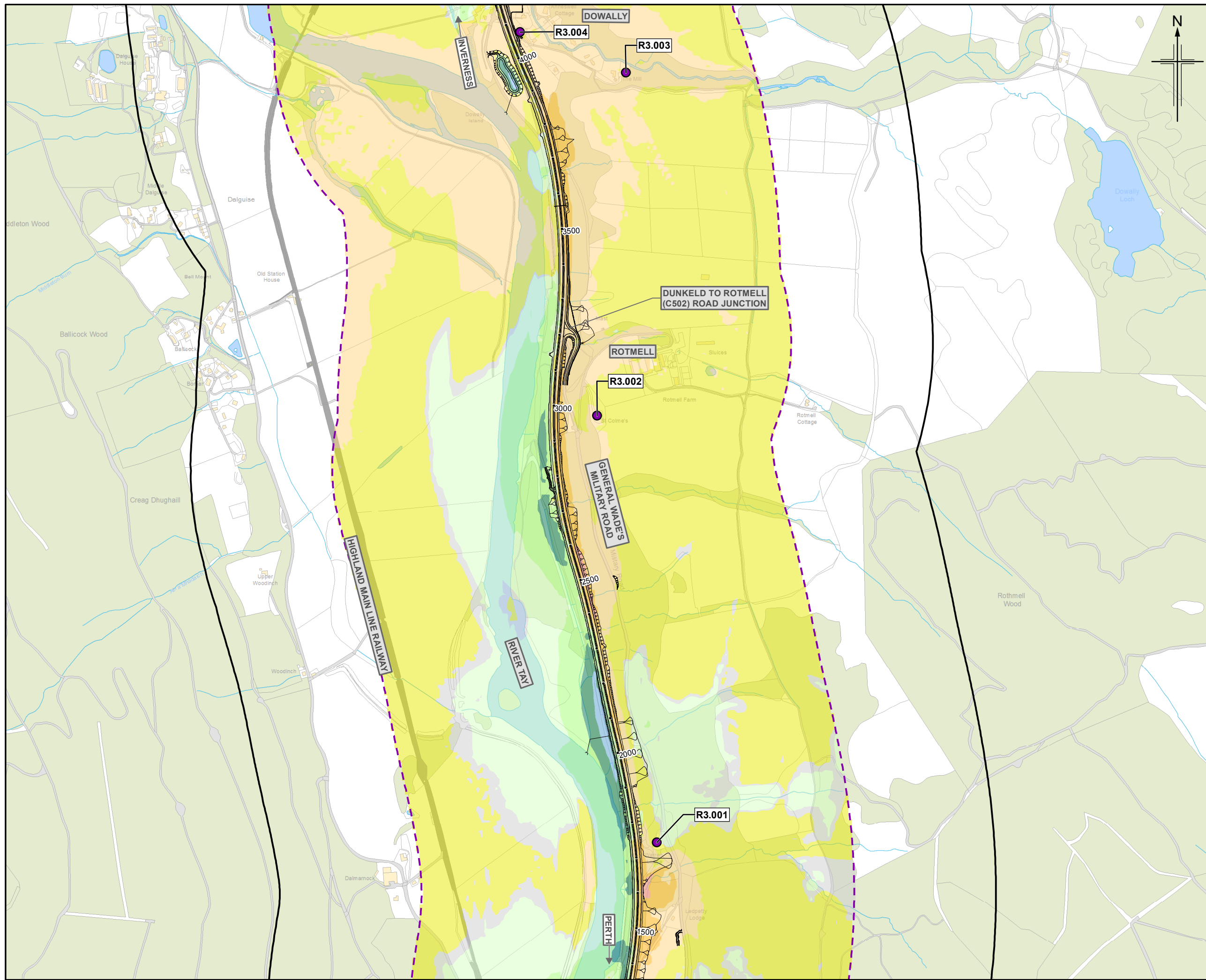
Project  
**A9 DUALLING**  
PERTH TO INVERNESS  
Tay Crossing to Ballinluig

Drawing title  
**Environmental Statement**  
**Noise Level Difference Contour Map**  
**(First Floor) Do-Minimum Baseline Year**  
**Vs Do-Something Baseline Year**  
Sheet 1 of 4

Drawing Status	FINAL
Scale	1:10,000 @ A3 DO NOT SCALE
Jacobs No.	B2140003
BIM No.	
Drawing number	Figure 17.6a
Rev	0

© Copyright 2018 Jacobs U.K. Limited. The concepts and information contained in this document are the property of Jacobs. Use or copying of this document in whole or in part without the written permission of Jacobs constitutes an infringement of copyright. Limitation: This drawing has been prepared on behalf of, and for the exclusive use of Jacobs' Client, and is subject to, and issued in accordance with, the provisions of the contract between Jacobs and the Client. Jacobs accepts no liability or responsibility whatsoever for, or in respect of, any use of, or reliance upon, this drawing by any third party.





**Legend**

- Proposed scheme (DMRB Stage 3 design)
- SuDS
- Noise and vibration calculation area
- Noise and vibration study area
- Baseline noise monitoring locations - sample receptors

**Do-Minimum Baseline Year Vs Do-Something Baseline Year (L<sub>A10,18hr</sub> Free-field) First Floor**  
**x = noise level**

- x ≥ 10 dB
- 5 ≤ x < 10 dB
- 3 ≤ x < 5 dB
- 1 ≤ x < 3 dB
- 0 < x < 1 dB
- x = 0 dB
- -1 < x < 0 dB
- -3 < x ≤ -1 dB
- -5 < x ≤ -3 dB
- -10 < x ≤ -5 dB
- x ≤ -10 dB

Rev.	Rev. Date	Purpose of revision	Orig/Dwn	Checkd	Rev'd	Apprv'd
0	JUL 2018	ES Publication	PM	AJ	BM	AJG

**JACOBS**  
 95 Bothwell Street, Glasgow, G2 7HX, UK.  
 Tel: +44(0)141 243 8000  
 www.jacobs.com

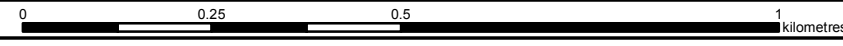
Client  
  
 TRANSPORT SCOTLAND  
 CÒRPHDHAIL ALBA

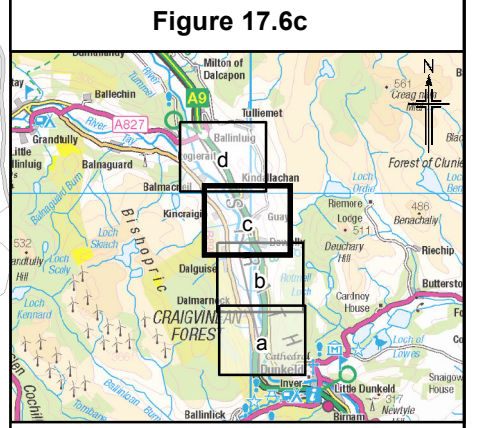
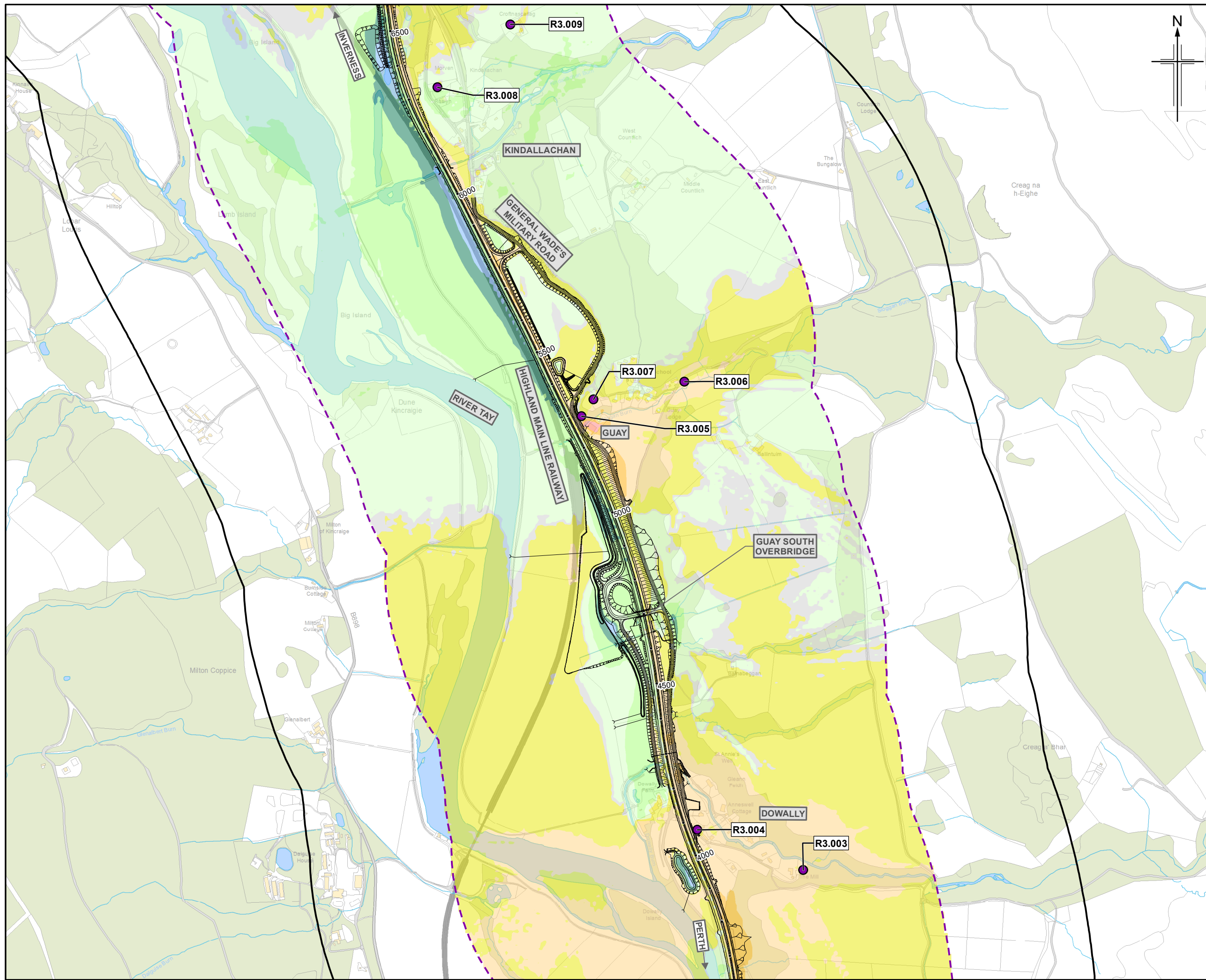
Project  
  
**A9 DUALLING**  
 PERTH TO INVERNESS  
 Tay Crossing to Ballinluig

Drawing title  
**Environmental Statement**  
**Noise Level Difference Contour Map**  
**(First Floor) Do-Minimum Baseline Year**  
**Vs Do-Something Baseline Year**  
 Sheet 2 of 4

Drawing Status	FINAL		
Scale	1:10,000	@ A3	DO NOT SCALE
Jacobs No.	B2140003		
BIM No.			
Drawing number	Figure 17.6b		Rev 0

© Copyright 2018 Jacobs U.K. Limited. The concepts and information contained in this document are the property of Jacobs. Use or copying of this document in whole or in part without the written permission of Jacobs constitutes an infringement of copyright. Limitation: This drawing has been prepared on behalf of, and for the exclusive use of Jacobs' Client, and is subject to, and issued in accordance with, the provisions of the contract between Jacobs and the Client. Jacobs accepts no liability or responsibility whatsoever for, or in respect of, any use of, or reliance upon, this drawing by any third party.





- Legend**
- Proposed scheme (DMRB Stage 3 design)
  - SuDS
  - Noise and vibration calculation area
  - Noise and vibration study area
  - Baseline noise monitoring locations - sample receptors

- Do-Minimum Baseline Year Vs Do-Something Baseline Year (L<sub>A10,18hr</sub> Free-field) First Floor**  
**x = noise level**
- x ≥ 10 dB
  - 5 ≤ x < 10 dB
  - 3 ≤ x < 5 dB
  - 1 ≤ x < 3 dB
  - 0 < x < 1 dB
  - x = 0 dB
  - 1 < x < 0 dB
  - 3 < x ≤ -1 dB
  - 5 < x ≤ -3 dB
  - 10 < x ≤ -5 dB
  - x ≤ -10 dB

Rev.	Rev. Date	Purpose of revision	Orig/Dwn	Checkd	Rev'd	Apprv'd
0	JUL 2018	ES Publication		PM	AJ	BM

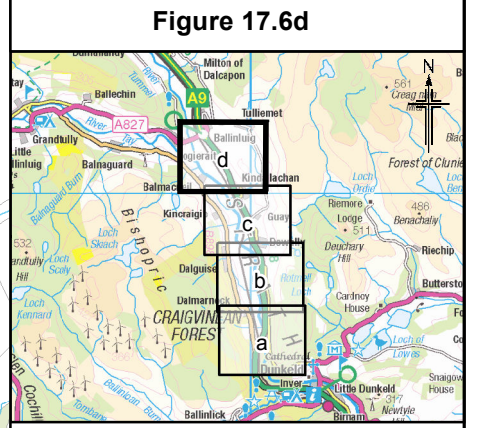
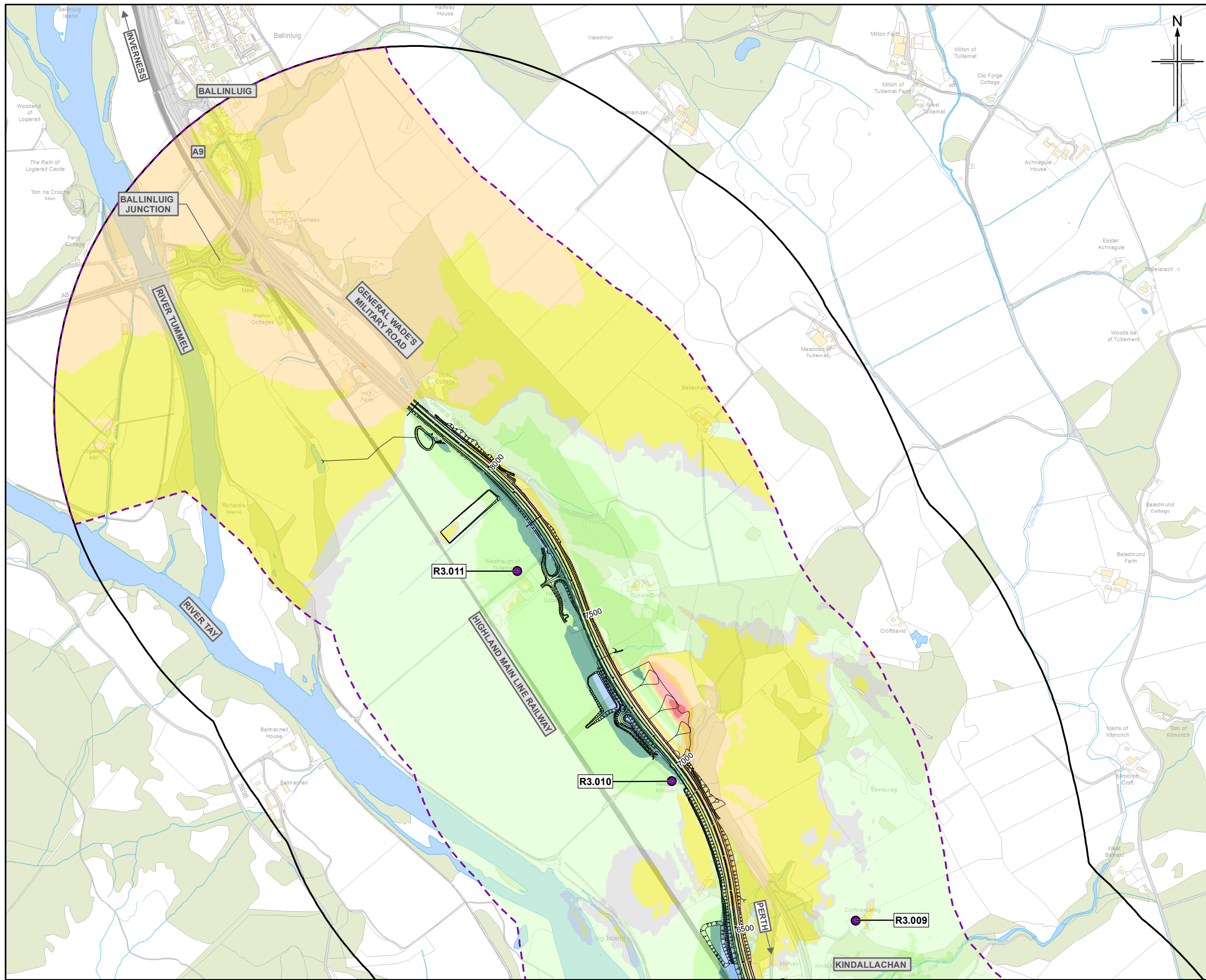
**JACOBS**  
 95 Bathwell Street, Glasgow, G2 7HX, UK.  
 Tel: +44(0)141 243 8000  
 www.jacobs.com

Client  
  
 TRANSPORT SCOTLAND  
 CÒRRAIDHAIL ALBA

Project  
  
**A9 DUALLING**  
 PERTH TO INVERNESS  
 Tay Crossing to Ballinluig

Drawing title  
**Environmental Statement**  
**Noise Level Difference Contour Map**  
**(First Floor) Do-Minimum Baseline Year**  
**Vs Do-Something Baseline Year**  
 Sheet 3 of 4

Drawing Status	FINAL
Scale	1:10,000 @ A3 DO NOT SCALE
Jacobs No.	B2140003
BIM No.	
Drawing number	Figure 17.6c
Rev	0



- Legend**
- Proposed scheme (DMRB Stage 3 design)
  - SuDS
  - Noise and vibration calculation area
  - Noise and vibration study area
  - Baseline noise monitoring locations - sample receptors

- Do-Minimum Baseline Year Vs Do-Something Baseline Year (L<sub>A10,18hr</sub> Free-field) First Floor**  
**x = noise level**
- $x \geq 10$  dB
  - $5 \leq x < 10$  dB
  - $3 \leq x < 5$  dB
  - $1 \leq x < 3$  dB
  - $0 < x < 1$  dB
  - $x = 0$  dB
  - $-1 < x < 0$  dB
  - $-3 < x \leq -1$  dB
  - $-5 < x \leq -3$  dB
  - $-10 < x \leq -5$  dB
  - $x \leq -10$  dB

Rev.	Rev. Date	Purpose of revision	Orig/Dwn	Checkd	Rev'd	Apprv'd
0	JUL 2018	ES Publication	PM	AJ	BM	AJG

**JACOBS**  
 95 Bathwell Street, Glasgow, G2 7HX, UK.  
 Tel: +44(0)141 243 8000  
 www.jacobs.com

Client  
  
 TRANSPORT SCOTLAND  
 COPHDHAIL ALBA

Project  
  
**A9 DUALLING**  
 PERTH TO INVERNESS  
 Tay Crossing to Ballinluig

Drawing title  
**Environmental Statement**  
**Noise Level Difference Contour Map**  
**(First Floor) Do-Minimum Baseline Year**  
**Vs Do-Something Baseline Year**  
 Sheet 4 of 4

Drawing Status	FINAL
Scale	1:10,000 @ A3 DO NOT SCALE
Jacobs No.	B2140003
BIM No.	
Drawing number	Figure 17.6d
Rev	0

© Copyright 2018 Jacobs U.K. Limited. The concepts and information contained in this document are the property of Jacobs. Use or copying of this document in whole or in part without the written permission of Jacobs constitutes an infringement of copyright. Limitation: This drawing has been prepared on behalf of, and for the exclusive use of Jacobs' Client, and is subject to, and issued in accordance with, the provisions of the contract between Jacobs and the Client. Jacobs accepts no liability or responsibility whatsoever for, or in respect of, any use of, or reliance upon, this drawing by any third party.

