

**Legend**

- Proposed scheme (DMRB Stage 3 design)
- SuDS
- Noise and vibration calculation area
- Noise and vibration study area
- Area of low noise road surfacing (LNRS)
- Noise mitigation barrier
- Baseline noise monitoring location

**Do-Minimum Baseline Year Vs Do-Something Future Assessment Year (with Mitigation) (LA<sub>10,18hr</sub> Free-field) Ground Floor**  
**x = noise level**

- $x \geq 10$  dB
- $5 \leq x < 10$  dB
- $3 \leq x < 5$  dB
- $0 < x < 3$  dB
- $x = 0$  dB
- $-3 < x < 0$  dB
- $-5 < x \leq -3$  dB
- $-10 < x \leq -5$  dB
- $x \leq -10$  dB

Rev.	Rev. Date	ES Publication	Purpose of revision	PM	AJ	BM	AJG
0	JUL 2018	ES Publication					

**JACOBS**  
 95 Botwell Street, Glasgow, G2 7HX, UK.  
 Tel: +44(0)141 243 8000  
 www.jacobs.com

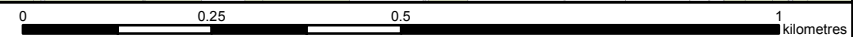
Client  
  
 TRANSPORT SCOTLAND  
 CÒRPHDHAIL ALBA

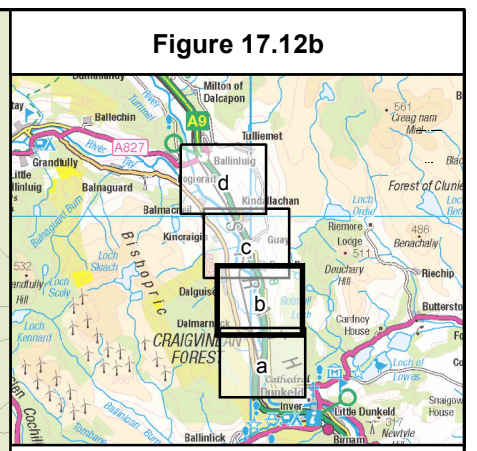
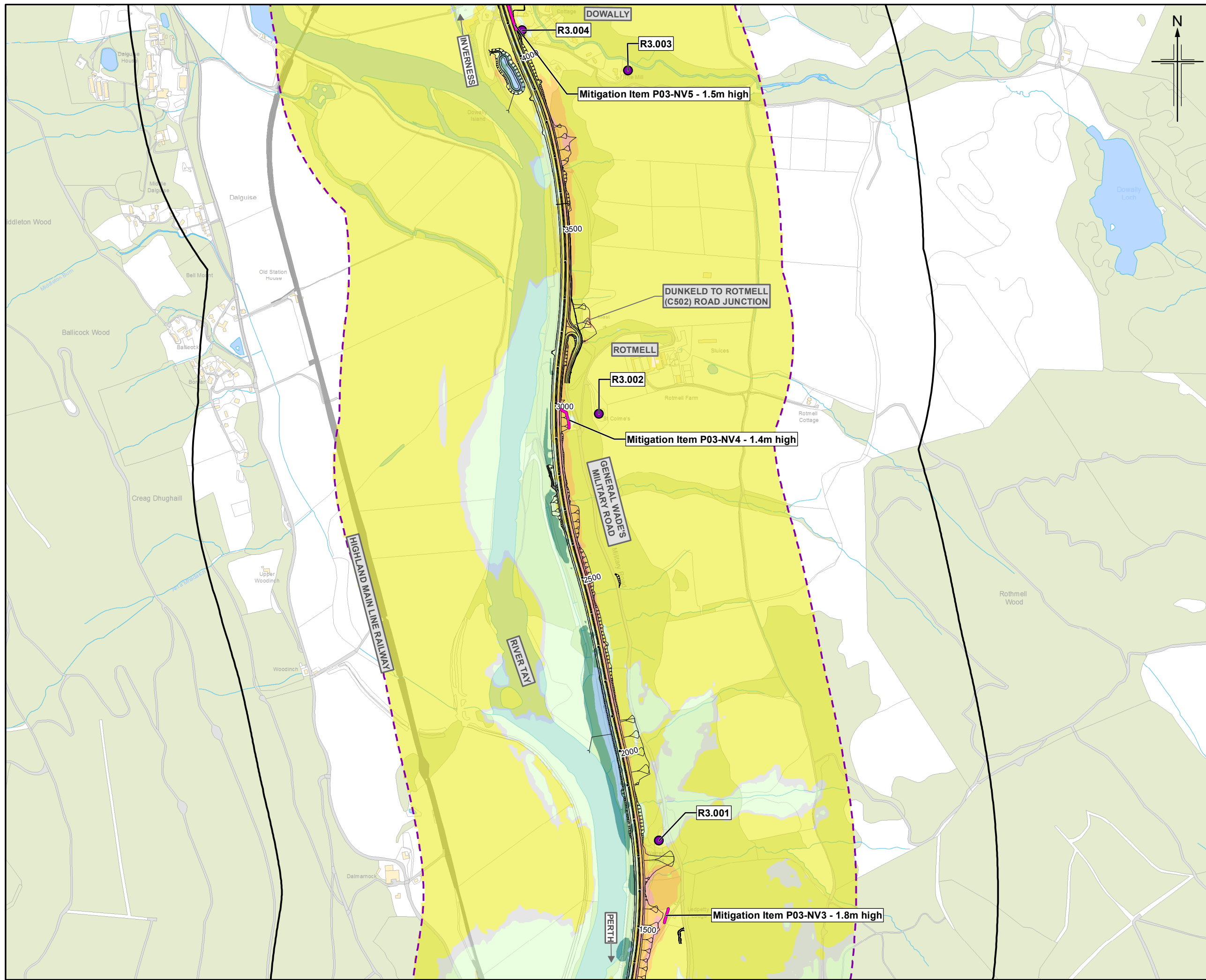
Project  
  
**A9**  
 DUALLING  
 PERTH TO INVERNESS  
 Tay Crossing to Ballinluig

Drawing title  
**Environmental Statement**  
**Noise Level Difference Contour Map**  
**(Ground Floor) Do-Minimum Baseline Year**  
**Vs Do-Something Future Assessment Year**  
**(With Mitigation)** Sheet 1 of 4

Drawing Status	FINAL		
Scale	1:10,000	@ A3	DO NOT SCALE
Jacobs No.	B2140003		
BIM No.			
Drawing number	Figure 17.12a		Rev 0

© Copyright 2018 Jacobs U.K. Limited. The concepts and information contained in this document are the property of Jacobs. Use or copying of this document in whole or in part without the written permission of Jacobs constitutes an infringement of copyright. Limitation: This drawing has been prepared on behalf of, and for the exclusive use of Jacobs' Client, and is subject to, and issued in accordance with, the provisions of the contract between Jacobs and the Client. Jacobs accepts no liability or responsibility whatsoever for, or in respect of, any use of, or reliance upon, this drawing by any third party.





**Legend**

- Proposed scheme (DMRB Stage 3 design)
- SuDS
- Noise and vibration calculation area
- Noise and vibration study area
- Area of low noise road surfacing (LNRS)
- Noise mitigation barrier
- Baseline noise monitoring location

**Do-Minimum Baseline Year Vs Do-Something Future Assessment Year (with Mitigation) (LA<sub>10,18hr</sub> Free-field) Ground Floor**  
 x = noise level

- x ≥ 10 dB
- 5 ≤ x < 10 dB
- 3 ≤ x < 5 dB
- 0 < x < 3 dB
- x = 0 dB
- 3 < x < 0 dB
- 5 < x ≤ -3 dB
- 10 < x ≤ -5 dB
- x ≤ -10 dB

Rev.	Rev. Date	ES Publication	PM	AJ	BM	AJG
0	JUL 2018	ES Publication				

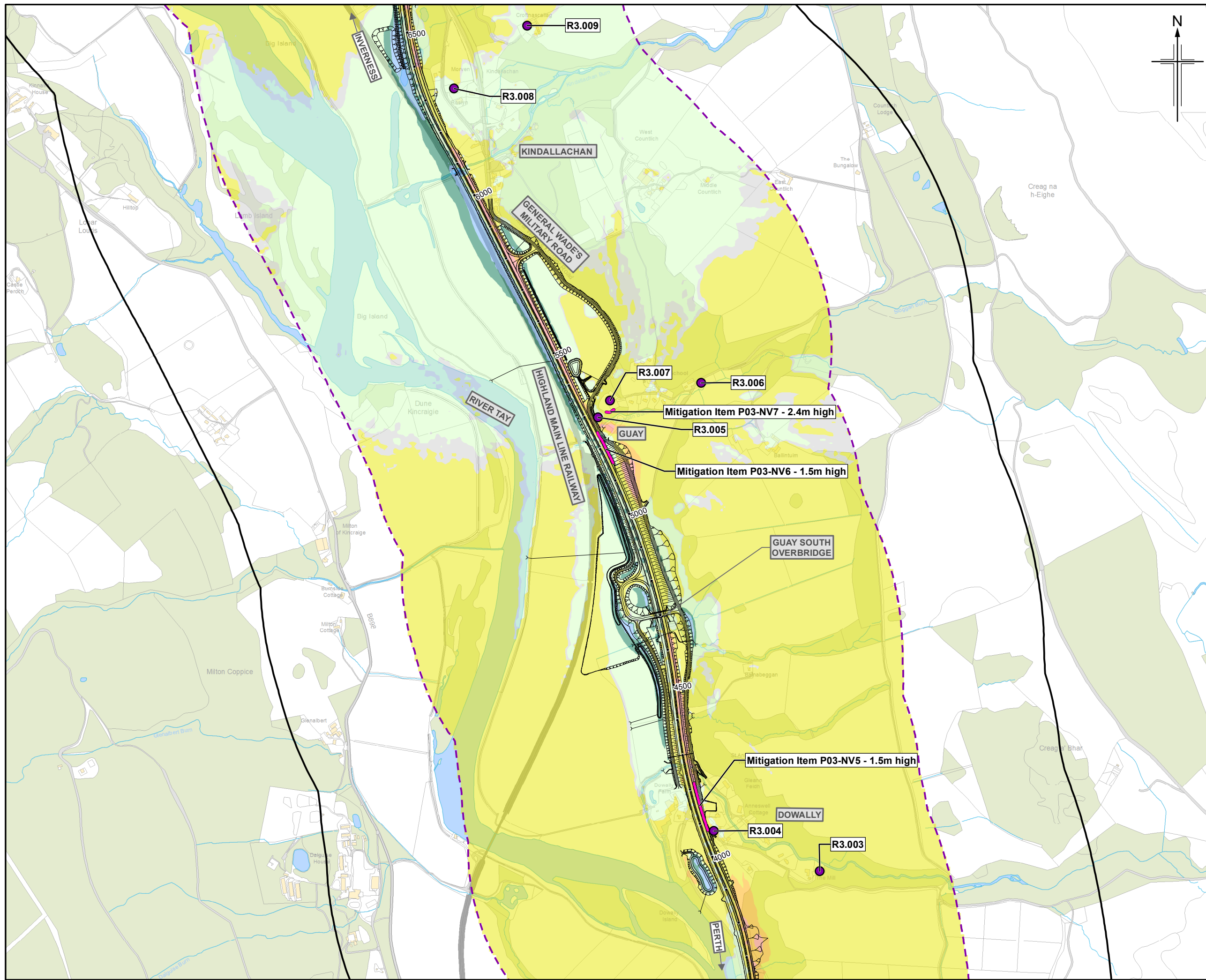
**JACOBS**  
 95 Bellfield Street, Glasgow, G2 7HX, UK.  
 Tel: +44(0)141 243 8000  
 www.jacobs.com

Client  
  
 TRANSPORT SCOTLAND  
 CÒRRAIDHAIL ALBA

Project  
  
 A9 DUALLING  
 PERTH TO INVERNESS  
 Tay Crossing to Ballinluig

Drawing title  
**Environmental Statement  
 Noise Level Difference Contour Map  
 (Ground Floor) Do-Minimum Baseline Year  
 Vs Do-Something Future Assessment Year  
 (With Mitigation)** Sheet 2 of 4

Drawing Status	FINAL		
Scale	1:10,000	@ A3	DO NOT SCALE
Jacobs No.	B2140003		
BIM No.			
Drawing number	Figure 17.12b		Rev 0



**Figure 17.12c**

**Legend**

- Proposed scheme (DMRB Stage 3 design)
- SuDS
- Noise and vibration calculation area
- Noise and vibration study area
- Area of low noise road surfacing (LNRS)
- Noise mitigation barrier
- Baseline noise monitoring location

**Do-Minimum Baseline Year Vs Do-Something Future Assessment Year (with Mitigation) (L<sub>A10,18hr</sub> Free-field) Ground Floor**  
 x = noise level

- x ≥ 10 dB
- 5 ≤ x < 10 dB
- 3 ≤ x < 5 dB
- 0 < x < 3 dB
- x = 0 dB
- 3 < x < 0 dB
- 5 < x ≤ -3 dB
- 10 < x ≤ -5 dB
- x ≤ -10 dB

Rev.	Rev. Date	ES Publication	PM	AJ	BM	AJG
0	JUL 2018	ES Publication				
Rev.	Rev. Date	Purpose of revision	Orig/Dwn	Check/Rev'd	Apprv'd	

**JACOBS**  
 95 Belford Street, Glasgow, G2 7HX, UK.  
 Tel: +44(0)141 243 8000  
 www.jacobs.com

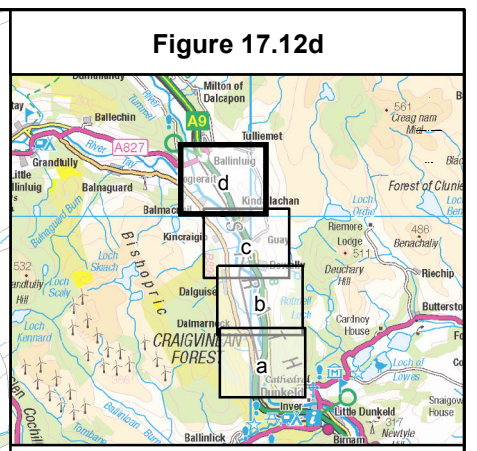
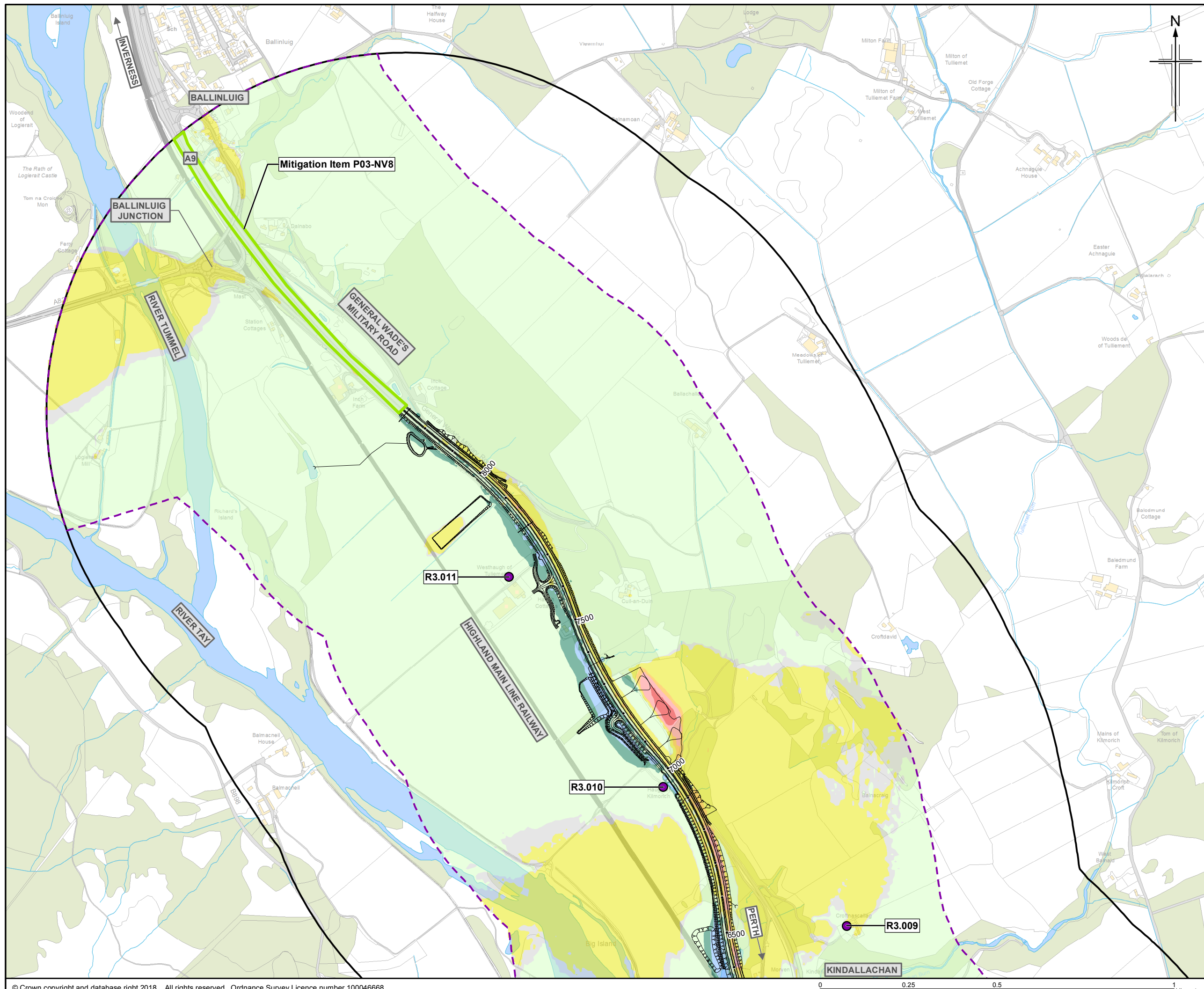
Client: **TRANSPORT SCOTLAND**  
 CÒRPHDHAIL ALBA

Project: **A9 DUALLING PERTH TO INVERNESS**  
 Tay Crossing to Ballinluig

Drawing title: **Environmental Statement Noise Level Difference Contour Map (Ground Floor) Do-Minimum Baseline Year Vs Do-Something Future Assessment Year (With Mitigation)** Sheet 3 of 4

Drawing Status	FINAL		
Scale	1:10,000	@ A3	DO NOT SCALE
Jacobs No.	B2140003		
BIM No.			
Drawing number	Figure 17.12c	Rev	0

© Copyright 2018 Jacobs U.K. Limited. The concepts and information contained in this document are the property of Jacobs. Use or copying of this document in whole or in part without the written permission of Jacobs constitutes an infringement of copyright. Limitation: This drawing has been prepared on behalf of, and for the exclusive use of Jacobs' Client, and is subject to, and issued in accordance with, the provisions of the contract between Jacobs and the Client. Jacobs accepts no liability or responsibility whatsoever for, or in respect of, any use of, or reliance upon, this drawing by any third party.



**Legend**

- Proposed scheme (DMRB Stage 3 design)
- SuDS
- Noise and vibration calculation area
- Noise and vibration study area
- Area of low noise road surfacing (LNRS)
- Noise mitigation barrier
- Baseline noise monitoring location

**Do-Minimum Baseline Year Vs Do-Something Future Assessment Year (with Mitigation)**  
 (LA10,18hr Free-field) Ground Floor  
 x = noise level

- x ≥ 10 dB
- 5 ≤ x < 10 dB
- 3 ≤ x < 5 dB
- 0 < x < 3 dB
- x = 0 dB
- 3 < x < 0 dB
- 5 < x ≤ -3 dB
- 10 < x ≤ -5 dB
- x ≤ -10 dB

0	JUL 2018	ES Publication	PM	AJ	BM	AJG
Rev.	Rev. Date	Purpose of revision	Orig/Dwn	Check/Rev'd	Apprv'd	

**JACOBS**  
 95 Belford Street, Glasgow, G2 7HX, UK.  
 Tel: +44(0)141 243 8000  
 www.jacobs.com

Client

TRANSPORT SCOTLAND  
 COIRIHDAIL ALBA

Project

**A9**  
 DUALLING  
 PERTH TO INVERNESS  
 Tay Crossing to Ballinluig

Drawing title

**Environmental Statement  
 Noise Level Difference Contour Map  
 (Ground Floor) Do-Minimum Baseline Year  
 Vs Do-Something Future Assessment Year  
 (With Mitigation)** Sheet 4 of 4

Drawing Status	FINAL		
Scale	1:10,000	@ A3	DO NOT SCALE
Jacobs No.	B2140003		
BIM No.			
Drawing number	Figure 17.12d		Rev 0