

For continuation see Figure 9.5b

Mixed woodland planting to replace existing vegetation lost due to the A9 southbound lane gain/drop. Existing vegetation to be retained where possible

For continuation see Figure 9.5e

Figure 9.5a

Legend

- Proposed Scheme (DMRB Stage 3 Design)
- A96 Dualling Inverness to Nairn (including Nairn Bypass) Scheme Proposals
- SuDS Wetlands
- Existing Vegetation to be Retained (inside draft CPO boundary and Scottish Ministers Land)
- Cross Section Locations (see Figure 9.6)
- Consented Development Under Construction (as of April 2019)

Landscape and Ecological Mitigation Proposals

- Landscape Planting Proposals
- Ecological Planting Proposals
- Ecological and Landscape Planting Proposals
- Mixed Woodland
- Riparian Woodland
- Scrub
- Individual Heavy Standard Trees
- Individual Feathered Trees
- Species Rich Grassland
- Wet Grassland Mix
- Visibility Splay Mix
- Hedgerow
- Bat Mitigation Area (woodland to be retained) for provision of boxes
- Dry Mammal Underpass
- Culvert with mammal provision
- Mammal Resistant Fencing

C00	SEPT 2019	EIAR Publication	MK/MS	KS	KL	DGC
Rev.	Rev. Date	Purpose of revision	Orig/Dwn	Check'd	Rev'd	Apprv'd

JACOBS
95 Bothwell Street, Glasgow, G2 7HX, UK
Tel: +44(0)141 243 8000
www.jacobs.com

Client: **TRANSPORT SCOTLAND**
CONTRAL ALBA

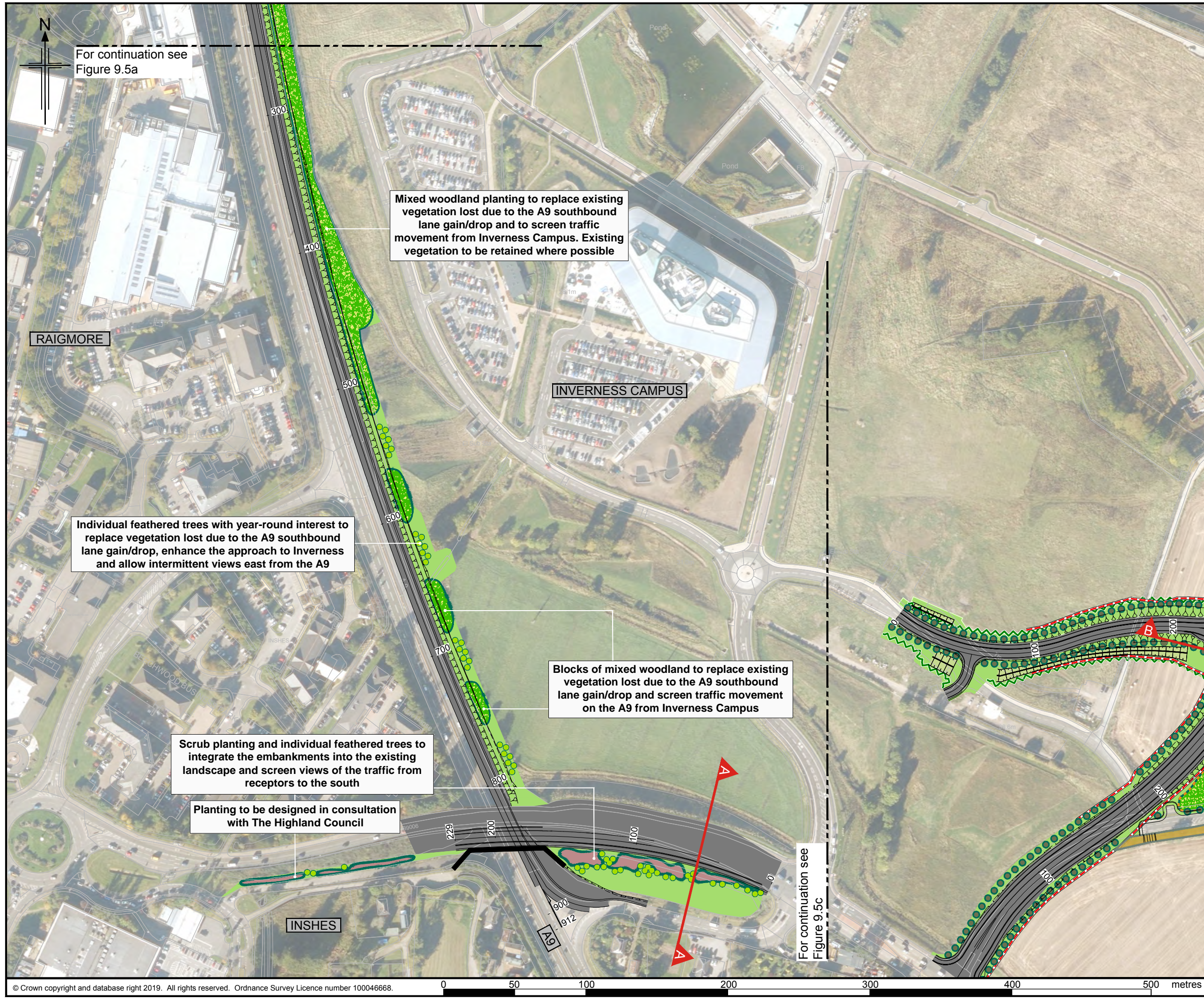
Project: **A9/A96 Inshes to Smithton**

Drawing title: **DMRB Stage 3 EIAR Landscape and Ecological Mitigation**

Sheet 1 of 7

Drawing Status	A - APPROVED AS STAGE COMPLETE	
Scale	1:2,500 @ A3	DO NOT SCALE
Jacobs No.	B2103501	
BIM No.	A9-A96IS-JAC-EGN-XXX-FG-EN-0906	
Drawing number	Figure 9.5a	Rev C00

© Copyright 2019 Jacobs U.K. Limited. The concepts and information contained in the document are the property of Jacobs. Use or copying of this document in whole or in part without the written permission of Jacobs constitutes an infringement of copyright. Limitation: This drawing has been prepared on behalf of, and for the exclusive use of Jacobs' Client, and is subject to, and issued in accordance with, the provisions of the contract between Jacobs and the Client. Jacobs accepts no liability or responsibility whatsoever for, or in respect of, any use of, or reliance upon, this drawing by any third party.



For continuation see Figure 9.5a

Mixed woodland planting to replace existing vegetation lost due to the A9 southbound lane gain/drop and to screen traffic movement from Inverness Campus. Existing vegetation to be retained where possible

Individual feathered trees with year-round interest to replace vegetation lost due to the A9 southbound lane gain/drop, enhance the approach to Inverness and allow intermittent views east from the A9

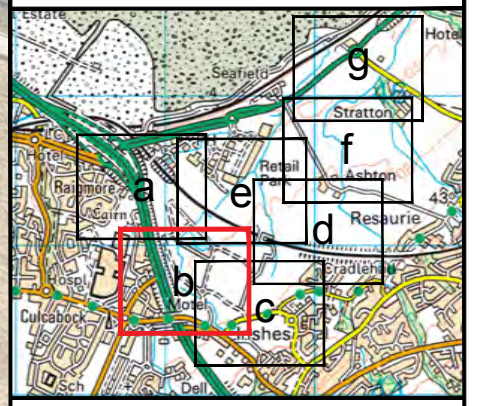
Blocks of mixed woodland to replace existing vegetation lost due to the A9 southbound lane gain/drop and screen traffic movement on the A9 from Inverness Campus

Scrub planting and individual feathered trees to integrate the embankments into the existing landscape and screen views of the traffic from receptors to the south

Planting to be designed in consultation with The Highland Council

For continuation see Figure 9.5c

Figure 9.5b



Legend

- Proposed Scheme (DMRB Stage 3 Design)
- A96 Dualling Inverness to Nairn (including Nairn Bypass) Scheme Proposals
- SuDS Wetlands
- Existing Vegetation to be Retained (inside draft CPO boundary and Scottish Ministers Land)
- Cross Section Locations (see Figure 9.6)
- Consented Development Under Construction (as of April 2019)

Landscape and Ecological Mitigation Proposals

- Landscape Planting Proposals
- Ecological Planting Proposals
- Ecological and Landscape Planting Proposals
- Mixed Woodland
- Riparian Woodland
- Scrub
- Individual Heavy Standard Trees
- Individual Feathered Trees
- Species Rich Grassland
- Wet Grassland Mix
- Visibility Splay Mix
- Hedgerow
- Bat Mitigation Area (woodland to be retained) for provision of boxes
- Dry Mammal Underpass
- Culvert with mammal provision
- Mammal Resistant Fencing

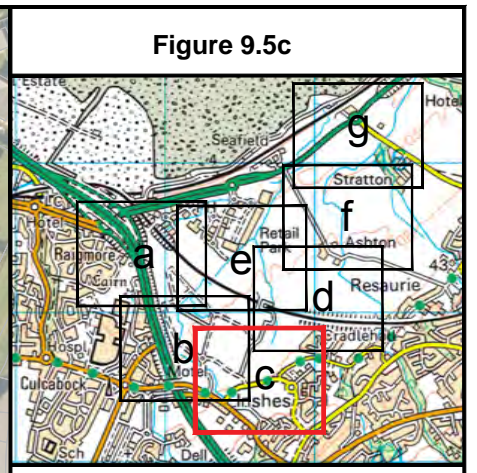
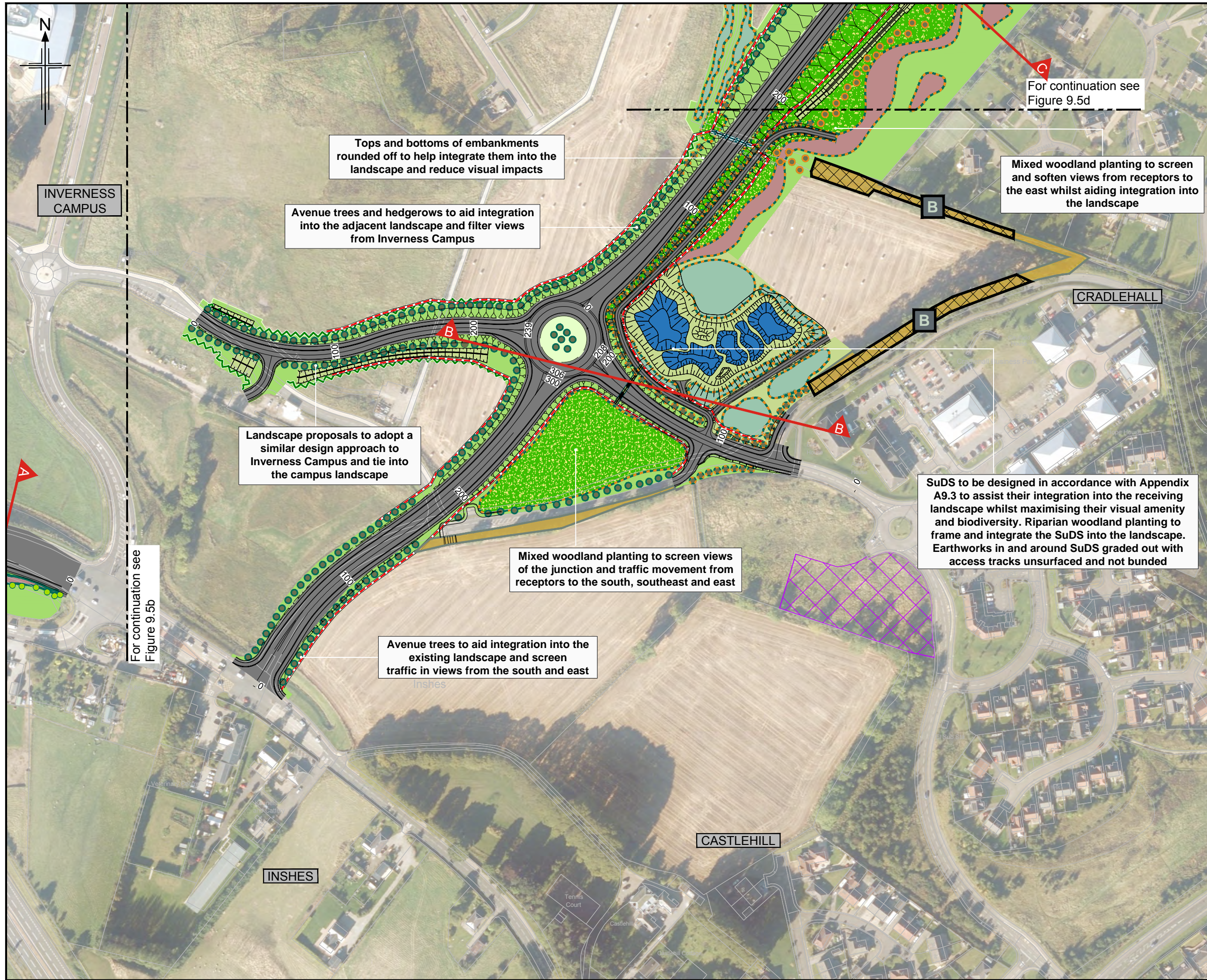
C00	SEPT 2019	EIAR Publication	MK/MS	KS	KL	DGC
Rev.	Rev. Date	Purpose of revision	Orig/Down	Check'd	Rev'd	Apprv'd



Client
A9/A96 Inshes to Smithton

Drawing title
**DMRB Stage 3 EIAR
Landscape and Ecological Mitigation**

Sheet 2 of 7		
Drawing Status	A - APPROVED AS STAGE COMPLETE	
Scale	1:2,500 @ A3	DO NOT SCALE
JACOBS No.	B2103501	
BIM No.	A9-A96IS-JAC-EGN-XXX-FG-EN-0907	
Drawing number	Figure 9.5b	Rev C00



Legend

- Proposed Scheme (DMRB Stage 3 Design)
- A96 Dualling Inverness to Nairn (including Nairn Bypass) Scheme Proposals
- SuDS Wetlands
- Existing Vegetation to be Retained (inside draft CPO boundary and Scottish Ministers Land)
- Cross Section Locations (see Figure 9.6)
- Consented Development Under Construction (as of April 2019)

Landscape and Ecological Mitigation Proposals

- Landscape Planting Proposals
- Ecological Planting Proposals
- Ecological and Landscape Planting Proposals
- Mixed Woodland
- Riparian Woodland
- Scrub
- Individual Heavy Standard Trees
- Individual Feathered Trees
- Species Rich Grassland
- Wet Grassland Mix
- Visibility Splay Mix
- Hedgerow
- Bat Mitigation Area (woodland to be retained) for provision of boxes
- Dry Mammal Underpass
- Culvert with mammal provision
- Mammal Resistant Fencing

Rev.	Rev. Date	Purpose of revision	Orig/Dwn	Check'd	Rev'd	Apprv'd
C00	SEPT 2019	EIAR Publication	MK/MS	KS	KL	DGC

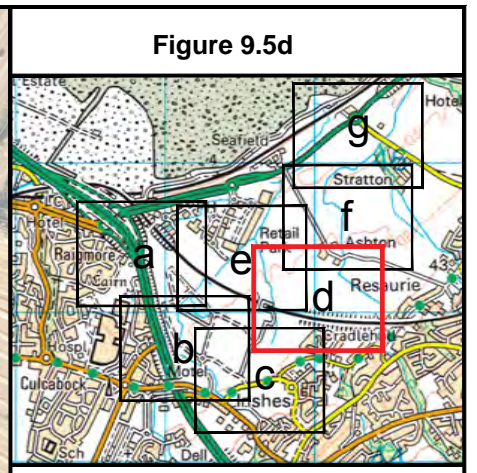
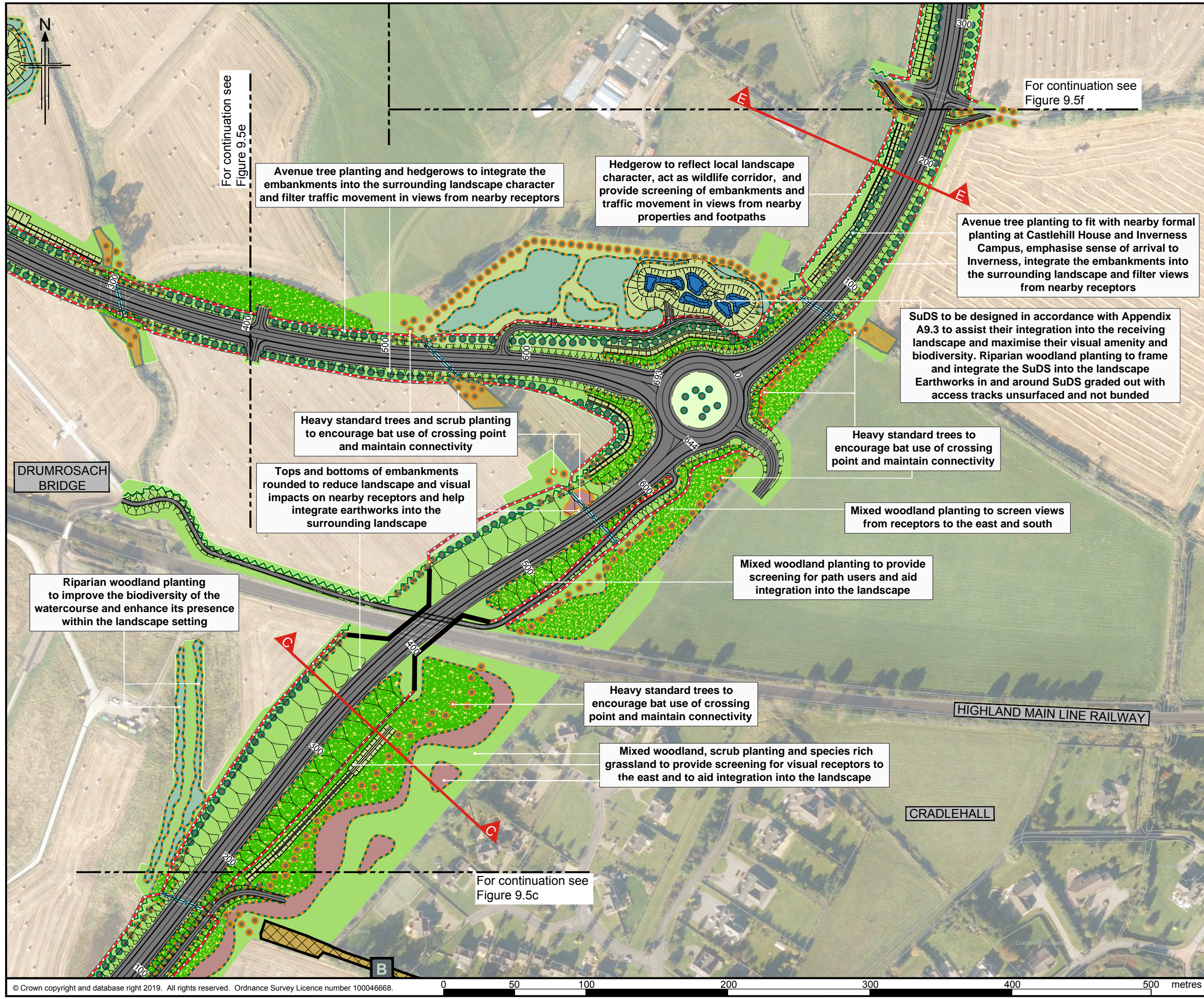
JACOBS
 95 Bothwell Street, Glasgow, G2 7HX, UK
 Tel: +44(0)141 243 8000
 www.jacobs.com



Client: **TRANSPORT SCOTLAND**
 Project: **A9/A96 Inshes to Smithton**

Drawing title: **DMRB Stage 3 EIAR Landscape and Ecological Mitigation**
 Sheet 3 of 7

Drawing Status	A - APPROVED AS STAGE COMPLETE
Scale	1:2,500 @ A3 DO NOT SCALE
Jacobs No.	B2103501
BIM No.	A9-A96IS-JAC-EGN-XXX-FG-EN-0908
Drawing number	Figure 9.5c
Rev	C00



Legend

- Proposed Scheme (DMRB Stage 3 Design)
- A96 Dualling Inverness to Nairn (including Nairn Bypass) Scheme Proposals
- SuDS Wetlands
- Existing Vegetation to be Retained (inside draft CPO boundary and Scottish Ministers Land)
- Cross Section Locations (see Figure 9.6)
- Consented Development Under Construction (as of April 2019)

Landscape and Ecological Mitigation Proposals

- Landscape Planting Proposals
- Ecological Planting Proposals
- Ecological and Landscape Planting Proposals
- Mixed Woodland
- Riparian Woodland
- Scrub
- Individual Heavy Standard Trees
- Individual Feathered Trees
- Species Rich Grassland
- Wet Grassland Mix
- Visibility Splay Mix
- Hedgerow
- Bat Mitigation Area (woodland to be retained) for provision of boxes
- Dry Mammal Underpass
- Culvert with mammal provision
- Mammal Resistant Fencing

COO	SEPT 2019	IAIR Publication	MK/MS	KS	KL	DGC
Rev.	Rev. Date	Purpose of revision	Orig/Dwn	Check'd	Rev'd	Apprv'd

JACOBS
95 Bothwell Street, Glasgow, G2 7HX, UK
Tel: +44(0)141 243 8000
www.jacobs.com

Client: **TRANSPORT SCOTLAND**
CONTRAL ALBA

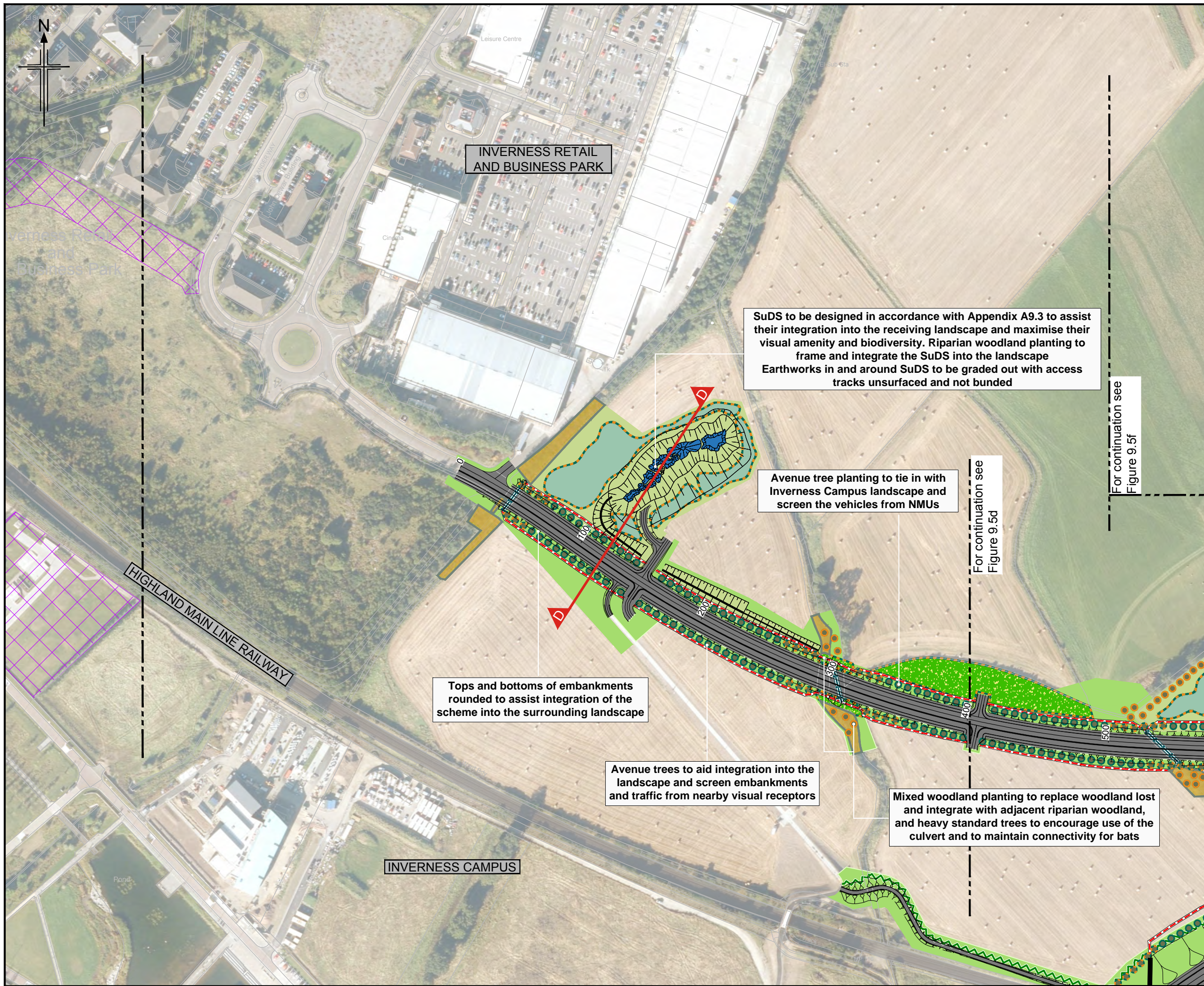
Project: **A9/A96 Inshes to Smithton**

Drawing title: **DMRB Stage 3 EIAR Landscape and Ecological Mitigation**

Sheet 4 of 7

Drawing Status	A - APPROVED AS STAGE COMPLETE	
Scale	1:2,500 @ A3	DO NOT SCALE
Jacobs No.	B2103501	
BIM No.	A9-A96IS-JAC-EGN-XXX-FG-EN-0909	
Drawing number	Figure 9.5d	Rev C00

© Copyright 2019 Jacobs U.K. Limited. The concepts and information contained in the document are the property of Jacobs. Use or copying of this document in whole or in part without the written permission of Jacobs constitutes an infringement of copyright. Limitation: This drawing has been prepared on behalf of, and for the exclusive use of Jacobs' Client, and is subject to, and issued in accordance with, the provisions of the contract between Jacobs and the Client. Jacobs accepts no liability or responsibility whatsoever for, or in respect of, any use of, or reliance upon, this drawing by any third party.



INVERNESS RETAIL AND BUSINESS PARK

SuDS to be designed in accordance with Appendix A9.3 to assist their integration into the receiving landscape and maximise their visual amenity and biodiversity. Riparian woodland planting to frame and integrate the SuDS into the landscape
Earthworks in and around SuDS to be graded out with access tracks unsurfaced and not bunded

Avenue tree planting to tie in with Inverness Campus landscape and screen the vehicles from NMUs

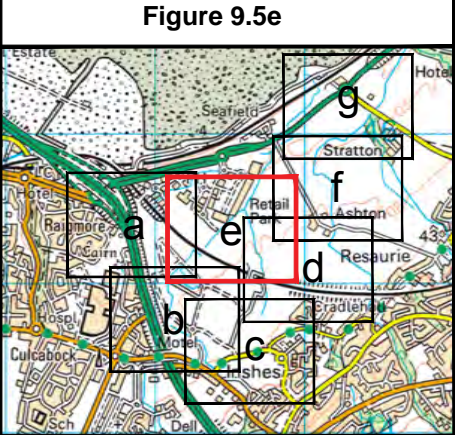
Tops and bottoms of embankments rounded to assist integration of the scheme into the surrounding landscape

Avenue trees to aid integration into the landscape and screen embankments and traffic from nearby visual receptors

Mixed woodland planting to replace woodland lost and integrate with adjacent riparian woodland, and heavy standard trees to encourage use of the culvert and to maintain connectivity for bats

INVERNESS CAMPUS

HIGHLAND MAIN LINE RAILWAY



Legend

- Proposed Scheme (DMRB Stage 3 Design)
- A96 Dualling Inverness to Nairn (including Nairn Bypass) Scheme Proposals
- SuDS Wetlands
- Existing Vegetation to be Retained (inside draft CPO boundary and Scottish Ministers Land)
- Cross Section Locations (see Figure 9.6)
- Consented Development Under Construction (as of April 2019)

Landscape and Ecological Mitigation Proposals

- Landscape Planting Proposals
- Ecological Planting Proposals
- Ecological and Landscape Planting Proposals
- Mixed Woodland
- Riparian Woodland
- Scrub
- Individual Heavy Standard Trees
- Individual Feathered Trees
- Species Rich Grassland
- Wet Grassland Mix
- Visibility Splay Mix
- Hedgerow
- Bat Mitigation Area (woodland to be retained) for provision of boxes
- Dry Mammal Underpass
- Culvert with mammal provision
- Mammal Resistant Fencing

C00	SEPT 2019	EIAR Publication	MK/MS	KS	KL	DGC
Rev.	Rev. Date	Purpose of revision	Orig/Dwn	Check'd	Rev'd	Apprv'd

JACOBS
95 Botwell Street, Glasgow, G2 7HX, UK
Tel: +44(0)141 243 8000
www.jacobs.com

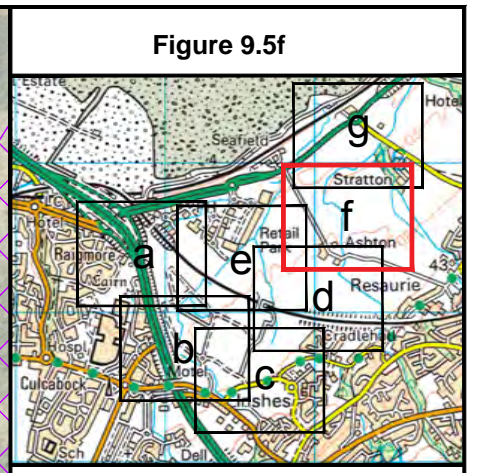
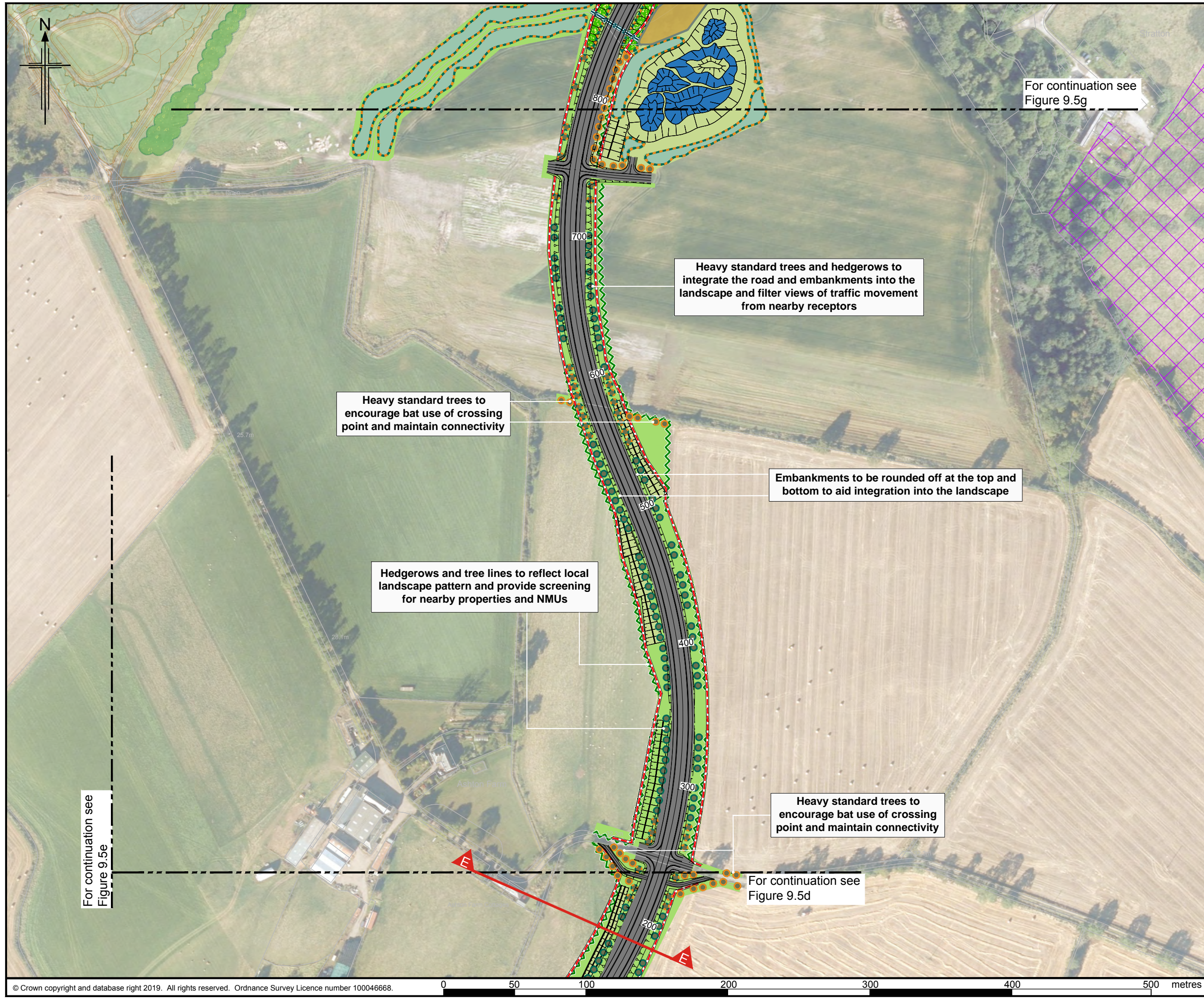
Client: **TRANSPORT SCOTLAND**
CONTRACT ALBA

Project: **A9/A96 Inshes to Smithton**

Drawing title: **DMRB Stage 3 EIAR Landscape and Ecological Mitigation**

Sheet 5 of 7

Drawing Status	A - APPROVED AS STAGE COMPLETE
Scale	1:2,500 @ A3 DO NOT SCALE
Jacobs No.	B2103501
BIM No.	A9-A96IS-JAC-EGN-XXX-FG-EN-0910
Drawing number	Figure 9.5e
Rev	C00



Legend

- Proposed Scheme (DMRB Stage 3 Design)
- A96 Dualling Inverness to Nairn (including Nairn Bypass) Scheme Proposals
- SuDS Wetlands
- Existing Vegetation to be Retained (inside draft CPO boundary and Scottish Ministers Land)
- Cross Section Locations (see Figure 9.6)
- Consented Development Under Construction (as of April 2019)

Landscape and Ecological Mitigation Proposals

- Landscape Planting Proposals
- Ecological Planting Proposals
- Ecological and Landscape Planting Proposals
- Mixed Woodland
- Riparian Woodland
- Scrub
- Individual Heavy Standard Trees
- Individual Feathered Trees
- Species Rich Grassland
- Wet Grassland Mix
- Visibility Splay Mix
- Hedgerow
- Bat Mitigation Area (woodland to be retained) for provision of boxes
- Dry Mammal Underpass
- Culvert with mammal provision
- Mammal Resistant Fencing

Rev.	Rev. Date	Purpose of revision	Orig/Dwn	Check'd	Rev'd	Apprv'd
C00	SEPT 2019	EAIR Publication	MK/MS	KS	KL	DGC

JACOBS
 95 Bothwell Street, Glasgow, G2 7HX, UK
 Tel: +44(0)141 243 8000
 www.jacobs.com

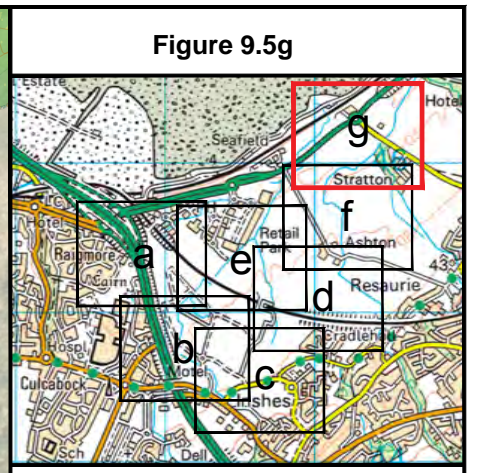
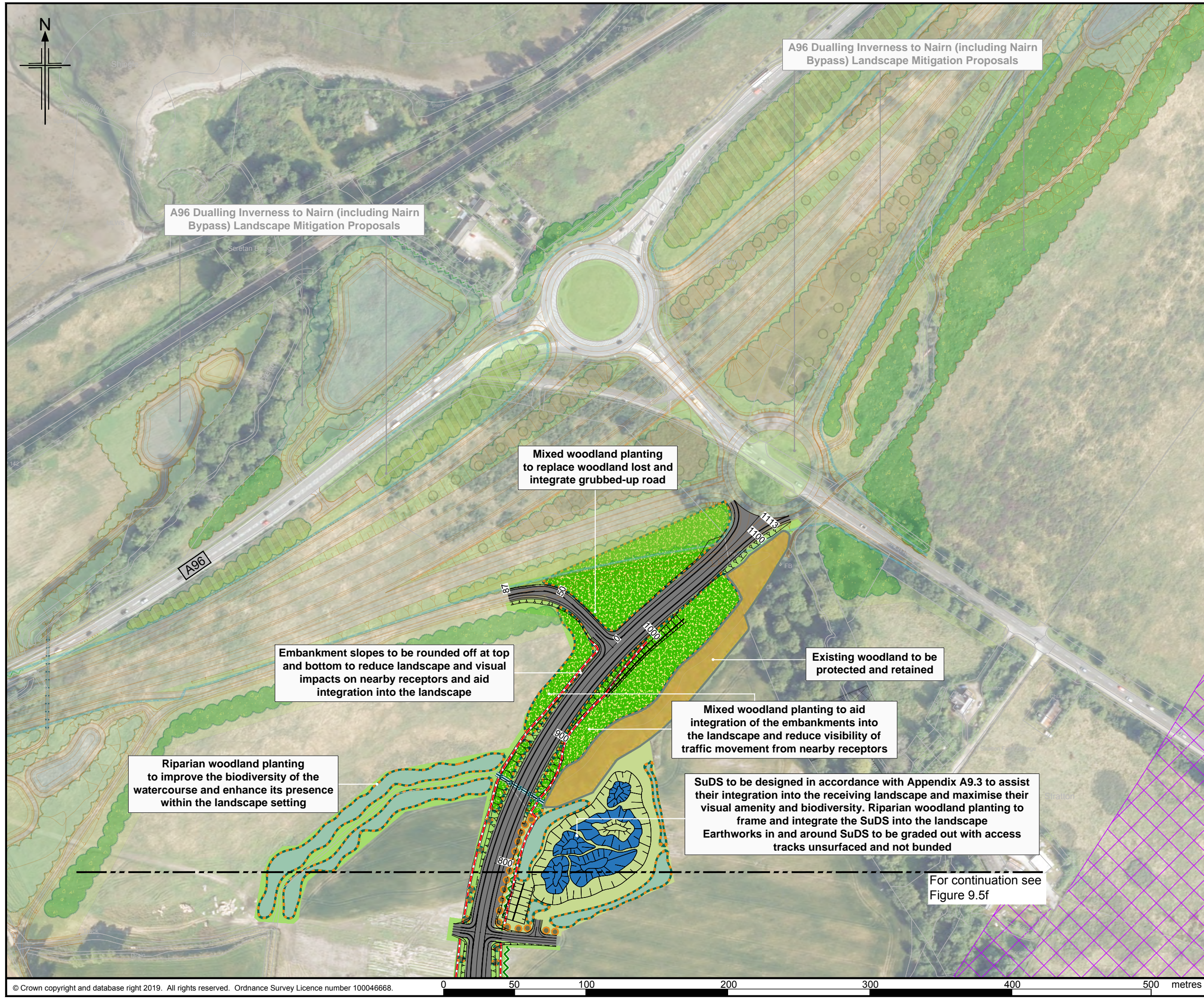


Client: **TRANSPORT SCOTLAND**
 Project: **A9/A96 Inshes to Smithton**

Drawing title: **DMRB Stage 3 EAIR Landscape and Ecological Mitigation**
 Sheet 6 of 7

Drawing Status	A - APPROVED AS STAGE COMPLETE	
Scale	1:2,500 @ A3	DO NOT SCALE
Jacobs No.	B2103501	
BIM No.	A9-A96IS-JAC-EGN-XXX-FG-EN-0911	
Drawing number	Figure 9.5f	Rev C00

© Copyright 2019 Jacobs U.K. Limited. The concepts and information contained in the document are the property of Jacobs. Use or copying of this document in whole or in part without the written permission of Jacobs constitutes an infringement of copyright. Limitation: This drawing has been prepared on behalf of, and for the exclusive use of Jacobs' Client, and is subject to, and issued in accordance with, the provisions of the contract between Jacobs and the Client. Jacobs accepts no liability or responsibility whatsoever for, or in respect of, any use of, or reliance upon, this drawing by any third party.



Legend

- Proposed Scheme (DMRB Stage 3 Design)
- A96 Dualling Inverness to Nairn (including Nairn Bypass) Scheme Proposals
- SuDS Wetlands
- Existing Vegetation to be Retained (inside draft CPO boundary and Scottish Ministers Land)
- Cross Section Locations (see Figure 9.6)
- Consented Development Under Construction (as of April 2019)

Landscape and Ecological Mitigation Proposals

- Landscape Planting Proposals
- Ecological Planting Proposals
- Ecological and Landscape Planting Proposals
- Mixed Woodland
- Riparian Woodland
- Scrub
- Individual Heavy Standard Trees
- Individual Feathered Trees
- Species Rich Grassland
- Wet Grassland Mix
- Visibility Splay Mix
- Hedgerow
- Bat Mitigation Area (woodland to be retained) for provision of boxes
- Dry Mammal Underpass
- Culvert with mammal provision
- Mammal Resistant Fencing

C00	SEPT 2019	EIAR Publication	MK/MS	KS	KL	DGC
Rev.	Rev. Date	Purpose of revision	Orig/Dwn	Check'd	Rev'd	Apprv'd

JACOBS
95 Bothwell Street, Glasgow, G2 7HX, UK
Tel: +44(0)141 243 8000
www.jacobs.com

Client: **TRANSPORT SCOTLAND**
CONTRAL ALBA

Project: **A9/A96 Inshes to Smithton**

Drawing title: **DMRB Stage 3 EIAR Landscape and Ecological Mitigation**

Sheet 7 of 7

Drawing Status	A - APPROVED AS STAGE COMPLETE	
Scale	1:2,500 @ A3	DO NOT SCALE
Jacobs No.	B2103501	
BIM No.	A9-A96IS-JAC-EGN-XXX-FG-EN-0912	
Drawing number	Figure 9.5g	Rev C00

© Copyright 2019 Jacobs U.K. Limited. The concepts and information contained in the document are the property of Jacobs. Use or copying of this document in whole or in part without the written permission of Jacobs constitutes an infringement of copyright. Limitation: This drawing has been prepared on behalf of, and for the exclusive use of Jacobs' Client, and is subject to, and issued in accordance with, the provisions of the contract between Jacobs and the Client. Jacobs accepts no liability or responsibility whatsoever for, or in respect of, any use of, or reliance upon, this drawing by any third party.