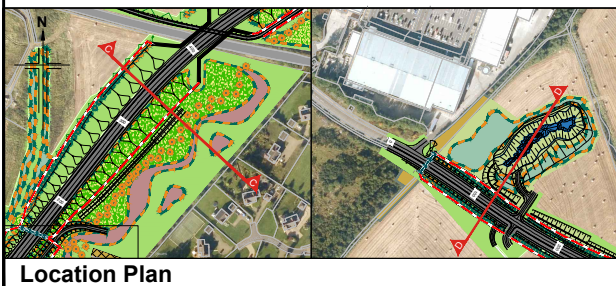


Section C-C
ch340 of Cradlehall Roundabout to Eastfield Way Roundabout (Link 2)



Section D-D
ch120 of Eastfield Way Roundabout to Inverness Retail and Business Park (Link 3)



Legend

———— Proposed Profile
- - - - Existing Profile

For locations of Cross Sections and details of the landscape and ecological mitigation measures refer to Figure 9.5

Notes:

- Proposed planting is shown at a height anticipated in summer 15 years after opening. Heights are indicative and dependent on species and a range of environmental factors.
- At this stage the SuDS locations and mitigation proposals remain preliminary.

C00	SEPT 2019	EIAR Publication	MS	KS	KL	DGC
Rev	Rev. Date	Purpose of revision	Drawn	Checked	Rev'd	Apprv'd

JACOBS
95 Bothwell St, Glasgow, G2 7HX, UK.
Tel: +44(0)141 243 8000
www.jacobs.com

This drawing is not to be used in whole or part other than for the intended purpose and project as defined on this drawing. Refer to the contract for full terms and conditions.

Client



Project

A9/A96 Inshes to Smithton

Drawing title

**DMRB Stage 3 EIAR
Cross Section C-C and D-D**

Sheet 2 of 3

Drawing status: **A - APPROVED AS STAGE COMPLETE**

Scale: **NTS @ A3** | **DO NOT SCALE**

Jacobs No.: **B2103501**

BIM no.: **A9-A96IS-JAC-EGN-XXX-FG-EN-0914**

Drawing number: **Figure 9.6b** | Rev: **C00**