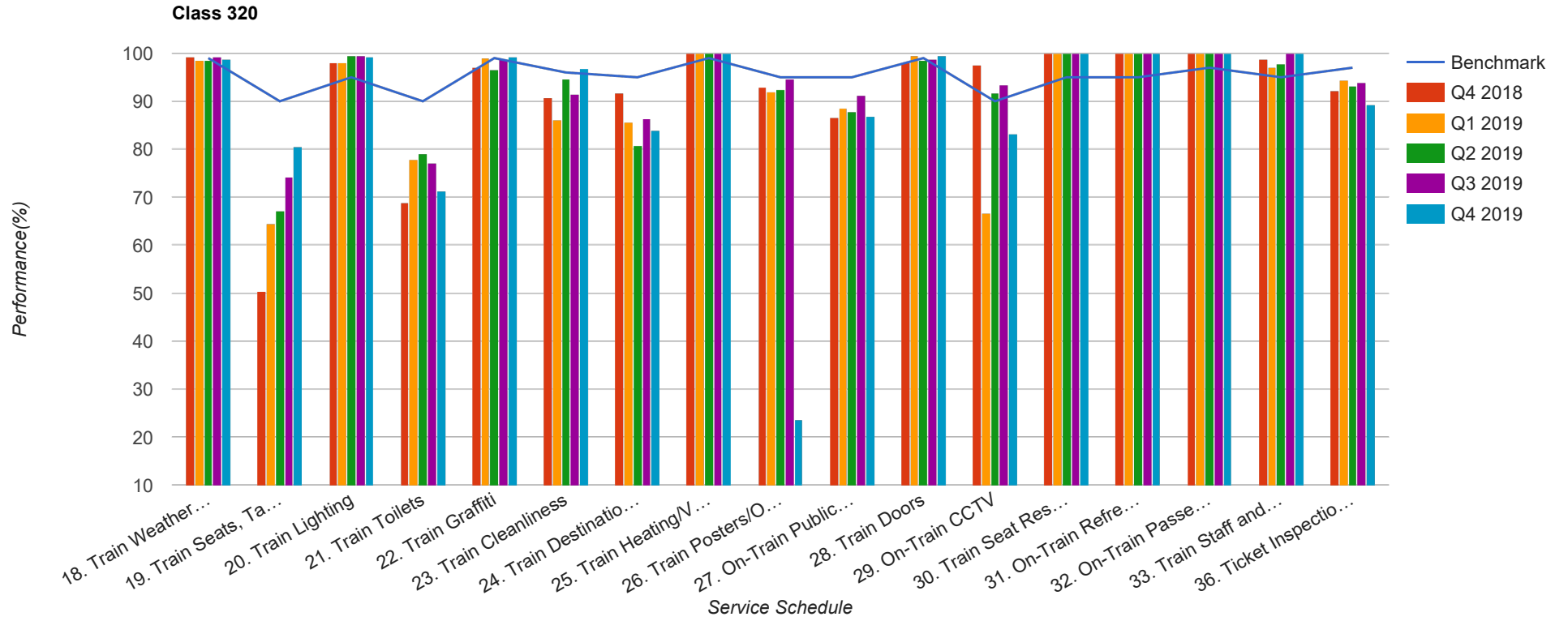


Quarter 4 2018 - Quarter 4 2019  
Scotrail



Table

Service Schedule	Benchmark	Q4 2018	Q1 2019	Q2 2019	Q3 2019	Q4 2019
18. Train Weather and Wind Proofing	99	99.26	98.57	98.48	99.19	98.82
19. Train Seats, Tables, Racks and other Passenger Facilities	90	50.37	64.52	67.12	74.1	80.49
20. Train Lighting	95	98.13	98.1	99.62	99.6	99.22
21. Train Toilets	90	68.89	77.94	79.07	77.22	71.25
22. Train Graffiti	99	97.01	99.05	96.59	98.79	99.22
23. Train Cleanliness	96	90.67	86.19	94.7	91.53	96.86
24. Train Destination Boards and Passenger	95	91.79	85.71	80.68	86.29	83.92
25. Train Heating/Ventilation	99	100	100	100	100	100
26. Train Posters/On Train Information	95	92.91	91.9	92.42	94.76	23.53
27. On-Train Public Address	95	86.57	88.57	87.79	91.13	86.96
28. Train Doors	99	98.15	99.52	98.48	98.8	99.61
29. On-Train CCTV	90	97.62	66.67	91.67	93.33	83.33
30. Train Seat Reservation System	95	100	100	100	100	100
31. On-Train Refreshment and Food Facilities	95	100	100	100	100	100
32. On-Train Passenger Entertainment Systems and WiFi	97	100	100	100	100	100
33. Train Staff and Customer Care	95	98.89	97.14	97.73	100	100
36. Ticket Inspection on Trains	97	92.22	94.29	93.18	93.98	89.41