

Figure 3a: Edinburgh: 2018 Baseline Roadside NO₂ Concentrations with AQMA boundaries and SIMD 20% Most Deprived Zones



2018 Baseline Roadside NO₂ Concentrations (µg m⁻³)

- ≤10
- ≤20
- ≤30
- ≤40
- ≤50
- ≤60
- >60

SIMD 2020 - 20% Most Deprived Zones

Local Authority Boundaries

Air Quality Management Areas

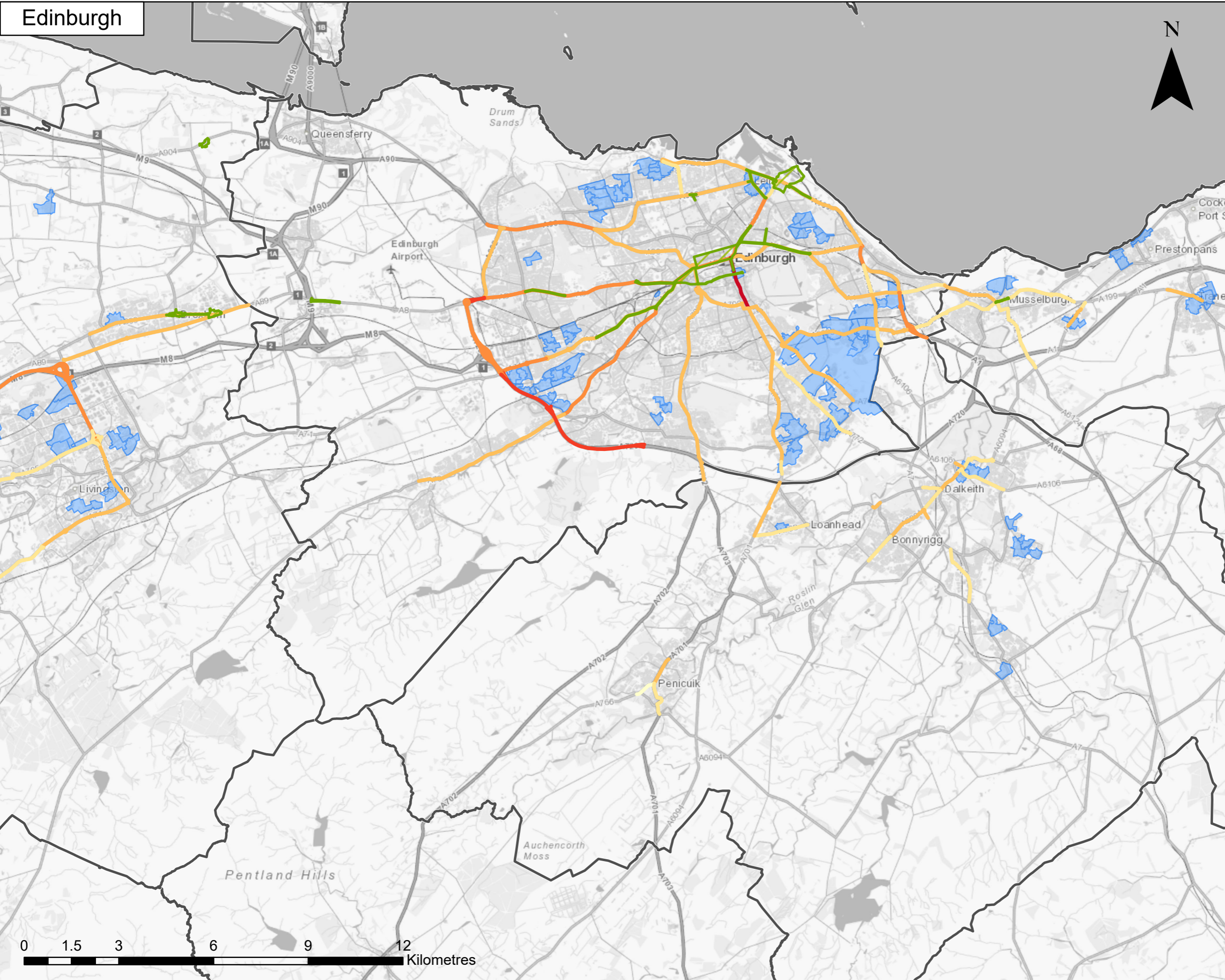
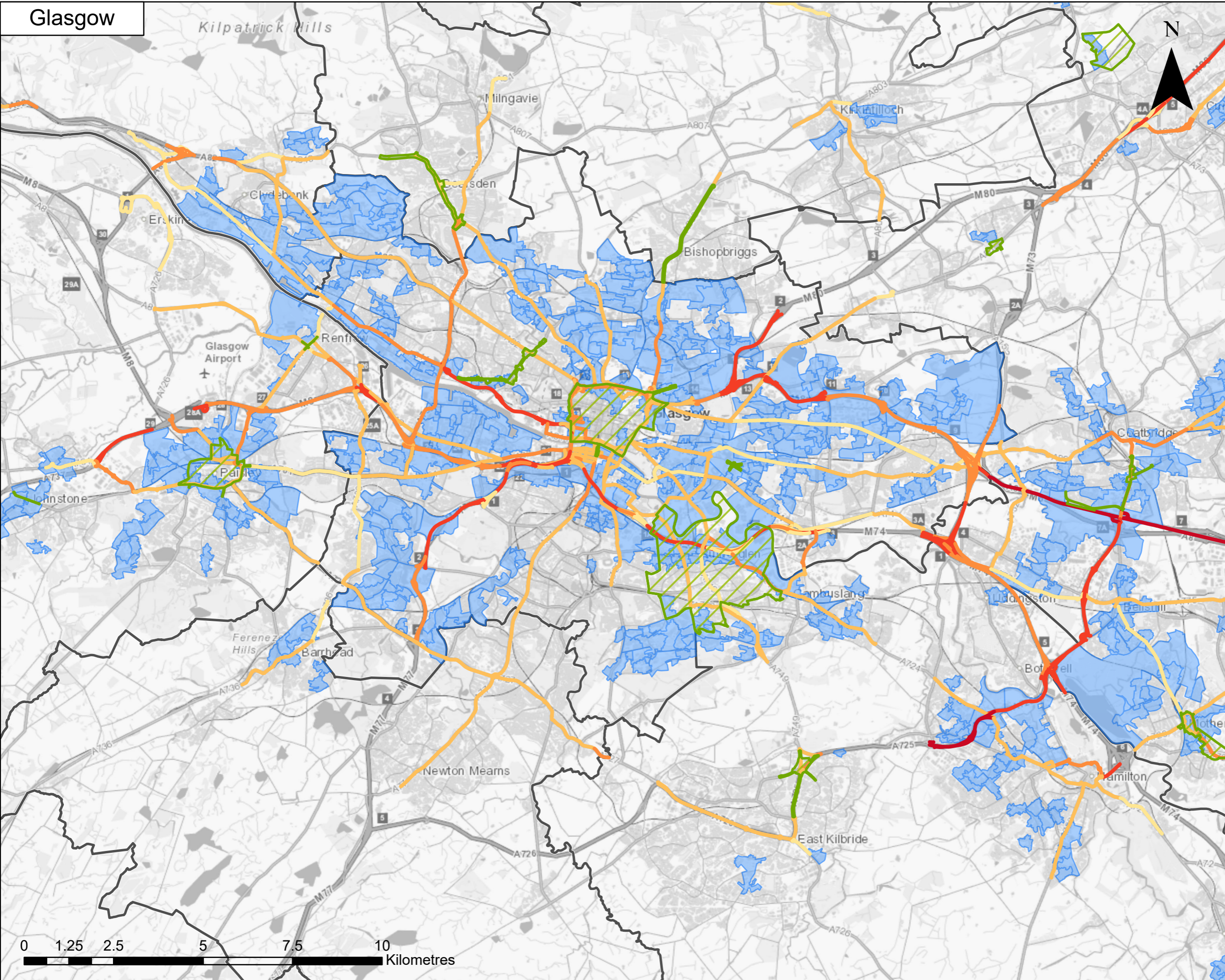


Figure 3b: Glasgow: 2018 Baseline Roadside NO₂ Concentrations with AQMA boundaries and SIMD 20% Most Deprived Zones



2018 Baseline Roadside NO₂ Concentrations (µg m⁻³)

- ≤10
- ≤20
- ≤30
- ≤40
- ≤50
- ≤60
- >60

SIMD 2020 - 20% Most Deprived Zones

- Blue shaded area

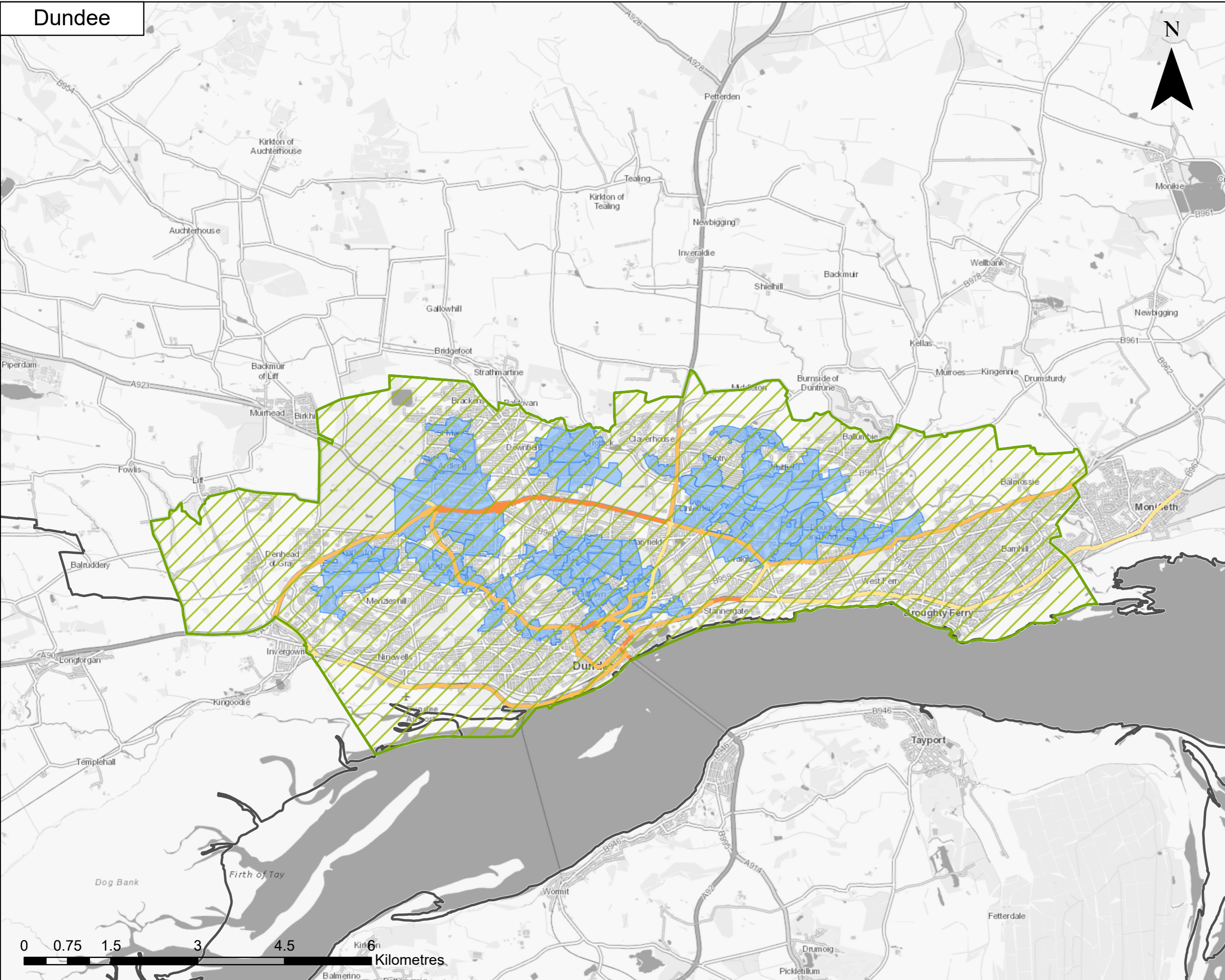
Local Authority Boundaries

- Black line

Air Quality Management Areas

- Green hatched area

Figure 3c: Dundee: 2018 Baseline Roadside NO₂ Concentrations with AQMA boundaries and SIMD 20% Most Deprived Zones



2018 Baseline Roadside NO₂ Concentrations (µg m⁻³)

- ≤10
- ≤20
- ≤30
- ≤40
- ≤50
- ≤60
- >60

SIMD 2020 - 20% Most Deprived Zones

- Local Authority Boundaries
- Air Quality Management Areas

Aberdeen

Figure 3d: Aberdeen: 2018 Baseline Roadside NO₂ Concentrations with AQMA boundaries and SIMD 20% Most Deprived Zones



2018 Baseline Roadside NO₂ Concentrations (µg m⁻³)

- ≤10
- ≤20
- ≤30
- ≤40
- ≤50
- ≤60
- >60

SIMD 2020 - 20% Most Deprived Zones

- Local Authority Boundaries
- Air Quality Management Areas

