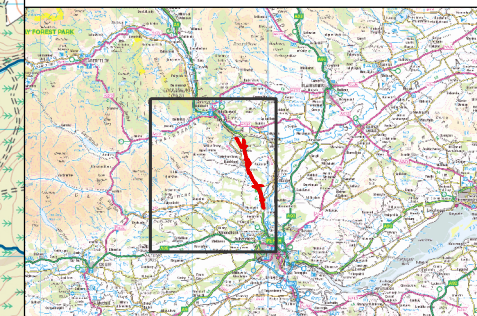
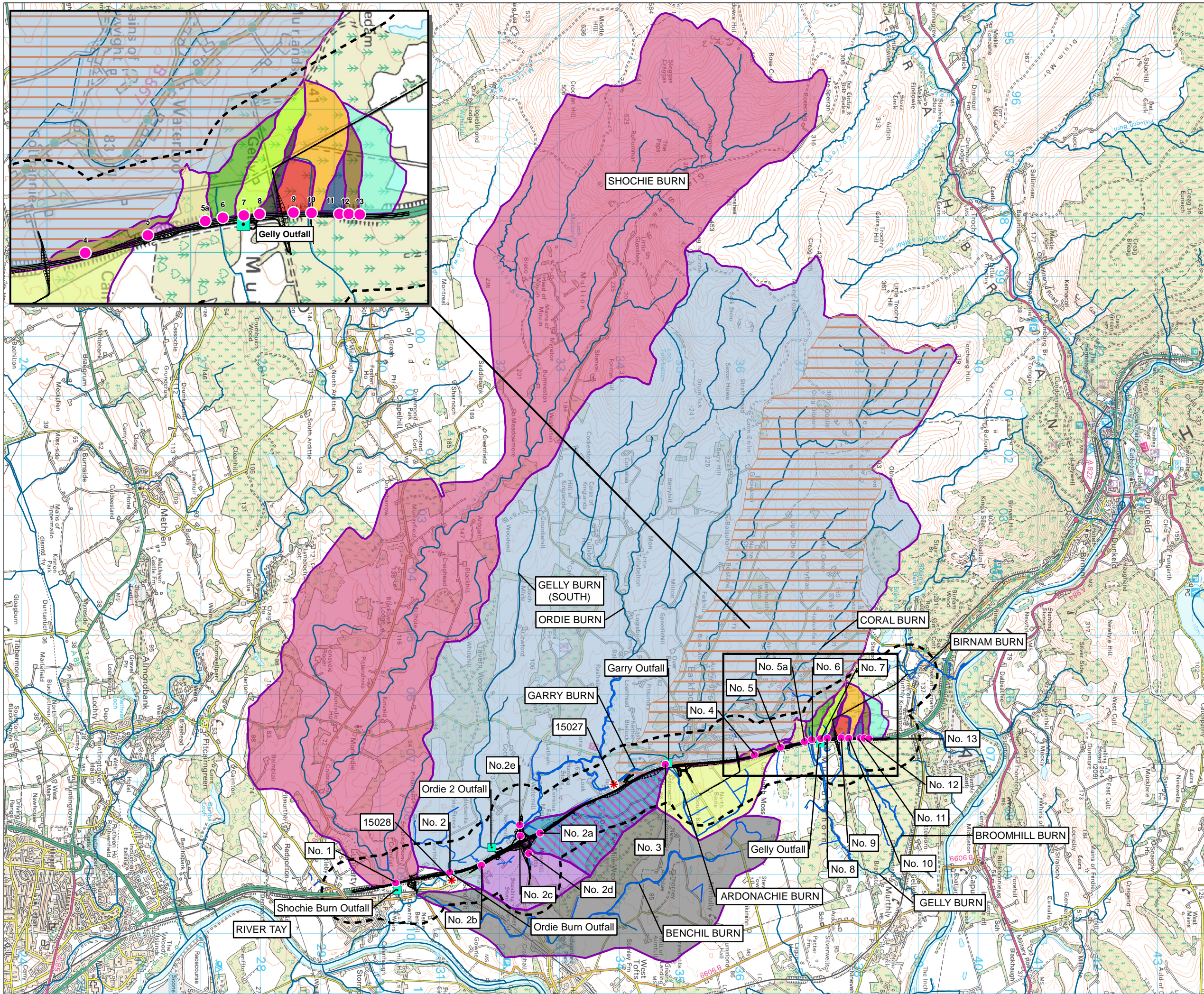


FIGURE 9.2



- Legend**
- Proposed Scheme (DMRB Stage 3 Design)
 - 500m Study Area
 - River Station
 - Watercourse Crossing Point
 - Outfall Points
 - Garry Outfall Drainage Area
 - River Network *
- Catchments**
- Benchil Burn
 - Crossing 01 (Shochie Burn)
 - Crossing 02 (Ordie Burn)
 - Crossing 02a (Unnamed Tributary of Ordie Burn)
 - Crossing 02b (Unnamed Tributary of Ordie Burn)
 - Crossing 02c (Unnamed Tributary of Ordie Burn)
 - Crossing 03 (Ardonachie Burn)
 - Crossing 04 (Unnamed Drain 3)
 - Crossing 05 (Unnamed Drain 4)
 - Crossing 05a (Unnamed)
 - Crossing 06 (Unnamed Tributary of Gelly Burn)
 - Crossing 07 (Gelly Burn (North))
 - Crossing 08 (Unnamed Drain 5)
 - Crossing 09 (Unnamed Tributary 3 of Gelly Burn (North))
 - Crossing 10 (Broomhill Burn)
 - Crossing 11 (Unnamed)
 - Crossing 12 (Unnamed)
 - Crossing 13 (Unnamed)

* Centre for Ecology and Hydrology (CEH) data

0	MAR 2014	ES Publication	KA	KS	SW	AG
Rev.	Date	Purpose of revision	Drawn	Check'd	Rev'd	Apprd



Client	TRANSPORT SCOTLAND The Scottish Government					
Project	A9 Dualling: Luncarty to Pass of Birnam					
Drawing Title	Surface Water Hydrology					
Drawing Status	FINAL					
Scale @ A3	1:60,000		DO NOT SCALE			
JACOBS No.	B1557602					
Drawing No.	FIGURE 9.2					Rev 0