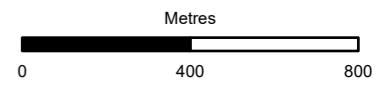


- Survey Area (250m)
- Proposed Scheme
- Mitigation Areas**
- Biodiversity Net Gain (BNG) and Natural Capital (NC) Enhancement Sites
- Ecological Mitigation Receptor Sites
- Habitat Suitability Assessment**
- Suitable
- Unsuitable
- Not Surveyed

Note: The BNG and NC sites are shown for context, baseline information relating to these areas is covered in Volume 4, Appendix 11.16 Enhancement Site Survey Report.



Subsidiary Authorised and Accepted – Stage 3	Status A3
---	--------------



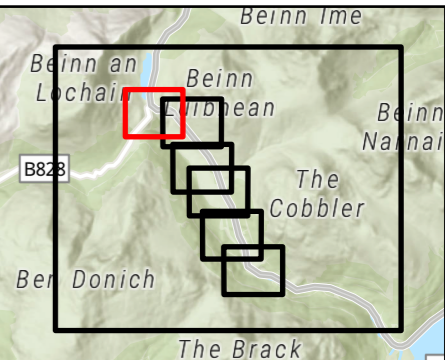
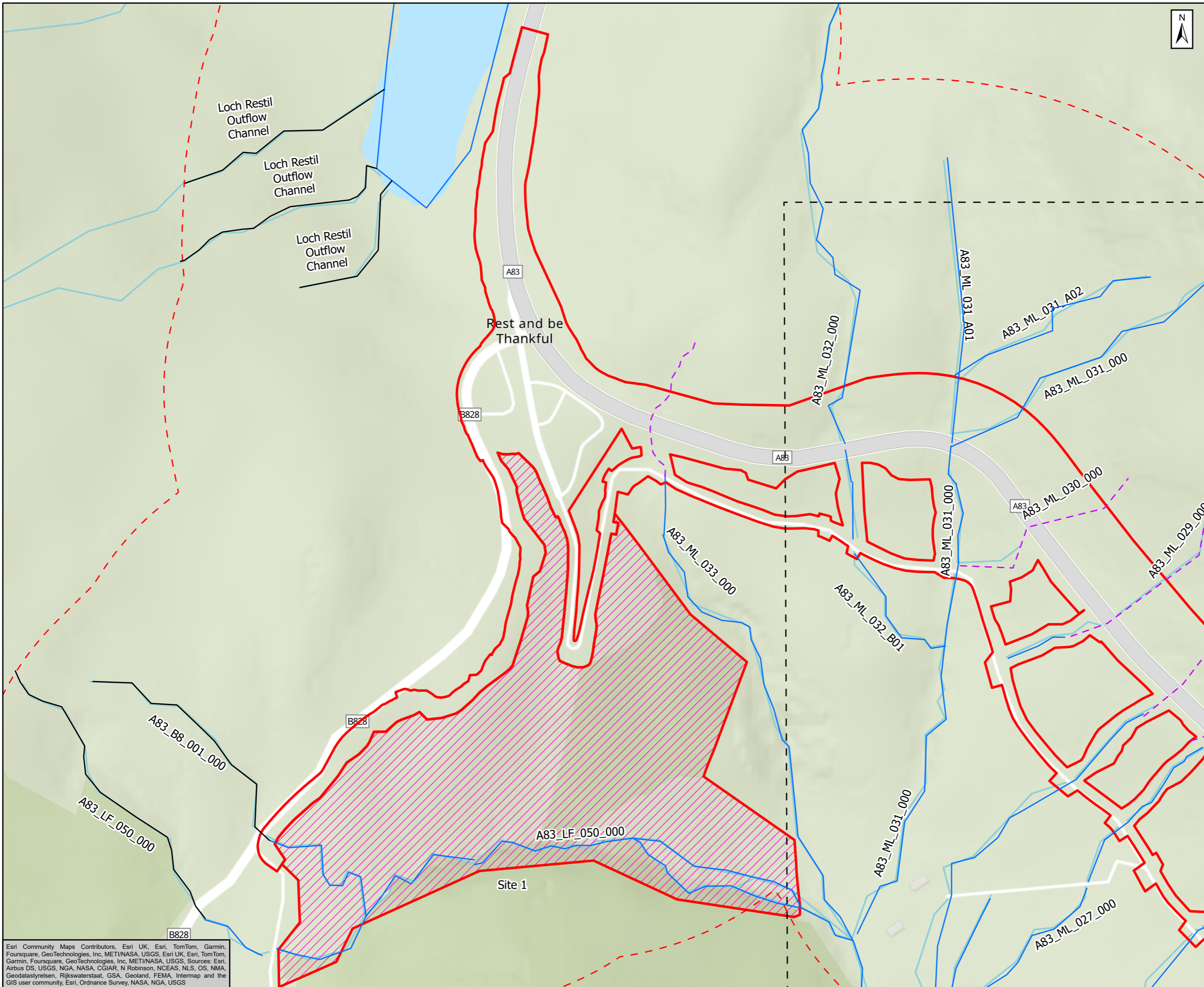
Client  
**A83 Rest and Be Thankful**



Title  
**Figure 11.8a  
Suitability of Watercourses  
for Otter  
Page 1 of 7**

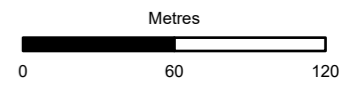
Scale 1:18,000	Drawn ET	Checked RT	Approved CW	Authorised MR
Document Number A83AAB-AWJ-EAC-LTS_GEN-DR-VT-000391				Revision C01
Location	Type	Role	Number	

Esri, Intermap, NASA, NGA, USGS, Esri Community Maps Contributors, Esri UK, Esri, TomTom, Garmin, Foursquare, GeoTechnologies, Inc, METI/NASA, USGS, Esri UK, Esri, TomTom, Garmin, Foursquare, GeoTechnologies, Inc, METI/NASA, USGS, Esri, Ordnance Survey, NASA, NGA, USGS



- Survey Area (250m)
- Proposed Scheme
- Mitigation Areas**
- Biodiversity Net Gain (BNG) and Natural Capital (NC) Enhancement Sites
- Habitat Suitability Assessment**
- Suitable
- - - Unsuitable
- Not Surveyed

Note: The BNG and NC sites are shown for context, baseline information relating to these areas is covered in Volume 4, Appendix 11.16 Enhancement Site Survey Report.



Subsidiary: Authorised and Accepted – Stage 3      Status: A3



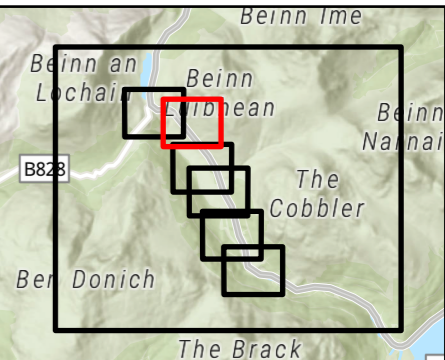
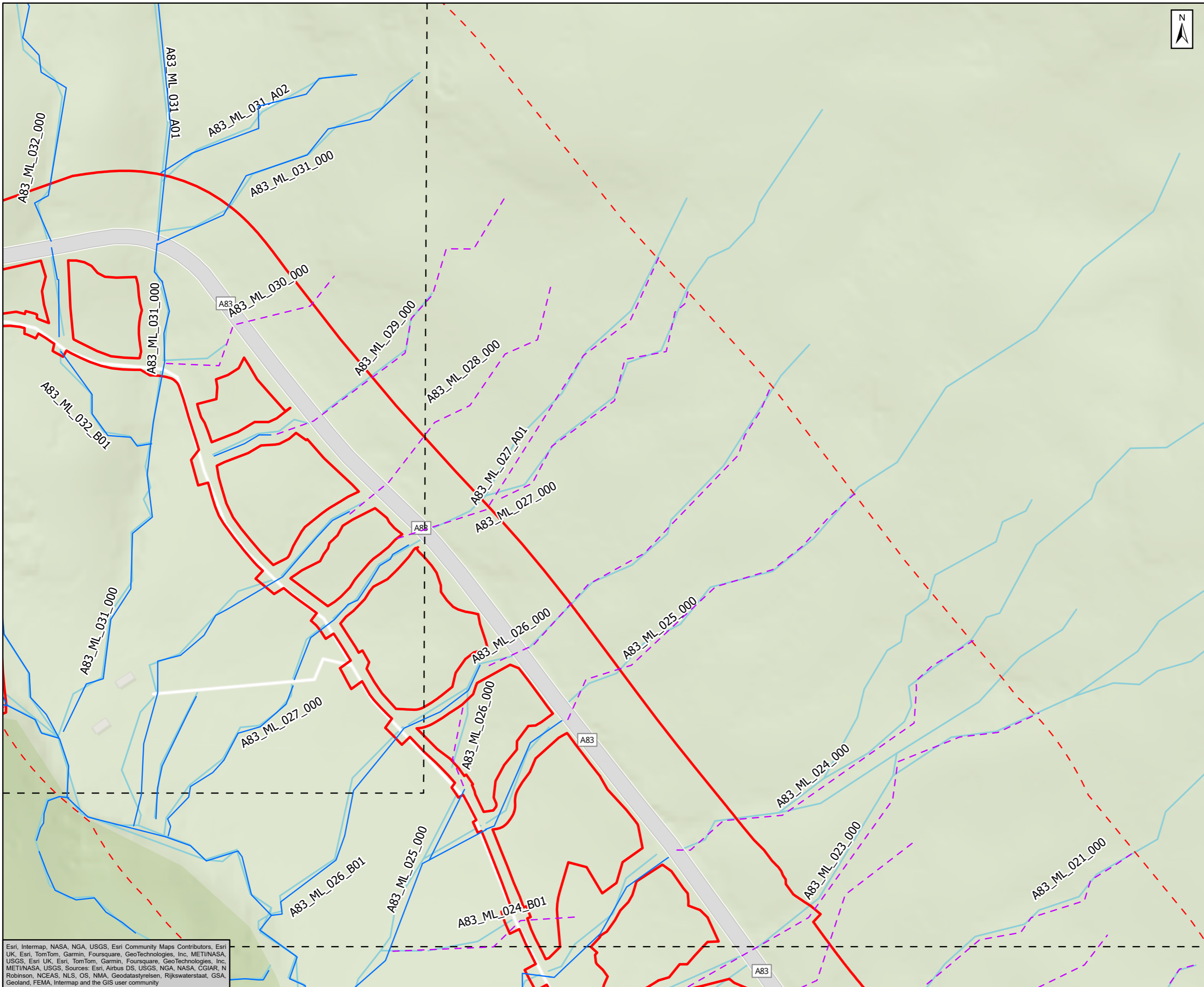
Project Title: A83 Rest and Be Thankful



Figure 11.8a  
Suitability of Watercourses  
for Otter  
Page 2 of 7

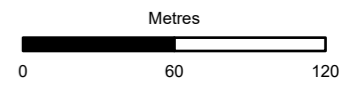
Scale: 1:3,000	Drawn: ET	Checked: RT	Approved: CW	Authorised: MR
Document Number: A83AAB-AWJ-EAC-LTS_GEN-DR-VT-000391				Revision: C01
Location:	Type:	Role:	Number:	

Esri Community Maps Contributors, Esri UK, Esri, TomTom, Garmin, Foursquare, GeoTechnologies, Inc, METI/NASA, USGS, Esri UK, Esri, TomTom, Garmin, Foursquare, GeoTechnologies, Inc, METI/NASA, USGS. Sources: Esri, Airbus DS, USGS, NGA, NASA, CGIAR, N Robinson, NCEAS, NLS, OS, NMA, Geodatastyrelsen, Rijkswaterstaat, GSA, Geoland, FEMA, Intermap and the GIS user community, Esri, Ordnance Survey, NASA, NGA, USGS



- - - Survey Area (250m)
- ▬ Proposed Scheme
- Mitigation Areas**
- ▨ Biodiversity Net Gain (BNG) and Natural Capital (NC) Enhancement Sites
- Habitat Suitability Assessment**
- ▬ Suitable
- - - Unsuitable

Note: The BNG and NC sites are shown for context, baseline information relating to these areas is covered in Volume 4, Appendix 11.16 Enhancement Site Survey Report.



Subsidiary Authorised and Accepted – Stage 3	Status A3
---	--------------



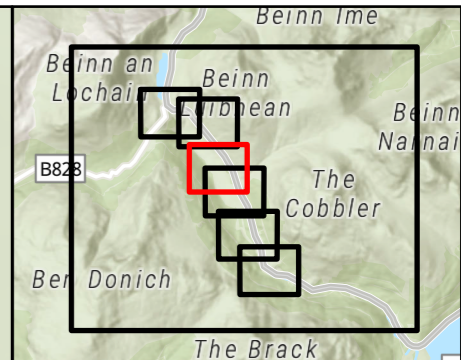
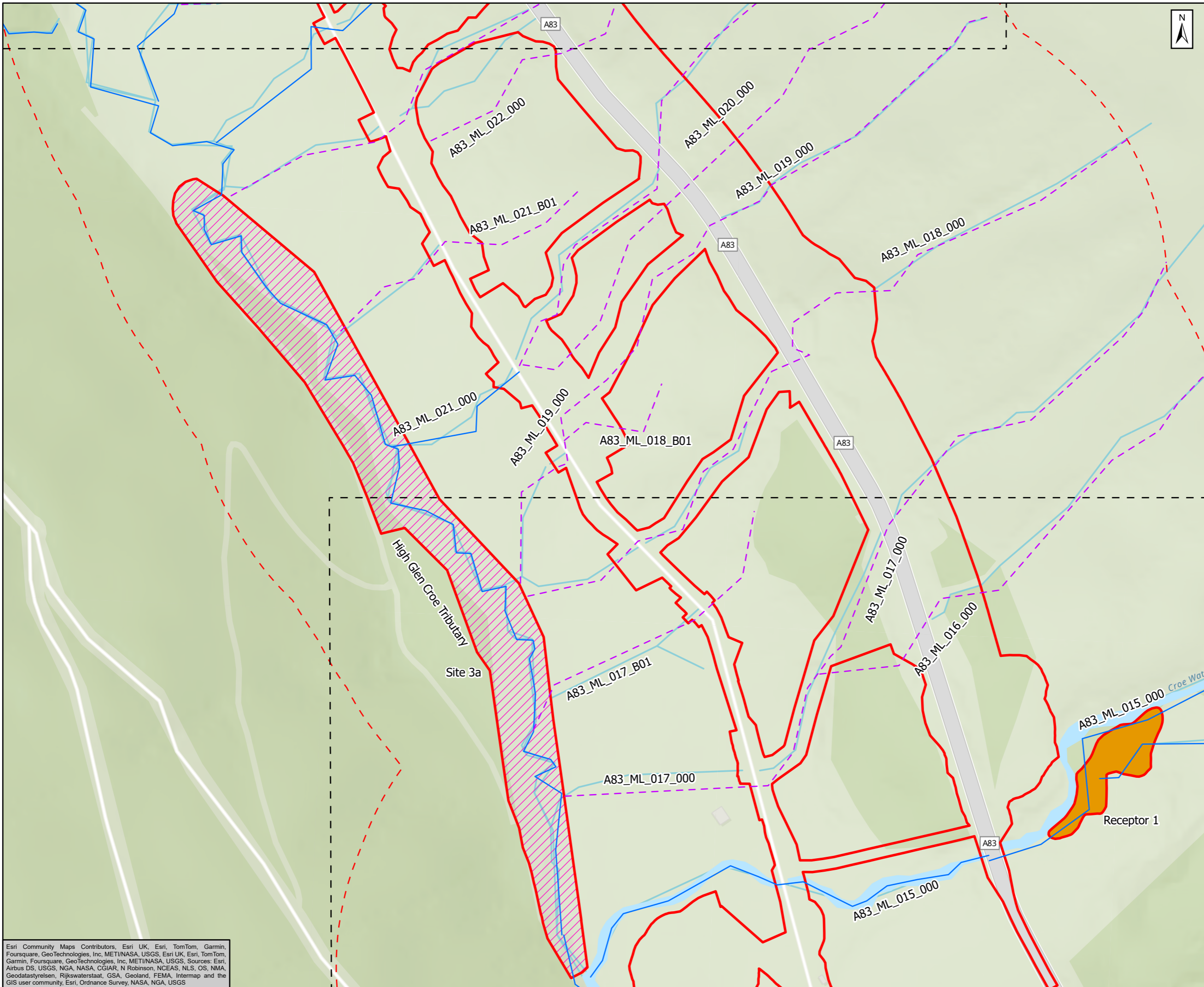
Project Title  
**A83 Rest and Be Thankful**



Title  
**Figure 11.8a  
Suitability of Watercourses  
for Otter  
Page 3 of 7**

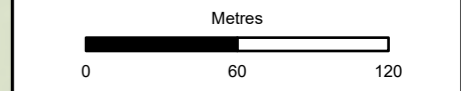
Scale 1:3,000	Drawn ET	Checked RT	Approved CW	Authorised MR
Document Number Project   Originator   Volume A83AAB-AWJ-EAC-LTS_GEN-DR-VT-000391				Revision C01
Location	Type	Role	Number	

Esri, Intermap, NASA, NGA, USGS, Esri Community Maps Contributors, Esri UK, Esri, TomTom, Garmin, Foursquare, GeoTechnologies, Inc, METI/NASA, USGS, Esri UK, Esri, TomTom, Garmin, Foursquare, GeoTechnologies, Inc, METI/NASA, USGS, Sources: Esri, Airbus DS, USGS, NGA, NASA, CGIAR, N Robinson, NCEAS, NLS, OS, NMA, Geodatastyrelsen, Rijkswaterstaat, GSA, Geoland, FEMA, Intermap and the GIS user community



- Survey Area (250m)
- Proposed Scheme
- Mitigation Areas**
- Biodiversity Net Gain (BNG) and Natural Capital (NC) Enhancement Sites
- Ecological Mitigation Receptor Sites
- Habitat Suitability Assessment**
- Suitable
- Unsuitable

Note: The BNG and NC sites are shown for context, baseline information relating to these areas is covered in Volume 4, Appendix 11.16 Enhancement Site Survey Report.



Subsidiary Authorised and Accepted – Stage 3	Status A3
---	--------------



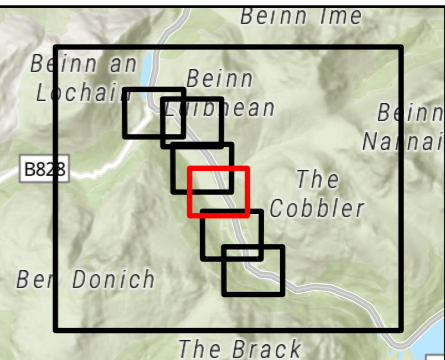
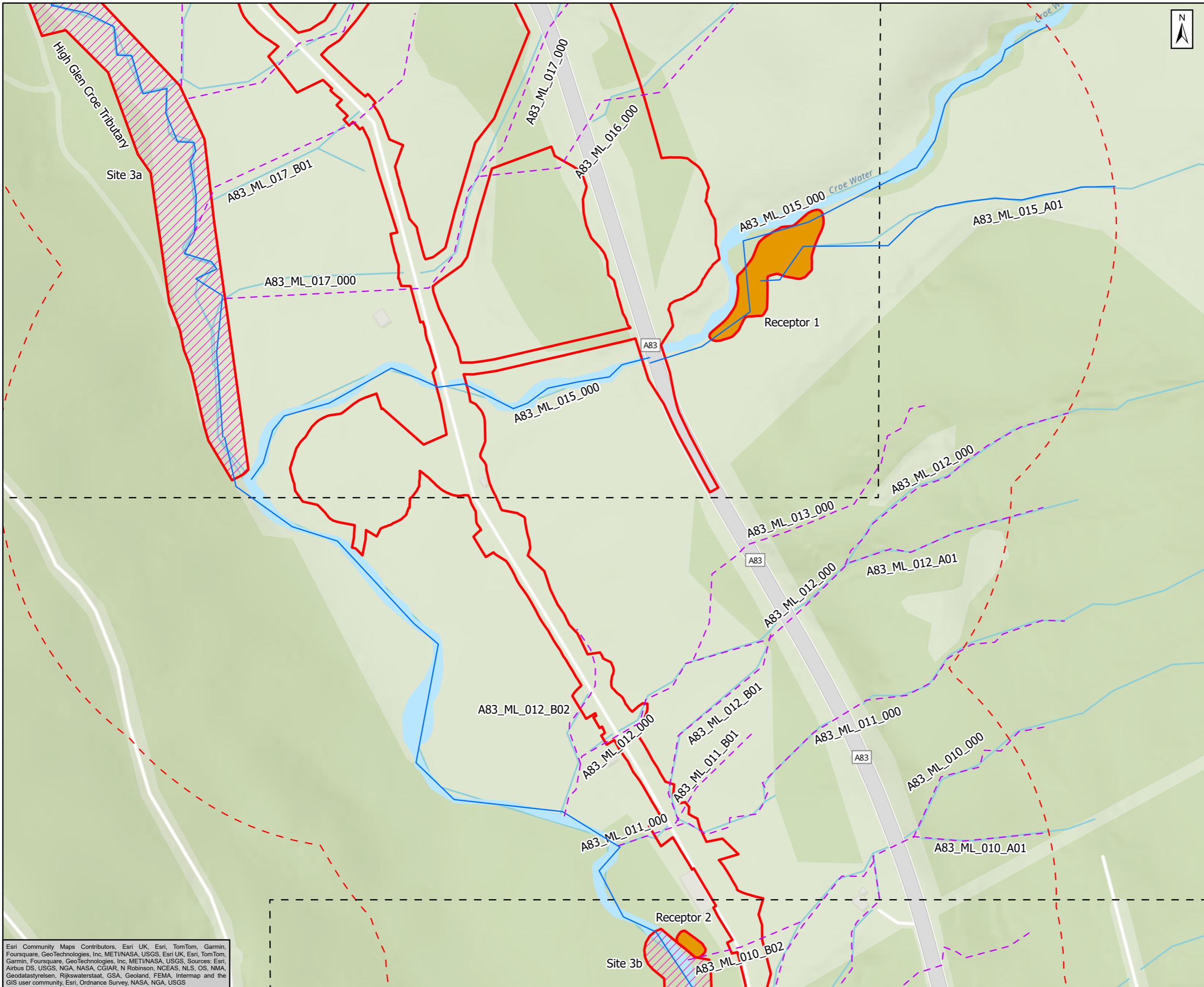
Project Title  
**A83 Rest and Be Thankful**



Title  
**Figure 11.8a  
Suitability of Watercourses  
for Otter  
Page 4 of 7**

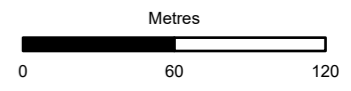
Scale 1:3,000	Drawn ET	Checked RT	Approved CW	Authorised MR
Document Number A83AAB-AWJ-EAC-LTS_GEN-DR-VT-000391				Revision C01
Location	Type	Role	Number	

Esri Community Maps Contributors, Esri UK, Esri, TomTom, Garmin, Foursquare, GeoTechnologies, Inc, METI/NASA, USGS, Esri UK, Esri, TomTom, Garmin, Foursquare, GeoTechnologies, Inc, METI/NASA, USGS, Sources: Esri, Airbus DS, USGS, NGA, NASA, CGIAR, N Robinson, NCEAS, NLS, OS, NMA, Geodatastyrelsen, Rijkswaterstaat, GSA, Geoland, FEMA, Intermap and the GIS user community, Esri, Ordnance Survey, NASA, NGA, USGS



- Survey Area (250m)
- Proposed Scheme
- Mitigation Areas**
- Biodiversity Net Gain (BNG) and Natural Capital (NC) Enhancement Sites
- Ecological Mitigation Receptor Sites
- Habitat Suitability Assessment**
- Suitable
- Unsuitable

Note: The BNG and NC sites are shown for context, baseline information relating to these areas is covered in Volume 4, Appendix 11.16 Enhancement Site Survey Report.



Subsidiary: Authorised and Accepted – Stage 3      Status: A3



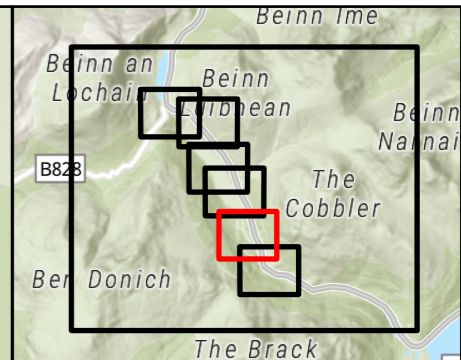
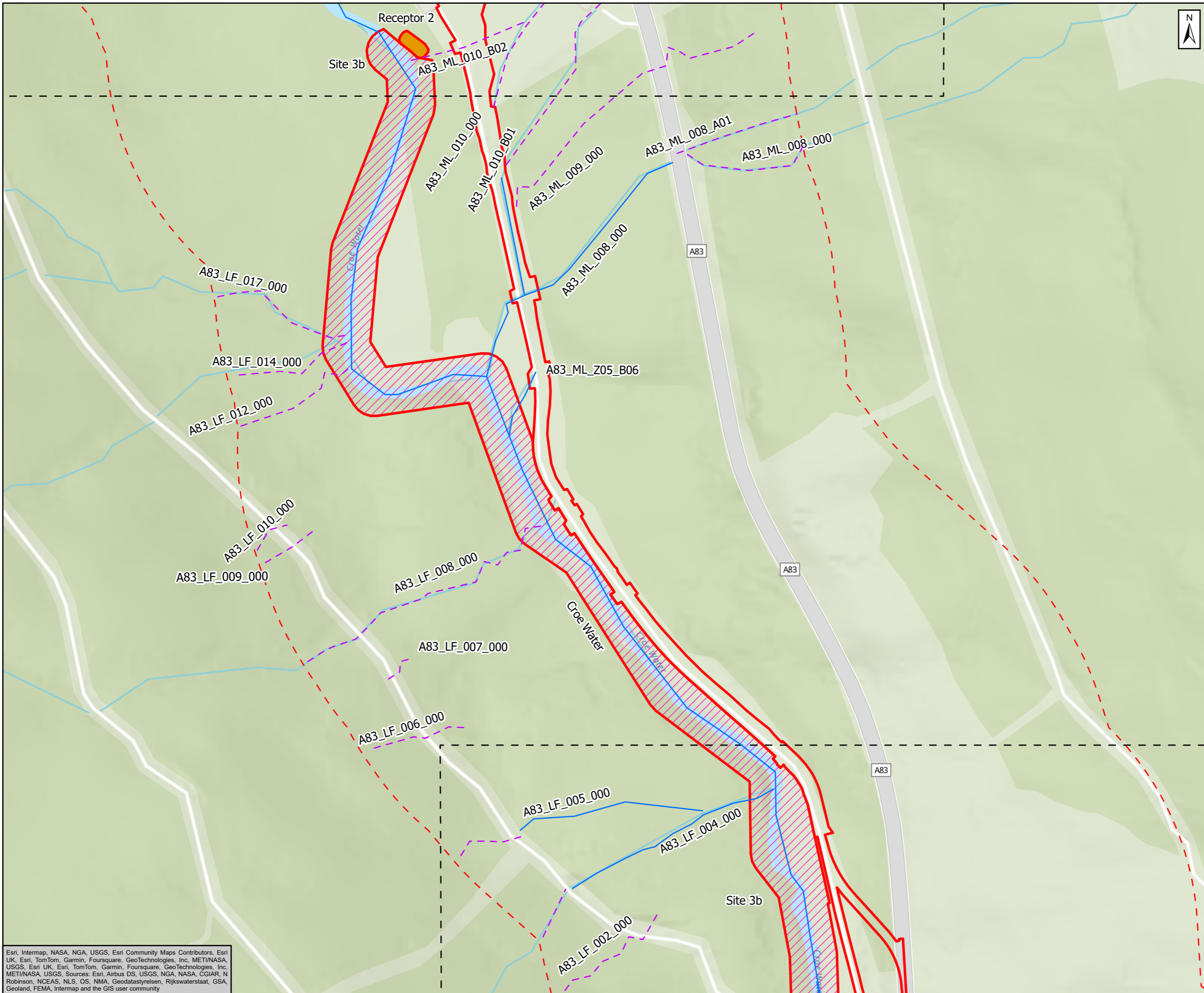
Project Title: A83 Rest and Be Thankful



Figure 11.8a  
Suitability of Watercourses  
for Otter  
Page 5 of 7

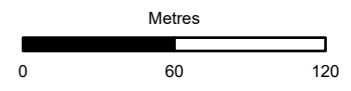
Scale: 1:3,000	Drawn: ET	Checked: RT	Approved: CW	Authorised: MR
Document Number: A83AAB-AWJ-EAC-LTS_GEN-DR-VT-000391	Project:	Originator:	Volume:	Revision: C01
Location:	Type:	Role:	Number:	

Esri Community Maps Contributors, Esri UK, Esri, TomTom, Garmin, Foursquare, GeoTechnologies, Inc, METI/NASA, USGS, Esri UK, Esri, TomTom, Garmin, Foursquare, GeoTechnologies, Inc, METI/NASA, USGS, Sources: Esri, Airbus DS, USGS, NGA, NASA, CGIAR, N Robinson, NCEAS, NLS, OS, NMA, Geodatastyrelsen, Rijkswaterstaat, GSA, Geoland, FEMA, Intermap and the GIS user community, Esri, Ordnance Survey, NASA, NGA, USGS



- Survey Area (250m)
- Proposed Scheme
- Mitigation Areas**
- Biodiversity Net Gain (BNG) and Natural Capital (NC) Enhancement Sites
- Ecological Mitigation Receptor Sites
- Habitat Suitability Assessment**
- Suitable
- Unsuitable

Note: The BNG and NC sites are shown for context, baseline information relating to these areas is covered in Volume 4, Appendix 11.16 Enhancement Site Survey Report.



Subsidiary: Authorised and Accepted – Stage 3      Status: A3



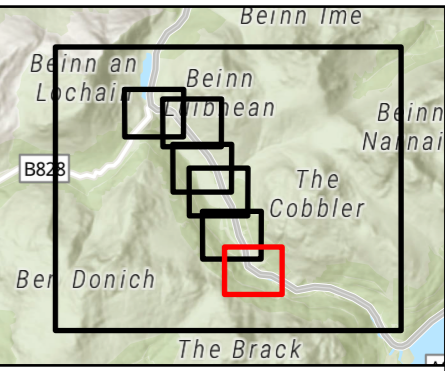
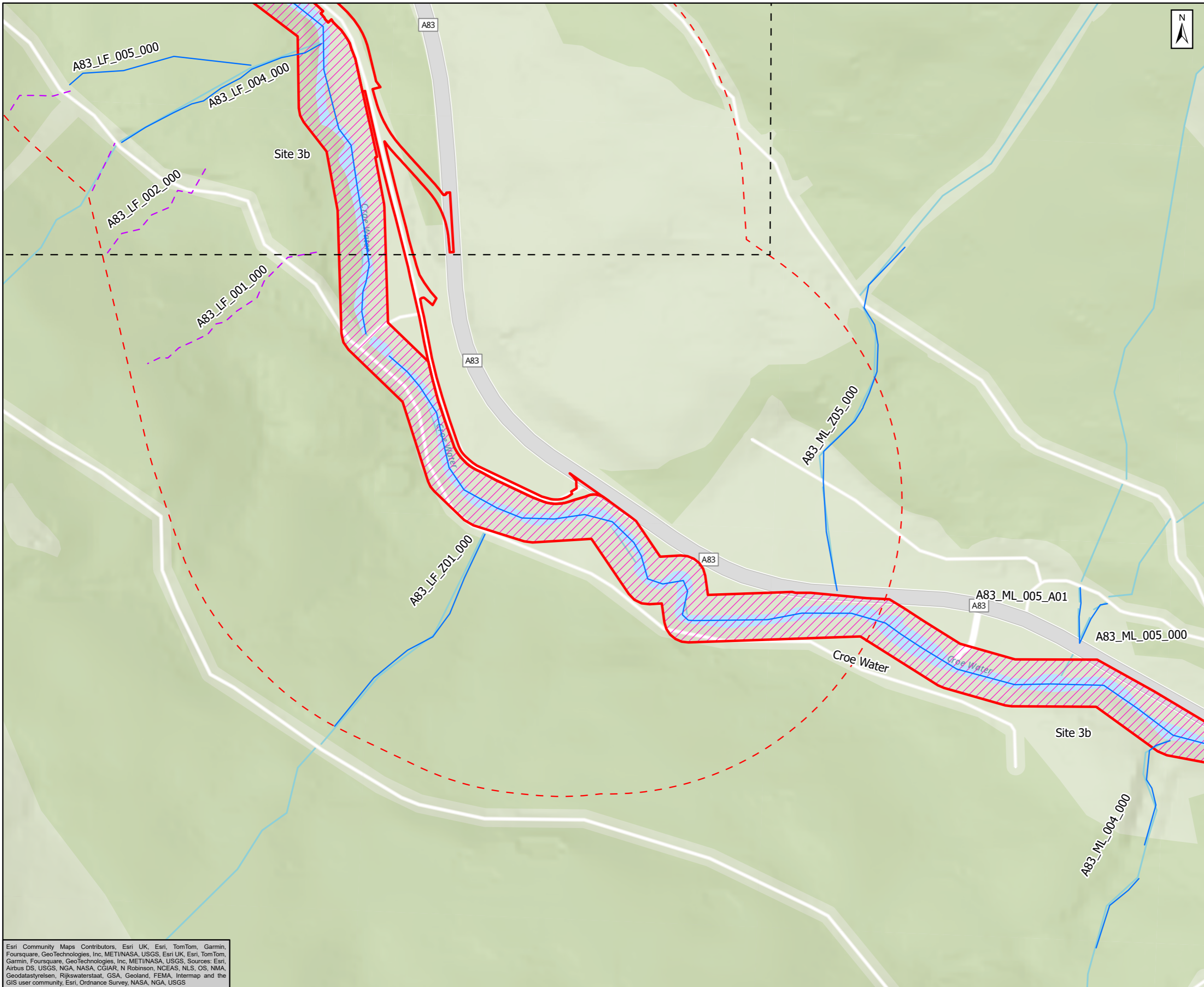
Project Title: A83 Rest and Be Thankful



Figure 11.8a  
Suitability of Watercourses  
for Otter  
Page 6 of 7

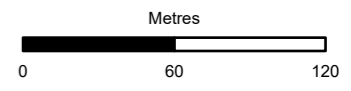
Scale: 1:3,000	Drawn: ET	Checked: RT	Approved: CW	Authorised: MR
Document Number: A83AAB-AWJ-EAC-LTS_GEN-DR-VT-000391	Project: [blank]	Originator: [blank]	Volume: [blank]	Revision: C01
Location: [blank]	Type: [blank]	Role: [blank]	Number: [blank]	[blank]

Esri, Intermap, NASA, NGA, USGS, Esri Community Maps Contributors, Esri UK, Esri, TomTom, Garmin, Foursquare, GeoTechnologies, Inc, METI/NASA, USGS, Esri UK, Esri, TomTom, Garmin, Foursquare, GeoTechnologies, Inc, METI/NASA, USGS, Sources: Esri, Airbus DS, USGS, NGA, NASA, CGIAR, N Robinson, NCEAS, NLS, OS, NMA, Geodatastyrelsen, Rijkswaterstaat, GSA, Geoland, FEMA, Intermap and the GIS user community



- Survey Area (250m)
- Proposed Scheme
- Mitigation Areas**
- Biodiversity Net Gain (BNG) and Natural Capital (NC) Enhancement Sites
- Habitat Suitability Assessment**
- Suitable
- - - Unsuitable

Note: The BNG and NC sites are shown for context, baseline information relating to these areas is covered in Volume 4, Appendix 11.16 Enhancement Site Survey Report.



Subsidiary Authorised and Accepted – Stage 3	Status A3
---	--------------



Client  
**A83 Rest and Be Thankful**



Title  
**Figure 11.8a  
Suitability of Watercourses  
for Otter  
Page 7 of 7**

Scale 1:3,000	Drawn ET	Checked RT	Approved CW	Authorised MR
Document Number Project   Originator   Volume A83AAB-AWJ-EAC-LTS_GEN-DR-VT-000391				Revision C01
Location	Type	Role	Number	

Esri Community Maps Contributors, Esri UK, Esri, TomTom, Garmin, Foursquare, GeoTechnologies, Inc, METI/NASA, USGS, Esri UK, Esri, TomTom, Garmin, Foursquare, GeoTechnologies, Inc, METI/NASA, USGS. Sources: Esri, Airbus DS, USGS, NGA, NASA, CGIAR, N Robinson, NCEAS, NLS, OS, MMA, Geodatastyrelsen, Rijkswaterstaat, GSA, Geoland, FEMA, Intermap and the GIS user community, Esri, Ordnance Survey, NASA, NGA, USGS