

Not to Scale

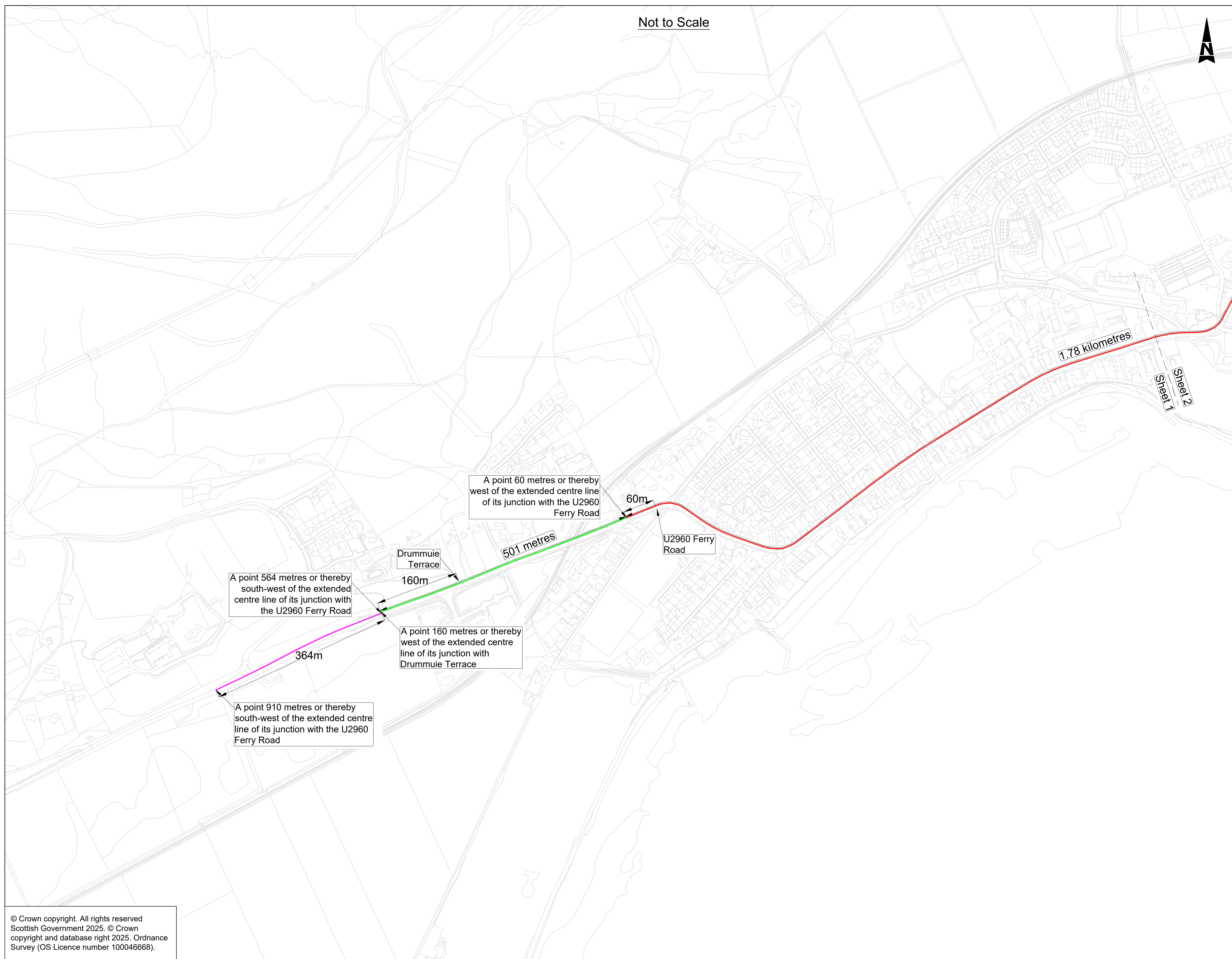


Key:
The M9/A9 Trunk Road (Golspie) (20mph, 30mph and 40mph Speed Limits) Order 202[]:

Part 1 (20mph): —
1. That length of the M9/A9 Edinburgh - Stirling - Thurso Trunk Road at Golspie from a point 160 metres or thereby north-east of the extended centre line of its junction with the U3116 Sibell Road to a point 60 metres or thereby west of the extended centre line of its junction with the U2960 Ferry Road, a distance of 1.78 kilometres or thereby.

Part 2 (30mph): —
2. That length of the M9/A9 Edinburgh - Stirling - Thurso Trunk Road at Golspie from a point 60 metres or thereby west of the extended centre line of its junction with the U2960 Ferry Road in a generally south-westerly direction to a point 160 metres or thereby west of the extended centreline of its junction with Drummie Terrace, a distance of 501 metres or thereby.

Part 3 (40mph): —
3. That length of the M9/A9 Edinburgh-Stirling-Thurso Trunk Road at Golspie from a point 564 metres or thereby south-west of the extended centre line of its junction with the U2960 Ferry Road in a generally south-westerly direction to a point 910 metres or thereby south-west of the extended centre line of its junction with the U2960 Ferry Road, a distance of 346 metres or thereby.
4. That length of the M9/A9 Edinburgh-Stirling-Thurso Trunk Road at Golspie from a point 160 metres or thereby north-east of the extended centre line of its junction with the U3116 Sibell Road in a generally north-easterly direction to a point 1.505 kilometres north-east of the extended centre line of its junction with the U3116 Sibell Road, a distance of 1.345 kilometres or thereby.



© Crown copyright. All rights reserved
Scottish Government 2025. © Crown
copyright and database right 2025. Ordnance
Survey (OS Licence number 100046668).