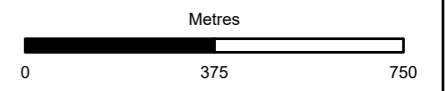


- ▬ Proposed Scheme Boundary (excl. Natural Capital & Biodiversity Net Gain)
- Proposed Scheme Boundary 100m Buffer
- Heath Communities**
- H14/M10 Mosaic
- Mire Communities**
- M10
- MTS Cuttings Radii of Influence



Subsidiary Authorised and Accepted – Stage 3	Status A3
---	--------------

Client

TRANSPORT SCOTLAND
CÒMHDHAIL ALBA

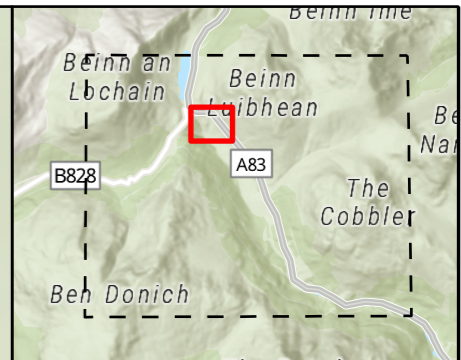
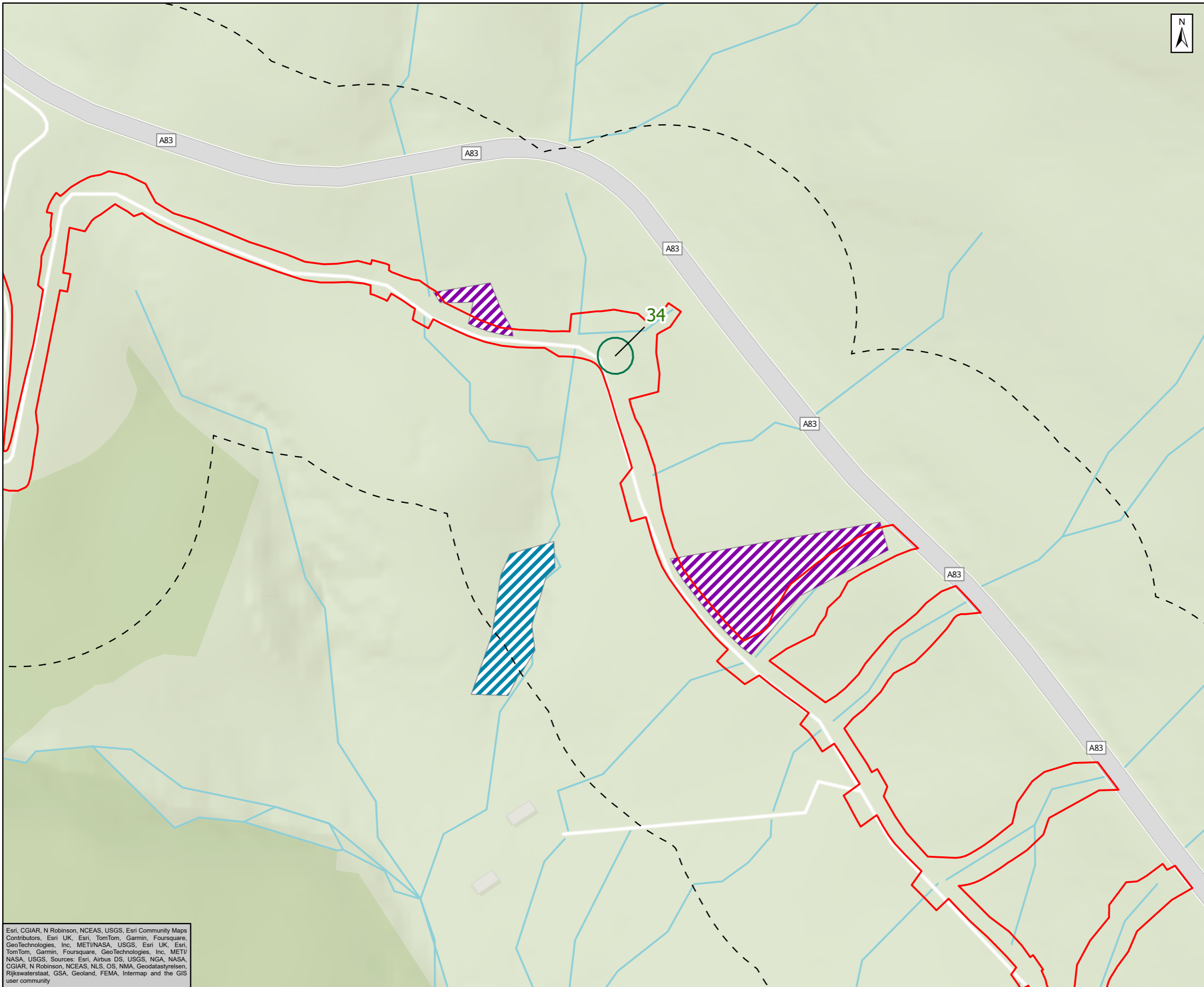
Project Title
A83 Rest and Be Thankful

AtkinsRéalis WSP

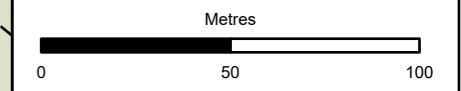
Title
Figure 8.2 - Groundwater Dependent Terrestrial Ecosystems
Page 1 of 2

Scale 1:15,000	Drawn ET	Checked SB	Approved MR	Authorised RG
Document Number Project	Originator	Volume	Revision	
A83AAB-AWJ-EAC-MTS_GEN-DR-VT-000019			C01	
Location	Type	Role	Number	

Esri, Intermap, NASA, NGA, USGS, Esri Community Maps Contributors, Esri UK, Esri, TomTom, Garmin, Foursquare, GeoTechnologies, Inc, METI/NASA, USGS, Esri UK, Esri, TomTom, Garmin, Foursquare, GeoTechnologies, Inc, METI/NASA, USGS



- Proposed Scheme Boundary (excl. Natural Capital & Biodiversity Net Gain)
- Proposed Scheme Boundary 100m Buffer
- Heath Communities**
- H14/M10 Mosaic
- Mire Communities**
- M10
- MTS Cuttings Radii of Influence



Subsidiary: Authorised and Accepted – Stage 3 Status: A3



Project Title: A83 Rest and Be Thankful



Figure 8.2 - Groundwater Dependent Terrestrial Ecosystems
Page 2 of 2

Scale: 1:2,000	Drawn: ET	Checked: SB	Approved: MR	Authorised: RG
Document Number: A83AAB-AWJ-EAC-MTS_GEN-DR-VT-000019	Project:	Originator:	Volume:	Revision: C01
Location:	Type:	Role:	Number:	

Esri, CGIAR, N Robinson, NCEAS, USGS, Esri Community Maps Contributors, Esri UK, Esri, TomTom, Garmin, Foursquare, GeoTechnologies, Inc, METI/NASA, USGS, Esri UK, Esri, TomTom, Garmin, Foursquare, GeoTechnologies, Inc, METI/NASA, USGS, Sources: Esri, Airbus DS, USGS, NGA, NASA, CGIAR, N Robinson, NCEAS, NLS, OS, NMA, Geodastyleisen, Rijkswaterstaat, GSA, Geoland, FEMA, Intermap and the GIS user community