

A9 Short Term Measures Progress Report - Autumn 2024

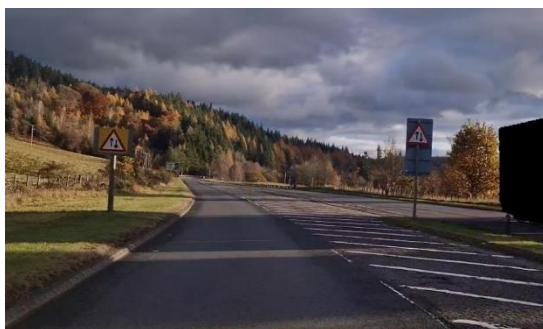
Introduction

In December 2022 the Scottish Government announced a £5M package of additional engineering measures to be applied to the A9 from Perth to Inverness between 2023 and 2025 and which are intended to address the perceived contributory factors to collisions in 2022.

These measures include:

- New centre and edge lines marked using high specification “Weatherline Plus” material that has enhanced reflectivity and acoustic properties (i.e. textured lines, which aim to act as a noise warning for drifting vehicles). Changes to existing markings to provide double white lines (prohibiting overtaking) will be progressed around junctions where feasible and supported by Police Scotland.
- Illuminated road studs to provide greater clarity of junction layout at night, along with new/refreshed red infill surface in hatched areas (where required) to give greater emphasis, at junctions not currently treated.
- Upgrade to the transition from dual to single carriageway with enhanced signs indicating the end of dual carriageway, red infill in hatched areas to give greater emphasis and illuminated road studs at the transition between the two types of carriageway, along with use of “Weatherline Plus” at carriageway centre and edge lines.
- Road signs and road markings reaffirming ‘drive on the left’ at one mile intervals, translating to ‘one minutes’ travel time at 60mph.
- Deployment of variable message signs (VMS) displaying road safety messages at eight strategic locations during holiday season.

Approach to single carriageway



Before



After

Approach to dual carriageway



Before



After

Junction marking improvements



Before



After

Single carriageway lane delineation



Solar studs at junction



Red surface infill at dual/single carriageway transition



Short term measure update

The following table gives details of the progress made so far on each element with completion dates shown for each section. The overall programme of works is scheduled to be completed in March 2025.

		Complete	In Progress	Programmed
Single carriageway marking enhancements	8 sections	Bankfoot to Dalguise (May 23) Dalguise to Ballinluig (Oct 23) Pitlochry S to Faskally (Dec 23) Killiecrankie to Drumochter (Jun 24) Dalraddy to Slochd (Oct 22) Drumochter (N) to Crubenmore (Jul 24)	Kincraig to Aviemore Crubenmore (DC) to Kincraig	NA
Junction enhancements	15 junctions	A924 Pitlochry N (Feb 24) B8029 S Blair Atholl (Feb 24)) B8029 House of Bruar (Feb 24) B847 Calvine (May 24) A889 Dalwhinnie (May 24) B9150 Ralia (Feb 24) Clunie/Clunimore (Dec 23) Foss Road (April 24) Crubenmore (Aug 24) Glentruim (Aug 24) Trinafour (Jun 24)	A938 Carrbridge B9152 Aviemore S (Lynwilg) A95 Aviemore N (Granish)	A86 Kingussie S & N
Dual to Single marking enhancements	12 interfaces	Bankfoot-Dunkeld (May 23) Killiecrankie S (Jan 24) Killiecrankie N (Jan 24) Drumochter N (May 24) Crubenmore S (Aug 24) Crubenmore N (Glen Trium) (Aug 24) Slochd (Aug 24)	Kincraig	Ballinluig S Pitlochry S Drumochter S Dalraddy

Transport Scotland

Dual to Single carriageway interface traffic signs	12 interfaces	Bankfoot-Dunkeld (May 23)	Drumochter S Drumochter N Killiecrankie S Killiecrankie N	Crubenmore N (Glen Truim) Pitlochry S Ballinluig S Crubenmore S Kinraig Dalraddy Slochd
Two-way offset arrow markings	7 sections	Bankfoot to Dalguise (May 23) Dalguise to Ballinluig (Oct 23) Pitlochry S to Faskally (Dec 23) Killiecrankie to Drumochter (Jun 24) Drumochter (N) to Crubenmore (Jul 24)	Cru Benmore DC to Kinraig	Dalraddy to Slochd
Two-way warning signs	7 sections	Bankfoot to Dalguise (May 23) Dalguise to Ballinluig (Sep 24) Crubenmore DC to Kinraig (Aug 24)	Pitlochry S to Faskally Killiecrankie to Drumochter Drumochter (N) to Crubenmore	Dalraddy to Slochd